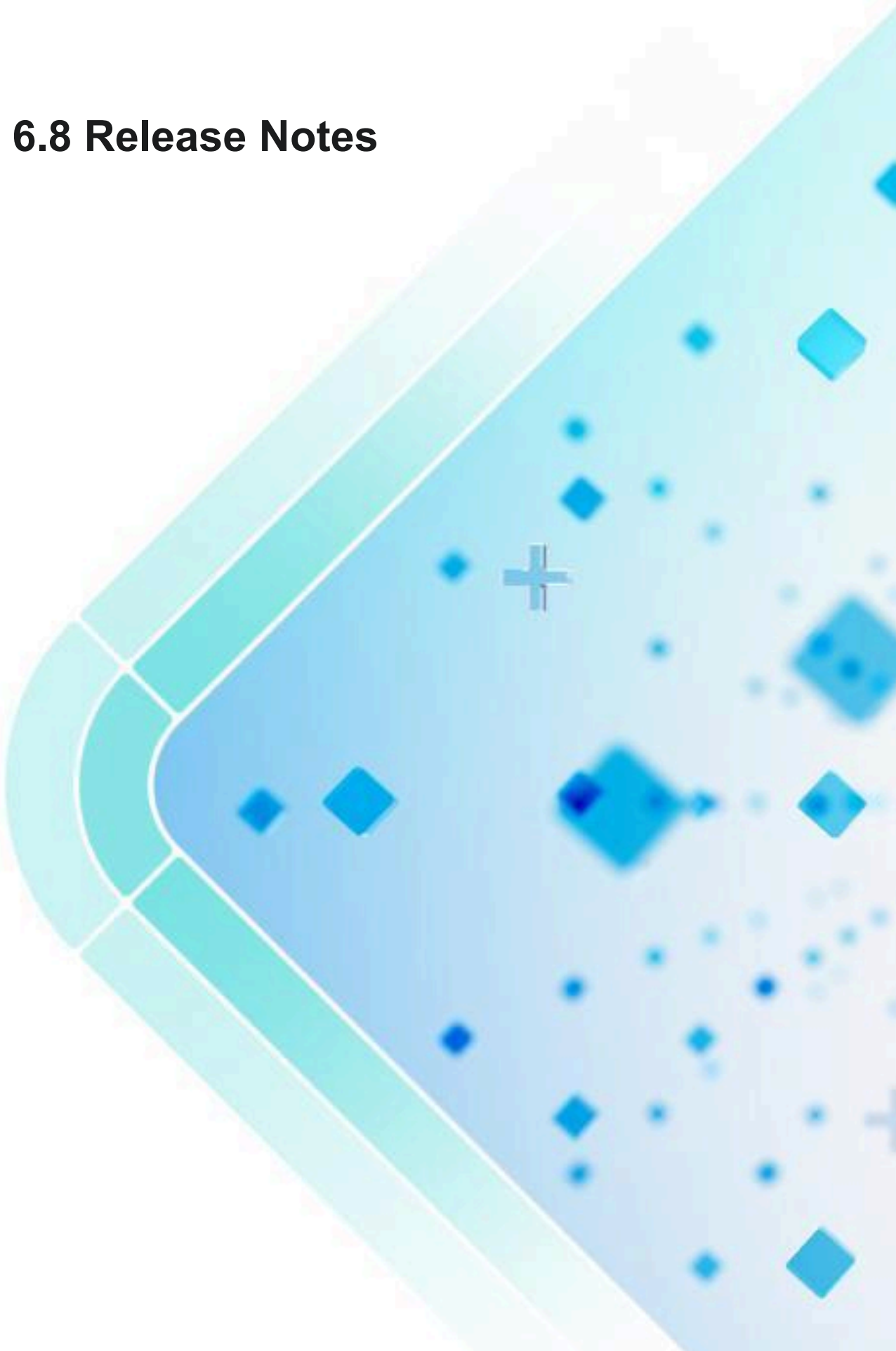


HCL MyXalytics

HCLSoftware

Version 6.8 Release Notes



HCL MyXalytics

The data contained in this document shall not be duplicated, used, or disclosed in whole or in part for any purpose. If a contract is awarded to chosen parties because of or in connection with the submission of this data, the client or prospective client shall have the right to duplicate, use, or disclose this data to the extent provided in the contract. This restriction does not limit the client's or prospective client's right to use the information contained in the data if it is obtained from another source without restriction. The data subject to this restriction is contained in all marked sheets.

HCL has more than 200 offices worldwide. Addresses, phone numbers, and fax numbers are listed on the HCL website at www.hcltechsw.com.

Copyright © 2026 HCLSoftware.



HCL MyXalytics

Release Details

Product/Service Name	HCL MyXalytics
Version Number	6.8
Release Date	9th April 2026

Table of Contents

1. Executive Summary	4
2. HCL MyXalytics Version 6.8	4
3. Features and Enhancements	4
3.1. Features	4
3.2. Enhancements	8
4. HCL MyXalytics Deployment Architecture	9
5. HCL MyXalytics Reference Architecture	10
6. Secure Release Checklist and Reports	10
6.1. Release Checklist	10
6.2. Packages included in HCL MyXalytics	11
6.3. AppScan Security Reports	27
6.3.1. SAST Report - Web Apps	27
6.3.2. SAST Report - Web API	27
6.3.3. SAST Report - Integration module	28
6.3.4. SAST Report - AI/ML Toolkit	28
6.3.5. SAST Report -Gen-AI Component	28
6.3.6. DAST Report	29
6.4. Security Penetration Testing Reports	31
7. Checklists	33
7.1. Data Security Checklist	33
7.2. Authentication and Access Control Checklist	34
7.3. Application Security Checklist	34
7.4. Non-Functional Testing Coverage Details	35
7.4.1. Load Testing	35
7.4.2. Upgradability testing	38
8. Existing Issues	39
9. Looking Forward	39

HCL MyXalytics

1. Executive Summary

HCL MyXalytics is a Unified Reporting and Dashboarding solution which helps organizations by providing an unparalleled visibility into performance of IT systems and processes. It helps to provide people and organizations with the clarity they need to drive continuous operational improvements.

HCL MyXalytics offers intuitive visualizations of data from multiple sources on a unified & role based/custom dashboard. Its capabilities include robust reporting of ITSM metrics, governance and control, root cause analysis for all incidents, automated risk management approval workflow and real-time tracking of risks and remediation plans, infused AI-driven predictive analytics to proactively flag potential breaches and crisis automated business reporting, zero-touch automation, reduced SLA violations & improved IT environment predictability.

2. HCL MyXalytics Version 6.8

HCL MyXalytics 6.8 delivers advanced FinOps and cloud cost management capabilities, new AIForce personas, and an expanded integration ecosystem. This release introduces Workload Cost Estimation for multi-cloud cost simulation, AI Service Visibility with consumption insights and cost-saving opportunities, OCI Custom Cost Recommendations, and AI Model Cost Optimization for Azure. The release also delivers automated and semi-automated Cost Recommendation Remediation strategies via BigFix CLM and ServiceNow, Business-Owner Approval Controls for cost optimization, a Cloud Compliance Engine for custom compliance rule definitions, and Azure Customer Pricing Support based on EAMCA negotiated rates.

Tag Apply and Sync capabilities manage tag policy lifecycles across Azure, AWS, and OCI. New visualization types — Service Map Hierarchy, Semi-Doughnut, Progress Gauge, Change Calendar enhancements, and new Tile template styles — along with Multi-Source Reporting improvements and integrations with Dell Apex AIOps, Systrack, AEX, DataDog, and IEM, further enrich the platform. Two new AIForce personas — DWP (Digital Workplace) and Hybrid Cloud — are introduced under the AIFORCE.OPS module, while technical enhancements including Conditional Formatting for Badges/Icons, Cache Service Optimization, and Certificate Expiry Tracking strengthen operational intelligence across the platform.

3. Features and Enhancements

This release includes the following list of features and enhancements.

3.1. Features

Workload Cost Estimation

Introduced a new Workload Cost Estimation module that allows users to create cost estimates for upcoming workloads and simulate future costs across multiple cloud providers. Users can configure workload parameters such as compute, storage, and network requirements to generate side-by-side cost comparisons across Azure, AWS.

HCL MyXalytics

AI Service Visibility

Introduced AI Service Visibility to provide organizations with granular insights into AI service consumption patterns across Azure OpenAI, AWS Bedrock, and OCI AI Services. The feature identifies cost-saving opportunities by surfacing idle capacity, recommending tier adjustments, and tracking AI model spend trends over time.

OCI Custom Cost Recommendations

Expanded the FinOps Recommendation Engine with OCI-specific cost optimization capabilities. Custom recommendations for Oracle Cloud Infrastructure resources now cover right-sizing, idle resource identification, and compute shape optimization, generated using actual utilization data collected via Oracle Cloud Advisor APIs.

AI Model Cost Optimization (Azure)

Introduced dedicated cost optimization for Azure AI model deployments. The module tracks deployment tier usage to recommend tier evergreening(rightsizing) and reservation purchase recommendations.

Cost Recommendation Remediation Strategies

Introduced automated and semi-automated remediation strategies for cost optimization recommendations. Fully automated remediation actions are executed directly by MyXalytics. Semi-automated workflows integrate with BigFix CLM and ServiceNow, creating work orders and tickets that are tracked through to completion with savings attribution.

Business-Owner Remediation Controls

Introduced business-owner controls for cost optimization recommendations, enabling stakeholders to Approve, Reject, or Snooze recommendations. Approved actions are routed automatically to the configured execution channel. Snoozed actions are re-queued after the defined snooze period, and rejected actions are logged for full audit traceability.

Cloud Compliance Engine

MyXalytics will introduce a Cloud Compliance Engine that enables organizations to define and enforce custom compliance rules across data governance, security, cost, tagging, and operational domains. The engine will support flexible artifact definition, rule categorization, and multi-cloud evaluation across Azure, AWS, and OCI environments. Powered by ClickHouse as the backend datastore, it will deliver high-performance analytics and enable storage of historical compliance insights for trend analysis and reporting.

Azure Customer Pricing Support

Enhanced the FinOps Recommendation Engine to incorporate negotiated Azure customer pricing from Enterprise Agreement (EA) and Microsoft Customer Agreement (MCA) contracts. Recommendations

HCL MyXalytics

are now generated using customer-specific rates via the Azure Price Sheet API, providing more accurate and actionable savings projections than standard pay-as-you-go pricing.

Tag Apply and Sync (Azure, AWS, OCI)

Introduced Tag Apply and Sync capabilities to support the full lifecycle of tag policies across Azure, AWS, and OCI. Users can define tag policies, apply tags to cloud resources, and synchronize tag updates to cloud providers. Tag compliance monitoring tracks adherence to mandatory tagging standards with drill-down visibility to non-compliant resources.

New Visualizations

Below visualizations are introduced to let users visualize reports in a more intuitive manner.

Service Map Hierarchy: A new hierarchical visualization that renders the dependency map between services, applications, and infrastructure components. Enables drill-down navigation from a business service to the underlying CI layer, making it ideal for observability and impact analysis.

Semi-Doughnut Chart: A new chart type that renders metric performance as a half-doughnut gauge, ideal for displaying single KPI scores, SLA percentages, and compliance ratios. Supports configurable Red/Amber/Green color thresholds and an inner label.

Progress Gauge: A linear or circular progress gauge visualization for tracking goal completion, budget consumption, and milestone progress. Target value, current value, color band thresholds, and label formatting are fully configurable.

Change Calendar Enhancements: The Change Calendar visualization has been enhanced with multi-source change event overlay (ServiceNow, Jira, Azure DevOps), a risk heatmap overlay highlighting high-risk change windows, a conflict detection indicator for overlapping change windows, and improved mobile-responsive rendering.

New Tile Template Styles: Five new tile template styles have been introduced for summary KPI displays — Scorecard Tile (multi-metric with trend indicators), Comparison Tile (current vs. previous period), Alert Badge Tile (embedded severity badge), Sparkline Tile (compact inline trend), and RAG Status Tile (Red/Amber/Green with icon overlay).

Geo Health Grid: Previously, Geo Health had a drillthrough functionality that allowed users to either view Grid Level and raw data or drill through by country. Now, this can be achieved using grid columns. By clicking on the country or state column, users can drill through to the map or access the Grid Level and raw data, depending on what is enabled.

Multi-Source Reporting

Enhanced multi-source reporting to support merged datasets spanning up to 10 data sources in a single report, up from the previous limit of 5. An optimized caching layer reduces render time for

HCL MyXalytics

merged reports by up to 60%. Cross-source correlation reports now support real-time refresh intervals. Enhanced data blending logic adds outer join and union support. Report export now supports multi-source reports in PDF, Excel, and PowerPoint formats.

FOCUS-Aligned FinOps Standardization

MyXalytics will align with the FOCUS specification across AWS, Azure, GCP, and OCI, ensuring standardized cloud cost and usage data. This will enable improved consistency, transparency, and interoperability in FinOps reporting and analytics.

ClickHouse Integration for High-Performance Analytics

Enhanced our backend integrations with the addition of ClickHouse, complementing our existing Microsoft SQL Server support to deliver faster query execution and more scalable data processing and reporting.

ClickHouse is now powering System Performance, Application Performance, DEX and AEX integrations—enabling quicker insights, improved responsiveness, and seamless handling of large data volumes.

Score and Trend Reporting

In the Report Builder, a new Score and Trend visualization feature is being introduced. This feature allows users to add a widget that displays a key metric (Score) alongside its historical performance (Trend Line). It enables stakeholders to quickly understand the current performance as well as the overall direction of progress at a glance, all within a single, intuitive view.

Integrations

- Dell Apex AIOps: Enhanced the existing Dell Apex integration with additional data ingestion for AIOps alert correlation and infrastructure event data, enabling richer event lifecycle analysis within MyXalytics.
- vCenter: Introduced integration with VMware vCenter for virtual infrastructure discovery and inventory management. Data ingested includes datacenters, clusters, datastores, ESXi hosts, and virtual machines along with their configuration and relationship attributes via a SOAP API connector with scheduled batch ingestion.
- Systrack: Introduced integration with Lakeside Software Systrack for Digital Experience Monitoring (DEM) data. Data ingested includes device performance scores, application sentiment, session analytics, and crash analytics via a JDBC connector with scheduled batch ingestion.
- HCL BigFix AEX Enhancement: Introduced the integration with HCL BigFix AEX API's for Chat & Agentic Metrics.
- DataDog: Introduced native integration with DataDog for ingestion of APM metrics, infrastructure monitoring data, log analytics, and synthetic test results via the DataDog API with token-based authentication.

HCL MyXalytics

- HCL IEM (Intelligent Event Management): Introduced integration with the HCL IEM platform for enriched event correlation data ingestion via a Kafka event stream consumer with configurable topic mapping.

AIForce Personas: DWP and Hybrid Cloud

Introduced two new AIForce personas under the AIFORCE.OPS module:

DWP (Digital Workplace): Delivers end-to-end visibility into digital workplace health, application experience, device performance, and user productivity. Key dashboards include DWP Operations (Health Score, Application Experience Index, Device Health Overview, User Productivity Metrics, VDI Performance) and DWP Compliance (Software, Hardware, and Security Compliance).

Hybrid Cloud: Provides unified visibility and cost optimization across on-premises, private cloud, and public cloud environments. Key dashboards include Hybrid Cloud Operations (Multi-Cloud Cost Overview, Workload Distribution, Cloud Resource Health, Hybrid Connectivity Status) and Hybrid Cloud Optimization (Cloud Cost Optimization, Resource Rightsizing Recommendations, Reserved Instance Utilization).

3.2. Enhancements

Conditional Formatting for Badges and Icons

Report designers can now configure conditional formatting rules on Badge and Icon visualization elements. Rules support multi-condition logic (AND/OR) based on measure values and defined thresholds. The icon library has been expanded with 120 new icons across ITSM, Cloud, AI, and Operations categories. Animated badge states for real-time alert indicators and custom badge color palettes with hex color input are also supported.

Cache Service Optimization

The MyXalytics caching layer has been re-architected for improved performance and reliability. Key improvements include: intelligent pre-warming of cache for high-frequency dashboards based on usage patterns; a tiered cache architecture with L1 (in-memory), L2 (distributed Redis), and L3 (persistent disk) tiers; per-dataset and per-report configurable cache invalidation policies; a 35% reduction in memory footprint through improved data compression; and a Cache Hit Rate monitoring dashboard available under Platform Administration.

Certificate Expiry Tracking

Introduced a new Certificate Expiry Tracking capability that enables monitoring of SSL/TLS certificate expiry dates across managed applications and infrastructure. The feature scans certificate inventory and raises alerts for certificates expiring within configurable thresholds (30, 60, or 90 days). Integration with ServiceNow enables automated renewal ticket creation when certificates approach expiry.

Universe Configuration (Reporting meta data)

HCL MyXalytics

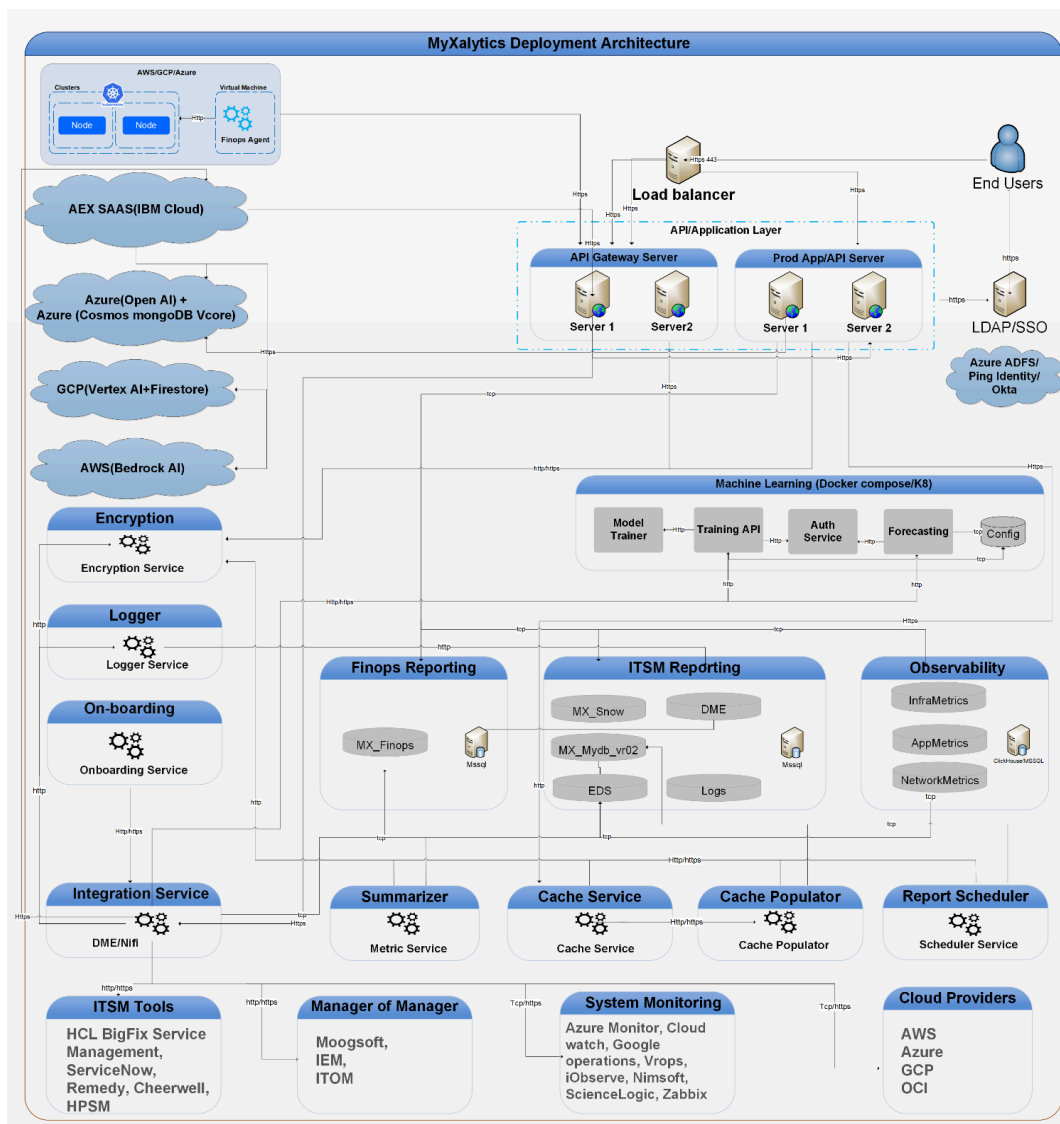
Introduced Universe Configuration console – Module to make it easier to manage ClickHouse tables. In this module, users can expose the clickhouse tables and fields for reporting, relate them with relationships, and add measures/aggregates for reporting. It helps organize data in a simple way so it can be used directly for reports.

Product Installer

Enhanced the installer to support ClickHouse database setup and configuration, including prerequisite validation and automated integration for a seamless installation experience.

4. HCL MyXalytics Deployment Architecture

HCL MyXalytics currently supports deployment on VM infrastructure Layer which can be hosted either in on-premise or public cloud environments.



HCL MyXalytics

Feature development for current release completed and verified	Pass/Fail	☑	
Quality objectives have been met for current release (including Unit/Functional/Load testing)	Pass/Fail	☑	
Export Classification with Country specific import requirements completed	Pass/Fail	☑	
Certificate of Originality Approved	Pass/Fail	☑	
OneTrust Product Privacy Assessment Approved	Pass/Fail	☑	
Threat Model and Secure Design Review	Pass/Fail	☑	
Security Testing - SAST	Pass/Fail	☑	
Security Testing - DAST	Pass/Fail	☑	
Security Testing – Pen Testing for OWASP Top 10 for Web and Gen AI	Pass/Fail	☑	
Open Source Vulnerability scanning via Mend	Pass/Fail	☑	
Security Hotspot, Code smell and Code quality analysis using SonarQube	Pass/Fail	☑	
Service Description document completed with HCLSW Legal	Pass/Fail	☑	
New Release Training delivered to PS and support team	Pass/Fail	☑	
Pricing approvals and CRM part code creation completion	Pass/Fail	☑	
Marketing activities completion (including GTM collaterals , Launch webinars, Sales enablement sessions etc).	Pass/Fail	☑	
Online Product documentation and lifecycle page update	Pass/Fail	☑	

6.2. Packages included in HCL MyXalytics

This section lists all core packages included in HCL MyXalytics, along with their license type, category, version, and description.

HCL MyXalytics

Category	Number of Packages
HCL MyXalytics Core	236
AI/ML Toolkit	111
Gen AI Component	79
Total	336

HCL MyXalytics Core Package List

Package Name	Version	Description	License Type
AjaxControlToolkit	20.1.0	Ajax Control Toolkit is a set of AJAX-enabled ASP.NET server controls for creating rich interactive web applications.	BSD-3-Clause
AutoFixture	4.18.1	AutoFixture makes it easier for developers to do Test-Driven Development by automating non-relevant Test Fixture Setup	MIT
AWSSDK.CloudSearch	3.7.400.50	Amazon Web Services SDK for .NET - Amazon CloudSearch client library for cloud-based search service.	Apache-2.0
AWSSDK.CloudWatch	3.7.401.47	Amazon Web Services SDK for .NET - Amazon CloudWatch client library for monitoring AWS resources.	Apache-2.0
AWSSDK.ConfigService	3.7.401.45	Amazon Web Services SDK for .NET - AWS Config client library for tracking AWS resource configurations.	Apache-2.0
AWSSDK.Core	3.7.400.49	Amazon Web Services SDK for .NET - Core runtime and shared utilities for all AWS service clients.	Apache-2.0
AWSSDK.DataPipeline	3.7.400.49	Amazon Web Services SDK for .NET - AWS Data Pipeline client library for data-driven workflow orchestration.	Apache-2.0
AWSSDK.IdentityManagement	3.7.402.43	Amazon Web Services SDK for .NET - AWS Identity and Access Management (IAM) client library.	Apache-2.0
AWSSDK.ImportExport	3.7.400.49	Amazon Web Services SDK for .NET - AWS Import/Export client library for large-scale data transfer.	Apache-2.0
AWSSDK.SecurityToken	3.7.400.49	Amazon Web Services SDK for .NET - AWS Security Token Service (STS) client library for temporary credentials.	Apache-2.0
Azure.Identity	1.13.1	Azure Identity client library for .NET - provides Microsoft Entra ID (Azure AD) token authentication support.	MIT
Azure.Identity	1.12.0	Azure Identity client library for .NET - provides Microsoft Entra ID (Azure AD) token authentication support	MIT
Azure.ResourceManager	1.13.0	Azure Resource Manager client library for .NET - provides management of Azure resources.	MIT
Azure.ResourceManager.ContainerService	1.2.2	Azure Resource Manager client library for Azure Kubernetes Service (AKS) management.	MIT
BouncyCastle.Cryptography	2.6.2	BouncyCastle.NET is a popular cryptography library for .NET providing a wide range of encryption hashing and signing	MIT

HCL MyXalytics

		algorithms.	
BouncyCastle.Cryptography	2.4.0	Comprehensive cryptographic algorithms and protocols library for .NET (C# implementation of Bouncy Castle APIs)	MIT
Castle.Core	5.1.0	Castle Core provides common Castle Project abstractions including proxying and logging services.	Apache-2.0
ClickHouse.Ado	2.0.2.2	ADO.NET client for ClickHouse database implements native ClickHouse protocol with data compression	MIT
Core.System.Configuration.Install	1.1.0	Porting of System.Configuration.Install for .NET Core (.NET 4.0 version).	MIT
coverlet.collector	6.0.4	Cross-platform code coverage library for .NET integrated as a data collector with dotnet test.	MIT
coverlet.collector	6.0.1	Cross-platform code coverage library for .NET with support for line branch and method coverage	MIT
CsvHelper	33.0.1	A library for reading and writing CSV files. Extremely fast flexible and easy to use.	Apache-2.0
DocumentFormat.OpenXml	2.16.0	The Open XML SDK provides tools for working with Office Word Excel and PowerPoint documents.	MIT
DocumentFormat.OpenXml	3.1.1	The Open XML SDK provides tools for working with Office Word Excel and PowerPoint documents in the Open XML format.	MIT
DocumentFormat.OpenXml	3.1.1	Open XML SDK for reading writing and manipulating Open XML documents (DOCX XLSX PPTX)	MIT
DocumentFormat.OpenXml.Framework	3.0.0	Framework package for the Open XML SDK providing core infrastructure for Open XML document manipulation.	MIT
Elastic.Apm	1.25.3	Elastic APM .NET Agent for application performance monitoring and distributed tracing.	Apache-2.0
Elastic.Apm.AspNetCore	1.26.0	Elastic APM .NET Agent for ASP.NET Core auto-instrumentation and distributed tracing	Apache-2.0
Elastic.Apm.AspNetCoreFullFramework	1.25.3	Elastic APM auto-instrumentation module for ASP.NET Full Framework applications.	Apache-2.0
Elastic.Apm.NetCoreAll	1.26.0	Elastic APM .NET Agent - convenient package that automatically pulls in ASP.NET Core and EF Core auto-instrumentation	Apache-2.0
EntityFramework	6.5.1	Entity Framework 6 (EF6) is a tried and tested object-relational mapper for .NET with many years of feature development and stabilization.	Apache-2.0
ExcelDataReader	3.6.0	Lightweight and fast library for reading Microsoft Excel files (xls andxlsx).	MIT
ExcelDataReader.DataSet	3.6.0	ExcelDataReader extension for converting Excel data to ADO.NET DataSet/Data Table.	MIT
FluentAssertions	6.12.0	Fluent API for asserting the results of unit tests providing more natural readable assertions	Apache-2.0
Google.Apis	1.68.0	Google APIs client library for .NET - core runtime support for Google API client libraries.	Apache-2.0
Google.Apis.Auth	1.68.0	Google APIs Auth client library for .NET - provides OAuth2 and service account authentication for Google APIs.	Apache-2.0
KubernetesClient	17.0.14	A .NET client library for the Kubernetes API providing typed access to Kubernetes resources.	Apache-2.0

HCL MyXalytics

MailKit	4.15.1	A cross-platform .NET mail client library for IMAP POP3 and SMTP built on top of MimeKit.	MIT
Microsoft.ApplicationInsights	2.22.0	Application Insights SDK for .NET to monitor live web applications for performance and usage.	MIT
Microsoft.AspNet.Cors	5.3.0	ASP.NET Web API CORS support for enabling Cross-Origin Resource Sharing in web applications.	Apache-2.0
Microsoft.AspNet.Mvc	5.3.0	ASP.NET MVC framework for building dynamic web applications using the Model-View-Controller pattern.	Apache-2.0
Microsoft.AspNet.Razor	3.3.0	ASP.NET Razor view engine for generating HTML markup with embedded C# code.	Apache-2.0
Microsoft.AspNet.WebApi	5.3.0	Meta-package for ASP.NET Web API framework for building RESTful HTTP services.	Apache-2.0
Microsoft.AspNet.WebApi.Client	6.0.0	Client libraries for consuming ASP.NET Web API services including HttpClient extensions.	Apache-2.0
Microsoft.AspNet.WebApi.Core	5.3.0	Core runtime assemblies for ASP.NET Web API framework.	Apache-2.0
Microsoft.AspNet.WebApi.Core	5.3.0	Core libraries for ASP.NET Web API providing the core programming model for HTTP services	Microsoft Software License
Microsoft.AspNet.WebApi.Cors	5.3.0	ASP.NET Web API package for enabling CORS (Cross-Origin Resource Sharing) support.	Apache-2.0
Microsoft.AspNet.WebApi.Owin	5.3.0	Enables hosting ASP.NET Web API within an OWIN application.	Apache-2.0
Microsoft.AspNet.WebApi.OwinSelfHost	5.3.0	OWIN self-hosting infrastructure for ASP.NET Web API.	Apache-2.0
Microsoft.AspNet.WebApi.WebHost	5.3.0	Enables hosting ASP.NET Web API within IIS using ASP.NET pipeline.	Apache-2.0
Microsoft.AspNet.WebPages	3.3.0	ASP.NET Web Pages framework for building dynamic web pages with Razor syntax.	Apache-2.0
Microsoft.AspNetCore.Authentication.Certificate	8.0.10	ASP.NET Core middleware for certificate-based authentication	MIT
Microsoft.AspNetCore.Authentication.JwtBearer	8.0.2 / 8.0.6	ASP.NET Core middleware that enables JWT bearer token authentication	MIT
Microsoft.AspNetCore.Http.Abstractions	2.3.0	ASP.NET Core HTTP object model for HTTP requests responses and common extension methods for registering middleware.	Apache-2.0
Microsoft.AspNetCore.Identity.EntityFrameworkCore	8.0.2	ASP.NET Core Identity provider that uses Entity Framework Core for user/role storage	MIT
Microsoft.AspNetCore.Mvc.Newtonsoft.Json	8.0.2	ASP.NET Core MVC features using Newtonsoft.Json (JSON.NET) as the default JSON serializer	MIT
Microsoft.AspNetCore.Mvc.ViewFeatures	2.2.0	ASP.NET Core MVC view rendering features including HTML helpers tag helpers and view components	Apache-2.0
Microsoft.AspNetCore.OpenApi	8.0.2	Provides APIs for annotating ASP.NET Core endpoints with OpenAPI metadata	MIT
Microsoft.AspNetCore.WebUtilities	2.2.0	Utility classes for working with HTTP headers query strings multipart messages and form data.	Apache-2.0
Microsoft.Bcl.AsyncInterfaces	8.0.0	Provides IAsyncEnumerable and IAsyncDisposable async interfaces for .NET Framework and .NET Standard.	MIT

HCL MyXalytics

Microsoft.CodeDom.Providers.DotNetCompilerPlatform	4.1.0	Replaces the default .NET CodeDom providers with Roslyn-based compilers for C# and VB.	MIT
Microsoft.CSharp	4.7.0	Provides support for C# dynamic binding and compilation at runtime.	MIT
Microsoft.Data.SqlClient	5.2.2	The current data provider for SQL Server and Azure SQL databases providing ADO.NET data access.	MIT
Microsoft.Data.SqlClient	5.1.5 / 5.2.0 / 5.2.1 / 6.0.1	Microsoft ADO.NET data provider for SQL Server and Azure SQL Database	MIT
Microsoft.Diagnostics.Tracing.TraceEvent	3.1.8	Library for reading and processing ETW (Event Tracing for Windows) trace data.	MIT
Microsoft.EntityFrameworkCore	8.0.17	Entity Framework Core is a modern object-database mapper for .NET supporting LINQ queries change tracking updates and schema migrations.	MIT
Microsoft.EntityFrameworkCore.SqlServer	8.0.17	Microsoft SQL Server database provider for Entity Framework Core.	MIT
Microsoft.Extensions.Caching.Abstractions	8.0.0	Abstractions for in-memory and distributed caching in .NET applications.	MIT
Microsoft.Extensions.Caching.Abstractions	9.0.7	Caching abstractions for in-memory and distributed cache implementations in .NET.	MIT
Microsoft.Extensions.Caching.Memory	8.0.1	In-memory caching implementation of Microsoft.Extensions.Caching.Memory.IMemoryCache	MIT
Microsoft.Extensions.Configuration	8.0.0	Implementation of key-value pair based configuration for Microsoft.Extensions.Configuration	MIT
Microsoft.Extensions.Configuration.Abstractions	9.0.6	Abstractions of key-value pair based configuration for .NET applications.	MIT
Microsoft.Extensions.Configuration.Abstractions	8.0.0	Abstractions for key-value pair based configuration	MIT
Microsoft.Extensions.DependencyInjection	8.0.0	Default implementation of the dependency injection container for .NET applications.	MIT
Microsoft.Extensions.DependencyInjection.Abstractions	8.0.0	Abstractions for dependency injection in .NET defining the IServiceCollection and IServiceProvider interfaces.	MIT
Microsoft.Extensions.DependencyInjection.Abstractions	8.0.0	Abstractions for dependency injection including IServiceCollection and IServiceProvider	MIT
Microsoft.Extensions.Hosting	8.0.0 / 8.0.1	.NET hosting and startup infrastructure for building generic host-based applications	MIT
Microsoft.Extensions.Hosting.WindowsServices	9.0.6	Infrastructure for hosting .NET applications as Windows Services using the generic host.	MIT
Microsoft.Extensions.Hosting.WindowsServices	8.0.0 / 8.0.1	Infrastructure for hosting .NET applications as Windows Services	MIT
Microsoft.Extensions.Logging	8.0.0	Default implementation of the logging infrastructure for .NET applications.	MIT
Microsoft.Extensions.Logging.Abstractions	8.0.0	Logging abstractions for .NET providing the ILogger and ILoggerFactory interfaces.	MIT
Microsoft.Extensions.Logging.Abstractions	8.0.0	Logging abstractions for Microsoft.Extensions.Logging	MIT
Microsoft.Extensions.Options	8.0.2	Provides the options pattern implementation for configuring	MIT

HCL MyXalytics

		strongly typed settings in .NET.	
Microsoft.Extensions.Primitives	8.0.0	Primitive types such as StringValues and CancellationToken shared across .NET Extensions libraries.	MIT
Microsoft.Identity.Client	4.61.3	Microsoft Authentication Library (MSAL) for .NET - enables token acquisition from Microsoft identity platform	MIT
Microsoft.IdentityModel.Abstractions	7.3.1	Abstractions for Microsoft.IdentityModel token validation and security token handling.	MIT
Microsoft.IdentityModel.JsonWebTokens	7.3.1	Library for creating serializing and validating JSON Web Tokens (JWT).	MIT
Microsoft.IdentityModel.Logging	7.3.1	Logging infrastructure for Microsoft IdentityModel libraries.	MIT
Microsoft.IdentityModel.Tokens	7.3.1	Security token types cryptographic operations and key management for identity scenarios.	MIT
Microsoft.IdentityModel.Tokens	7.4.0	Includes types that provide support for SecurityTokens cryptographic keys and XML security	MIT
Microsoft.Net.Http.Headers	2.2.0	HTTP header parsing and manipulation library for ASP.NET Core.	Apache-2.0
Microsoft.NET.Test.Sdk	17.8.0	The MSBuild targets and properties for building .NET test projects. Required for test discovery and execution.	MIT
Microsoft.NET.Test.Sdk	17.8.0	The MSBuild targets and properties for building .NET Test projects	MIT
Microsoft.Owin	4.2.2	Provides core OWIN types and a helper utility for building OWIN-based middleware.	Apache-2.0
Microsoft.Owin.Host.HttpListener	4.2.2	OWIN server built on the .NET HttpListener class for self-hosting scenarios.	Apache-2.0
Microsoft.Owin.Host.SystemWeb	4.2.2	OWIN server that enables OWIN-based applications to run on IIS via the ASP.NET request pipeline.	Apache-2.0
Microsoft.Owin.Hosting	4.2.2	Provides OWIN startup and hosting infrastructure for self-host and IIS-hosted scenarios.	Apache-2.0
Microsoft.Owin.Security	4.2.2	Common types used by OWIN-based authentication middleware implementations.	Apache-2.0
Microsoft.Owin.Security.Cookies	4.2.2	OWIN middleware for cookie-based authentication in web applications.	Apache-2.0
Microsoft.Owin.Security.Jwt	4.2.2	OWIN middleware for validating and processing JSON Web Tokens (JWT) in authentication flows.	Apache-2.0
Microsoft.Owin.Security.OAuth	4.2.2	OWIN middleware for OAuth 2.0 authorization server and resource server functionality.	Apache-2.0
Microsoft.SqlServer.Server	1.0.0	Provides the core SQL Server types needed for SqlDataReader and related functionality.	MIT
Microsoft.Testing.Extensions.Telemetry	1.5.3	Telemetry extension for Microsoft Testing Platform to collect test execution metrics.	MIT
Microsoft.Testing.Extensions.TrxReport.Abstractions	1.5.3	Abstractions for TRX report generation in Microsoft Testing Platform.	MIT
Microsoft.Testing.Extensions.VSTestBridge	1.5.3	Bridge between Microsoft Testing Platform and VSTest for backward compatibility.	MIT
Microsoft.Testing.Platform	1.5.3	Microsoft Testing Platform providing a lightweight and	MIT

HCL MyXalytics

		extensible test execution engine.	
Microsoft.Testing.Platform.MSBuild	1.5.3	MSBuild integration for Microsoft Testing Platform.	MIT
Microsoft.TestPlatform.ObjectModel	17.12.0	Object model for the Visual Studio Test Platform used by test adapters and frameworks.	MIT
Microsoft.Web.Infrastructure	2.0.1	Provides infrastructure for dynamically registering HTTP modules at runtime.	MS-EULA
Microsoft.Win32.Registry	5.0.0	Provides access to the Windows Registry key-value store.	MIT
MimeKit	4.15.1	A cross-platform .NET MIME creation and parser library with support for S/MIME PGP DKIM and TNEF.	MIT
Moq	4.18.2	Popular .NET mocking framework for creating mock objects in unit tests.	BSD-3-Clause
Moq	4.20.72	The most popular and friendly mocking framework for .NET supporting Linq to Mocks.	BSD-3-Clause
Moq	4.20.70	Most popular mocking library for .NET enabling creation of mock objects for unit testing	BSD-3-Clause
MSTest.TestAdapter	2.2.10	Test adapter for running MSTest v2 tests through Visual Studio Test Platform.	MIT
MSTest.TestFramework	2.2.10	MSTest v2 unit testing framework for writing and running .NET tests.	MIT
MySqlConnection	2.4.0	A high-performance async MySQL and MariaDB ADO.NET data provider for .NET.	MIT
NEST	7.17.5	Strongly typed interface to Elasticsearch with fluent and object initializer mappings of requests and responses.	Apache-2.0
Newtonsoft.Json	13.0.3	Popular high-performance JSON framework for .NET for serializing and deserializing JSON.	MIT
Newtonsoft.Json	13.0.3	Popular high-performance JSON framework for .NET supporting serialization deserialization LINQ to JSON and more.	MIT
Newtonsoft.Json	13.0.3	High-performance JSON serializer/deserializer for .NET (Json.NET)	MIT
Newtonsoft.Json.Bson	1.0.2	Adds BSON (Binary JSON) reading and writing support for Newtonsoft.Json.	MIT
Npgsql	8.0.5	The open source .NET data provider for PostgreSQL allowing ADO.NET access to PostgreSQL databases.	PostgreSQL (MIT-like)
Npgsql	10.0.0	Open source .NET data provider for PostgreSQL database	PostgreSQL License
NuGet.Common	6.9.1	NuGet common library providing shared types and utilities	Apache-2.0
NuGet.Protocol	6.9.1	NuGet's implementation for interacting with NuGet feeds (HTTP local folder V2 V3)	Apache-2.0
NUnit	3.13.1	NUnit is a unit-testing framework for all .NET languages with a rich set of assertions.	MIT
NUnit	3.14.0	NUnit is a unit-testing framework for all .NET languages with a rich set of assertions and test attributes.	MIT
NUnit	3.13.3	Unit testing framework for all .NET languages (NUnit 3)	MIT
NUnit.Analyzers	4.6.0	Roslyn analyzers for NUnit providing compile-time diagnostics and code fixes.	MIT

HCL MyXalytics

NUnit.Analyzers	3.9.0	Roslyn analyzers for writing unit tests with NUnit providing diagnostics and code fixes.	MIT
NUnit.Analyzers	3.6.1	Roslyn analyzers for writing NUnit unit tests providing code analysis and diagnostics	MIT
NUnit3TestAdapter	5.0.0	Test adapter for running NUnit 3 tests in Visual Studio and dotnet test.	MIT
NUnit3TestAdapter	4.5.0	NUnit 3 adapter for running NUnit tests in Visual Studio and dotnet test.	MIT
NUnit3TestAdapter	4.5.0	NUnit 3 adapter for running tests in Visual Studio and dotnet test	MIT
Ocelot	24.0.0	.NET API Gateway - provides routing authentication authorization rate limiting load balancing and more	MIT
Owin	1	OWIN (Open Web Interface for .NET) interface definition package.	Apache-2.0
OwinHost	4.2.2	Standalone OWIN host executable for running OWIN-based web applications.	Apache-2.0
PagedList	1.17.0.0	Library for easily paging through any IEnumerable/IQueryable in .NET.	MIT
PagedList.Mvc	4.5.0.0	ASP.NET MVC HTML helper for rendering paged list pager controls.	MIT
ParallelExtensionsExtras	1.2.0	A strong-named library providing useful extensions for Task Parallel Library (TPL) and PLINQ.	MS-LPL (Microsoft Limited Public License)
Portable.BouncyCastle	1.9.0	Portable version of Bouncy Castle cryptographic library for .NET Standard	MIT
PuppeteerSharp	10.0.0	.NET port of Puppeteer for headless Chrome/Chromium browser automation.	MIT
SAMLComponentV20	7.0.0	SAML 2.0 component for Single Sign-On (SSO) authentication integration.	Proprietary
Serilog	4.3.0	Simple .NET logging with fully-structured events and support for a wide variety of sinks.	Apache-2.0
Serilog.AspNetCore	9.0.0	Serilog integration for ASP.NET Core providing request logging and host-level configuration.	Apache-2.0
Serilog.AspNetCore	8.0.1	Serilog integration for ASP.NET Core including request logging middleware	Apache-2.0
Serilog.Enrichers.Environment	2.3.0	Serilog enricher that adds machine name and environment properties to log events	Apache-2.0
Serilog.Enrichers.Process	2.0.2	Serilog enricher that adds process ID to log events	Apache-2.0
Serilog.Enrichers.Thread	3.1.0	Serilog enricher that adds thread ID and thread name to log events	Apache-2.0
Serilog.Expressions	5.1.0-dev-02301	An expression-based filtering and formatting plugin for Serilog.	Apache-2.0
Serilog.Expressions	4.0.0	Expression-based filtering enrichment and formatting for Serilog	Apache-2.0
Serilog.Formatting.Compact	2.0.0	Compact JSON event formatter for Serilog for efficient structured log storage	Apache-2.0

HCL MyXalytics

Serilog.Settings.Configuration	8.0.0	Microsoft.Extensions.Configuration support for Serilog (read settings from appsettings.json)	Apache-2.0
Serilog.Sinks.Async	2.1.0	An asynchronous wrapper sink for Serilog to offload log event processing to a background thread.	Apache-2.0
Serilog.Sinks.Async	1.5.0	Asynchronous wrapper for other Serilog sinks enabling non-blocking log event writing	Apache-2.0
Serilog.Sinks.Console	6.0.1-dev-00953	A Serilog sink that writes log events to the console/terminal with support for themes and formatting.	Apache-2.0
Serilog.Sinks.File	7.0.0	A Serilog sink that writes log events to text files with support for rolling policies.	Apache-2.0
Serilog.Sinks.MSSqlServer	8.2.0	A Serilog sink that writes log events to Microsoft SQL Server and Azure SQL.	Apache-2.0
Serilog.Sinks.MSSqlServer	6.6.0	Serilog sink that writes log events to Microsoft SQL Server	Apache-2.0
SharpZipLib	1.3.3	Compression library supporting Zip GZip Tar and BZip2 formats for .NET.	MIT
SSH.NET	2024.2.0	A .NET library for SSH and SFTP providing SSH command execution SFTP file transfers and port forwarding.	MIT
Swashbuckle.AspNetCore	6.6.2	Swagger tooling for APIs built with ASP.NET Core generating Swagger/OpenAPI documentation and Swagger UI.	MIT
Swashbuckle.AspNetCore	6.4.0 / 6.5.0	Swagger tooling for ASP.NET Core APIs - generates Swagger/OpenAPI documentation with embedded UI	MIT
System.Buffers	4.5.1	Provides resource pooling of ArrayPool<T> for improved memory management.	MIT
System.Collections	4.3.0	Provides classes that define generic and non-generic collection objects.	MIT
System.Collections.Immutable	8.0.0	Thread-safe immutable collection classes including ImmutableList ImmutableDictionary and more.	MIT
System.Configuration.ConfigurationManager	8.0.1	Provides access to configuration files (app.config/web.config) for .NET applications.	MIT
System.Configuration.ConfigurationManager	9.0.7	Provides access to configuration files (app.config) for applications using the ConfigurationManager API.	MIT
System.Configuration.ConfigurationManager	8.0.0	Provides access to configuration files (app.config/web.config) via ConfigurationManager	MIT
System.Data.Common	4.3.0	Provides base classes and interfaces for ADO.NET data providers	MIT
System.Data.DataSetExtensions	4.5.0	Extends ADO.NET DataSet functionality with LINQ-enabled methods for DataTable and DataRow.	MIT
System.Data.Odbc	9.0.0	Provides ADO.NET data access to ODBC data sources via the OdbcConnection and OdbcCommand classes.	MIT
System.Data.Odbc	10.0.0	.NET data provider for ODBC data sources	MIT
System.Data.OleDb	9.0.0	Provides ADO.NET data access to OLE DB data sources via the OleDbConnection and OleDbCommand classes.	MIT
System.Data.SqlClient	4.9.0	The legacy ADO.NET data provider for SQL Server providing SqlConnection and SqlCommand for database access.	MIT
System.Data.SqlClient	4.9.0	ADO.NET data provider for SQL Server (legacy superseded by Microsoft.Data.SqlClient)	MIT
System.Diagnostics.DiagnosticTools	8.0.0	Provides APIs for rich diagnostics payloads and in-process	MIT

HCL MyXalytics

cSource		event correlation.	
System.Diagnostics.EventLog	9.0.7	Provides the EventLog class for interacting with Windows event logs.	MIT
System.Diagnostics.PerformanceCounter	8.0.0	Provides access to Windows performance counters for monitoring application metrics.	MIT
System.DirectoryServices	9.0.0	Provides access to Active Directory Domain Services from managed code via the DirectoryEntry and DirectorySearcher classes.	MIT
System.DirectoryServices.AccountManagement	9.0.0	Provides uniform access and manipulation of user group and computer security principals across directory stores.	MIT
System.Formats.Asn1	9.0.0	Provides reading and writing ASN.1 (Abstract Syntax Notation One) encoded data following ITU-T X.680 standard.	MIT
System.Formats.Asn1	8.0.1	Provides reader and writer types for ASN.1 (BER/CER/DER) encoded data	MIT
System.IdentityModel.Tokens.Jwt	7.3.1	Includes support for creating serializing and validating JSON Web Tokens (JWT).	MIT
System.IdentityModel.Tokens.Jwt	7.4.0	Includes types for creating serializing and validating JSON Web Tokens (JWT)	MIT
System.IO	4.3.0	Provides base input and output (I/O) types for reading and writing to streams.	MIT
System.IO	4.3.0	Provides base input and output types including Stream StreamReader and StreamWriter.	MIT
System.Linq	4.3.0	Provides classes and interfaces that support LINQ queries on objects implementing IEnumerable<T>.	MIT
System.Management	9.0.0	Provides access to Windows Management Instrumentation (WMI) infrastructure for managing system resources.	MIT
System.Memory	4.5.5	Provides Span<T> and Memory<T> types for efficient memory access without allocations.	MIT
System.Net.Http	4.3.4	Provides HttpClient and related classes for sending HTTP requests and receiving responses.	MIT
System.Net.Http	4.3.4	Provides HTTP client components (HttpClient) for sending HTTP requests	MIT
System.Numerics.Vectors	4.5.0	Provides SIMD-accelerated vector types for high-performance numeric computations.	MIT
System.Reflection.Metadata	8.0.0	Provides a low-level reader for reading .NET metadata from assemblies (ECMA-335).	MIT
System.Runtime	4.3.1	Provides fundamental runtime types including Object String and Array.	MIT
System.Runtime.Caching	8.0.1	Provides in-memory object caching with MemoryCache for .NET applications.	MIT
System.Runtime.Caching	8.0.1	Provides in-memory caching via System.Runtime.Caching.MemoryCache	MIT
System.Runtime.CompilerServices.Unsafe	6.0.0	Provides the Unsafe class for low-level pointer and memory manipulation in managed code.	MIT
System.Security.AccessControl	6.0.0	Provides types for managing access control lists (ACLs) and security descriptors on Windows.	MIT
System.Security.Cryptography	4.3.1	Provides cryptographic algorithm implementations including	MIT

HCL MyXalytics

Algorithms		AES RSA SHA and HMAC.	
System.Security.Cryptography.Encoding	4.3.0	Provides types for reading and writing ASN.1 and other cryptographic encodings.	MIT
System.Security.Cryptography.Pkcs	8.0.0	Provides support for PKCS#7 and CMS (Cryptographic Message Syntax) operations	MIT
System.Security.Cryptography.Primitives	4.3.0	Provides base types for cryptographic operations such as hashing and encryption.	MIT
System.Security.Cryptography.ProtectedData	9.0.7	Provides access to Windows Data Protection API (DPAPI) for encrypting and decrypting data.	MIT
System.Security.Cryptography.ProtectedData	8.0.0	Provides access to Windows Data Protection API (DPAPI) for encrypting/decrypting data	MIT
System.Security.Cryptography.X509Certificates	4.3.2	Provides types for reading exporting and verifying X.509 v3 certificates.	MIT
System.Security.Cryptography.Xml	7.0.0	Provides support for XML Encryption and XML Digital Signatures	MIT
System.Security.Permissions	8.0.0	Provides types for controlling access to operations via code access security permissions	MIT
System.Security.Principal.Windows	5.0.0	Provides Windows identity and principal classes for authentication and authorization.	MIT
System.Text.Encodings.Web	8.0.0	Provides HTML JavaScript and URL encoder types for safe encoding of untrusted input.	MIT
System.Text.Encodings.Web	4.7.2	Provides types for encoding/escaping strings for safe embedding in HTML JavaScript and URLs	MIT
System.Text.Json	8.0.5	High-performance low-allocating JSON serialization/deserialization library for .NET.	MIT
System.Text.Json	9.0.6	High-performance low-allocating JSON serialization and deserialization library for .NET.	MIT
System.Text.Json	9.0.2 / 9.0.8	High-performance low-allocating JSON serializer/deserializer for .NET	MIT
System.Text.RegularExpressions	4.3.1	Provides Regex class for pattern matching with regular expressions	MIT
System.Threading	4.3.0	Provides primitive types for threading synchronization such as ManualResetEvent and Mutex.	MIT
System.Threading.Tasks.Dataflow	8.0.0	Provides dataflow components (BufferBlock ActionBlock etc.) for actor-based programming models.	MIT
System.Threading.Tasks.Extensions	4.5.4	Provides ValueTask<T> and related types for efficient async task management.	MIT
System.ValueTuple	4.5.0	Provides the ValueTuple struct types used by C# tuples syntax.	MIT
YamlDotNet	16.3.0	A .NET library for YAML serialization and deserialization providing a low-level event-based interface and high-level object model.	MIT
@progress/kendo-data-query	^1.7.1	Kendo UI Data Query library for client-side data operations (filtering sorting grouping aggregation).	Apache-2.0
@progress/kendo-drawing	^1.21.2	Kendo UI Drawing library providing a cross-browser drawing API with SVG and Canvas output.	Apache-2.0
@progress/kendo-licensing	^1.7.1	Kendo UI licensing module for managing Progress Telerik Kendo UI product licenses.	Apache-2.0

HCL MyXalytics

@progress/kendo-react-animation	^12.0.1	KendoReact Animation component for adding enter/exit transition effects to React elements.	Commercial
@progress/kendo-react-buttons	^12.0.1	KendoReact Buttons components including Button ButtonGroup DropDownButton and SplitButton.	Commercial
@progress/kendo-react-common	^12.0.1	Common utilities and shared infrastructure for KendoReact component suite.	Commercial
@progress/kendo-react-data-tools	^12.0.1	KendoReact Data Tools providing Pager and other data management utilities.	Commercial
@progress/kendo-react-dateinputs	^12.0.1	KendoReact Date Inputs including Calendar DatePicker TimePicker and DateRangePicker.	Commercial
@progress/kendo-react-dropdowns	^12.0.1	KendoReact DropDown components including DropDownList ComboBox AutoComplete and MultiSelect.	Commercial
@progress/kendo-react-grid	^12.0.1	KendoReact Data Grid component for tabular data display with sorting filtering and paging.	Commercial
@progress/kendo-react-indicators	^12.0.1	KendoReact Indicators including Loader and Skeleton components for loading states.	Commercial
@progress/kendo-react-inputs	^12.0.1	KendoReact Input components including TextBox NumericTextBox MaskedTextBox Switch and Slider.	Commercial
@progress/kendo-react-intl	^12.0.1	KendoReact Internationalization library for number and date formatting with locale support.	Commercial
@progress/kendo-react-popup	^12.0.1	KendoReact Popup component for displaying content in a floating container positioned relative to an anchor.	Commercial
@progress/kendo-theme-default	^12.0.1	Default theme for Kendo UI and KendoReact components providing consistent visual styling.	Apache-2.0

AI/ML Toolkit Package List

Package Name	Version	Description	License Type
Flask-Cors	6.0.0	A Flask extension simplifying CORS support	MIT
SQLAlchemy	2.0.41	Database Abstraction Library	MIT
aif360	0.6.1	IBM AI Fairness 360	Apache 2.0
aiofiles	24.1.0	File support for asyncio.	Apache 2.0
alibi	0.9.6	Algorithms for monitoring and explaining machine learning models	Apache 2.0
arch	7.2.0	ARCH for Python	Illinois/NCSA
authlib	1.6.0	The ultimate Python library in building OAuth and OpenID Connect servers and clients.	BSD 3
autokeras	2.0.0	AutoML for deep learning	Apache 2.0
beautifulsoup4	4.13.4	Screen-scraping library	MIT
bleach	6.2.0	An easy safelist-based HTML-sanitizing tool.	Apache 2.0
blis	0.7.11	The Blis BLAS-like linear algebra library, as a self-contained C-extension.	BSD
bs4	0.0.2	Dummy package for Beautiful Soup (beautifulsoup4)	MIT
catboost	1.2.8	CatBoost Python Package	Apache 2.0

HCL MyXalytics

category_encoders	2.8.1	A package for encoding categorical variables for machine learning	BSD 3
chardet	5.2.0	Universal encoding detector for Python 3	LGPL 2.1
confluent-kafka	2.10.1	Confluent's Python client for Apache Kafka	Apache 2.0
contractions	0.1.73	Fixes contractions such as you're to you are	MIT
cython	>=3.0.6	The Cython compiler for writing C extensions in the Python language.	Apache 2.0
demoji	1.1.0	Accurately remove and replace emojis in text strings	Apache 2.0
docker	7.1.0	A Python library for the Docker Engine API.	Apache 2.0
dython	0.7.9	A set of data tools in Python	MIT
evidently	0.7.8	Open-source tools to analyze, monitor, and debug machine learning model in production.	Apache 2.0
fastapi	0.115.12	FastAPI framework, high performance, easy to learn, fast to code, ready for production	MIT
flask_restful	0.3.10	Simple framework for creating REST APIs	BSD
gpytorch	1.14	An implementation of Gaussian Processes in Pytorch	MIT
gunicorn	23.0.0	WSGI HTTP Server for UNIX	MIT
gym	0.23.0	Gym: A universal API for reinforcement learning environments	MIT
hdfs	2.7.3	HdfsCLI: API and command line interface for HDFS.	MIT
holidays	>=0.25,<1	Open World Holidays Framework	MIT
html2docx	1.6.0	Convert valid HTML input to docx.	MIT
httplib	0.28.1	The next generation HTTP client.	BSD
hyperopt	0.2.7	Distributed Asynchronous Hyperparameter Optimization	BSD
imbalanced-learn	0.13.0	Toolbox for imbalanced dataset in machine learning	MIT
influxdb	5.3.2	InfluxDB client	MIT
ipython	9.2.0	IPython: Productive Interactive Computing	BSD 3
jinja2	3.1.6	A very fast and expressive template engine.	BSD
joblib	1.5.1	Lightweight pipelining with Python functions	BSD 3
kaleido	0.2.1	Static image export for web-based visualization libraries with zero dependencies	MIT
keras-tuner	1.4.7	A Hyperparameter Tuning Library for Keras	Apache 2.0
kneed	0.8.5	Knee-point detection in Python	BSD 3
lightgbm	4.6.0	LightGBM Python-package	MIT
lightkube	0.17.1	Lightweight kubernetes client library	MIT
loguru	0.7.3	Python logging made (stupidly) simple	MIT
markdown	3.8.2	Python implementation of John Gruber's Markdown.	BSD 3
matplotlib	3.10.3	Python plotting package	Python 2.0
mlflow	3.1.1	MLflow is an open source platform for the complete machine learning lifecycle	Apache 2.0
natsort	8.4.0	Simple yet flexible natural sorting in Python.	MIT
nltk	3.9.1	Natural Language Toolkit	Apache 2.0

HCL MyXalytics

numexpr	2.11.0	Fast numerical expression evaluator for NumPy	MIT
numpy	1.26.0	Fundamental package for array computing in Python	BSD 3
onnx	1.18.0	Open Neural Network Exchange	Apache 2.0
onnxmltools	1.14.0	Converts Machine Learning models to ONNX	Apache 2.0
onnxruntime	1.22.0	ONNX Runtime is a runtime accelerator for Machine Learning models	MIT
openpyxl	3.1.5	A Python library to read/write Excel 2010 xlsx/xlsm files	MIT
optuna	4.4.0	A hyperparameter optimization framework	MIT
pandas	2.3.0	Powerful data structures for data analysis, time series, and statistics	BSD 3
passlib	1.7.4	comprehensive password hashing framework supporting over 30 schemes	BSD 3
pdfkit	1.0.0	Wkhtmltopdf python wrapper to convert html to pdf using the webkit rendering engine and qt	MIT
pdfplumber	0.11.7	Plumb a PDF for detailed information about each char, rectangle, and line.	MIT
plotly	>=5.24.1,<6		
pmdarima	2.0.4	Python's forecast::auto.arima equivalent	MIT
postgres	4.0	postgres is a high-value abstraction over psycopg2.	MIT
premailer	3.10.0	Turns CSS blocks into style attributes	Python 2.0
prophet	1.1.7	Automatic Forecasting Procedure	MIT
protobuf	5.29.5	No project description provided	BSD 3
psutil	7.0.0	Cross-platform lib for process and system monitoring in Python. NOTE: the syntax of this script MUST be kept compatible with Python 2.7.	BSD 3
psycopg2-binary	2.9.9	psycopg2 - Python-PostgreSQL Database Adapter	LGPL
pydantic	2.11.7	Data validation using Python type hints	MIT
pyicu	2.15.2	Python extension wrapping the ICU C++ API	MIT
pymysql	1.1.1	Pure Python MySQL Driver	MIT
pyodbc	5.2.0	DB API module for ODBC	MIT No Attribution
pyspark	3.5.5	Apache Spark Python API	Apache 2.0
pyspellchecker	0.8.2	Pure python spell checker based on work by Peter Norvig	MIT
pytest-asyncio	1.0.0	Pytest support for asyncio	Apache 2.0
pytest-cov	6.2.1	Pytest plugin for measuring coverage.	MIT
pytest-mock	3.14.1	Thin-wrapper around the mock package for easier use with pytest	MIT
pytest	8.4.1	pytest: simple powerful testing with Python	MIT
python-dotenv	1.1.1	Read key-value pairs from a .env file and set them as environment variables	BSD
python-keycloak	5.6.0	python-keycloak is a Python package providing access to the Keycloak API.	MIT
python-magic	0.4.27	File type identification using libmagic	MIT
python-multipart	0.0.20	A streaming multipart parser for Python	Apache 2.0
rank_bm25	0.2.2	Various BM25 algorithms for document ranking	Apache 2.0

HCL MyXalytics

redis	6.2.0	Python client for Redis database and key-value store	MIT
reportlab	4.4.2	The Reportlab Toolkit	BSD
requests	2.32.4	Python HTTP for Humans.	Apache 2.0
scikit-learn	1.6.1	A set of python modules for machine learning and data mining	BSD 3
scipy	1.15.3	Fundamental algorithms for scientific computing in Python	BSD
seaborn	0.13.2	Statistical data visualization	BSD
setuptools	78.1.1	Easily download, build, install, upgrade, and uninstall Python packages	MIT
shap	0.43.0	A unified approach to explain the output of any machine learning model.	MIT
skl2onnx	1.19.1	Convert scikit-learn models to ONNX	Apache 2.0
spacy	3.6.1	Industrial-strength Natural Language Processing (NLP) in Python	MIT
spark-nlp	6.0.3	John Snow Labs Spark NLP is a natural language processing library built on top of Apache Spark ML. It provides simple, performant & accurate NLP annotations for machine learning pipelines, that scale easily in a distributed environment.	Apache 2.0
sshtunnel	0.4.0		
statsmodels	0.14.4	Statistical computations and models for Python	BSD
streamlit	1.45.1	A faster way to build and share data apps	Apache 2.0
tabulate	0.9.0	Pretty-print tabular data	MIT
tensorflow	2.18.1	TensorFlow is an open source machine learning framework for everyone.	Apache 2.0
textblob	0.19.0	Simple, Pythonic text processing. Sentiment analysis, part-of-speech tagging, noun phrase parsing, and more.	MIT
tf-agents	0.16.0	TF-Agents: A Reinforcement Learning Library for TensorFlow	Apache 2.0
thinc	8.1.12	A refreshing functional take on deep learning, compatible with your favorite libraries	MIT
uq360	0.1.1	IBM Uncertainty Quantification 360	Apache 2.0
uvicorn[standard]	0.34.3	The lightning-fast ASGI server.	BSD
weasyprint	62.3	The Awesome Document Factory	BSD
wheel	0.46.1	Command line tool for manipulating wheel files	MIT
word2number	1.1	Convert number words eg. three hundred and forty two to numbers (342).	MIT
wordcloud	1.9.4	A little word cloud generator	MIT
xgboost	3.0.2	XGBoost Python Package	Apache 2.0
xhtml2pdf	0.2.17	PDF generator using HTML and CSS	Apache 2.0
pyarrow	16.1.0	Python library for Apache Arrow	Apache 2.0

Gen AI Component Package List

Package Name	Version	Description	License Type
@aws-sdk/client-ec2	3.910.0	AWS SDK for JavaScript (v3) client for Amazon EC2.	Apache-2.0
@azure/arm-compute	22.4.0	Azure ComputeManagement client library for JavaScript/TypeScript.	MIT

HCL MyXalytics

@azure/identity	4.13.0	Azure Identity library for Microsoft Entra ID token-based authentication.	MIT
@google-cloud/translate	9.2.1	Node.js client for the Google Cloud Translation API.	Apache-2.0
@ibm-cloud/cloudant	0.12.10	IBM Cloudant Node.js SDK for interacting with your Cloudant database.	Apache-2.0
@ibm-functions/iam-token-manager	1.0.3	Helper utilities for managing IBM Cloud IAM tokens.	Apache-2.0
@node-saml/passport-saml	5.1.0	SAML 2.0 authentication provider for Passport, the Node.js authentication library.	MIT
@socket.io/redis-adapter	8.3.0	A Redis-based adapter for Socket.IO to scale across multiple Node.js instances.	MIT
@zilliz/milvus2-sdk-node	2.6.1	Node.js SDK for Zilliz Milvus, a vector database management system.	Apache-2.0
adaptive-expressions	4.22.1	Common expression language library for evaluating conditions in conversational AI systems.	MIT
adaptivecards	1.2.3,2.11.3	JavaScript library for rendering Adaptive Cards in HTML clients.	MIT
adaptivecards-templating	2.3.1	Adaptive Card data binding and templating engine for JavaScript.	MIT
async	0.9.2,2.6.4,3.2.6	Utility module providing straight-forward, powerful functions for working with asynchronous JavaScript.	MIT
aws-sdk	2.1692.0	Amazon Web Services SDK for JavaScript (v2, now in maintenance mode).	Apache-2.0
axios	1.12.0,1.12.2	Promise-based HTTP client for the browser and Node.js.	MIT
bcrypt	5.1.1	A library for hashing passwords using the bcrypt algorithm.	MIT
botbuilder	4.23.3	Core library for building conversational AI experiences with the Microsoft Bot Framework SDK.	MIT
botframework-connector	4.23.3	Client library for accessing the Bot Connector and Bot State REST APIs.	MIT
busboy	1.6.0	A node.js module for parsing incoming HTML form data.	MIT
compression	1.8.1	Node.js compression middleware for Express and Connect.	MIT
connect-flash	0.1.1	Flash message middleware for Connect/Express that stores messages in the session.	MIT
connect-redis	6.1.3	Redis session store for Connect and Express.	MIT
cookie-parser	1.4.7	HTTP cookie parsing middleware for Express.	MIT
deepmerge	3.3.0	A library for deeply merging the properties of two or more objects.	MIT
eld	1.0.1	A minimalist JavaScript utility library with functions for array and object manipulation. (Based on general utility name)	MIT
email-signature-detector	0.0.6	Detects and removes email signatures from email body content.	MIT
exceljs	4.4.0	Read, write, and manipulate XLSX/XLSB/CSV/OXML files.	MIT
expect-ct	0.1.1	A middleware to set the Expect-CT HTTP header for Content-Security-Policy.	MIT
express	4.21.2,5.1.0	Fast, unopinionated, minimalist web framework for Node.js.	MIT
express-handlebars	6.0.7	A Handlebars view engine for Express.	MIT
express-session	1.18.1	Simple session middleware for Express.	MIT
extract-zip	2.0.1	A Node.js module for extracting zip files.	MIT

HCL MyXalytics

form-data	2.5.5,4.0.4	A module for creating readable multipart/form-data streams.	MIT
generate-password	1.7.1	Generates secure and memorable random passwords.	MIT
geoip-country	4.2.247	Geolocation lookups for Node.js using MaxMind GeoLite2 data.	MIT
googleapis	114.0.0	Google APIs client library for Node.js.	Apache-2.0
ibm-cloud-sdk-core	5.4.3	Core library for all IBM Cloud Node.js SDKs.	Apache-2.0
ibm-cos-sdk	1.13.4,1.14.1	Node.js SDK for IBM Cloud Object Storage.	Apache-2.0
ibm-watson	10.0.0	IBM Watson Node.js SDK (superseded by per-service SDKs).	Apache-2.0
ibmcloud-appid	7.0.1	Node.js SDK for IBM Cloud App ID, an authentication service.	Apache-2.0
joi	17.13.3	A powerful schema description language and data validator for JavaScript.	BSD-3-Clause
json2csv	4.5.1	Converts JSON to CSV format.	MIT
jsontoxml	1.0.1	Converts JSON objects to XML format.	MIT
jsonwebtoken	9.0.0,9.0.2	An implementation of JSON Web Tokens for Node.js.	MIT
lusca	1.6.1	Security middleware for Express applications.	MIT
mammoth	1.11.0,1.9.0	Convert .docx documents to HTML.	BSD-2-Clause
markdown-it	12.3.2	Markdown parser implemented in JavaScript.	MIT
mime-types	2.1.35,3.0.1	A comprehensive library for getting MIME types from file extensions.	MIT
mobile-detect	1.4.3	A lightweight JavaScript library for detecting mobile devices.	MIT
module-alias	2.2.3	Creates aliases to require paths, enabling cleaner code structure.	MIT
moment	2.29.4,2.30.1	Parse, validate, manipulate, and display dates and times in JavaScript (now a legacy project).	MIT
mongoose	5.9.2,6.20.0	Official MongoDB Node.js driver.	Apache-2.0
morgan	1.10.1	HTTP request logger middleware for Node.js.	MIT
mssql	11.0.1	Microsoft SQL Server client for Node.js.	MIT
multer	2.0.2	Middleware for handling multipart/form-data, primarily for file uploads.	MIT
nocache	2.1.0,3.0.4	Middleware to set Cache-Control and related headers to prevent client-side caching.	MIT
node-wordnet	0.1.12	Access WordNet from Node.js.	MIT
nodemailer	7.0.9	A module for sending e-mails from Node.js applications.	LGPL-3.0-only
passport	0.6.0,0.7.0	Simple, unobtrusive authentication middleware for Node.js.	MIT
password-validator	4.1.1	A simple library to validate passwords against a list of rules.	MIT
pdf-parse	1.1.1	A module to extract text content from PDF files.	MIT
pg	8.16.3	A pure JavaScript PostgreSQL client for Node.js.	MIT
polly-tts	1.0.4	A Node.js module for Amazon Polly Text-to-Speech synthesis.	MIT
qrcode	1.5.4	Generates QR codes in various formats (canvas, SVG, terminal).	MIT
qs	6.13.0,6.14.0,6.5.3	A querystring parsing and stringifying library.	BSD-3-Clause
recursive-readdir	2.2.3	Recursively read a directory's contents.	MIT
redis	3.1.2	Node.js client for Redis.	MIT
slackify-html	1.0.1	Converts HTML to Slack-compatible message formatting.	MIT
slackify-markdown	4.5.0	Converts Markdown to Slack-compatible message formatting.	MIT

HCL MyXalytics

socket.io	4.8.1	Real-time bidirectional event-based communication library.	MIT
socket.io-client		The client-side library for Socket.IO.	MIT
speakeasy	2.0.0	Easy-to-use library for generating and validating TOTP (Time-based One-Time Password) tokens.	MIT
striptags	3.2.0	A Node.js module for stripping HTML tags from strings.	MIT
svg-captcha	1.4.0	Generates customizable SVG CAPTCHAs.	MIT
tesseract.js	6.0.1	Pure JavaScript OCR (Optical Character Recognition) using Tesseract.	Apache-2.0
twilio	4.21.0,5.10.3	The official Node.js helper library for the Twilio API.	MIT
uuid	10.0.0,11.1.0,3.4.0,8.0.0,8.3.2,9.0.1	A simple and fast library for generating UUIDs (Universally Unique Identifiers).	MIT
web-push	3.6.7	A library for sending push notifications using the Web Push Protocol.	MIT
wndb-with-exceptions	3.0.2	WordNet database files including exception rules.	MIT

6.3. AppScan Security Reports

6.3.1.SAST Report - Web Apps

No security vulnerabilities were found in the SAST Report, as detailed in the table below.

AppScan SAST WebApps	
■ Critical	0
■ High	0
■ Medium	0
■ Low	0
■ Informational	0
Total	0

6.3.2.SAST Report - Web API

No security vulnerabilities were found in the SAST Report, as detailed in the table below.

AppScan SAST WebAPI	
■ Critical	0
■ High	0

HCL MyXalytics

■ Medium	0
■ Low	0
■ Informational	0
Total	0

6.3.3.SAST Report - Integration module

No security vulnerabilities were found in the SAST Report, as detailed in the table below.

AppScan SAST Integration	
■ Critical	0
■ High	0
■ Medium	0
■ Low	0
■ Informational	0
Total	0

6.3.4.SAST Report - AI/ML Toolkit

No critical, high vulnerabilities were found in the SAST Report.

AppScan SAST AI/ML Toolkit	
■ Critical	0
■ High	0
■ Medium	0
■ Low	0
■ Informational	0
Total	0

HCL MyXalytics

6.3.5.SAST Report -Gen-AI Component

No vulnerabilities were found in the SAST Report.

AppScan SAST Gen AI Component	
■ Critical	0
■ High	0
■ Medium	0
■ Low	0
■ Informational	0
Total	0

6.3.6.DAST Report

The DAST report shows no critical, high, security vulnerabilities.

AppScan DAST	
■ Critical	0
■ High	0
■ Medium	0
■ Low	0
■ Informational	0
Total	0

6.3.7.SCA Security Report – WebApps

No security vulnerabilities were found in the SCA Security Report, as detailed in the table below.

AppScan SCA Security Report Web Apps

HCL MyXalytics

■ Critical	0
■ High	0
■ Medium	0
■ Low	0
Total	0

6.3.8.SCA Security Report – WebAPI

No security vulnerabilities were found in the SCA Security Report, as detailed in the table below.

AppScan SCA Security Report Web API	
■ Critical	0
■ High	0
■ Medium	0
■ Low	0
Total	0

6.3.9.SCA Security Report – Integration

No security vulnerabilities were found in the SCA Security Report, as detailed in the table below.

AppScan SCA Security Report Integration	
■ Critical	0
■ High	0
■ Medium	0
■ Low	0
Total	0

6.3.10. SCA Security Report – AI/ML Toolkit

No critical, high vulnerabilities were found in the SCA Security Report, as detailed in the table below.

AppScan SCA Security Report AI/ML Toolkit	
■ Critical	0
■ High	3
■ Medium	2
■ Low	0
Total	5

6.3.11. SCA Security Report – Gen-AI

No security vulnerabilities were found in the SCA Security Report, as detailed in the table below.

AppScan SCA Security Report Gen-AI Component	
■ Critical	0
■ High	0
■ Medium	0
■ Low	0
Total	0

6.4. Security Penetration Testing Reports

For Current release HCLSW Security Team conducted Penetration Testing for all the components of HCL MyXalytics based on OWASP Top 10 guideline for Web and Gen AI.

All security vulnerabilities were remediated and validated before the release by the HCLSW Security team with no Critical or High vulnerabilities remaining, as detailed in the table below.

HCL MyXalytics

6.4.1. Penetration Testing Internal

No vulnerabilities were found in the HCLsoftware security pen testing, as detailed in the table below.

Pen Testing Report Internal	
■ Critical	0
■ High	0
■ Medium	0
■ Low	0
Total	0

6.4.2. Penetration Testing External

No critical, high, medium vulnerabilities were found in the external penetration testing, as detailed in the table below.

Pen Testing Report External	
■ Critical	0
■ High	0
■ Medium	0
■ Low	3
Total	3

6.4.3. PSIRT Details

As part of HCL Software Product Security Incident Response (PSIRT) process , for current release following PSIRT records were created for security issues. Following is the description of PSIRT IDs:

Tool	Issue id	Source	Description	Status
MyXalytics	PRB0158067 (Low Severity)	Pen Testing- External	(CVE-2025-52651) - Improper Input Validation.	Open
MyXalytics	PRB0158068 (Low Severity)	Pen Testing- External	(CVE-2025-52652): Content Spoofing.	Open

HCL MyXalytics

MyXalytics	PRB0158079 (Low Severity)	Pen Testing- External	(CVE-2025-52657): Potential DOS.	Open
MyXalytics	PRB0161148 (Low Severity)	SDR	(CVE-2025-59871): Insecure Design vulnerability identified in the HCL MyXalytics Product	Open
AI/ML Toolkit	PRB0169577 (Medium severity)	MEND	(CVE-2025-71176) pytest-9.0.2-py3-none-any. whl	Open
AI/ML Toolkit	PRB0169580 (High Severity)	MEND	(CVE-2026-28500 0) onnx-1.20.1-cp311-cp311- manylinux_2_27_x86_64.m anylinux_2_28_x86_64.whl	Open
AI/ML Toolkit	PRB0169581 (High Severity)	MEND	(CVE-2026-33231) nltk-3.9.3-py3-none-any.whl	Open
AI/ML Toolkit	PRB0169582 (Medium Severity)	MEND	(CVE-2024-28219) pillow-10.2.0-cp311-cp311- manylinux_2_28_x86_64.w hl	Open
AI/ML Toolkit	PRB0169583 (High Severity)	MEND	(CVE-2025-15031) mlflow-3.10.1-py3-noneany. whl	Open
AI/ML Toolkit	PRB0169584 (Medium Severity)	MEND	(CVE-2026-33230) nltk-3.9.3-py3-none-any.whl	Open

7. Checklists

7.1. Data Security Checklist

Questions Response	
Is the application compliant with HCLTech's data classification and data privacy policies and procedures?	Yes
<p>List the type and nature of data that will be stored and processed by this application.</p> <p>a. Does the application support data masking, pseudonymization and anonymization techniques?</p> <p>b. Are data downloads/transfers to unmanaged devices, removable storage or personal</p>	<p>Type of data:</p> <ol style="list-style-type: none"> Integrations data based on the customer environment (ITSM, System Performance, Network Performance etc) User Id User Name <p>Nature of Data:</p> <ol style="list-style-type: none"> Project Data

HCL MyXalytics

devices restricted based on user roles?	<p>2. Customer Data</p> <p>a. Anonymization is supported</p> <p>b. Application will be hosted on client specific environment and accordingly restrictions are being managed through customer network and policies.</p>
Are all security policies, procedures and guidelines implemented and updated to protect CIA (Confidentiality, Integrity, and Availability)?	Client specific security policies, procedures and guidelines can be incorporated as the product is hosted in the customer environment.
What is the retention of the data created/used by AI (0-1 years; 1-3 years; 3-5 years; 5+ years)?	Data retention period is configurable and can be implemented as per delivery/customer ask with the help of PS team.

7.2. Authentication and Access Control Checklist

Questions Response	
<p>List the authentication mechanism implemented in the application.</p> <p>a. Does HCL MyXalytics support SSO and MFA with Microsoft/Azure AD/Active Directory?</p> <p>b. Does HCL MyXalytics support IAM solutions for user management?</p> <p>c. Describe process to manage/monitor access for users/admins at tenant level.</p> <p>d. Describe the process for user reconciliation in the application.</p>	<p>a. The application supports LDAP , SSO. application supports ADFS, Ping Identity and OKTA.</p> <p>b. Application has its own mechanism to support IAM</p> <p>c. Application has its own RBAC mechanism to manage users/admin at tenant level.</p> <p>d. Application onboards and deboards the users as per the user management process defined in customers environment.</p>
<p>Application Access Methods:</p> <p>a. Can the application be accessed over the web (internet)? Describe login security measures.</p> <p>b. Is access available via the HCL intranet or VPN?</p> <p>c. Is any type of device binding implemented?</p> <p>d. Is there a mobile application?</p>	<p>a. Yes.</p> <p>b. Yes</p> <p>c. Not Applicable</p> <p>d. Not Applicable</p>

HCL MyXalytics

<p>Access to Data Storage - There should be no direct access to confidential/sensitive data from the backend for unauthorized users.</p>	<p>a) All the sensitive information is kept encrypted. b) Access to database is only available to DBAs and PS admins</p>
<p>Encryption of data in transit and data at rest should comply with best security and industry standards such as NIST, ISO27001. E.g., SSL / TLS 1.3 above for data in transit; AES-256 bit for data at rest.</p>	<p>SSL certificates are used to encrypt data in transit. (TLS 1.3 is used). Data at rest is stored in a database and secured through encrypt decrypt mechanisms using the AES-256-GCM algorithm.</p>

7.3. Application Security Checklist

Control	Description
<p>Data at rest and in transit encryption</p>	<ul style="list-style-type: none"> • SSL certificates are used to encrypt data in transit. (TLS 1.3 is used). • Data at rest is secured through encrypt decrypt mechanisms. Application using the AES-256-GCM algorithm for encryption-decryption.
<p>Authentication & Authorization</p>	<ul style="list-style-type: none"> • The application provides comprehensive authentication support through LDAP integration, and Single Sign-On (SSO) capabilities. It seamlessly integrates with enterprise identity providers including ADFS, Ping Identity, and Okta. • Application has its own RBAC mechanism to manage users/admin at tenant level.
<p>Content Filtering & Prompt Validation (using Azure and GCP native content filtering service)</p>	<ul style="list-style-type: none"> • Real-Time Content Filtering: Built-in content moderation checks for toxic, harmful, or restricted content using classifiers and guardrails before generating output. • Prompt Injection Protection: Input sanitization and pattern recognition techniques are used to detect and neutralize prompt injection attempts. • Output Filtering: Sensitive terms, data leakage, or prohibited topics are blocked before reaching the user.

HCL MyXalytics

7.4. Non-Functional Testing Coverage Details

7.4.1. Load Testing

Objective:

Evaluate HCL MyXalytics performance on concurrent and simultaneous user requests under both normal and peak load conditions.

Procedure:

Load tests were conducted by simulating concurrent and simultaneous user requests with varying ramp-up time. The test scenarios were selected to cover a broad range of system functions, including login, search, data retrieval, batch processing use cases, and result status checks. For each scenario, key performance metrics such as error/failure rate (e.g., 0% or >0%) and average response time were recorded to identify potential bottlenecks and capacity limits.

Outcome:

Note:

Concurrent users – All users start sending requests at the same time.

Simultaneous users – A predefined ramp-up time is used to reach the target number of users gradually.

Module	Results
AIOPS Summary	250 simultaneous users → 1.907 sec average response time
CXO_DigitalCockpit	250 simultaneous users → 1.689 sec average response time
CXO_ExecutiveSummary	250 simultaneous users → 1.68 sec average response time
CXO_TrustedAdvisory	250 simultaneous users → 1.638 sec average response time
CXO_Value	250 simultaneous users → 1.533 sec average response time
ExecutiveDashboard	250 simultaneous users → 1.94 sec average response time

HCL MyXalytics

Sign-Up to the Application	250 simultaneous users → 1.463 sec average response time
Super Admin Approval for User and Login.	250 simultaneous users → 2.098 sec average response time
Login	250 simultaneous users → 1.789 sec average response time
Home dashboards.	250 simultaneous users → 1.373 sec average response time
CostAnalysisSummary	250 simultaneous users → 1.857 sec average response time
Cost Analysis_SpendAnalysis-Widgets	250 simultaneous users → 833.4 milli sec average response time
Cost Optimization_Summary-Widgets.	250 simultaneous users → 2.070 sec average response time
Cost Optimization AWS Saving Plan Recommendation-Widgets.	250 simultaneous users → 1.463 sec average response time
CloudGovernance_AWSInventory-Widgets	250 simultaneous users → 2.238 sec average response time
CloudGovernance_AzureInventory-Widgets	250 simultaneous users → 1.676 sec average response time
CloudGovernance_AzureSecurity&Compliance_SecurityCenterSummary	250 simultaneous users → 1.490 sec average response time
Cost Optimization-Application_Summary-Widgets	250 simultaneous users → 1.737 sec average response time
Cost Optimization-Application_Right Sizing-Widgets	250 simultaneous users → 2.249 sec average response time
DWP SD LeadSummary Dashboard	250 simultaneous users → 755.5 millisec average response time
DWP WPE LeadSummary Dashboard	250 simultaneous users → 1.178 sec average response time
DWP FSO LeadSummary Dashboard	250 simultaneous users → 1.201 sec average response time
DWP Problem Analytics Dashboard	250 simultaneous users → 1.712 sec average response time
DWP Operations Dashboard	250 simultaneous users → 1.713 sec average response time
Hybrid Cloud Operations Dashboard	250 simultaneous users → 2.173 sec average response time
Hybrid Cloud AppOperations Dashboard	250 simultaneous users → 2.194 sec average response time
Hybrid Cloud Ops Efficiency Dashboard	250 simultaneous users → 1.503 sec average response time

HCL MyXalytics

Hybrid Cloud AssetLandscape Dashboard	250 simultaneous users →922.5 millisec average response time
Hybrid Cloud TopTalkers Dashboard	250 simultaneous users →1.233 sec average response time
Hybrid Cloud Full Stack Observability	250 simultaneous users →1.466 sec average response time
Hybrid Cloud TrustedAdvisor	250 simultaneous users →2.177 sec average response time
Hybrid Cloud ExecutiveSummary	250 simultaneous users →2.766 sec average response time
Hybrid Cloud Platform Health & Drift	250 simultaneous users →2.263 sec average response time
Hybrid Cloud Capacity & Performance	250 simultaneous users →1.433 sec average response time
Cost Optimization Settings(Right Sizing Volume)	250 simultaneous users → 3.547 sec average response time
Geo Health	250 simultaneous users → 1.272 sec average response time
Practitioner Advisory - user	250 simultaneous users → 4.759 sec average response time
Verify Alert Rule Page	250 simultaneous users → 5.120 sec average response time
Verify Alert Dashboard	250 simultaneous users → 5.241 sec average response time
Add Tag Values	250 simultaneous users → 1.852 sec average response time
Verify Define Tag Policy Configuration	250 simultaneous users → 6.866 sec average response time
Verify Define Virtual Tag	250 simultaneous users → 1.723 sec average response time
Cloud Compliance Rule Entity Setup	250 simultaneous users → 3.157 sec average response time
Cloud Compliance Rule Engine	250 simultaneous users → 7.016 sec average response time
Enable Compliance Checks	250 simultaneous users → 6.345 sec average response time
Cloud Resource Recommendation	250 simultaneous users → 11.11 sec average response time

HCL MyXalytics

Recommendation Approval	250 simultaneous users → 13.51 sec average response time
AEX Chat	250 simultaneous users → 10.12 sec average response time
Saving Plan	250 simultaneous users → 8.691 sec average response time
Cache Manager Console	250 simultaneous users → 1.096 sec average response time

7.4.2. Upgradability testing

Objective:

Ensure that the HCL MyXalytics upgrade process completes successfully without any loss of user data.

Procedure:

- Perform an upgrade of HCL MyXalytics from version 6.7 to 6.8
- Verify that all user data, including settings and configurations, remains intact.

Outcome:

After upgrading from v6.7 to v6.8, all previously uploaded data, settings, and executed use cases were successfully retained in the updated version.

8. Existing Issues

The v6.8 release of HCL MyXalytics has the following issues categorized by severity:

- Critical Severity: 0 Issues
- High Severity: 0 Issues
- Medium Severity: 1 Issues
- Low Severity: 0 Issues

Issue ID	Issue Description
18464	For Azure/AWS/GCP Idle/Scheduling/Rightsizing remediation with ServiceNow, ticket details are not shown in UI even though ticket details are captured in alerting_log_BC01. RCA: The UI is not fetching or mapping ticket details correctly from the alerting_log_BC01 table due to a missing/failed join or API response issue.

HCL MyXalytics

	As a result, even though tickets are logged at the backend, they are not rendered in the UI due to data sync/mapping failure
--	--

9. Looking Forward

The upcoming release of HCL MyXalytics will focus on strengthening enterprise integrations, enhancing observability, and enabling persona-driven experiences. The platform will introduce Azure Entra and Active Directory integrations to provide deeper visibility into account access, inventory, and group structures. Observability will be expanded through integrations with job monitoring tools for ASM persona, iControl for business observability, and SolarWinds (including NetFlow and configuration change tracking). Additional integrations with Network OEMs will enable insights into patching status and vulnerabilities, complemented by network metric scorecards, new reporting use cases, and integrations with backup solutions such as Commvault and Rubrik.

On the FinOps and platform front, the release will enable FOCUS-specification based auto-onboarding of FinOps accounts, integration with the BigFix billing module, and introduce performance and billing data archival to support long-term reporting without impacting system performance. The platform will also allow runtime onboarding of data sources for flexible reporting and enable one-click onboarding for ITSM tools like ServiceNow, Jira, and Cherwell. Additionally, new personas including Autonomics, Network, and DBS/ASM will be introduced, along with new visualizations tailored for these personas.



HCL MyXalytics

About

HCL MyXalytics, a unified reporting and dashboarding product, provides a simplified bird's eye view of operations by converting data from multiple enterprise tools into intuitive and insightful reports. Its cutting-edge capabilities ensure end-to-end integration, expedited publication of reports, and predictive analytics for ITSM data, helping you make quick and correct decisions.

MyXalytics also offers intelligent insights that helps effectively visualize, manage, and optimize multi-cloud spends, improve governance, and strengthen the multi-cloud security posture with a dedicated module, MyXalytics FinOps.

Support

For any queries/clarifications, please reach out to [Support](#).



HCLSoftware

[hcl-software.com](https://www.hcl-software.com)