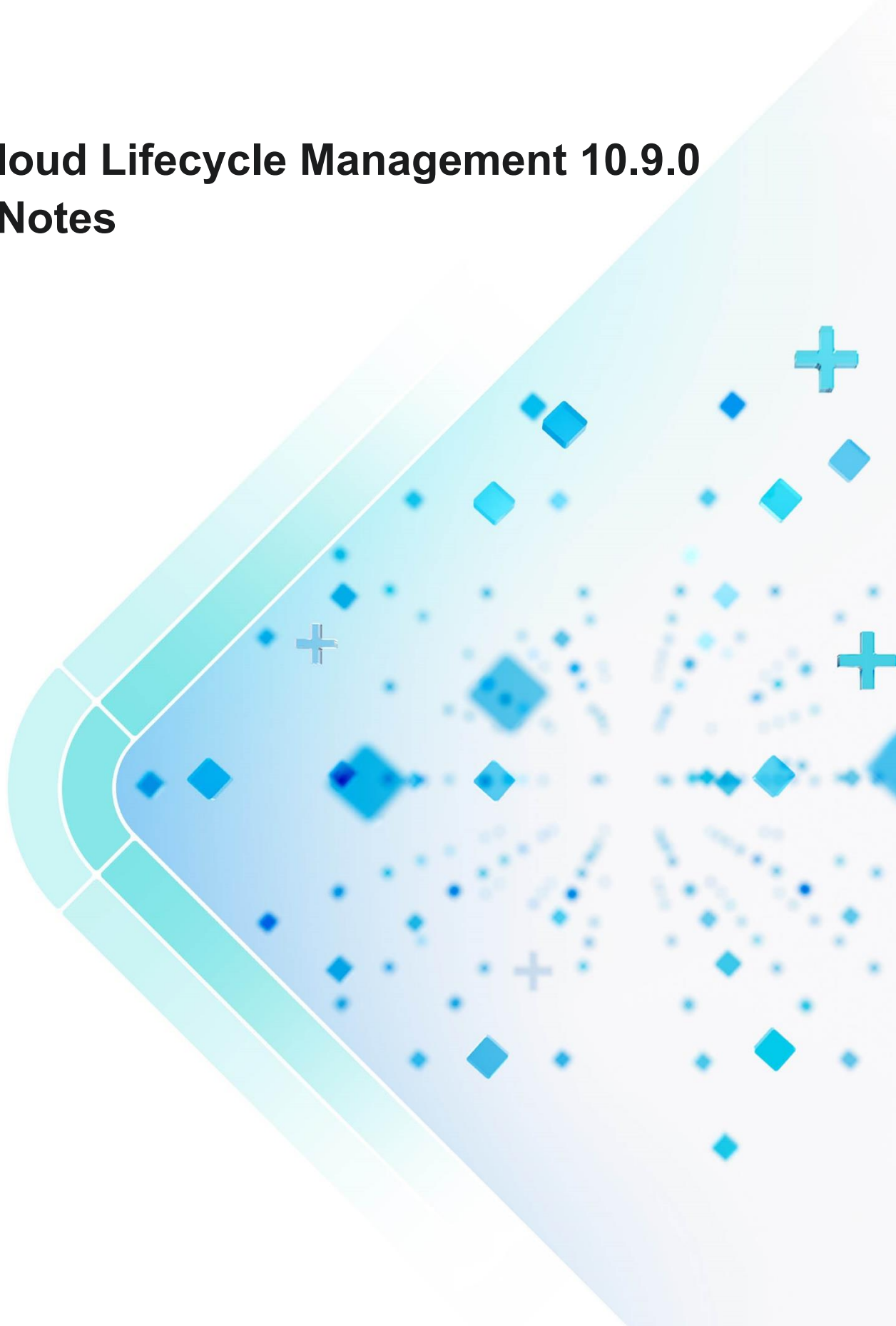


# HCLSoftware

## BigFix Cloud Lifecycle Management 10.9.0 Release Notes



The data contained in this document shall not be duplicated, used, or disclosed in whole or in part for any purpose. If a contract is awarded to chosen parties because of or in connection with the submission of this data, the client or prospective client shall have the right to duplicate, use, or disclose this data to the extent provided in the contract. This restriction does not limit the client's or prospective client's right to use the information contained in the data if it is obtained from another source without restriction. The data subject to this restriction is contained in all marked sheets. HCL has more than 200 offices worldwide. Addresses, phone numbers, and fax numbers are listed on the HCL website at [www.hcltechsw.com](http://www.hcltechsw.com).

Copyright © 2025 HCLTech. All rights reserved.

# Table of Contents

<b>BigFix Cloud Lifecycle Management 10.9.0 Release Notes</b>	<b>1</b>
1. Preface	5
2. Key Features and Enhancements	5
2.1 UI/UX Modernization and Architectural Overhaul	5
2.2 Core Integration Enhancements	7
3. Bug Fixes	8



# List of Tables

Table 1 - Conventions

## Document Revision History

Version No.	Version Date
Version 1.0	03-Jul-2025

# 1. Preface

## 1.1 About this Guide

This document provides comprehensive information regarding the new features, significant enhancements, and key bug fixes introduced in **BigFix Cloud Lifecycle Management version 10.9.0**.

## 1.2 Conventions

The following typographic conventions are used in this document to enhance readability and clarity:

Convention	Element
<b>Boldface</b>	Indicates graphical user interface elements associated with an action, or terms defined in text or the glossary.
Underlined blue	Indicates cross-references and external links.
<i>Italic</i>	Indicates document titles, occasional emphasis, or glossary terms.
Courier New	Indicates commands within a paragraph, URLs, code in examples, and paths including onscreen text and user input.
Numbered lists	Indicates steps in a procedure that must be followed in a specific sequence.
Bulleted lists	Indicates a list of items that does not necessarily require a specific sequence.

# 2. Key Features and Enhancements

This release marks a significant milestone, introducing complete UI/UX modernization and major architectural upgrades.

## 2.1 UI/UX Modernization and Architectural Overhaul

**BigFix Cloud Lifecycle Management** has undergone a comprehensive user interface and user experience revamp, transitioning to a new, API-driven **.NET Core** architecture for enhanced performance, scalability, and usability. Changes includes below major enhancements:

### **1. Modernized User Interface**

A refreshed, intuitive look has been applied across web portal, providing a consistent and seamless experience:

- **Material Design Integration-** The user interface has been revamped using Material Design principles, offering a cleaner, more modern, and intuitive look and feel.
- **UI Theme Selection** - Users can now personalize their experience by choosing light and dark UI themes.
- **Font Customization** - A new font selection feature allows users to choose their preferred typography for improved readability and comfort.

### **2. Day zero journey for new provider users**

A guided "Day Zero Journey" has been introduced to help new provider users seamlessly get started and quickly publish their service catalog. This walkthrough highlights the essential initial steps, including:

- Setting up an organization
- Configuring Cloud Setup
- Managing Users
- Allocating Resources
- Creating a Catalog

### **3. Redesigned UI Form Designer**

The Form Designer has been enhanced to improve flexibility and usability when creating forms. Key improvements include:

- **Flexible Layout Options** – Choose between a two-column or three-column layout, with dedicated space to display field descriptions clearly and concisely.
- **Group Panel Control** – Introduced a new grouping capability that allows related form controls to be organized into visual panels, improving clarity and structure in complex forms.

### **4. Redesigned Canvas-Based Workflow Designer**

The Workflow Designer has been completely redesigned with a modern, canvas-based interface. This new design provides an intuitive drag-and-drop experience, allowing users to visually build, connect, and manage workflow steps with greater clarity and precision.

### **5. Intuitive Requester Experience**

Significant usability improvements have been made to streamline how users interact with the service catalog:

- **Scroll-Based Pagination** – Replaced traditional click-based pagination with infinite scroll to provide a smoother browsing experience and reduce unnecessary clicks.
- **Most-Used Services Highlighted** – Frequently accessed service catalog items are now

visually highlighted, helping users quickly locate and request commonly used services.

## 6. Improved Navigation

The application menu has been reorganized to improve navigation and user experience

## 2.2 Rebranding to BigFix Cloud Lifecycle Management

The product has been rebranded from MyCloud to BigFix Cloud Lifecycle Management. With rebranding all related documentation, UX, Installer, new database has been changed.

## 2.3 Architectural Enhancement

- **.NET Core Migration:** The entire UI/UX, encompassing approximately 260 distinct screens, has been migrated from the legacy .NET framework to the modern **.NET Core** framework.
- **API-Driven Front-End:** The new UI operates on an **API-first approach**, with over **300 new APIs** written and developed to support its functionality. This foundational change ensures enhanced performance, scalability, and maintainability.

## 2.4 Orchestrator, Sync, and Performance Enhancement

This release introduces a major upgrade to BigFix CLM's VMware integration, transitioning from outdated SDKs to modern SOAP APIs. These enhancements deliver improved performance, increased reliability, and expanded functionality.

- **Complete SDK Replacement**  
The legacy VIM SDK has been fully replaced with API calls across all VMware operations. Below components have been modified.
  - **Sync Component** – More reliable synchronization of VMware resources.
  - **Performance Data Collection** – Stronger and more efficient metrics collection for better monitoring.
  - **Provisioning Operations** – Streamlined and dependable VM and storage provisioning using SOAP APIs.
  - **VM Customization** – New support for customizing existing virtual machines via API.
  - **Extended Object Syncing** – Ability to sync new object types, including content templates and OS profile jobs.

## 2.5 Other Key Enhancements

- **SAML Integration for VMware Workspace ONE:**

- Enabled SAML (Security Assertion Markup Language) integration with VMware Workspace ONE for streamlined authentication and configuration.
  - Includes SAML redirection functionality to ensure users are redirected to their originally requested service catalog after successful authentication.
- **Expanded Expected Cost Calculation:**
  - The "Expected Cost Calculation" functionality is now available on the request page for services and resources provisioned on **Cisco** and **AWS** platforms, providing users with clearer cost visibility.
- **Enhancement in AD sync component to fetch users from nested groups**



# **HCLSoftware**

[hcl-software.com](https://hcl-software.com)