

The background is a solid blue color with a geometric pattern of overlapping triangles in various shades of blue, creating a modern and abstract design.

# **BigFix**

## **Extended third-party Mac Applications - User's Guide**

## Special notice

Before using this information and the product it supports, read the information in [Notices](#).

## Edition notice

This edition applies to BigFix version 11 and to all subsequent releases and modifications until otherwise indicated in new editions.

# Contents

Special notice.....	ii
Edition notice.....	iii
<b>Chapter 1. Overview and Getting started.....</b>	<b>5</b>
<b>Chapter 2. Enabling Updates for Mac Applications Extended site.....</b>	<b>6</b>
<b>Chapter 3. Navigating to Updates for Mac Applications Extended in the BigFix console.....</b>	<b>8</b>
<b>Chapter 4. Supported applications .....</b>	<b>9</b>
<b>Appendix A. Support.....</b>	<b>10</b>
Notices.....	xi

# Chapter 1. Overview and Getting started

This section will help you to quickly cover the essential steps to start automating your software package workflows with **Updates for Mac Applications Extended**.

**The main objectives of Updates for Mac Applications Extended are as follows:**

- Regularly provide updates for an extensive range of third-party software packages, ensuring they are frequently refreshed to include the latest vendor releases.
- Streamline the package updating process to reduce manual intervention, minimize human error, and increase update frequency through automation
- Implement consistent tools and workflows for integrating new applications, enabling scalability, and the expansion of the software library.
- Ensure new content adheres to standards and includes validated metadata through automated checks.

## **BigFix Content Sites: Delivering Reliable Third-Party Software Updates**

We deliver a set of BigFix Content Sites that cover patches and upgrades for a wide range of third-party software. These sites are updated frequently to ensure they reflect the latest vendor releases, helping customers maintain up-to-date systems effortlessly. Refer to the [List of software updates and releases](#).



**Note:**

To manually cache the files, refer to the [Manual caching](#).

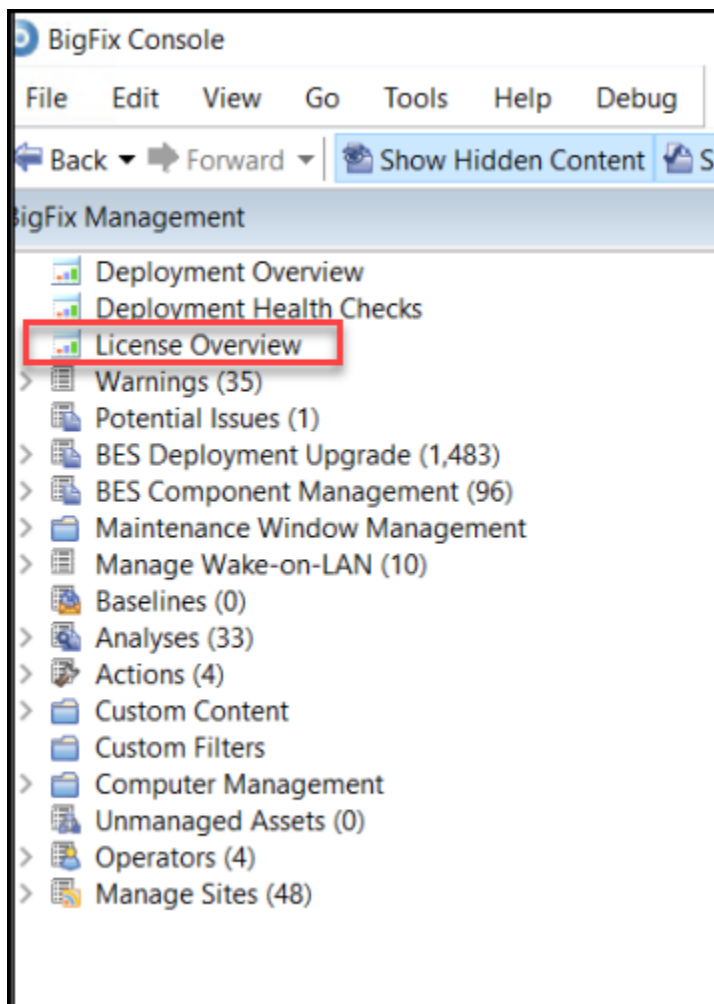
## Chapter 2. Enabling Updates for Mac Applications Extended site

Enabling **Updates for Mac Applications Extended** site ensures that users receive the latest features, bug fixes, and security improvements for their installed apps.

You must have access to **Updates for Mac Applications Extended** domain in the BigFix console.

Perform the following steps to enable **Updates for Mac Applications Extended** in the BigFix console:

1. From the **BigFix Management** domain, click **License Overview** dashboard.



2. Navigate to the site lists and click **Updates for Mac Applications Extended** on the **License Overview** dashboard.

The screenshot shows the BigFix Console interface. On the left, the 'BigFix Management' sidebar has a tree view where 'License Overview' is selected. The main area is titled 'BigFix License Overview' and contains a table with the following data:

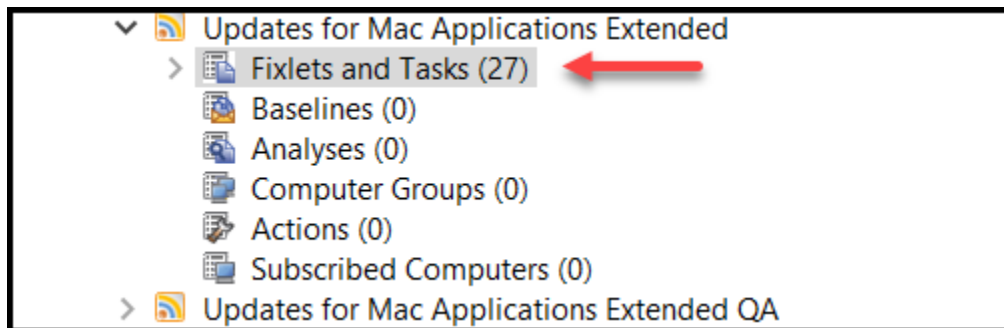
OVERVIEW	ALL SITES	BIGFIX MOBILE	COMPLIANCE	INVENTORY	LIFECYCLE	PC
ENABLED	<a href="#">Patches for HP-UX</a>		0			
ENABLED	<a href="#">Patches for Mac OS X</a>		0			
ENABLED	<a href="#">Patches for Oracle Linux 8</a>		0			
ENABLED	<a href="#">Patches for Oracle Linux 9</a>		0			
ENABLED	<a href="#">Patches for RHEL 7</a>		0			
ENABLED	<a href="#">Patches for RHEL 8</a>		0			
ENABLED	<a href="#">Patches for RHEL 9</a>		0			
ENABLED	<a href="#">Patches for Rocky Linux 8</a>		0			
ENABLED	<a href="#">Patches for Rocky Linux 9</a>		0			
ENABLED	<a href="#">Patches for Solaris</a>		0			
ENABLED	<a href="#">Patches for Solaris 11</a>		0			
ENABLED	<a href="#">Patches for Windows</a>		0			
ENABLED	<a href="#">Patching Support</a>		0			
ENABLED	<a href="#">Software Distribution</a>		3			
ENABLED	<a href="#">Updates for Mac Applications</a>		0			
ENABLED	<a href="#">Updates for Mac Applications Extended</a>		0			
ENABLED	<a href="#">Updates for Windows Applications</a>		0			
ENABLED	<a href="#">Updates for Windows Applications Extended</a>		0			
ENABLED	<a href="#">BES Asset Discovery</a>					

# Chapter 3. Navigating to Updates for Mac Applications Extended in the BigFix console

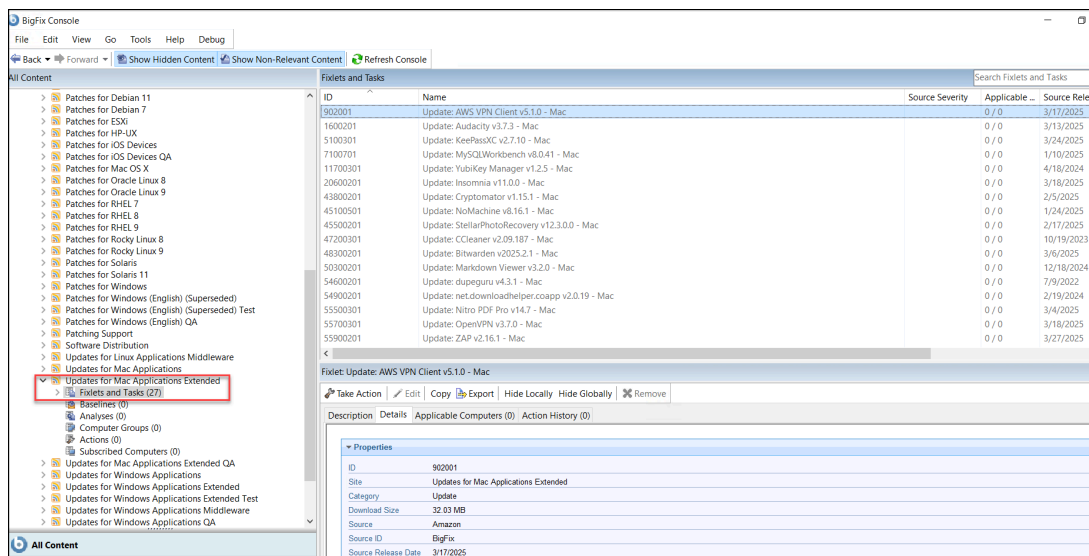
You can view Fixlets and Tasks that you can take action on.

To view the Fixlets and Tasks, click **License Overview > Sites > External Sites > Updates for Mac Applications Extended**.

Click **Fixlets and Tasks**.



Fixlets and Tasks page opens, and you can view Fixlets and Tasks that you can take action.





## Chapter 4. Supported applications

For an updated list of supported applications and current versions, see [Mac third-party Apps](#).

For details about the Extended third-party Windows Applications, refer to Extended third-party Windows Applications.

# Appendix A. Support

For more information about this product, see the following resources:

- [BigFix Support Portal](#)
- [BigFix Developer](#)
- [BigFix Playlist on YouTube](#)
- [BigFix Tech Advisors channel on YouTube](#)
- [BigFix Forum](#)

## Notices

This information was developed for products and services offered in the US.

HCL may not offer the products, services, or features discussed in this document in other countries. Consult your local HCL representative for information on the products and services currently available in your area. Any reference to an HCL product, program, or service is not intended to state or imply that only that HCL product, program, or service may be used. Any functionally equivalent product, program, or service that does not infringe any HCL intellectual property right may be used instead. However, it is the user's responsibility to evaluate and verify the operation of any non-HCL product, program, or service.

HCL may have patents or pending patent applications covering subject matter described in this document. The furnishing of this document does not grant you any license to these patents. You can send license inquiries, in writing, to:

*HCL*

*330 Potrero Ave.*

*Sunnyvale, CA 94085*

*USA*

*Attention: Office of the General Counsel*

For license inquiries regarding double-byte character set (DBCS) information, contact the HCL Intellectual Property Department in your country or send inquiries, in writing, to:

*HCL*

*330 Potrero Ave.*

*Sunnyvale, CA 94085*

*USA*

*Attention: Office of the General Counsel*

HCL TECHNOLOGIES LTD. PROVIDES THIS PUBLICATION "AS IS" WITHOUT WARRANTY OF ANY KIND, EITHER EXPRESS OR IMPLIED, INCLUDING, BUT NOT LIMITED TO, THE IMPLIED WARRANTIES OF NON-INFRINGEMENT, MERCHANTABILITY OR FITNESS FOR A PARTICULAR PURPOSE. Some jurisdictions do not allow disclaimer of express or implied warranties in certain transactions, therefore, this statement may not apply to you.

This information could include technical inaccuracies or typographical errors. Changes are periodically made to the information herein; these changes will be incorporated in new editions of the publication. HCL may make improvements and/or changes in the product(s) and/or the program(s) described in this publication at any time without notice.

Any references in this information to non-HCL websites are provided for convenience only and do not in any manner serve as an endorsement of those websites. The materials at those websites are not part of the materials for this HCL product and use of those websites is at your own risk.

HCL may use or distribute any of the information you provide in any way it believes appropriate without incurring any obligation to you.

Licensees of this program who wish to have information about it for the purpose of enabling: (i) the exchange of information between independently created programs and other programs (including this one) and (ii) the mutual use of the information which has been exchanged, should contact:

*HCL*

*330 Potrero Ave.*

*Sunnyvale, CA 94085*

*USA*

*Attention: Office of the General Counsel*

Such information may be available, subject to appropriate terms and conditions, including in some cases, payment of a fee.

The licensed program described in this document and all licensed material available for it are provided by HCL under terms of the HCL Customer Agreement, HCL International Program License Agreement or any equivalent agreement between us.

The performance data discussed herein is presented as derived under specific operating conditions. Actual results may vary.

Information concerning non-HCL products was obtained from the suppliers of those products, their published announcements or other publicly available sources. HCL has not tested those products and cannot confirm the accuracy of performance, compatibility or any other claims related to non-HCL products. Questions on the capabilities of non-HCL products should be addressed to the suppliers of those products.

Statements regarding HCL's future direction or intent are subject to change or withdrawal without notice, and represent goals and objectives only.

This information contains examples of data and reports used in daily business operations. To illustrate them as completely as possible, the examples include the names of individuals, companies, brands, and products. All of these names are fictitious and any similarity to actual people or business enterprises is entirely coincidental.

COPYRIGHT LICENSE:

This information contains sample application programs in source language, which illustrate programming techniques on various operating platforms. You may copy, modify, and distribute these sample programs in any form without payment to HCL, for the purposes of developing, using, marketing or distributing application programs conforming to the application programming interface for the operating platform for which the sample programs are written. These examples have not been thoroughly tested under all conditions. HCL, therefore, cannot guarantee or imply reliability, serviceability, or function of these programs. The sample programs are provided "AS IS," without warranty of any kind. HCL shall not be liable for any damages arising out of your use of the sample programs.

Each copy or any portion of these sample programs or any derivative work must include a copyright notice as follows:

© (your company name) (year).

Portions of this code are derived from HCL Ltd. Sample Programs.

## Trademarks

HCL Technologies Ltd. and HCL Technologies Ltd. logo, and hcl.com are trademarks or registered trademarks of HCL Technologies Ltd., registered in many jurisdictions worldwide.

Adobe, the Adobe logo, PostScript, and the PostScript logo are either registered trademarks or trademarks of Adobe Systems Incorporated in the United States, and/or other countries.

Java and all Java-based trademarks and logos are trademarks or registered trademarks of Oracle and/or its affiliates.

Microsoft, Windows, Windows NT, and the Windows logo are trademarks of Microsoft Corporation in the United States, other countries, or both.

Linux is a registered trademark of Linus Torvalds in the United States, other countries, or both.

UNIX is a registered trademark of The Open Group in the United States and other countries.

Other product and service names might be trademarks of HCL or other companies.

## Terms and conditions for product documentation

Permissions for the use of these publications are granted subject to the following terms and conditions.

### Applicability

These terms and conditions are in addition to any terms of use for the HCL website.

## **Personal use**

You may reproduce these publications for your personal, noncommercial use provided that all proprietary notices are preserved. You may not distribute, display or make derivative work of these publications, or any portion thereof, without the express consent of HCL.

## **Commercial use**

You may reproduce, distribute and display these publications solely within your enterprise provided that all proprietary notices are preserved. You may not make derivative works of these publications, or reproduce, distribute or display these publications or any portion thereof outside your enterprise, without the express consent of HCL.

## **Rights**

Except as expressly granted in this permission, no other permissions, licenses or rights are granted, either express or implied, to the publications or any information, data, software or other intellectual property contained therein.

HCL reserves the right to withdraw the permissions granted herein whenever, in its discretion, the use of the publications is detrimental to its interest or, as determined by HCL, the above instructions are not being properly followed.

You may not download, export or re-export this information except in full compliance with all applicable laws and regulations, including all United States export laws and regulations.

HCL MAKES NO GUARANTEE ABOUT THE CONTENT OF THESE PUBLICATIONS. THE PUBLICATIONS ARE PROVIDED "AS-IS" AND WITHOUT WARRANTY OF ANY KIND, EITHER EXPRESSED OR IMPLIED, INCLUDING BUT NOT LIMITED TO IMPLIED WARRANTIES OF MERCHANTABILITY, NON-INFRINGEMENT, AND FITNESS FOR A PARTICULAR PURPOSE.