



BigFix Lifecycle CVE Search Dashboard and Web Report

Special notice

Before using this information and the product it supports, read the information in [Notices](#).

Edition notice

This edition applies to BigFix version 11 and to all subsequent releases and modifications until otherwise indicated in new editions.

Contents

Chapter 1. Overview.....	5
Chapter 2. Enable CyberFOCUS Site.....	6
Chapter 3. CISA KEV (BOD 22-01) CVE list.....	9
Chapter 4. Relevant Fixlet Checkbox.....	10
Chapter 5. Superseded Fixlet Checkbox.....	11
Chapter 6. Migrating from Vulnerability Reporting site.....	12

Chapter 1. Overview

BigFix CVE Search dashboard and Web Report provide operators with ability to analyze vulnerabilities in their environment based on their CVE ID. For each CVE, operator can report on:

- BigFix Fixlet coverage for CVEs in question
- BigFix Server subscription to all the sites containing those Fixlets
- Total Fixlet count per CVE
- Total count of vulnerable instances found
- Additional CVE metadata (if applicable)

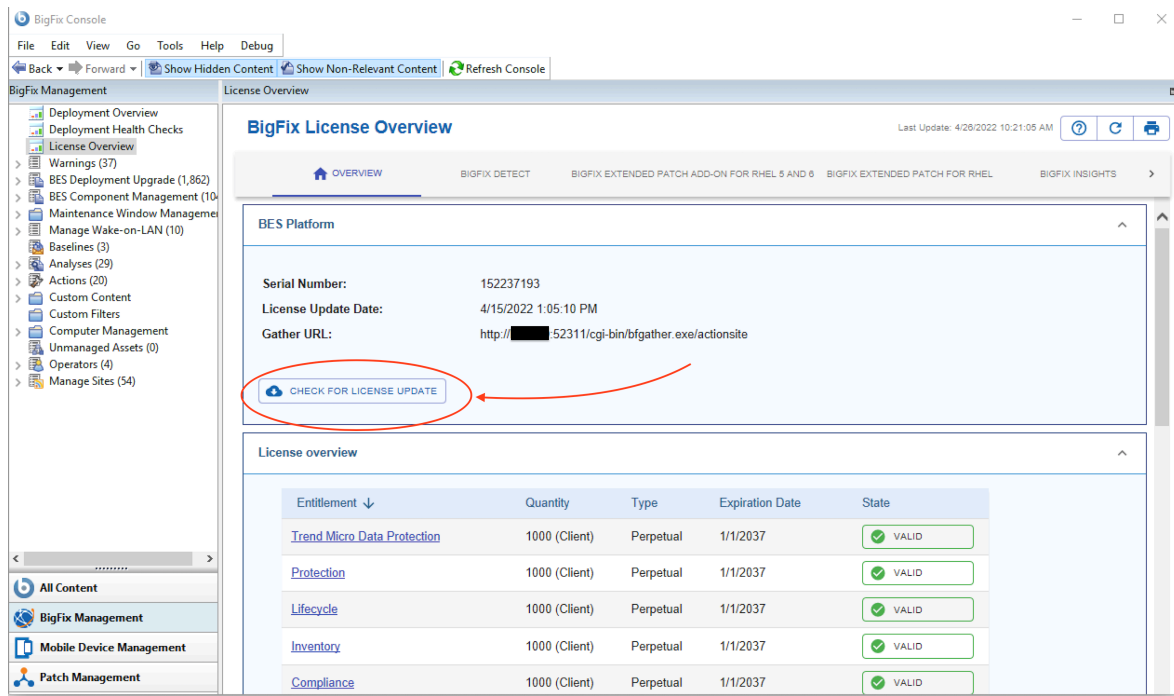
Dashboard provides additional ability to create remediation baselines for a subset of selected CVEs or Fixlets.

Chapter 2. Enable CyberFOCUS Site

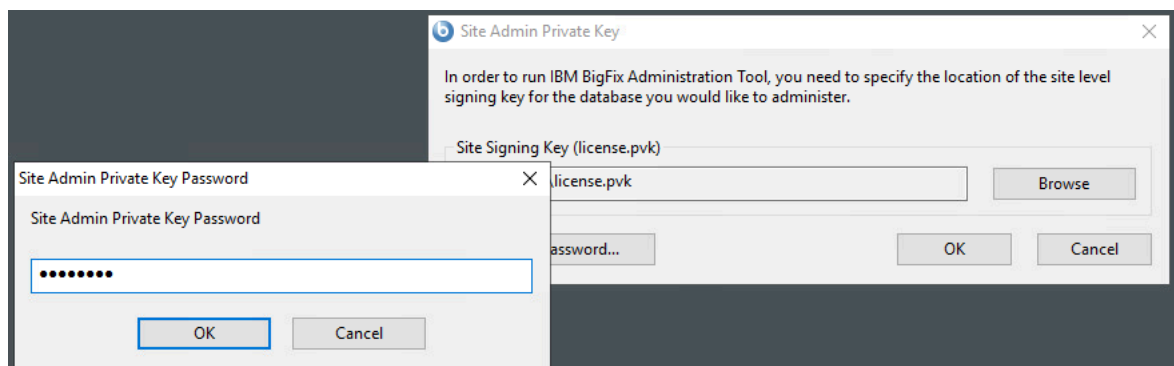
In the site list, find the site named CyberFOCUS. Click on the site and gather it.

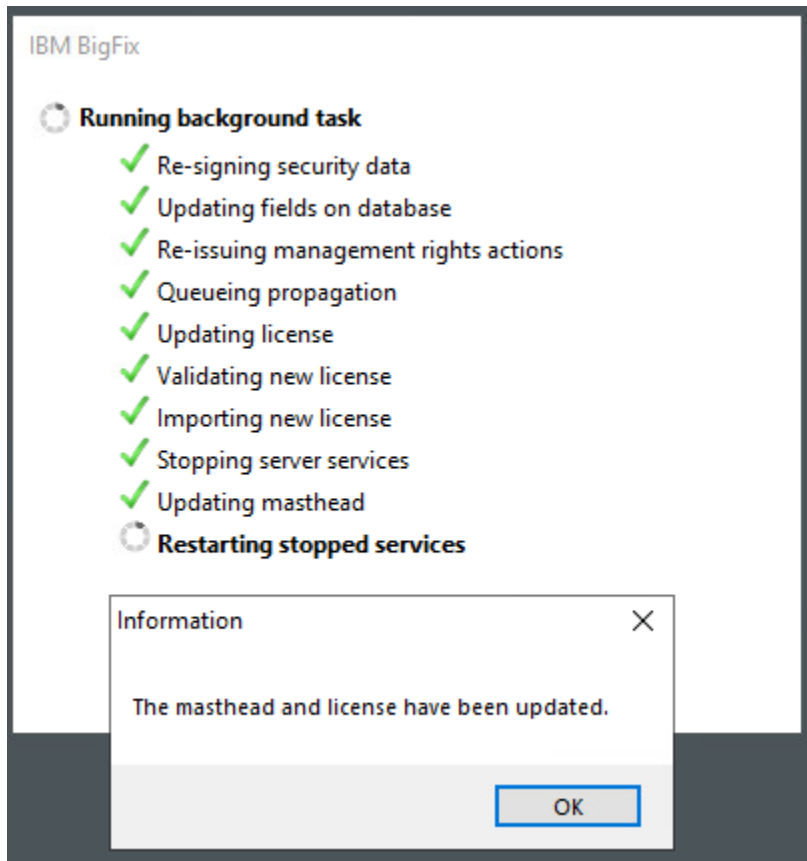
To find the CyberFOCUS site and gather it, complete the following steps.

1. In the BigFix Console, in the **BigFix Management Domain**, navigate to the **License Overview Dashboard**
2. Check if the **BES Platform** section notifies of any site certificate updates. If it does not, click **Check for license update**.



3. Update the masthead by using the BES Administration Tool. On the root server, go to **Start > Programs > HCL BigFix > HCL BigFix Administration Tool**. Enter the private key password for your deployment and click **OK**.





4. In the Licence Overview Dashboard, navigate to the **Lifecycle** or **Compliance** domain.
5. In the site list, find the site named **CyberFOCUS**. Click on the site and gather it.

BigFix License Overview

[←](#) [SU](#) [BIGFIX PATCH ADD-ON FOR WIN 7 ESU](#) [COMPLIANCE](#) [INVENTORY](#) [LIFECYCLE](#) [PROTECTION](#)

This license contains the following entitlements for Lifecycle

Licensed for:	1000 (Client)
License Type:	Perpetual
Expiration Date:	1/1/2037 ✓ VALID

Available Sites:

Enabled ↓	Sites	Subscribed Computers
ENABLE	Windows Defender App for BigFix	
ENABLE	carbonblackdefense	
ENABLE	ciscoamp	
ENABLE	cyberfocus	
ENABLE	paloaltonetworks	
ENABLE	webui-ivr	

Rows per page: 50 ▾ 101-106 of 106 |< < 3 ▾ > >|

Chapter 3. CISA KEV (BOD 22-01) CVE list

CVE Search dashboard and web report also provide latest information on Known Exploitable Vulnerability (KEV) List provided by the Cybersecurity & Infrastructure Security Agency (CISA) Binding Operational Directive 22-01 (BOD 22-01).

You can choose this list from the vulnerability list dropdown as shown in the following image:

Last Updated: 2022-04-18 04:08:45 PM

CVE Search

[CVE Results](#) [Fixlet Results](#)

Add Vulnerabilities List: [CISA KEV \(BOD 22-01\)](#)

Additional CVEs: [Add CVEs](#)

CVE Search List:

[CVE-2002-0367](#) [CVE-2004-0210](#) [CVE-2005-2773](#) [CVE-2006-1547](#) [CVE-2007-3010](#) [CVE-2008-2992](#)

[CVE-2008-3431](#) [CVE-2009-0927](#) [CVE-2009-1123](#) [CVE-2009-1151](#) [CVE-2009-2055](#) [CVE-2009-3129](#)

[CVE-2009-3960](#) [CVE-2010-0188](#) [CVE-2010-0232](#) [CVE-2010-1871](#) [CVE-2010-2861](#) [CVE-2010-3035](#)

[CVE-2010-3333](#) [CVE-2010-4344](#) [CVE-2010-4345](#) [CVE-2010-4398](#) [CVE-2010-5326](#) [CVE-2010-5330](#)

This list also contains metadata for CVEs as provided by the CISA and the National Vulnerability Database (NVD).

Exploitable CVEs: 4

☐ 0 CVEs Selected ☐ Show Relevant Only ☐ Include Superseded Fixlets

Search...

CVEs per Page: 80	81 - 160 of 634 CVEs	< 2 >	2 of 8 pages						
<input type="checkbox"/> CVE	CVSSv3 Score	Fixlets Available	Vendor Project	Product	Name	Due Date	Fixlet Count	Instances Found	
<input type="checkbox"/> CVE-2020-1350	10 (critical)	Partial Coverage	Microsoft	Windows	"SigRed" - Microsoft Windows Domain Name System (DNS) Server Remote Code Execution Vulnerability	2020-07-24	4	0	
<input type="checkbox"/> CVE-2017-0059	4.3 (medium)	Partial Coverage	Microsoft	Internet Explorer	Microsoft Internet Explorer Information Disclosure Vulnerability	2022-04-18	4	0	
<input type="checkbox"/> CVE-2016-0151	7.8 (high)	Partial Coverage	Microsoft	Client-Server Runtime Subsystem (CSRSS)	Microsoft Windows CSRSS Security Feature Bypass Vulnerability	2022-04-18	4	0	
<input type="checkbox"/> CVE-2016-0185	7.8 (high)	Partial Coverage	Microsoft	Windows	Microsoft Windows Media Center Remote Code Execution vulnerability	2022-05-03	4	0	
					Microsoft Vista/Office				

For more information on BOD 22-01, refer to the CISA website at <https://www.cisa.gov/binding-operational-directive-22-01>.

Chapter 4. Relevant Fixlet Checkbox

CVE Search dashboard and web report provide ability to include/exclude non-relevant Fixlets from view and calculations. To do this, uncheck/check the “Show Relevant Only” checkbox respectively.

Last Updated: 2022-04-13 05:28:53 PM

CVE Search

Search

CVE Results

Fixlet Results

[<< Modify CVEs](#)

Summary	
CVEs in Search:	634
CVEs with Fixlets:	283
Exploitable CVEs:	4

0 CVEs Selected

☒ Show Relevant Only☐ Include Superseded Fixlets

Search...

CVEs per Page: 10 ▾		1 - 4 of 4 CVEs		1 ▾				1 of 1 pages	
<input type="checkbox"/>	CVE ↑	CVSSv3 Score ↕	Fixlets Available ↕	Vendor Project ↕	Product ↕	Name ↕	Due Date ↕	Fixlet Count ↕	Instances Found ↕
<input type="checkbox"/>	CVE-2013-3900	(none)	Partial Coverage	Microsoft	WinVerifyTrust function	Microsoft WinVerifyTrust function Remote Code Execution	2022-07-10	20	1
<input type="checkbox"/>	CVE-2020-15999	6.5 (medium)	Partial Coverage	Google	Chrome	Google Chrome FreeType Memory Corruption	2021-11-17	8	2
<input type="checkbox"/>	CVE-2021-3156	7.8 (high)	Partial Coverage	Sudo	Sudo	Sudo Heap-Based Buffer Overflow Vulnerability	2022-04-27	4	0
<input type="checkbox"/>	CVE-2022-0847	9.8 (critical)	Partial Coverage	Microsoft	Windows	Microsoft Windows CLFS	2022-04-27	1	0

Chapter 5. Superseded Fixlet Checkbox

BigFix provides a unique view into patches that have been superseded by their vendor. By default, Fixlets for these patches get a relevance statement added to them to ensure that they will not evaluate as relevant on any system. However, a subset of these Fixlets can be evaluated using a “superseded evaluation” setting. Currently, this feature is supported for windows operating system patches.

CVE Search

[Search](#)

[CVE Results](#)

[Fixlet Results](#)

<< Modify CVEs

Create Content

Summary

CVEs in Search: 634

CVEs with Fixlets: 283

Exploitable CVEs: 4

0 CVEs Selected ☐ Show Relevant Only ☒ Include Superseded Fixlets ⚠

Search...

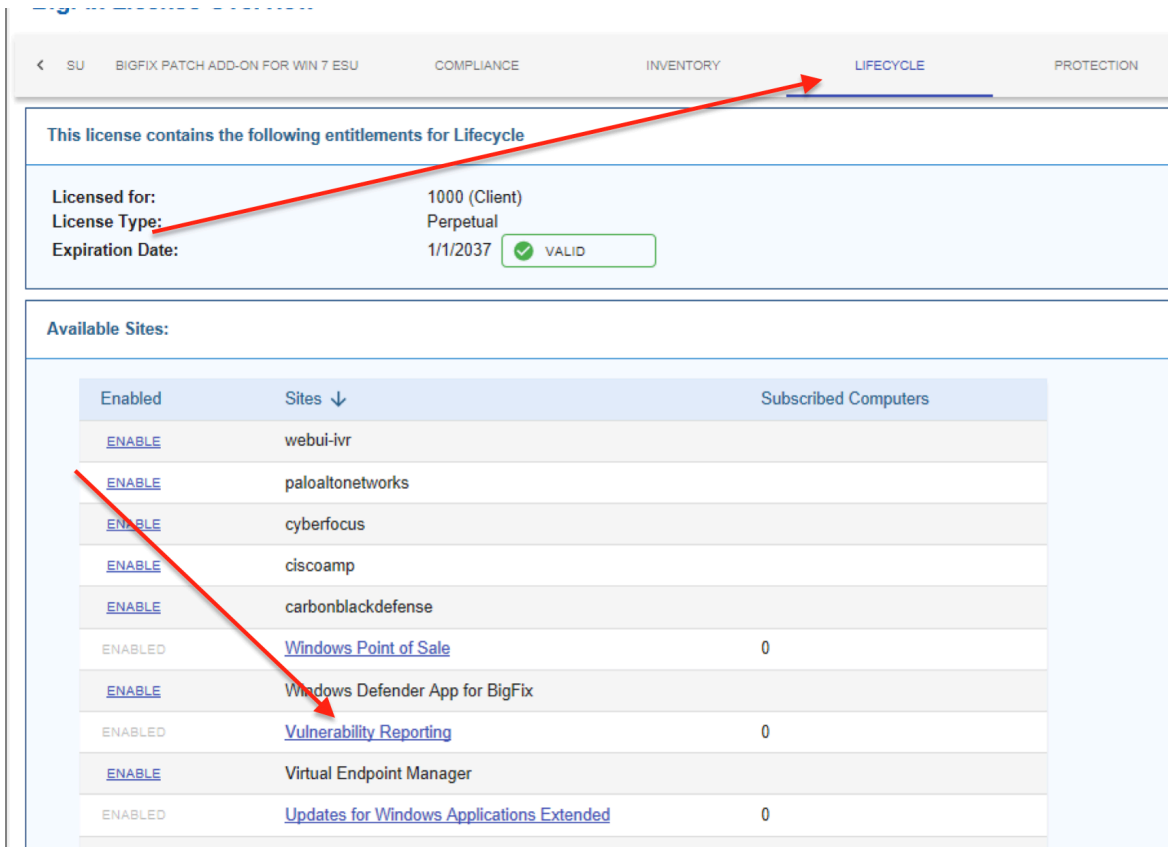
CVEs per Page: 10		1 - 10 of 634 CVEs		< 1 >		1 of 64 pages			
<input type="checkbox"/>	CVE ↑	CVSSv3 Score ↕	Fixlets Available ↕	Vendor Project ↕	Product ↕	Name ↕	Due Date ↕	Fixlet Count ↕	Instances Found ↕
<input type="checkbox"/>	CVE-2002-0367	(none)	Partial Coverage	Microsoft	Windows	Microsoft Windows Privilege Escalation Vulnerability	2022-03-24	6	0
<input type="checkbox"/>	CVE-2004-0210	(none)	Subscription Needed	Microsoft	Windows	Microsoft Windows Privilege Escalation Vulnerability	2022-03-24	0	0
<input type="checkbox"/>	CVE-2005-2773	(none)	No	Hewlett Packard (HP)	OpenView Network Node Manager	HP OpenView Network Node Manager Remote Code Execution Vulnerability	2022-04-15	0	0
<input type="checkbox"/>	CVE-2006-1547	(none)	No	Apache	Struts 1	Apache Struts 1 ActionForm Denial-of-Service Vulnerability	2022-07-21	0	0

Chapter 6. Migrating from Vulnerability Reporting site

CVE Search used to be published to the Vulnerability Reporting site that has since been deprecated. As of March 31st 2023, this site will no longer receive updates. To continue using CVE Search dashboard and Web Report, HCL recommends unsubscribing from the Vulnerability Reporting site and subscribing to the CyberFOCUS Site.

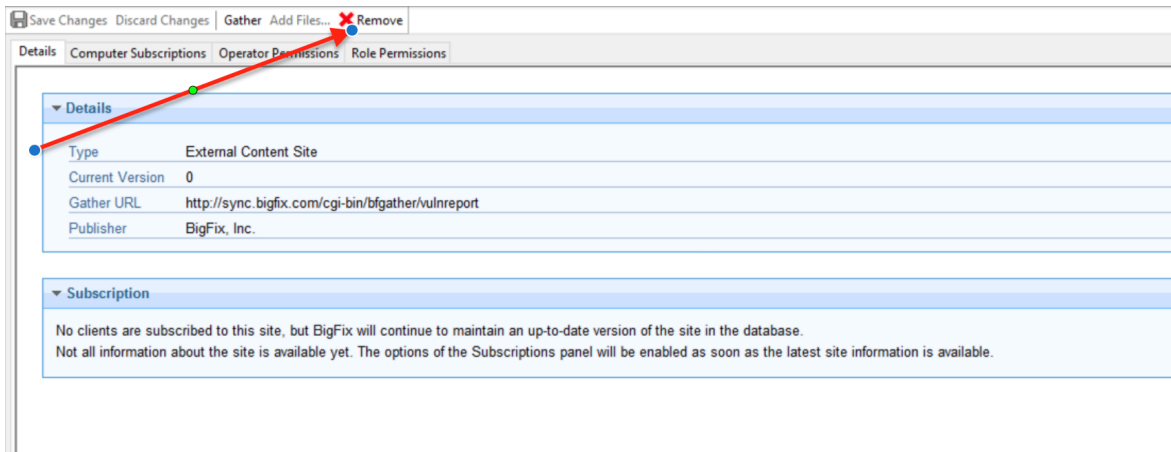
To unsubscribe from the Vulnerability Reporting site and subscribe to the CyberFOCUS site, complete the following steps.

1. In the BigFix Console, in the **BigFix Management Domain**, navigate to the **License Overview Dashboard**.
2. In the License Overview Dashboard, navigate to the **Lifecycle** or **Compliance** domain.
3. In the site list, find the site named Vulnerability Reporting. Click on the site name and then click on the remove button.

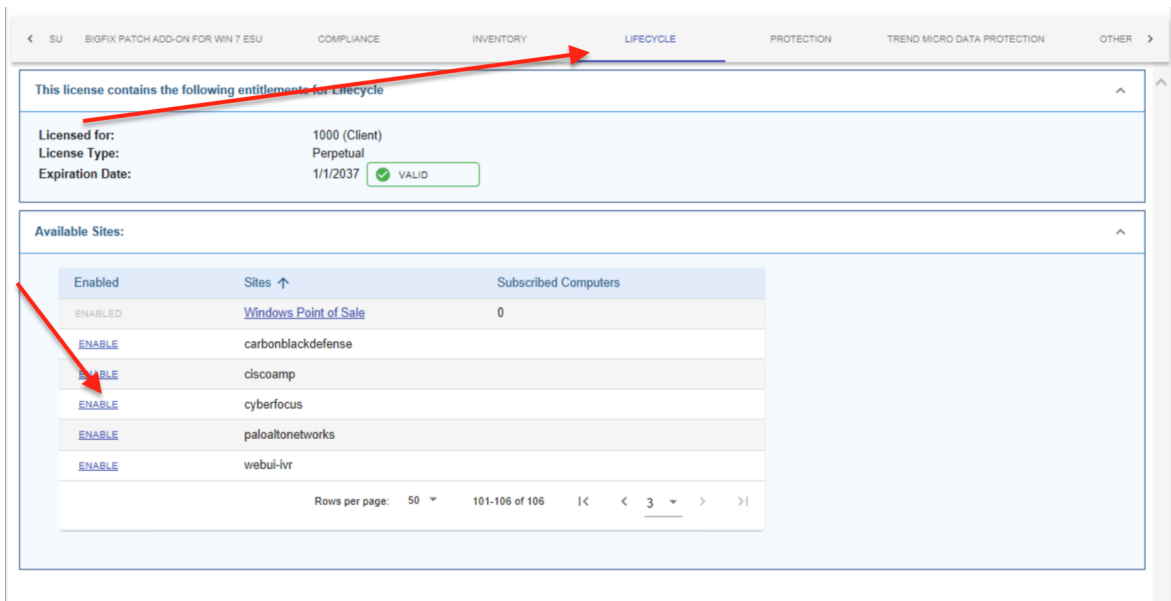


The screenshot shows the BigFix Console interface. At the top, there are tabs for SU, BIGFIX PATCH ADD-ON FOR WIN 7 ESU, COMPLIANCE, INVENTORY, LIFECYCLE, and PROTECTION. The LIFECYCLE tab is selected. Below the tabs, a section titled "This license contains the following entitlements for Lifecycle" displays license details: "Licensed for: 1000 (Client)", "License Type: Perpetual", and "Expiration Date: 1/1/2037" with a green "VALID" status. Below this, the "Available Sites:" section contains a table with columns "Enabled", "Sites ↓", and "Subscribed Computers". The table lists several sites, including "webui-ivr", "paloaltonetworks", "cyberfocus", "ciscoamp", "carbonblackdefense", "Windows Point of Sale", "Windows Defender App for BigFix", "Vulnerability Reporting", "Virtual Endpoint Manager", "Updates for Windows Applications Extended", and "Updates for Windows Applications". Red arrows indicate the navigation path: one arrow points from the "LIFECYCLE" tab to the "Available Sites:" section, and another arrow points from the "ENABLE" link in the "Enabled" column to the "Vulnerability Reporting" site name.

Enabled	Sites ↓	Subscribed Computers
ENABLE	webui-ivr	
ENABLE	paloaltonetworks	
ENABLE	cyberfocus	
ENABLE	ciscoamp	
ENABLE	carbonblackdefense	
ENABLED	Windows Point of Sale	0
ENABLE	Windows Defender App for BigFix	
ENABLED	Vulnerability Reporting	0
ENABLE	Virtual Endpoint Manager	
ENABLED	Updates for Windows Applications Extended	0
ENABLED	Updates for Windows Applications	0



4. In the License Overview Dashboard, navigate to the **Lifecycle** or **Compliance** domain.
5. In the site list, find the site named CyberFOCUS. Click on the enable button next to the site and gather it.



Notices

This information was developed for products and services offered in the US.

HCL may not offer the products, services, or features discussed in this document in other countries. Consult your local HCL representative for information on the products and services currently available in your area. Any reference to an HCL product, program, or service is not intended to state or imply that only that HCL product, program, or service may be used. Any functionally equivalent product, program, or service that does not infringe any HCL intellectual property right may be used instead. However, it is the user's responsibility to evaluate and verify the operation of any non-HCL product, program, or service.

HCL may have patents or pending patent applications covering subject matter described in this document. The furnishing of this document does not grant you any license to these patents. You can send license inquiries, in writing, to:

HCL

330 Potrero Ave.

Sunnyvale, CA 94085

USA

Attention: Office of the General Counsel

For license inquiries regarding double-byte character set (DBCS) information, contact the HCL Intellectual Property Department in your country or send inquiries, in writing, to:

HCL

330 Potrero Ave.

Sunnyvale, CA 94085

USA

Attention: Office of the General Counsel

HCL TECHNOLOGIES LTD. PROVIDES THIS PUBLICATION "AS IS" WITHOUT WARRANTY OF ANY KIND, EITHER EXPRESS OR IMPLIED, INCLUDING, BUT NOT LIMITED TO, THE IMPLIED WARRANTIES OF NON-INFRINGEMENT, MERCHANTABILITY OR FITNESS FOR A PARTICULAR PURPOSE. Some jurisdictions do not allow disclaimer of express or implied warranties in certain transactions, therefore, this statement may not apply to you.

This information could include technical inaccuracies or typographical errors. Changes are periodically made to the information herein; these changes will be incorporated in new editions of the publication. HCL may make improvements and/or changes in the product(s) and/or the program(s) described in this publication at any time without notice.

Any references in this information to non-HCL websites are provided for convenience only and do not in any manner serve as an endorsement of those websites. The materials at those websites are not part of the materials for this HCL product and use of those websites is at your own risk.

HCL may use or distribute any of the information you provide in any way it believes appropriate without incurring any obligation to you.

Licensees of this program who wish to have information about it for the purpose of enabling: (i) the exchange of information between independently created programs and other programs (including this one) and (ii) the mutual use of the information which has been exchanged, should contact:

HCL

330 Potrero Ave.

Sunnyvale, CA 94085

USA

Attention: Office of the General Counsel

Such information may be available, subject to appropriate terms and conditions, including in some cases, payment of a fee.

The licensed program described in this document and all licensed material available for it are provided by HCL under terms of the HCL Customer Agreement, HCL International Program License Agreement or any equivalent agreement between us.

The performance data discussed herein is presented as derived under specific operating conditions. Actual results may vary.

Information concerning non-HCL products was obtained from the suppliers of those products, their published announcements or other publicly available sources. HCL has not tested those products and cannot confirm the accuracy of performance, compatibility or any other claims related to non-HCL products. Questions on the capabilities of non-HCL products should be addressed to the suppliers of those products.

Statements regarding HCL's future direction or intent are subject to change or withdrawal without notice, and represent goals and objectives only.

This information contains examples of data and reports used in daily business operations. To illustrate them as completely as possible, the examples include the names of individuals, companies, brands, and products. All of these names are fictitious and any similarity to actual people or business enterprises is entirely coincidental.

COPYRIGHT LICENSE:

This information contains sample application programs in source language, which illustrate programming techniques on various operating platforms. You may copy, modify, and distribute these sample programs in any form without payment to HCL, for the purposes of developing, using, marketing or distributing application programs conforming to the application programming interface for the operating platform for which the sample programs are written. These examples have not been thoroughly tested under all conditions. HCL, therefore, cannot guarantee or imply reliability, serviceability, or function of these programs. The sample programs are provided "AS IS," without warranty of any kind. HCL shall not be liable for any damages arising out of your use of the sample programs.

Each copy or any portion of these sample programs or any derivative work must include a copyright notice as follows:

© (your company name) (year).

Portions of this code are derived from HCL Ltd. Sample Programs.

Trademarks

HCL Technologies Ltd. and HCL Technologies Ltd. logo, and hcl.com are trademarks or registered trademarks of HCL Technologies Ltd., registered in many jurisdictions worldwide.

Adobe, the Adobe logo, PostScript, and the PostScript logo are either registered trademarks or trademarks of Adobe Systems Incorporated in the United States, and/or other countries.

Java and all Java-based trademarks and logos are trademarks or registered trademarks of Oracle and/or its affiliates.

Microsoft, Windows, Windows NT, and the Windows logo are trademarks of Microsoft Corporation in the United States, other countries, or both.

Linux is a registered trademark of Linus Torvalds in the United States, other countries, or both.

UNIX is a registered trademark of The Open Group in the United States and other countries.

Other product and service names might be trademarks of HCL or other companies.

Terms and conditions for product documentation

Permissions for the use of these publications are granted subject to the following terms and conditions.

Applicability

These terms and conditions are in addition to any terms of use for the HCL website.

Personal use

You may reproduce these publications for your personal, noncommercial use provided that all proprietary notices are preserved. You may not distribute, display or make derivative work of these publications, or any portion thereof, without the express consent of HCL.

Commercial use

You may reproduce, distribute and display these publications solely within your enterprise provided that all proprietary notices are preserved. You may not make derivative works of these publications, or reproduce, distribute or display these publications or any portion thereof outside your enterprise, without the express consent of HCL.

Rights

Except as expressly granted in this permission, no other permissions, licenses or rights are granted, either express or implied, to the publications or any information, data, software or other intellectual property contained therein.

HCL reserves the right to withdraw the permissions granted herein whenever, in its discretion, the use of the publications is detrimental to its interest or, as determined by HCL, the above instructions are not being properly followed.

You may not download, export or re-export this information except in full compliance with all applicable laws and regulations, including all United States export laws and regulations.

HCL MAKES NO GUARANTEE ABOUT THE CONTENT OF THESE PUBLICATIONS. THE PUBLICATIONS ARE PROVIDED "AS-IS" AND WITHOUT WARRANTY OF ANY KIND, EITHER EXPRESSED OR IMPLIED, INCLUDING BUT NOT LIMITED TO IMPLIED WARRANTIES OF MERCHANTABILITY, NON-INFRINGEMENT, AND FITNESS FOR A PARTICULAR PURPOSE.