

BigFix Runbook AI Fixlet Repository

Version 6.3



The data contained in this document shall not be disclosed and shall not be duplicated, used, or disclosed in whole or in part for any purpose. If a contract is awarded to chosen parties as a result of or in connection with the submission of this data, the client or prospective client shall have the right to duplicate, use, or disclose this data to the extent provided in the contract. This restriction does not limit the client's or prospective client's right to use the information contained in the data if it is obtained from another source without restriction. The data subject to this restriction is contained in all marked sheets.

HCL has more than 200 offices worldwide. Addresses, phone numbers, and fax numbers are listed on the HCL website at www.hcltechsw.com.

Copyright © 2023 HCL Tech. All rights reserved.

Table of Contents

1	Preface	21
1.1	Intended Audience	21
1.2	About this Guide	21
1.3	Related Documents	21
1.4	Conventions	22
2	BigFix Runbook AI Overview.....	23
3	Fixlet Repository	26
3.1	Linux Server Management.....	26
3.1.1	Backup of File System	26
3.1.2	Backup of File System using Rsync	26
3.1.3	Backup of File System using Tar	26
3.1.4	Extend Swap Space for Swap file.....	27
3.1.5	Check NFS Port Status	27
3.1.6	Check RPM Package Information	27
3.1.7	Clear Swap Space for Swap file.....	27
3.1.8	Create the Swap Space	27
3.1.9	Create User	27
3.1.10	Disable SELinux	27
3.1.11	Disk Cleanup.....	28
3.1.12	Firewall Port Security Compliance	28
3.1.13	CPU Utilization	28
3.1.14	Memory Utilization	28
3.1.15	Install Cloud Watch Agent	28

3.1.16	Install Package.....	28
3.1.17	Install Postfix.....	28
3.1.18	Logical Volume Creation	29
3.1.19	Mount NFS Server	29
3.1.20	Passwordless Authentication.....	29
3.1.21	Process List of User	29
3.1.22	Remove User	29
3.1.23	Service Restart	29
3.1.24	Set Hardening Parameters.....	29
3.1.25	Set Hostname.....	30
3.1.26	Set Sudo Permissions	30
3.1.27	Setup ResolvConf	30
3.1.28	Show Shadow User Info	30
3.1.29	SSM Agent.....	30
3.1.30	Users with Admin Access	30
3.1.31	Zombie Process	30
3.1.32	Extend Logical Volume.....	31
3.1.33	Remove Logical Volume.....	31
3.1.34	Process_Count_Per_User	31
3.1.35	Delete Group.....	31
3.1.36	Check Package Installed.....	31
3.1.37	Remove Softlink	31
3.1.38	Account Expiry Change	31
3.1.39	Change HomeDirectory User	32
3.1.40	Create Softlink.....	32

3.1.41	List BlockedIP	32
3.1.42	Set File Permission	32
3.1.43	VolGrp LogVol FileSystem	32
3.1.44	Modify Filesystem	32
3.1.45	Creation of Filesystem	32
3.1.46	Deletion of Filesystem	33
3.1.47	Add Entry Sudoers	33
3.1.48	Change Attribute Dir	33
3.1.49	Delete Entry Sudoers	33
3.1.50	Create Archive.....	33
3.1.51	Linux Cronjob Add.....	33
3.2	Windows Server Management.....	33
3.2.1	Add IIS Virtual Directory	33
3.2.2	Add Local User	34
3.2.3	Check Firewall State	34
3.2.4	Create DNS Zone.....	34
3.2.5	Delete Powershell Event Logs	34
3.2.6	Delete Security Event Logs	34
3.2.7	Delete System Event Logs.....	34
3.2.8	Disable User Account.....	34
3.2.9	Disk Cleanup	35
3.2.10	Disk Partition.....	35
3.2.11	Display Environment Variables	35
3.2.12	Display OS Memory.....	35
3.2.13	Enable Drive Quota	35

3.2.14	Get Execution Policy	35
3.2.15	Get Firewall Rules	35
3.2.16	Get Last BootUp Time	36
3.2.17	Hide User Account	36
3.2.18	CPU Utilization	36
3.2.19	Memory Utilization	36
3.2.20	Local Admin.....	36
3.2.21	Local User Deletion	36
3.2.22	Ping Failure.....	36
3.2.23	Remove DNS Zone	37
3.2.24	Seurity Info of Current_User.....	37
3.2.25	Server Reboot	37
3.2.26	Windows Service Restart	37
3.2.27	Unlock User	37
3.2.28	Unzip File.....	37
3.2.29	Modify Min Password Length	37
3.2.30	Modify Max Password Age	38
3.2.31	Set User Logon Hrs.....	38
3.2.32	Remove ACL for User on Directory	38
3.2.33	List Loggedin Users	38
3.2.34	Lock User	38
3.2.35	List Local Admin Users	38
3.3	Active Directory	38
3.3.1	Account Non Expiring Password.....	38
3.3.2	Add Service Account.....	39

3.3.3	Add User to Domain Admins	39
3.3.4	Add User to Group.....	39
3.3.5	Change User Surname	39
3.3.6	Change User Password	39
3.3.7	Check Administrator Privilege	39
3.3.8	Create AD Sites	39
3.3.9	Create Domain User	40
3.3.10	AD_Create_Group.....	40
3.3.11	Create New Authentication Policy.....	40
3.3.12	Create Organizational Unit	40
3.3.13	Create User & Mirror Existing User Property	40
3.3.14	Disable User	40
3.3.15	Enable User	40
3.3.16	Get Authentication Policy Details	41
3.3.17	Get Inactive Computer	41
3.3.18	Link GPO to OU	41
3.3.19	List Expired Accounts	41
3.3.20	Remove AD Sites	41
3.3.21	Remove Group	41
3.3.22	Remove Service Account	41
3.3.23	Remove User	42
3.3.24	Set User Email Attribute	42
3.3.25	Set User Phone Attribute	42
3.3.26	Update Group Policy	42
3.3.27	Check User Direct Membership	42

3.3.28	Create & Add User to Group.....	42
3.3.29	Fetch Group Details	42
3.3.30	Get User Details	43
3.3.31	Change Group Owner	43
3.3.32	Check Installed Updates.....	43
3.3.33	Clean Computer Object.....	43
3.3.34	Empty Group.....	43
3.3.35	Export Users Report	43
3.3.36	Fetch Object Count	43
3.3.37	List Disabled Accounts	44
3.3.38	List Locked Out Accounts	44
3.3.39	List Users Expiry Date.....	44
3.3.40	List Users Profiles	44
3.3.41	List Users With Admin Rights.....	44
3.3.42	Max Domain Password Age	44
3.3.43	Modify Min Password Length Policy.....	44
3.3.44	Set Domain Mode	45
3.3.45	Show GroupMember Details	45
3.3.46	Total Enabled Accounts in OU	45
3.3.47	User Expire Date	45
3.3.48	User's Last Logon Time	45
3.3.49	Verify if User can Change Password	45
3.3.50	Update Computer Object with Name Time	45
3.3.51	Delete Empty Group	45
3.3.52	Export Groups Report	46

3.3.53	Group Membership.....	46
3.3.54	Permission Object.....	46
3.3.55	Set User Expiry Date.....	46
3.3.56	Update Manager.....	46
3.4	Database Management.....	46
3.4.1	Check DB FreeSpace.....	46
3.4.2	Check DB Status.....	47
3.4.3	DB Backup.....	47
3.4.4	Modify Log File Size for DB.....	47
3.4.5	Detach DB.....	47
3.4.6	Drop Clean buffer PNP.....	47
3.4.7	Drop DB.....	47
3.4.8	Services Start.....	47
3.4.9	Shrink DB.....	48
3.4.10	DB Growth PNP.....	48
3.4.11	Check Server Connectivity.....	48
3.4.12	DB Log File Growth Rate.....	48
3.4.13	MSSQL Add Database To Availabilty Group.....	48
3.4.14	MSSQL Backup Transaction Log.....	48
3.4.15	MSSQL Change DB Recovery Model.....	48
3.4.16	MSSQL Check DB Integrity.....	49
3.4.17	MSSQL Check Instance.....	49
3.4.18	MSSQL Check Service Status.....	49
3.4.19	MSSQL Create Database.....	49
3.4.20	MSSQL Create Login.....	49

3.4.21	MSSQL Disable All DB Constraints	49
3.4.22	MSSQL Display Database Performance	49
3.4.23	MSSQL Enable All DB Constraints	50
3.4.24	MSSQL Enable Deadlock Tracing.....	50
3.4.25	MSSQL Fetch DB IOPs Consumption.....	50
3.4.26	MSSQL Grant BulkAdmin To Login.....	50
3.4.27	MSSQL Grant Login Roles.....	50
3.4.28	MSSQL Grant Read Write Permissions	50
3.4.29	MSSQL Index Management	50
3.4.30	MSSQL Latest Backup Check.....	51
3.4.31	MSSQL Modify Compatibility Level.....	51
3.4.32	MSSQL Monitor SQL Service Send Mail If Down.....	51
3.4.33	MSSQL Remove Databases From Availabilty Group.....	51
3.4.34	MSSQL START STOP Service Agent	51
3.4.35	MSSQL Update Statistics.....	51
3.4.36	MSSQL Validate Backup File	51
3.4.37	Oracle Add Members To Redo Log Group	52
3.4.38	Oracle Add Parameters In ParamFile.....	52
3.4.39	Oracle Alter Profile.....	52
3.4.40	Oracle Assign Profile To User.....	52
3.4.41	Oracle Audit Data.....	52
3.4.42	Oracle Change Database Name	52
3.4.43	Oracle Check Backup Status.....	52
3.4.44	Oracle Check Blocking Sessions	53
3.4.45	Oracle Check Database Performance	53

3.4.46	Oracle Check Database Status	53
3.4.47	Oracle Check If Process Crossed Threshold	53
3.4.48	Oracle Check Listener Status	53
3.4.49	Oracle Compile Invalid Function	53
3.4.50	Oracle Compile Invalid Procedure	53
3.4.51	Oracle Create Common Role	54
3.4.52	Oracle Create Common User	54
3.4.53	Oracle Create Container Database	54
3.4.54	Oracle Create Database	54
3.4.55	Oracle Create Database Link.....	54
3.4.56	Oracle Create Datafile.....	54
3.4.57	Oracle Create Directory	54
3.4.58	Oracle Create Guarantee Restore Point	55
3.4.59	Oracle Create Index	55
3.4.60	Oracle Create Listener	55
3.4.61	Oracle Create Local Role	55
3.4.62	Oracle Create Local User On PDB	55
3.4.63	Oracle Create Mview	55
3.4.64	Oracle Create Password File	55
3.4.65	Oracle Create pfile	56
3.4.66	Oracle Create Pluggable Database.....	56
3.4.67	Oracle Create Profile.....	56
3.4.68	Oracle Create Redo Log Group	56
3.4.69	Oracle Create Refresh MatView	56
3.4.70	Oracle Create Role	56

3.4.71	Oracle Create spfile.....	56
3.4.72	Oracle Create Temp Tablespace	56
3.4.73	Oracle Create TNS Entry.....	57
3.4.74	Oracle Create Undo Tablespace	57
3.4.75	Oracle Datafile Addition Temp Tablespace	57
3.4.76	Oracle Datafile Move Diff Location.....	57
3.4.77	Oracle Datafile Resize	57
3.4.78	Oracle Disable Flashback	57
3.4.79	Oracle Drop Database	57
3.4.80	Oracle Drop Database Link	58
3.4.81	Oracle Drop Datafile Temp Tablespace	58
3.4.82	Oracle Drop Directory	58
3.4.83	Oracle Drop Index	58
3.4.84	Oracle Drop Member From Redo Log Group.....	58
3.4.85	Oracle Drop Mview	58
3.4.86	Oracle Drop PDB	58
3.4.87	Oracle Drop Profile	59
3.4.88	Oracle Drop Redo Log Group	59
3.4.89	Oracle Drop Restorepoint.....	59
3.4.90	Oracle Drop Role.....	59
3.4.91	Oracle Drop Tablespace	59
3.4.92	Oracle Enable Archivelog Mode.....	59
3.4.93	Oracle Enable Flashback	59
3.4.94	Oracle Export Fulldatabase	59
3.4.95	Oracle Export Schema.....	60

3.4.96	Oracle Export Table.....	60
3.4.97	Oracle Gather Stats.....	60
3.4.98	Oracle Generate ADDM Report	60
3.4.99	Oracle Generate AWR Report.....	60
3.4.100	Oracle Grant Permission To User On Table	60
3.4.101	Oracle Grant System Permission	60
3.4.102	Oracle Home Cleanup	61
3.4.103	Oracle Import Table	61
3.4.104	Oracle Increase FRA Size	61
3.4.105	Oracle Kill User Session.....	61
3.4.106	Oracle List Top CPU Utilizing Process	61
3.4.107	Oracle List Top Memory Utilizing Process	61
3.4.108	Oracle List Top Wait Events	61
3.4.109	Oracle Lock User	62
3.4.110	Oracle Memory Advisor	62
3.4.111	Oracle Memory Hit Ratio	62
3.4.112	Oracle Monitor Open Cursor	62
3.4.113	Oracle Move Object	62
3.4.114	Oracle Perform HealthCheck	62
3.4.115	Oracle Put In No Archive Mode	62
3.4.116	Oracle Quota On Tablespace	63
3.4.117	Oracle Rebuild Index.....	63
3.4.118	Oracle Rebuild Invalid Indexes.....	63
3.4.119	Oracle Relocate FRA File	63
3.4.120	Oracle Remove Or Modify Parameter In Paramfile.....	63

3.4.121	Oracle Reorganize Table	63
3.4.122	Oracle Reset Password.....	63
3.4.123	Oracle Restore Database From Restore Point	64
3.4.124	Oracle Revoke Permission From User On Table	64
3.4.125	Oracle Revoke System Permission	64
3.4.126	Oracle RMAN Backup Restore	64
3.4.127	Oracle Run Adhoc Script	64
3.4.128	Oracle Shutdown Database	64
3.4.129	Oracle Start CDB.....	64
3.4.130	Oracle Start Database	65
3.4.131	Oracle Start Listener	65
3.4.132	Oracle Start Pluggable Database	65
3.4.133	Oracle Stop CDB.....	65
3.4.134	Oracle Stop Listener	65
3.4.135	Oracle Stop Pluggable Database.....	65
3.4.136	Oracle Take Backup Via RMAN	65
3.4.137	Oracle Unlock User	66
3.4.138	Oracle Unplug PDB.....	66
3.4.139	Oracle User Creation.....	66
3.4.140	Oracle Utlrp Script.....	66
3.4.141	PostGres Alter Group	66
3.4.142	PostGres Alter PolicyName	66
3.4.143	PostGres Analyzer	66
3.4.144	PostGres Change Data Directory	67
3.4.145	PostGres Change Data Wal Directory	67

3.4.146	PostGres Configure PEM Agent	67
3.4.147	PostGres CPU Consumption By Postgres	67
3.4.148	PostGres Create DB.....	67
3.4.149	PostGres Create Group	67
3.4.150	PostGres Create Index	67
3.4.151	PostGres Create Policy	68
3.4.152	PostGres Create Role	68
3.4.153	PostGres Create Schema.....	68
3.4.154	PostGres Create Tablespace	68
3.4.155	PostGres Create User With DB Access.....	68
3.4.156	PostGres Create View	68
3.4.157	PostGres Delete Policy	68
3.4.158	PostGres Drop Cluster.....	69
3.4.159	PostGres Drop Database	69
3.4.160	PostGres Drop Group.....	69
3.4.161	PostGres Drop Index	69
3.4.162	PostGres Drop Role.....	69
3.4.163	PostGres Drop Schema	69
3.4.164	PostGres Drop Tablespace	69
3.4.165	PostGres Drop User.....	70
3.4.166	PostGres Drop View	70
3.4.167	PostGres Extract Bloating Report	70
3.4.168	PostGres Grant Permission To User.....	70
3.4.169	PostGres Install EDB Bart	70
3.4.170	PostGres Install EDB EFM Agent	70

3.4.171	PostGres Install EDB PEM	70
3.4.172	PostGres Install EDB PGBouncer.....	71
3.4.173	PostGres Install PEM Agent	71
3.4.174	PostGres Install Postgres DB.....	71
3.4.175	PostGres Install Witness Server	71
3.4.176	PostGres List Running Queries.....	71
3.4.177	PostGres Memory Consumption By Postgres.....	71
3.4.178	PostGres Perform Disaster Recovery.....	71
3.4.179	PostGres Perform Failover	72
3.4.180	PostGres Perform Physical Restore	72
3.4.181	PostGres Perform Streaming Replication	72
3.4.182	PostGres Perform Vacuum.....	72
3.4.183	PostGres Reindex	72
3.4.184	PostGres Rename View.....	72
3.4.185	PostGres Restart Service.....	73
3.4.186	PostGres Restore Full Database.....	73
3.4.187	PostGres Restore Shema.....	73
3.4.188	PostGres Restore Table.....	73
3.4.189	PostGres Revoke Table Access.....	73
3.4.190	PostGres Start EDB EFM Agent.....	73
3.4.191	PostGres Start PEM Agent	73
3.4.192	PostGres Start Service.....	74
3.4.193	PostGres Stop EDB EFM Agent.....	74
3.4.194	PostGres Stop PEM Agent.....	74
3.4.195	PostGres Stop Service	74

3.4.196	PostGres Take Logical Backup.....	74
3.4.197	PostGres Take Physical Backup.....	74
3.4.198	PostGres Update Config Parameter.....	74
3.4.199	PostGres Update HBA Config.....	75
3.5	Network Management	75
3.5.1	Enable DHCP Tracing	75
3.5.2	DNS Server Diagnostics.....	75
4	Onboarding of Fixlets on Bigfix Instance.....	76
4.1	Prerequisites.....	76
4.2	Creation of Bigfix Operator	76
4.3	Creation of Bigfix Custom Site.....	83
4.4	Importing Bigfix Fixlets	85
5	Configuring and Managing the Fixlets on BigFix Runbook AI instance.....	88
6	Appendix	89

Table of Figures

Figure 1 - BigFix Runbook AI Workflow	24
Figure 2 – Create Operator	77
Figure 3 – Create Operator – Username and Password	77
Figure 4 – Create Operator – Set Master Operator Permissions.....	78
Figure 5 – Create Operator – Set Master Operator Permissions.....	79
Figure 6 – Create Operator – Select Options.....	80
Figure 7 – Create Operator – Validate the created operator	80
Figure 8 – Subscribing the Computers.....	80
Figure 9 – Subscribing the Computers (cont.)	81
Figure 10 – Subscribing the Computers (cont.)	81
Figure 11 – Subscribing the Computers (cont.)	82
Figure 12 – Subscribing the Computers (cont.)	82
Figure 13 – Subscribing the Computers (cont.)	83
Figure 14 – Create Custom Site.....	83
Figure 15 – Create Custom Site (cont.)	84
Figure 16 – Create Custom Site (cont.)	84
Figure 17 – Import Fixlets	85
Figure 18 – Import Fixlets (cont.).....	86
Figure 19 – Import Fixlets (cont.).....	87
Figure 20 – Import Fixlets (cont.).....	87

List of Tables

Table 1 - Conventions	22
Table 2 List of Abbreviations.....	89

Document Revision History

This document updates with each release of the product or when necessary.

This table provides the update history of this Fixlet Repository.

Version Date	Description
March, 2023	BigFix Runbook AI v6.3– Fixlet Repository for HCL Bigfix

1 Preface

This section provides information about the BigFix Runbook AI Fixlet Repository for HCL Bigfix and includes the following topics.

- [Intended Audience](#)
- [About This Guide](#)
- [Related Documents](#)
- [Conventions](#)

1.1 Intended Audience

This information is intended for administrators and users authorized for configuring use cases / fixlets within BigFix Runbook AI, which works in conjunction with HCL Bigfix engine.

1.2 About this Guide

This document provides detailed list of out of the box fixlets available within BigFix Runbook AI.

1.3 Related Documents

The following documents can be referenced in addition to this guide for further information on the BigFix Runbook AI platform.

- BigFix Runbook AI Configuration Guide
- BigFix Runbook AI Integration Guide

1.4 Conventions

The following typographic conventions are used in this document:

Table 1 - Conventions

Convention	Element
Boldface	Indicates graphical user interface elements associated with an action, or terms defined in text or the glossary
<u>Underlined Blue face</u>	Indicates cross-reference and links
Numbered lists	Indicates steps in a procedure to be followed in a sequence
Bulleted lists	Indicates a list of items that is not necessarily meant to be followed in a sequence

2 BigFix Runbook AI Overview

BigFix Runbook AI is an Intelligent Runbook Automation product which is equipped with Artificial Intelligence, Machine Learning and Natural Language Processing capabilities for simplifying and automating the IT Operations issues resolution lifecycle including incidents, service request tasks, change request tasks and events. It leverages its NLP capabilities for analyzing and understanding the context of a specific issue, recommends the most relevant solution and even triggers the execution, thereby enabling Zero Touch Automated Remediation. It also provides AI-driven Knowledge Recommendation by suggesting relevant knowledge articles from various repositories, both internal and external, as and when required by human agents.

When no runbook is available for automated remediation, it searches & downloads relevant executable codes and scripts for subject matter expert to validate, customize, approve and publish for future use.

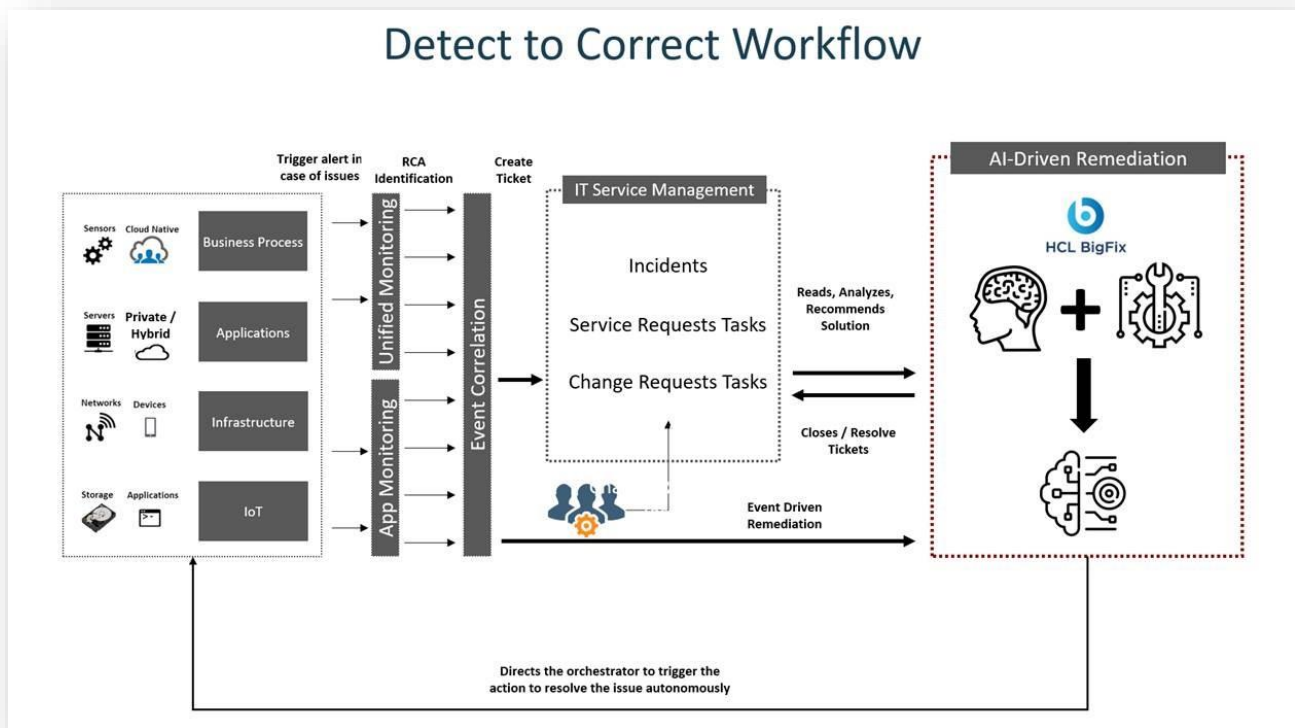


Figure 1 - BigFix Runbook AI Workflow

Intelligent automation powered by BigFix Runbook AI can make a tremendous impact in an enterprise adjusting to the New Normal:

- **Reduce Costs**
 - Achieve up to 30% reduction in service desk related costs
 - Quick and High ROI
- **Mitigate Risks**
 - Avoid operational risks and ensure compliance by avoiding critical outages
 - Reduce escalations and improve SLA compliance by up to 20%
 - Achieve up to 85% reduction in MTTR
- **Drive Efficiency**
 - Automate redundant tasks and let employees focus on more creative activities
 - Reduce manual effort by 30% to 60%
 - Improve customer satisfaction by up to 50% by providing faster incident and service request resolutions.

– **Rapid Time to Value**

- Quick implementation in 6 to 8 weeks*
- Leverage 300+ reusable and configurable runbooks out of the box
- Achieve zero-touch automation state in 4 to 5 months*

*Conditions Apply

3 Fixlet Repository

This section provides the category-wise detailed list of the out of the box fixlets available within BigFix Runbook AI, supported by the Bigfix engine. It also includes the input parameters required by the respective fixlet, which is fetched from any event / PRC / ticket description by BigFix Runbook AI.

Currently, the fixlets are broadly categorized as below –

1. [Linux Server Management](#)
2. [Windows Server Management](#)
3. [Active Directory](#)
4. [Database Management](#)

The subsequent sections will cover the fixlet list within each of the above categories in detail.

3.1 Linux Server Management

3.1.1 Backup of File System

Fixlet User Friendly Name	Linux_Backup_Fileystem
Description	Backup a Filesystem in gz format mounted on and store backup file in destination path.

3.1.2 Backup of File System using Rsync

Fixlet User Friendly Name	Linux_Backup_Fileystem_Using_Rsync
Description	Create a backup of Filesystem using rsync mounted on and store the backup file in the path.

3.1.3 Backup of File System using Tar

Fixlet User Friendly Name	Linux_Backup_Fileystem_Using_Tar
Description	Create a backup of Filesystem in tar format mounted on and store the backup file in the path in tar format.

3.1.4 Extend Swap Space for Swap file

Fixlet User Friendly Name	Linux_Change_Swap_Space
Description	Extends the swap space for the swapfile in the Linux server.

3.1.5 Check NFS Port Status

Fixlet User Friendly Name	Linux_Check_NFS_Port
Description	Checks whether the NFS port is open or not. Also checks the NFS port for accessibility.

3.1.6 Check RPM Package Information

Fixlet User Friendly Name	Linux_Check_RPM_Package_Info
Description	Checks if the RPM package is installed and fetches its information. Also checks RPM installation status.

3.1.7 Clear Swap Space for Swap file

Fixlet User Friendly Name	Linux_Clear_Swap_Space
Description	Creates a swap file to create a swap in the Linux server.

3.1.8 Create the Swap Space

Fixlet User Friendly Name	Linux_Create_Swap_Space
Description	Extends the swap space for the swapfile in the Linux server.

3.1.9 Create User

Fixlet User Friendly Name	Linux_Create_User
Description	Creates a user on the Linux server.

3.1.10 Disable SELinux

Fixlet User Friendly Name	Linux_Disable_Selinux
Description	Runs the command setenforce 0 to disable the Selinux.

3.1.11 Disk Cleanup

Fixlet User Friendly Name	Linux_Disk_Cleanup
Description	Frees disk space on the Linux server.

3.1.12 Firewall Port Security Compliance

Fixlet User Friendly Name	Linux_Firewall_Port_Security_Compliance
Description	This installs port security on Linux server. Port Security is compliance configured on firewall.

3.1.13 CPU Utilization

Fixlet User Friendly Name	Linux_High_CPU_Utilization
Description	Prints the CPU utilization and finds high CPU utilization on server. Kills processes to reduce usage.

3.1.14 Memory Utilization

Fixlet User Friendly Name	Linux_High_Memory_Utilization
Description	Checks memory (RAM) usage on the Linux server and finds high memory usage on the server.

3.1.15 Install Cloud Watch Agent

Fixlet User Friendly Name	Linux_Install_Cloud_Watch_Agent
Description	Installs cloudwatch package. Enables and starts Amazon Cloudwatch Agent.

3.1.16 Install Package

Fixlet User Friendly Name	Linux_Install_Package
Description	Install RPM package. Configure RPM package.

3.1.17 Install Postfix

Fixlet User Friendly Name	Linux_Install_Postfix
Description	Install Postfix to route and deliver email on a Linux system.

3.1.18 Logical Volume Creation

Fixlet User Friendly Name	Linux_Logical_Volume_Creation
Description	Adds a new Logical volume to the server.

3.1.19 Mount NFS Server

Fixlet User Friendly Name	Linux_Mount_NFS_Server
Description	Checks whether the NFS mount point is mounted or not. Also checks NFS mount status.

3.1.20 Passwordless Authentication

Fixlet User Friendly Name	Linux_Passwordless_Authentication
Description	Configuring this enables passwordless authentication on Linux server.

3.1.21 Process List of User

Fixlet User Friendly Name	Linux_Process_List_Of_User
Description	Lists the processes of the user on the machine.

3.1.22 Remove User

Fixlet User Friendly Name	Linux_Remove_User
Description	Enables removal or deletion of existing user.

3.1.23 Service Restart

Fixlet User Friendly Name	Linux_Service_Restart
Description	Restarts the specified services on Linux server if available.

3.1.24 Set Hardening Parameters

Fixlet User Friendly Name	Set_Hardening_Parameters
Description	Sets the checklist during risk assessments as part of the process to verify that servers are secure i.e. sets hardening parameters on the Linux server.

3.1.25 Set Hostname

Fixlet User Friendly Name	Linux_Set_Hostname
Description	Allows setting or changing the hostname.

3.1.26 Set Sudo Permissions

Fixlet User Friendly Name	Linux_Set_Sudo_Permissions
Description	Sets root sudo permissions.

3.1.27 Setup ResolvConf

Fixlet User Friendly Name	Linux_Setup_ResolveConf
Description	Sets up resolver configuration file for Linux systems to configure DNS name servers.

3.1.28 Show Shadow User Info

Fixlet User Friendly Name	Linux_Show_Shadow_User_Info
Description	Displays the shadow user information on a specified Linux server.

3.1.29 SSM Agent

Fixlet User Friendly Name	Linux_SSM_Agent
Description	SSM Agent sends status and execution information back to the Systems Manager service by using the Amazon Message Delivery Service.

3.1.30 Users with Admin Access

Fixlet User Friendly Name	Linux_Users_With_Admin_Access
Description	Fetches the list of all the users having admin privileges.

3.1.31 Zombie Process

Fixlet User Friendly Name	Linux_Zombie_Process
Description	Lists the count of zombie process in linux server.

3.1.32 Extend Logical Volume

Fixlet User Friendly Name	Linux_Logical_Volume_Extend
Description	Extends the Logical volume by adding space to it. Can also resize the Logical volume.

3.1.33 Remove Logical Volume

Fixlet User Friendly Name	Linux_Logical_Volume_Remove
Description	Removes Logical volume from the server.

3.1.34 Process_Count_Per_User

Fixlet User Friendly Name	Linux_Process_Count_Per_User
Description	Counts processes run by each user and gives a count.

3.1.35 Delete Group

Fixlet User Friendly Name	Linux_Group_Delete
Description	Allows for deletion of existing groups in Linux server.

3.1.36 Check Package Installed

Fixlet User Friendly Name	Linux_Check_Package_Installed
Description	Validates if the software is already installed or not. Checks installed software status.

3.1.37 Remove Softlink

Fixlet User Friendly Name	Linux_Remove_Softlink
Description	Allows for removal or deletion of existing softlinks.

3.1.38 Account Expiry Change

Fixlet User Friendly Name	Linux_Account_Expiry_Change
Description	Changes the expiry date of the user. Also edits the expiry date of user.

3.1.39 Change HomeDirectory User

Fixlet User Friendly Name	Linux_Change_HomeDirectory_User
Description	Changes the home directory for the user in the Linux server.

3.1.40 Create Softlink

Fixlet User Friendly Name	Linux_Create_Softlink
Description	Creates a symbolic link (also known as a softlink or symlink) consisting of a special type of file that serves as a reference to another file or directory.

3.1.41 List BlockedIP

Fixlet User Friendly Name	Linux_List_BlockedIP
Description	Finds/Checks Banned (Denied) IP addresses.

3.1.42 Set File Permission

Fixlet User Friendly Name	Linux_Set_File_Permission
Description	Changes permissions of files or directories.

3.1.43 VolGrp LogVol FileSystem

Fixlet User Friendly Name	Linux_VolGrp_LogVol_FileSystem
Description	Fetches the list of all volume groups and logical volumes. Gets all logical volumes groups.

3.1.44 Modify Filesystem

Fixlet User Friendly Name	Linux_Modify_FileSystem
Description	Modifies the format of the partition. Also modifies the format of filesystem.

3.1.45 Creation of Filesystem

Fixlet User Friendly Name	Linux_FileSystem_Creation
Description	Adds filesystem to the target server. Mounts and enables filesystem to the target server.

3.1.46 Deletion of Filesystem

Fixlet User Friendly Name	Linux_Filesystem_Deletion
Description	This removes the filesystem from the Linux OS. Filesystem removal from linux OS.

3.1.47 Add Entry Sudoers

Fixlet User Friendly Name	Linux_Add_Entry_Sudoers
Description	Provides access to users into the sudoers file. Gives access to users in sudoers file.

3.1.48 Change Attribute Dir

Fixlet User Friendly Name	Linux_Change_Attribute_Dir
Description	Changes file attributes to Linux. Attribute directory needs to be changed.

3.1.49 Delete Entry Sudoers

Fixlet User Friendly Name	Linux_Delete_Entry_Sudoers
Description	Deletes user entry and its parameters from /etc/sudoers file.

3.1.50 Create Archive

Fixlet User Friendly Name	Linux_Create_Archive
Description	Creates the archive for the file.

3.1.51 Linux Cronjob Add

Fixlet User Friendly Name	Linux_Cronjob_Add
Description	Schedules cron job/task/script at a specific time.

3.2 Windows Server Management

3.2.1 Add IIS Virtual Directory

Fixlet User Friendly Name	Windows_Add_IIS_Virtual_Directory
Description	Creates a virtual directory in IIS.

3.2.2 Add Local User

Fixlet User Friendly Name	Windows_Add_Local_User
Description	Adds a local user to the windows machine.

3.2.3 Check Firewall State

Fixlet User Friendly Name	Windows_Check_Firewall_State
Description	Allows you to check the state of the Firewall.

3.2.4 Create DNS Zone

Fixlet User Friendly Name	Windows_Create_DNS_Zone
Description	Creates a DNS Zone from Windows Server.

3.2.5 Delete Powershell Event Logs

Fixlet User Friendly Name	Windows_Delete_Powershell_Event_Logs
Description	Deletes Powershell Event Logs from Windows Server. Clears powershell event logs.

3.2.6 Delete Security Event Logs

Fixlet User Friendly Name	Windows_Delete_Security_Event_Logs
Description	Deletes Security Event Logs from Windows Server. Clears security event logs.

3.2.7 Delete System Event Logs

Fixlet User Friendly Name	Windows_Delete_System_Event_Logs
Description	Deletes System Event Logs from Windows Server. Clears system event logs.

3.2.8 Disable User Account

Fixlet User Friendly Name	Windows_Disable_User_Account
Description	Disables a windows local user account.

3.2.9 Disk Cleanup

Fixlet User Friendly Name	Windows_Disk_Cleanup
Description	Frees up disk space on windows server hard drive. Clears disk space.

3.2.10 Disk Partition

Fixlet User Friendly Name	Windows_Disk_Partition
Description	Creates a new Disk partition on Windows machine. Also clears disk partition.

3.2.11 Display Environment Variables

Fixlet User Friendly Name	Windows_Display_Environment_Variables
Description	Lists all the environment variables in Linux.

3.2.12 Display OS Memory

Fixlet User Friendly Name	Windows_Display_OS_Memory
Description	Displays OS memory of windows server.

3.2.13 Enable Drive Quota

Fixlet User Friendly Name	Windows_Drive_Quota_Enable
Description	Enables Drive Quota on the Windows Server.

3.2.14 Get Execution Policy

Fixlet User Friendly Name	Windows_Get_Execution_Policy
Description	Allows the display of execution policies for each scope in the order of precedence.

3.2.15 Get Firewall Rules

Fixlet User Friendly Name	Windows_Get_Firewall_Rules
Description	Displays firewall rules on windows server.

3.2.16 Get Last BootUp Time

Fixlet User Friendly Name	Windows_Get_Last_BootUp_Time
Description	Displays the last boot up time details of the windows server.

3.2.17 Hide User Account

Fixlet User Friendly Name	Windows_Hide_User_Account
Description	It hides the user account.

3.2.18 CPU Utilization

Fixlet User Friendly Name	Windows_High_CPU_Utilization
Description	Checks the utilization of services on windows server, counts the number of processes which are running. Shows high CPU utilization on windows sever.

3.2.19 Memory Utilization

Fixlet User Friendly Name	Windows_High_Memory_Utilization
Description	Displays the memory (RAM) on windows server. Shows high memory utilization on windows server.

3.2.20 Local Admin

Fixlet User Friendly Name	Windows_Local_Admin
Description	Gets the list of all local admin users on a windows server.

3.2.21 Local User Deletion

Fixlet User Friendly Name	Windows_Local_User_Deletion
Description	Deletes a specified local user from a given windows server.

3.2.22 Ping Failure

Fixlet User Friendly Name	Windows_Ping_Failure
Description	Checks if the windows server is ready to communicate or not.

3.2.23 Remove DNS Zone

Fixlet User Friendly Name	Windows_Remove_DNS_Zone
Description	Removes given DNS Zone from Windows Server.

3.2.24 Security Info of Current_User

Fixlet User Friendly Name	Windows_Security_Info_Of_Current_User
Description	Provides Security Information of Current users.

3.2.25 Server Reboot

Fixlet User Friendly Name	Windows_Server_Reboot
Description	Restarts the windows machine in case server if windows server needs restarting.

3.2.26 Windows Service Restart

Fixlet User Friendly Name	Windows_Service_Restart
Description	Restarts the specified services on Windows server if available.

3.2.27 Unlock User

Fixlet User Friendly Name	Windows_Unlock_User
Description	Unlocks the user account.

3.2.28 Unzip File

Fixlet User Friendly Name	Windows_Unzip_File
Description	Unzips a given compressed file at a specified location.

3.2.29 Modify Min Password Length

Fixlet User Friendly Name	Windows_Modify_Min_Password_Length
Description	Allows for modification in minimum password length.

3.2.30 Modify Max Password Age

Fixlet User Friendly Name	Windows_Modify_Min_Password_Length
Description	Allows for changes to maximum password age allowed.

3.2.31 Set User Logon Hrs

Fixlet User Friendly Name	Windows_Set_User_Logon_Hrs
Description	Sets logon hours for a particular user.

3.2.32 Remove ACL for User on Directory

Fixlet User Friendly Name	Windows_Remove_ACL_For_User_On_Directory
Description	Allows for removal of ACL for user on Directory.

3.2.33 List Loggedin Users

Fixlet User Friendly Name	Windows_List_Loggedin_Users
Description	Manages and fetches list of users logged into Windows at that moment.

3.2.34 Lock User

Fixlet User Friendly Name	Windows_Lock_User
Description	Manages and fetches Windows locked users list.

3.2.35 List Local Admin Users

Fixlet User Friendly Name	Windows_List_Local_Admin_Users
Description	Manages and fetches the list of users with Local Admin management rights. Requires Fetch windows list of local admin users.

3.3 Active Directory

3.3.1 Account Non Expiring Password

Fixlet User Friendly Name	AD_Account_Non_Expiring_Password
Description	Fetches and displays the AD accounts which have non-expiring password.

3.3.2 Add Service Account

Fixlet User Friendly Name	AD_Add_Service_Account
Description	Allows user to add service account to AD. Service account needs to be added in AD computer.

3.3.3 Add User to Domain Admins

Fixlet User Friendly Name	AD_Add_User_To_Domain_Admins
Description	Adds user to admin group.

3.3.4 Add User to Group

Fixlet User Friendly Name	AD_Add_User_To_Group
Description	Adds an AD user to Given AD group.

3.3.5 Change User Surname

Fixlet User Friendly Name	AD_Change_Surname_User
Description	Changes Surname of the existing AD user.

3.3.6 Change User Password

Fixlet User Friendly Name	AD_Change_User_Password
Description	Allows for the change, updating, and setting up new, password of an Active Directory user.

3.3.7 Check Administrator Privilege

Fixlet User Friendly Name	AD_Check_Administrator_Privilege
Description	Checks the admin privileges of the current user.

3.3.8 Create AD Sites

Fixlet User Friendly Name	AD_Create_AD_Sites
Description	Creates and generates AD sites.

3.3.9 Create Domain User

Fixlet User Friendly Name	AD_Create_Domain_User
Description	Creates and adds a user within the machine domain.

3.3.10 AD_Create_Group

Fixlet User Friendly Name	AD_Create_Group
Description	Create a new AD group.

3.3.11 Create New Authentication Policy

Fixlet User Friendly Name	AD_Create_New_Authentication_Policy
Description	Creates a new authentication policy in AD.

3.3.12 Create Organizational Unit

Fixlet User Friendly Name	AD_Create_Organizational_Unit
Description	Create an organizational unit in an AD server.

3.3.13 Create User & Mirror Existing User Property

Fixlet User Friendly Name	AD_Create_User_&_Mirror_Existing_User_Property
Description	Copies the properties of existing user to new user. Also creates user and copies existing properties.

3.3.14 Disable User

Fixlet User Friendly Name	AD_Disable_User
Description	Disables an AD user.

3.3.15 Enable User

Fixlet User Friendly Name	AD_Enable_User
Description	Enables/Activates AD User account.

3.3.16 Get Authentication Policy Details

Fixlet User Friendly Name	AD_Get_Authentication_Policy_Details
Description	Checks the configured Authentication Policy in AD.

3.3.17 Get Inactive Computer

Fixlet User Friendly Name	AD_Get_Inactive_Computer
Description	Fetches the list of inactive computers.

3.3.18 Link GPO to OU

Fixlet User Friendly Name	AD_Get_Inactive_Computer
Description	Links Group Policy to Organisational Units (OUs).

3.3.19 List Expired Accounts

Fixlet User Friendly Name	AD_List_Expired_Accounts
Description	Fetches the details of all expired AD Accounts and displays all the properties of the respective user accounts.

3.3.20 Remove AD Sites

Fixlet User Friendly Name	AD_Remove_AD_Sites
Description	Removes/deletes AD sites.

3.3.21 Remove Group

Fixlet User Friendly Name	AD_Remove_Group
Description	Removes/deletes AD Groups specified by the user.

3.3.22 Remove Service Account

Fixlet User Friendly Name	AD_Remove_Service_Account
Description	Removes AD computer Service Accounts specified by the user.

3.3.23 Remove User

Fixlet User Friendly Name	AD_Remove_User
Description	Removes/Deletes a user from the AD.

3.3.24 Set User Email Attribute

Fixlet User Friendly Name	AD_Set_User_Email_Attribute
Description	Sets up the email & its attributes of an AD user.

3.3.25 Set User Phone Attribute

Fixlet User Friendly Name	AD_Set_User_Phone_Attribute
Description	Sets up phone numbers for an Active Directory User. Executed when user wants to set phone tab attribute for AD user. Phone number needs to be added to the User profile.

3.3.26 Update Group Policy

Fixlet User Friendly Name	AD_Update_Group_Policy
Description	Updates the group policy.

3.3.27 Check User Direct Membership

Fixlet User Friendly Name	AD_Check_User_Direct_Membership
Description	Checks if the user is a direct member of the AD group. Fetches the properties of user membership in AD.

3.3.28 Create & Add User to Group

Fixlet User Friendly Name	AD_Create_&_Add_User_To_Group
Description	Creates a new AD Group and adds a user into it.

3.3.29 Fetch Group Details

Fixlet User Friendly Name	AD_Fetch_Group_Details
Description	Fetches the details of a group by its SAM account name. Also shows the members groups.

3.3.30 Get User Details

Fixlet User Friendly Name	AD_Get_User_Details
Description	Checks if a user is present in AD and will give all its details.

3.3.31 Change Group Owner

Fixlet User Friendly Name	AD_Change_Group_Owner
Description	Changes, modifies, and updates the group owner of a group on a Windows server.

3.3.32 Check Installed Updates

Fixlet User Friendly Name	AD_Check_Installed_Updates
Description	Checks for, fetches, verifies, and validates the installed updates.

3.3.33 Clean Computer Object

Fixlet User Friendly Name	AD_Clean_Computer_Object
Description	Cleans and clears the AD computer objects.

3.3.34 Empty Group

Fixlet User Friendly Name	AD_Empty_Group
Description	Empties a given AD group if the user wants to remove all the users inside given group. Clears all group members in an AD.

3.3.35 Export Users Report

Fixlet User Friendly Name	AD_Export_Users_Report
Description	Fetches all groups and corresponding group members of AD server and saves it in a csv format. Also generates a report of all the groups and their members in AD.

3.3.36 Fetch Object Count

Fixlet User Friendly Name	AD_Fetch_Object_Count
Description	Counts the number of objects available in Active directory. Gets the count of AD objects in the active directory.

3.3.37 List Disabled Accounts

Fixlet User Friendly Name	AD_List_Disabled_Accounts
Description	Fetches the details of all the AD Accounts that are disabled. Also displays all the properties of the respective user accounts.

3.3.38 List Locked Out Accounts

Fixlet User Friendly Name	AD_List_Locked_Out_Accounts
Description	Lists all locked out accounts in Active Directory.

3.3.39 List Users Expiry Date

Fixlet User Friendly Name	AD_List_Users_Expiry_Date
Description	Displays the expiry date of the AD users.

3.3.40 List Users Profiles

Fixlet User Friendly Name	AD_List_Users_Profiles
Description	Lists user profiles on the current server that are configured.

3.3.41 List Users With Admin Rights

Fixlet User Friendly Name	AD_List_Users_With_Admin_Rights
Description	Lists all the users with admin access on AD server.

3.3.42 Max Domain Password Age

Fixlet User Friendly Name	AD_Max_Domain_Pswd_Age
Description	Finds out the maximum password age.

3.3.43 Modify Min Password Length Policy

Fixlet User Friendly Name	AD_Modify_Min_Password_Length_Policy
Description	Modifies the minimum length required for an account password in Active Directory.

3.3.44 Set Domain Mode

Fixlet User Friendly Name	AD_Set_Domain_Mode
Description	Allows the user to set the AD domain modes.

3.3.45 Show GroupMember Details

Fixlet User Friendly Name	AD_Show_GroupMember_Details
Description	Displays the details of all the members of a given AD group.

3.3.46 Total Enabled Accounts in OU

Fixlet User Friendly Name	AD_Total_Enabled_Accounts_In_OU
Description	Counts all the Enabled accounts in an AD server.

3.3.47 User Expire Date

Fixlet User Friendly Name	AD_User_Expire_Date
Description	Sets the expiration date for an Active Directory account.

3.3.48 User's Last Logon Time

Fixlet User Friendly Name	AD_Users_Last_Logon_Time
Description	Fetches the last logon time of users.

3.3.49 Verify if User can Change Password

Fixlet User Friendly Name	AD_Verify_If_User_Can_Change_Password
Description	Verifies and confirms if the user can change password or not.

3.3.50 Update Computer Object with Name Time

Fixlet User Friendly Name	AD_Update_Computer_Object_With_Name_Time
Description	Updates AD Computer Objects description fields with user ID and time.

3.3.51 Delete Empty Group

Fixlet User Friendly Name	AD_Delete_Empty_Group
---------------------------	-----------------------

Description	Deletes/Removes empty AD groups.
-------------	----------------------------------

3.3.52 Export Groups Report

Fixlet User Friendly Name	AD_Export_Groups_Report
Description	Fetches all groups and corresponding group members of AD server and saves it in csv format. Also generates reports of all the groups and their members in AD.

3.3.53 Group Membership

Fixlet User Friendly Name	AD_Group_Membership
Description	Lists Group Membership in AD.

3.3.54 Permission Object

Fixlet User Friendly Name	AD_Permission_Object
Description	Fetches AD permissions on an object.

3.3.55 Set User Expiry Date

Fixlet User Friendly Name	AD_Set_User_Expiry_Date
Description	Sets Expiry policy for AD user.

3.3.56 Update Manager

Fixlet User Friendly Name	AD_Update_Manager
Description	Updates the Update Manager in AD.

3.4 Database Management

3.4.1 Check DB FreeSpace

Fixlet User Friendly Name	SQL_Check_DB_FreeSpace
Description	Checks for available free space in the database.

3.4.2 Check DB Status

Fixlet User Friendly Name	SQL_Check_DB_Status
Description	Checks the status of the database. Requires Get DB status.

3.4.3 DB Backup

Fixlet User Friendly Name	SQL_DB_Backup
Description	Takes the backup of the database.

3.4.4 Modify Log File Size for DB

Fixlet User Friendly Name	SQL_DB_Backup
Description	Changes the maximum size of log file for a particular database.

3.4.5 Detach DB

Fixlet User Friendly Name	SQL_Detach_DB
Description	Detaches a specified database.

3.4.6 Drop Clean buffer PNP

Fixlet User Friendly Name	SQL_Drop_Clean_buffer_PNP
Description	Cleans buffer of specified database.

3.4.7 Drop DB

Fixlet User Friendly Name	SQL_Drop_DB
Description	Drops a specified database.

3.4.8 Services Start

Fixlet User Friendly Name	SQL_Services_Start
Description	Checks the status of the service in Database. If the service is running, it will restart the service else it will start the service.

3.4.9 Shrink DB

Fixlet User Friendly Name	SQL_Shrink_DB
Description	Shrinks a specified database.

3.4.10 DB Growth PNP

Fixlet User Friendly Name	SQL_DB_Growth_PNP
Description	Displays the growth of Database. Database growth is PNP monitored.

3.4.11 Check Server Connectivity

Fixlet User Friendly Name	SQL_Check_Server_Connectivity
Description	Checks SQL Server connectivity.

3.4.12 DB Log File Growth Rate

Fixlet User Friendly Name	SQL_DB_Log_File_Growth_Rate
Description	Gives the report of database log file growth rate of all the databases in SQL instance. Monitors growth rate of log file.

3.4.13 MSSQL Add Database To Availabilty Group

Fixlet User Friendly Name	MSSQL_Add_Database_To_Availabilty_Group
Description	Adds a database to an availability group in MSSQL Server.

3.4.14 MSSQL Backup Transaction Log

Fixlet User Friendly Name	MSSQL_Backup_Transaction_Log
Description	Performs a transaction log backup of a MS SQL instance

3.4.15 MSSQL Change DB Recovery Model

Fixlet User Friendly Name	MSSQL_Change_DB_Recovery_Model
Description	Updates/modifies the recovery model for a given MS SQL instance

3.4.16 MSSQL Check DB Integrity

Fixlet User Friendly Name	MSSQL_Check_DB_Integrity
Description	Performs a database integrity check against a specified database on a given MS SQL instance

3.4.17 MSSQL Check Instance

Fixlet User Friendly Name	MSSQL_Check_Instance
Description	Displays the MS SQL Server instance version

3.4.18 MSSQL Check Service Status

Fixlet User Friendly Name	MSSQL_Check_Service_Status
Description	Checks and validates the status of the MS SQL Service

3.4.19 MSSQL Create Database

Fixlet User Friendly Name	MSSQL_Create_Database
Description	Creates a new database in the MS SQL Server

3.4.20 MSSQL Create Login

Fixlet User Friendly Name	MSSQL_Create_Login
Description	Creates new SQL login for a given user and the password is sent to their email ID. The user is granted access on the master database.

3.4.21 MSSQL Disable All DB Constraints

Fixlet User Friendly Name	MSSQL_Disable_All_DB_Constraints
Description	Disables all constraints for a specified database residing on a given MS SQL server instance

3.4.22 MSSQL Display Database Performance

Fixlet User Friendly Name	MSSQL_Display_Database_Performance
Description	Displays the performance of all the databases

3.4.23 MSSQL Enable All DB Constraints

Fixlet User Friendly Name	MSSQL_Enable_All_DB_Constraints
Description	Enables all the constraints for a specified database residing on a given MS SQL server instance

3.4.24 MSSQL Enable Deadlock Tracing

Fixlet User Friendly Name	MSSQL_Enable_Deadlock_Tracing
Description	Activates and enables deadlock tracing on MS SQL Server

3.4.25 MSSQL Fetch DB IOPs Consumption

Fixlet User Friendly Name	MSSQL_Fetch_DB_IOPs_Consumption
Description	Retrieves and displays input-output consumption of all databases residing on a given MS SQL Server

3.4.26 MSSQL Grant BulkAdmin To Login

Fixlet User Friendly Name	MSSQL_Grant_BulkAdmin_To_Login
Description	Grants bulk admin role to a given user on a MS SQL instance

3.4.27 MSSQL Grant Login Roles

Fixlet User Friendly Name	MSSQL_Grant_Login_Roles
Description	Grants multiple roles to a given user. Role names need to be provided in a comma separated format

3.4.28 MSSQL Grant Read Write Permissions

Fixlet User Friendly Name	MSSQL_Grant_Read_Write_Permissions
Description	Provides read and write permissions to a given MS SQL user

3.4.29 MSSQL Index Management

Fixlet User Friendly Name	MSSQL_Index_Management
Description	Automatically analyzes and defragments indexes for index management of databases. Also rebuilds/reorganizes all indexes of the table.

3.4.30 MSSQL Latest Backup Check

Fixlet User Friendly Name	MSSQL_Latest_Backup_Check
Description	Checks for and displays last backup taken for given or all MS SQL servers

3.4.31 MSSQL Modify Compatibility Level

Fixlet User Friendly Name	MSSQL_Modify_Compatibility_Level
Description	Updates and modifies the compatibility number for the given MS SQL databases

3.4.32 MSSQL Monitor SQL Service Send Mail If Down

Fixlet User Friendly Name	MSSQL_Monitor_SQL_Service_Send_Mail_If_Down
Description	Allows for monitoring of MS SQL services and will send a mail if any of the services are found to not be working

3.4.33 MSSQL Remove Databases From Availability Group

Fixlet User Friendly Name	MSSQL_Remove_Databases_From_Availability_Group
Description	Removes/deletes a database from an availability group in MS SQL

3.4.34 MSSQL START STOP Service Agent

Fixlet User Friendly Name	MSSQL_START_STOP_Service_Agent
Description	Enables or disables MS SQL Services on the host server

3.4.35 MSSQL Update Statistics

Fixlet User Friendly Name	MSSQL_Update_Statistics
Description	Runs and executes a query to update the statistics for a given table or schema of a database

3.4.36 MSSQL Validate Backup File

Fixlet User Friendly Name	MSSQL_Validate_Backup_File
Description	Checks and validates the presence of a backup file for a given location on the MS SQL server

3.4.37 Oracle Add Members To Redo Log Group

Fixlet User Friendly Name	Oracle_Add_Members_To_Redo_Log_Group
Description	Adds members to redo log groups in the Oracle Database.

3.4.38 Oracle Add Parameters In ParamFile

Fixlet User Friendly Name	Oracle_Add_Paramaters_In_ParamFile
Description	Adds new parameters in the param file of the Oracle Database

3.4.39 Oracle Alter Profile

Fixlet User Friendly Name	Oracle_Alter_Profile
Description	Changes the value of a specified resource of a given profile in the Oracle Database

3.4.40 Oracle Assign Profile To User

Fixlet User Friendly Name	Oracle_Assign_Profile_To_User
Description	Assigns a specified profile to a given user in Oracle

3.4.41 Oracle Audit Data

Fixlet User Friendly Name	Oracle_Audit_Data
Description	Generates an audit data report in Oracle

3.4.42 Oracle Change Database Name

Fixlet User Friendly Name	Oracle_Change_Database_Name
Description	Changes/modifies the database name in Oracle.

3.4.43 Oracle Check Backup Status

Fixlet User Friendly Name	Oracle_Check_Backup_Status
Description	Checks the status of the back up of any given database in Oracle

3.4.44 Oracle Check Blocking Sessions

Fixlet User Friendly Name	Oracle_Check_Blocking_Sessions
Description	Lists details of any blocking sessions, if any, in Oracle.

3.4.45 Oracle Check Database Performance

Fixlet User Friendly Name	Oracle_Check_Database_Performance
Description	Checks and displays the Oracle Database performance in terms of CPU usage, memory usage, and wait events along with the status of the specified database

3.4.46 Oracle Check Database Status

Fixlet User Friendly Name	Oracle_Check_Database_Status
Description	Checks and displays the Oracle database mode/status

3.4.47 Oracle Check If Process Crossed Threshold

Fixlet User Friendly Name	Oracle_Check_If_Process_Crossed_Threshold
Description	Checks and displays any processes that are utilising more of the CPU than the defined threshold.

3.4.48 Oracle Check Listener Status

Fixlet User Friendly Name	Oracle_Check_Listener_Status
Description	Validates and displays Oracle listener status

3.4.49 Oracle Compile Invalid Function

Fixlet User Friendly Name	Oracle_Compile_Invalid_Function
Description	Compiles and lists all the invalid functions in a specified Oracle instance

3.4.50 Oracle Compile Invalid Procedure

Fixlet User Friendly Name	Oracle_Compile_Invalid_Procedure
Description	Compiles and lists all the invalid procedures in a specified Oracle instance

3.4.51 Oracle Create Common Role

Fixlet User Friendly Name	Oracle_Create_Common_Role
Description	Creates a common role inside a given container database of Oracle. It will also grant session access to the newly created role

3.4.52 Oracle Create Common User

Fixlet User Friendly Name	Oracle_Create_Common_User
Description	Creates a user on a specified container database in an Oracle instance. Also gives an option to create the user either for all the containers or for the current one.

3.4.53 Oracle Create Container Database

Fixlet User Friendly Name	Oracle_Create_Container_Database
Description	Creates a new container database in Oracle

3.4.54 Oracle Create Database

Fixlet User Friendly Name	Oracle_Create_Database
Description	Creates a new database in Oracle

3.4.55 Oracle Create Database Link

Fixlet User Friendly Name	Oracle_Create_Database_Link
Description	Creates a database link for a given user and database in Oracle

3.4.56 Oracle Create Datafile

Fixlet User Friendly Name	Oracle_Create_Datafile
Description	Creates a new datafile in Oracle

3.4.57 Oracle Create Directory

Fixlet User Friendly Name	Oracle_Create_Directory
Description	Creates a new directory for a database in Oracle

3.4.58 Oracle Create Guarantee Restore Point

Fixlet User Friendly Name	Oracle_Create_Guarantee_Restore_Point
Description	Creates a restore point for a database in Oracle

3.4.59 Oracle Create Index

Fixlet User Friendly Name	Oracle_Create_Index
Description	Creates a new index in Oracle

3.4.60 Oracle Create Listener

Fixlet User Friendly Name	Oracle_Create_Listener
Description	Creates a new listener in Oracle

3.4.61 Oracle Create Local Role

Fixlet User Friendly Name	Oracle_Create_Local_Role
Description	Creates a new local role inside a specified pluggable database/container of the container database in Oracle

3.4.62 Oracle Create Local User On PDB

Fixlet User Friendly Name	Oracle_Create_Local_User_On_PDB
Description	Creates a local user on a specified pluggable database. Requires the name of the pluggable database in Oracle to create the new user on that pluggable database in Oracle

3.4.63 Oracle Create Mview

Fixlet User Friendly Name	Oracle_Create_Mview
Description	Creates a materialised view in Oracle

3.4.64 Oracle Create Password File

Fixlet User Friendly Name	Oracle_Create_Password_File
Description	Creates a backup of an existing file and then creates a password file in Oracle

3.4.65 Oracle Create pfile

Fixlet User Friendly Name	Oracle_Create_pfile
Description	Creates a pfile on an Oracle database instance

3.4.66 Oracle Create Pluggable Database

Fixlet User Friendly Name	Oracle_Create_Pluggable Database
Description	Creates a new pluggable database in an Oracle Server

3.4.67 Oracle Create Profile

Fixlet User Friendly Name	Oracle_Create_Profile
Description	Creates a new profile with a specified name in an Oracle Database

3.4.68 Oracle Create Redo Log Group

Fixlet User Friendly Name	Oracle_Create_Redo_Log_Group
Description	Creates a new Redo log group on an Oracle Database

3.4.69 Oracle Create Refresh MatView

Fixlet User Friendly Name	Oracle_Create_Refresh_MatView
Description	Creates and refreshes a materialised view in Oracle

3.4.70 Oracle Create Role

Fixlet User Friendly Name	Oracle_Create_Role
Description	Creates a new role in an Oracle Database

3.4.71 Oracle Create spfile

Fixlet User Friendly Name	Oracle_Create_spfile
Description	Creates a new spfile on an Oracle database instance

3.4.72 Oracle Create Temp Tablespace

Fixlet User Friendly Name	Oracle_Create_Temp_Tablespace
---------------------------	-------------------------------

Description	Creates a new temporary tablespace of a given name and specified size in an Oracle Database
-------------	---

3.4.73 Oracle Create TNS Entry

Fixlet User Friendly Name	Oracle_Create_TNS_Entry
Description	Creates a new TNS Entry in an Oracle server

3.4.74 Oracle Create Undo Tablespace

Fixlet User Friendly Name	Oracle_Create_Undo_Tablespace
Description	Creates a new undo tablespace of a given name and of specific size in an Oracle Database. Also inserts a new datafile in the database

3.4.75 Oracle Datafile Addition Temp Tablespace

Fixlet User Friendly Name	Oracle_Datafile_Addition_Temp_Tablespace
Description	Adds a datafile to a tablespace in an Oracle Database

3.4.76 Oracle Datafile Move Diff Location

Fixlet User Friendly Name	Oracle_Datafile_Move_Diff_Location
Description	Moves a datafile to a difference location in an Oracle Database

3.4.77 Oracle Datafile Resize

Fixlet User Friendly Name	Oracle_Datafile_Resize
Description	Resizes a given datafile in Oracle

3.4.78 Oracle Disable Flashback

Fixlet User Friendly Name	Oracle_Disable_Flashback
Description	Disables flashbacks for a given database in Oracle

3.4.79 Oracle Drop Database

Fixlet User Friendly Name	Oracle_Drop_Database
Description	Drops/deletes a given database from the Oracle instance

3.4.80 Oracle Drop Database Link

Fixlet User Friendly Name	Oracle_Drop_Database_Link
Description	Drops/deletes a given database link from the Oracle instance

3.4.81 Oracle Drop Datafile Temp Tablespace

Fixlet User Friendly Name	Oracle_Drop_Datafile_Temp_Tablespace
Description	Drops/deletes a given datafile temporary tablespace from the Oracle instance

3.4.82 Oracle Drop Directory

Fixlet User Friendly Name	Oracle_Drop_Directory
Description	Drops/deletes a given directory from the Oracle instance

3.4.83 Oracle Drop Index

Fixlet User Friendly Name	Oracle_Drop_Index
Description	Drops/deletes a specified index from the Oracle database instance

3.4.84 Oracle Drop Member From Redo Log Group

Fixlet User Friendly Name	Oracle_Drop_Member_From_Redo_Log_Group
Description	Drops/deletes a specified member of a given log group identified by number in an Oracle Database

3.4.85 Oracle Drop Mview

Fixlet User Friendly Name	Oracle_Drop_Mview
Description	Drops/deletes a given materialized view from the Oracle instance

3.4.86 Oracle Drop PDB

Fixlet User Friendly Name	Oracle_Drop_Database
Description	Drops/deletes a given pluggable database from the Oracle instance

3.4.87 Oracle Drop Profile

Fixlet User Friendly Name	Oracle_Drop_Profile
Description	Drops/deletes a given profile from the Oracle instance

3.4.88 Oracle Drop Redo Log Group

Fixlet User Friendly Name	Oracle_Drop_Redo_Log_Group
Description	Drops/deletes a given Redo log group from the Oracle instance

3.4.89 Oracle Drop Restorepoint

Fixlet User Friendly Name	Oracle_Drop_Restorepoint
Description	Drops/deletes a given restore point from the Oracle instance

3.4.90 Oracle Drop Role

Fixlet User Friendly Name	Oracle_Drop_Role
Description	Drops/deletes a given role from the Oracle instance

3.4.91 Oracle Drop Tablespace

Fixlet User Friendly Name	Oracle_Drop_Tablespace
Description	Drops/deletes a specified tablespace from the Oracle instance

3.4.92 Oracle Enable Archivelog Mode

Fixlet User Friendly Name	Oracle_Enable_Archivelog_Mode
Description	Enables archive log on an Oracle instance

3.4.93 Oracle Enable Flashback

Fixlet User Friendly Name	Oracle_Enable_Flashback
Description	Enables flashback for a specified database in Oracle

3.4.94 Oracle Export Fulldatabase

Fixlet User Friendly Name	Oracle_Export_Fulldatabase
---------------------------	----------------------------

Description	Exports a full database from the Oracle instance
-------------	--

3.4.95 Oracle Export Schema

Fixlet User Friendly Name	Oracle_Export_Schema
Description	Exports schema on an Oracle instance

3.4.96 Oracle Export Table

Fixlet User Friendly Name	Oracle_Export_Table
Description	Exports a specified list of tables to a given directory from the Oracle distance instance

3.4.97 Oracle Gather Stats

Fixlet User Friendly Name	Oracle_Gather_Stats
Description	Gathers statistics for an Oracle Database

3.4.98 Oracle Generate ADDM Report

Fixlet User Friendly Name	Oracle_Generate_ADDM_Report
Description	Creates an ADDM report in Oracle

3.4.99 Oracle Generate AWR Report

Fixlet User Friendly Name	Oracle_Generate_AWR_Report
Description	Creates an AWR report in Oracle in HTML format

3.4.100 Oracle Grant Permission To User On Table

Fixlet User Friendly Name	Oracle_Grant_Permission_To_User_On_Table
Description	Gives mentioned permissions for a table to a user in Oracle

3.4.101 Oracle Grant System Permission

Fixlet User Friendly Name	Oracle_Gather_Stats
Description	Grants mentioned permissions to a given user for a system in Oracle.

3.4.102 Oracle Home Cleanup

Fixlet User Friendly Name	Oracle_Home_Cleanup
Description	Performs clean up on a home directory by removing log and trace files older than one week in Oracle

3.4.103 Oracle Import Table

Fixlet User Friendly Name	Oracle_Import_Table
Description	Imports a specified comma separated list of tables from the given DBF file and on a given Directory of Oracle database

3.4.104 Oracle Increase FRA Size

Fixlet User Friendly Name	Oracle_Increase_FRA_Size
Description	Modifies or increases the FRA file size in an Oracle database

3.4.105 Oracle Kill User Session

Fixlet User Friendly Name	Oracle_Kill_User_Session
Description	Kills a particular session of an Oracle user or all the inactive sessions of a given user

3.4.106 Oracle List Top CPU Utilizing Process

Fixlet User Friendly Name	Oracle_List_Top_CPU_Utilizing_Process
Description	Lists the top CPU utilizing processes of Oracle

3.4.107 Oracle List Top Memory Utilizing Process

Fixlet User Friendly Name	Oracle_List_Top_Memory_Utilizing_Process
Description	Lists the top memory utilizing processes of Oracle

3.4.108 Oracle List Top Wait Events

Fixlet User Friendly Name	Oracle_List_Top_Wait_Events
Description	Lists the top wait events of Oracle

3.4.109 Oracle Lock User

Fixlet User Friendly Name	Oracle_List_Top_CPU_Utilizing_Process
Description	Locks/blocks a given Oracle User

3.4.110 Oracle Memory Advisor

Fixlet User Friendly Name	Oracle_Memory_Advisor
Description	When executed, issues a memory advisory on whether any additional memory allocation is required for a specified database of a given Oracle instance to ensure stable operations.

3.4.111 Oracle Memory Hit Ratio

Fixlet User Friendly Name	Oracle_Memory_Hit_Ratio
Description	Fetches and displays memory hit ratio in Oracle

3.4.112 Oracle Monitor Open Cursor

Fixlet User Friendly Name	Oracle_Monitor_Open_Cursor
Description	Checks open cursor in Oracle

3.4.113 Oracle Move Object

Fixlet User Friendly Name	Oracle_Move_Object
Description	Moves an object from one tablespace to another in Oracle

3.4.114 Oracle Perform HealthCheck

Fixlet User Friendly Name	Oracle_Perform_HealthCheck
Description	Performs a health check on the Oracle server

3.4.115 Oracle Put In No Archive Mode

Fixlet User Friendly Name	Oracle_Put_In_No_Archive_Mode
Description	Disables archive mode for a given Oracle database instance

3.4.116 Oracle Quota On Tablespace

Fixlet User Friendly Name	Oracle_Quota_On_Tablespace
Description	Allocates/alters the quota on a tablespace in Oracle

3.4.117 Oracle Rebuild Index

Fixlet User Friendly Name	Oracle_Rebuild_Index
Description	Rebuilds a specific index or all indexes of a given table

3.4.118 Oracle Rebuild Invalid Indexes

Fixlet User Friendly Name	Oracle_Rebuild_Invalid_Indexes
Description	Rebuilds all unusable/invalid indexes of a given database in Oracle

3.4.119 Oracle Relocate FRA File

Fixlet User Friendly Name	Oracle_Relocate_FRA_File
Description	Relocates the FRA file to a different location, specified by the user, in Oracle

3.4.120 Oracle Remove Or Modify Parameter In Paramfile

Fixlet User Friendly Name	Oracle_Remove_Or_Modify_Parameter_In_Paramfile
Description	Removes or modifies a specified parameter in the parameter file of Oracle

3.4.121 Oracle Reorganize Table

Fixlet User Friendly Name	Oracle_Reorganize_Table
Description	Reorganizes a specified table in Oracle by rebuilding its indexes moving it to a different tablespace if needed.

3.4.122 Oracle Reset Password

Fixlet User Friendly Name	Oracle_Reset_Password
Description	Resets the password of a given Oracle user

3.4.123 Oracle Restore Database From Restore Point

Fixlet User Friendly Name	Oracle_Restore_Database_From_Restore_Point
Description	Triggers a flashback restore that restores a specified restore point of the Oracle database

3.4.124 Oracle Revoke Permission From User On Table

Fixlet User Friendly Name	Oracle_Revoke_Permission_From_User_On_Table
Description	Revokes a specified permission from the user against a table in Oracle

3.4.125 Oracle Revoke System Permission

Fixlet User Friendly Name	Oracle_Revoke_System_Permission
Description	Revokes a specified system permission from the user in Oracle

3.4.126 Oracle RMAN Backup Restore

Fixlet User Friendly Name	Oracle_RMAN_Backup_Restore
Description	Restores the backup taken by the RMAN utility on the same Oracle Server

3.4.127 Oracle Run Adhoc Script

Fixlet User Friendly Name	Oracle_Run_Adhoc_Script
Description	Executes an adhoc script supplied as an attachment in the ticket

3.4.128 Oracle Shutdown Database

Fixlet User Friendly Name	Oracle_Shutdown_Database
Description	Shuts down an Oracle Database

3.4.129 Oracle Start CDB

Fixlet User Friendly Name	Oracle_Start_CDB
Description	Starts up a specified container database CDB in Oracle

3.4.130 Oracle Start Database

Fixlet User Friendly Name	Oracle_Start_Database
Description	Starts up the Oracle database using the startup command in Oracle Server

3.4.131 Oracle Start Listener

Fixlet User Friendly Name	Oracle_Start_Listener
Description	Starts the Oracle Listener

3.4.132 Oracle Start Pluggable Database

Fixlet User Friendly Name	Oracle_Start_Pluggable_Database
Description	Starts the pluggable Database in Oracle

3.4.133 Oracle Stop CDB

Fixlet User Friendly Name	Oracle_Stop_CDB
Description	Stops a specified container database CDB in Oracle

3.4.134 Oracle Stop Listener

Fixlet User Friendly Name	Oracle_Stop_Listener
Description	Stops the Oracle Listener

3.4.135 Oracle Stop Pluggable Database

Fixlet User Friendly Name	Oracle_Stop_Pluggable_Database
Description	Stops a specified pluggable database in Oracle

3.4.136 Oracle Take Backup Via RMAN

Fixlet User Friendly Name	Oracle_Take_Backup_Via_RMAN
Description	Takes the backup of a given database in Oracle using RMAN utility on a given mount point

3.4.137 Oracle Unlock User

Fixlet User Friendly Name	Oracle_Unlock_User
Description	Unlocks/activates an existing Oracle user

3.4.138 Oracle Unplug PDB

Fixlet User Friendly Name	Oracle_Unplug_PDB
Description	Unplugs and drops/deletes a Pluggable database

3.4.139 Oracle User Creation

Fixlet User Friendly Name	Oracle_User_Creation
Description	Creates a new user in Oracle with a specified name and profile. If profile name is not provided, then the default profile is attached to the user

3.4.140 Oracle Utlrp Script

Fixlet User Friendly Name	Oracle_Ultrlp_Script
Description	Compiles and lists all invalid objects for an Oracle Database instance.

3.4.141 PostGres Alter Group

Fixlet User Friendly Name	PostGres_Alter_Group
Description	Renames/alters group name or members in PostgreSQL

3.4.142 PostGres Alter PolicyName

Fixlet User Friendly Name	PostGres_Alter_Group
Description	Renames/alters a specified policy in PostgreSQL

3.4.143 PostGres Analyzer

Fixlet User Friendly Name	PostGres_Analyzer
Description	Executes an analysis operation against a specified object in PostgreSQL like a database, table, schema, etc.

3.4.144 PostGres Change Data Directory

Fixlet User Friendly Name	PostGres_Change_Data_Directory
Description	Changes data directory for a given PostgreSQL instance

3.4.145 PostGres Change Data Wal Directory

Fixlet User Friendly Name	PostGres_Change_Data_Wal_Directory
Description	Changes data and wal directory for a given PostgreSQL instance

3.4.146 PostGres Configure PEM Agent

Fixlet User Friendly Name	PostGres_Configure_PEM_Agent
Description	Executes the agent configuration of PostgreSQL EDB PEM Agent and then restarts the agent service

3.4.147 PostGres CPU Consumption By Postgres

Fixlet User Friendly Name	PostGres_CPU_Consumption_By_Postgres
Description	Checks the CPU usage by PostgreSQL processes on the host server

3.4.148 PostGres Create DB

Fixlet User Friendly Name	PostGres_Create_DB
Description	Creates a new database on a given PostgreSQL instance with the name specified by the user

3.4.149 PostGres Create Group

Fixlet User Friendly Name	PostGres_Create_Group
Description	Creates a new group on a given PostgreSQL instance

3.4.150 PostGres Create Index

Fixlet User Friendly Name	PostGres_Create_Index
Description	Creates a new index corresponding to a specified column of a given table for a given PostgreSQL database

3.4.151 PostGres Create Policy

Fixlet User Friendly Name	PostGres_Create_Policy
Description	Creates a new policy in PostgreSQL

3.4.152 PostGres Create Role

Fixlet User Friendly Name	PostGres_Create_Role
Description	Creates a new role on a given PostgreSQL instance

3.4.153 PostGres Create Schema

Fixlet User Friendly Name	PostGres_Create_Schema
Description	Creates a new schema on a given PostgreSQL instance and grants authority of the same to a specified user

3.4.154 PostGres Create Tablespace

Fixlet User Friendly Name	PostGres_Create_Tablespace
Description	Creates a new tablespace at a specified location on a given PostgreSQL instance

3.4.155 PostGres Create User With DB Access

Fixlet User Friendly Name	PostGres_Create_User_With_DB_Access
Description	Playbook creates a new user in the PostgreSQL instance and grants the basic privileges of DB access. A randomly generated password is also sent on mail.

3.4.156 PostGres Create View

Fixlet User Friendly Name	PostGres_Create_View
Description	Creates a view for a given table in a PostgreSQL instance

3.4.157 PostGres Delete Policy

Fixlet User Friendly Name	PostGres_Delete_Policy
Description	Deletes a given policy from the PostgreSQL instance

3.4.158 PostGres Drop Cluster

Fixlet User Friendly Name	PostGres_Drop_Cluster
Description	Drops/deletes PostgreSQL instances from a server by uninstalling Postgre packages

3.4.159 PostGres Drop Database

Fixlet User Friendly Name	PostGres_Drop_Database
Description	Drops/deletes a given database from a PostgreSQL instance

3.4.160 PostGres Drop Group

Fixlet User Friendly Name	PostGres_Drop_Group
Description	Drops/deletes a specified from a PostgreSQL instance

3.4.161 PostGres Drop Index

Fixlet User Friendly Name	PostGres_Drop_Index
Description	Drops/deletes a given index from a PostgreSQL instance

3.4.162 PostGres Drop Role

Fixlet User Friendly Name	PostGres_Drop_Role
Description	Drops/deletes a specified role from a PostgreSQL instance

3.4.163 PostGres Drop Schema

Fixlet User Friendly Name	PostGres_Drop_Schema
Description	Drops/deletes a given schema from a specified database in a PostgreSQL instance

3.4.164 PostGres Drop Tablespace

Fixlet User Friendly Name	PostGres_Drop_Tablespace
Description	Drops/deletes a given tablespace from a PostgreSQL instance

3.4.165 PostGres Drop User

Fixlet User Friendly Name	PostGres_Drop_User
Description	Drops/deletes a given user from a PostgreSQL instance

3.4.166 PostGres Drop View

Fixlet User Friendly Name	PostGres_Drop_View
Description	Drops/deletes a specified view for a given table and database from a PostgreSQL instance

3.4.167 PostGres Extract Bloating Report

Fixlet User Friendly Name	PostGres_Extract_Bloating_Report
Description	Extracts and fetches the bloating report for the PostgreSQL instance of a given database

3.4.168 PostGres Grant Permission To User

Fixlet User Friendly Name	PostGres_Grant_Permission_To_User
Description	Grants a user the specified permissions for a given schema in a PostgreSQL instance

3.4.169 PostGres Install EDB Bart

Fixlet User Friendly Name	PostGres_Install_EDB_Bart
Description	Installs and deploys the Postgres enterprise database Bart on a specified RHEL server of version-7.

3.4.170 PostGres Install EDB EFM Agent

Fixlet User Friendly Name	PostGres_Install_EDB_EFM_Agent
Description	Installs and deploys the PostgreSQL EDB EFM Agent on the RHEL 7 machine.

3.4.171 PostGres Install EDB PEM

Fixlet User Friendly Name	PostGres_Install_EDB_Bart
Description	Installs and deploys the enterprise database Postgres Enterprise Manager on a specified RHEL server of version-8 and above

3.4.172 PostGres Install EDB PGBouncer

Fixlet User Friendly Name	PostGres_Install_EDB_PGBouncer
Description	Installs and deploys EDB PGBouncer on the RHEL 7 machine

3.4.173 PostGres Install PEM Agent

Fixlet User Friendly Name	PostGres_Install_PEM_Agent
Description	Installs and deploys the Postgres Enterprise Manager agent package on a specified RHEL 7 server version only.

3.4.174 PostGres Install Postgres DB

Fixlet User Friendly Name	PostGres_Install_Postgres_DB
Description	Installs and deploys Postgres on a RHEL server.

3.4.175 PostGres Install Witness Server

Fixlet User Friendly Name	PostGres_Install_Witness_Server
Description	Installs the EFM and EDB Advanced server version 11 and EDB Advanced server client along with JDK package in order to make the specified server as a witness server when required for the primary instance of PostgreSQL cluster.

3.4.176 PostGres List Running Queries

Fixlet User Friendly Name	PostGres_List_Running_Queries
Description	Fetches and lists on running queries in a PostgreSQL instance

3.4.177 PostGres Memory Consumption By Postgres

Fixlet User Friendly Name	PostGres_Memory_Consumption_By_Postgres
Description	Checks and validates the memory usage by PostgreSQL processes on the host server

3.4.178 PostGres Perform Disaster Recovery

Fixlet User Friendly Name	PostGres_Perform_Disaster_Recovery
---------------------------	------------------------------------

Description	Will perform a disaster recovery between two nodes of a PostgreSQL Database
-------------	---

3.4.179 PostGres Perform Failover

Fixlet User Friendly Name	PostGres_Perform_Failover
Description	Will perform the failover from a secondary server to the primary server in PostgreSQL

3.4.180 PostGres Perform Physical Restore

Fixlet User Friendly Name	PostGres_Perform_Physical_Restore
Description	Executes physical restore on a secondary PostgreSQL server from a specified primary instance of PostgreSQL

3.4.181 PostGres Perform Streaming Replication

Fixlet User Friendly Name	PostGres_Perform_Streaming_Replication
Description	Will perform the enablement of streaming replication between two servers of the PostgreSQL database

3.4.182 PostGres Perform Vacuum

Fixlet User Friendly Name	PostGres_Perform_Vacuum
Description	Performs the vacuum operation in PostgreSQL on a given database, schema or table and a specified set of columns.

3.4.183 PostGres Reindex

Fixlet User Friendly Name	PostGres_Reindex
Description	Performs the reindexing for a table or a database in PostgreSQL

3.4.184 PostGres Rename View

Fixlet User Friendly Name	PostGres_Rename_View
Description	Renames the view for a given table in PostgreSQL

3.4.185 PostGres Restart Service

Fixlet User Friendly Name	PostGres_Restart_Service
Description	Restarts the PostgreSQL database service for version 10

3.4.186 PostGres Restore Full Database

Fixlet User Friendly Name	PostGres_Restore_Full_Database
Description	Restores a specified database from a file in PostgreSQL

3.4.187 PostGres Restore Shema

Fixlet User Friendly Name	PostGres_Restore_Schema
Description	Restores the specified schema from its backup file in a given database in PostgreSQL

3.4.188 PostGres Restore Table

Fixlet User Friendly Name	PostGres_Restore_Table
Description	Restores a specified table from its backup in a given database in PostgreSQL

3.4.189 PostGres Revoke Table Access

Fixlet User Friendly Name	PostGres_Revoke_Table_Access
Description	Revokes permissions from a user for a table access in PostgreSQL

3.4.190 PostGres Start EDB EFM Agent

Fixlet User Friendly Name	PostGres_Start_EDB_EFM_Agent
Description	Starts the EDB failover manager agent of a specified version on a given PostgreSQL server.

3.4.191 PostGres Start PEM Agent

Fixlet User Friendly Name	PostGres_Start_PEM_Agent
Description	Starts the PEM agent service on a specified PostgreSQL server.

3.4.192 PostGres Start Service

Fixlet User Friendly Name	PostGres_Start_Service
Description	Starts the PostgreSQL service on the server hosting the PostgreSQL instance.

3.4.193 PostGres Stop EDB EFM Agent

Fixlet User Friendly Name	PostGres_Stop_EDB_EFM_Agent
Description	Stops the EDB failover manager agent of a specified version on a given PostgreSQL server.

3.4.194 PostGres Stop PEM Agent

Fixlet User Friendly Name	PostGres_Stop_PEM_Agent
Description	Stops the PEM agent service on a specified PostgreSQL server.

3.4.195 PostGres Stop Service

Fixlet User Friendly Name	PostGres_Stop_Service
Description	Stops the PostgreSQL service on the server hosting the PostgreSQL instance.

3.4.196 PostGres Take Logical Backup

Fixlet User Friendly Name	PostGres_Take_Logical_Backup
Description	Carries out the logical backup against the whole PostgreSQL cluster or a specified database, or a given schema or a particular table in various modes. Performs the backup of the given resource.

3.4.197 PostGres Take Physical Backup

Fixlet User Friendly Name	PostGres_Take_Physical_Backup
Description	Takes a physical backup of the database in PostgreSQL using pg_basebackup utility

3.4.198 PostGres Update Config Parameter

Fixlet User Friendly Name	PostGres_Update_Config_Parameter
Description	Updates the value of a specified config parameter in PostgreSQL

3.4.199 PostGres Update HBA Config

Fixlet User Friendly Name	PostGres_Update_HBA_Config
Description	Updates the PostgreSQL HBA config file with user, database, types etc parameter values.

3.5 Network Management

3.5.1 Enable DHCP Tracing

Fixlet User Friendly Name	Network_Dhcp_Tracing_Enable
Description	Enables DHCP tracing.

3.5.2 DNS Server Diagnostics

Fixlet User Friendly Name	Network_DNS_Server_Diagnostics
Description	Adds DNS Feature and then fetches DNS server diagnostics. Also enables DNS diagnostics.

4 Onboarding of Fixlets on Bigfix Instance

This section describes the procedure to onboard reusable and out of the box fixlets on the Bigfix instance.

4.1 Prerequisites

Some of the pre-requisites before proceeding with the onboarding of fixlets are as follows –

- Bigfix application server version “10.0.8.37” must be installed
- Bigfix plugin service must be configured
- Bigfix REST API must be configured
- Bigfix REST API URL (https) must be reachable from BigFix Runbook AI server. Port 52311 (TCP/UDP) must be available.
- The communication from the Root server to the AI Runbook Tool works on UDP (52311) and AI Runbook tool to Root server works on TCP (52311) respectively.

4.2 Creation of Bigfix Operator

This section describes the procedure to create a Bigfix Operator on the console.

1. Go to **Tools** and click on **Create Operator**.

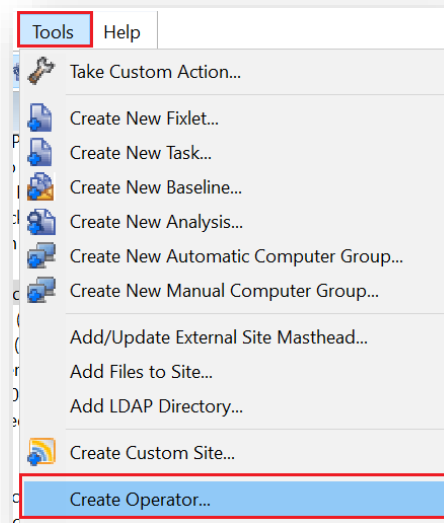


Figure 2 – Create Operator

2. Provide the **Username** and **Password**. The username for reference can be “**usr**”.

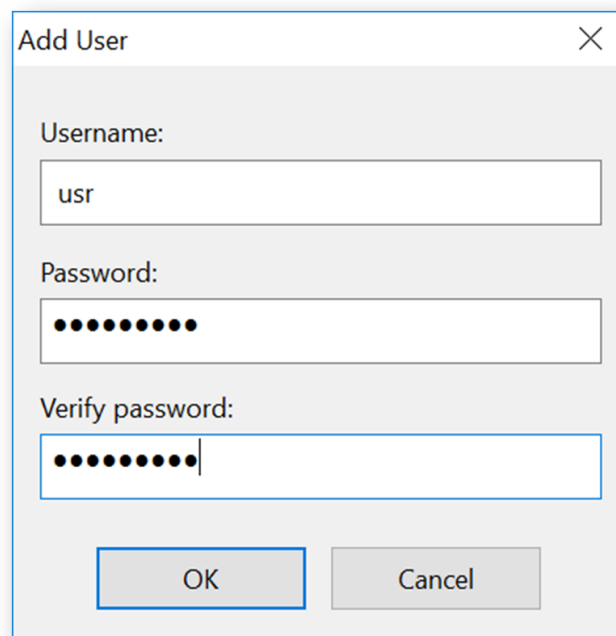
A screenshot of the 'Add User' dialog box. The dialog has a title bar with 'Add User' and a close button. It contains three input fields: 'Username:' with the text 'usr', 'Password:' with ten black dots, and 'Verify password:' with ten black dots and a cursor. At the bottom, there are 'OK' and 'Cancel' buttons.

Figure 3 – Create Operator – Username and Password

3. Click **OK** to proceed forward.
4. Under the Details tab, select the **Explicit Permissions** against **Master Operator** as **No**.

User Type	Local Console Operator	
Last Login Time	3/29/2023 2:21:07 PM	
Access Restriction	<input checked="" type="radio"/> Always allow this user to log in.	
	<input type="radio"/> Only allow this user to log in when they are a member of at least one r	
	<input type="radio"/> Disable this user's login.	
Permissions		
	Explicit Permissions	Effective Permissions
Master Operator	No ▾	Yes
Show Other Operators' Actions	No ▾	Yes
Stop Other Operators' Actions	No ▾	Yes
Can Create Actions	Yes ▾	Yes
Can Lock	No ▾	Yes

Figure 4 – Create Operator – Set Master Operator Permissions

Can Lock	No ▾	Yes
Can Send Refresh to Multiple Computers	No ▾	Yes
Can Submit Queries	No ▾	Yes
Custom Content	No ▾	Yes
Unmanaged Assets	Show None ▾	Show All

Restart and Shutdown [?]		
	Explicit Permissions	Effective Permissions
Post-Action Behavior	None ▾	Allow Restart and Shutdown
Action Script Commands	None ▾	Allow Restart and Shutdown

Figure 5 – Create Operator – Set Master Operator Permissions

Interface Login Privileges		
	Explicit Permissions	Effective Permissions
Can use Console	No ▾	Yes
Can use WebUI	No ▾	Yes
Can use REST API	Yes ▾	Yes

Figure 6 – Create Operator – Set Master Operator Permissions

- Under each of the tab, select the appropriate options as per your requirements.

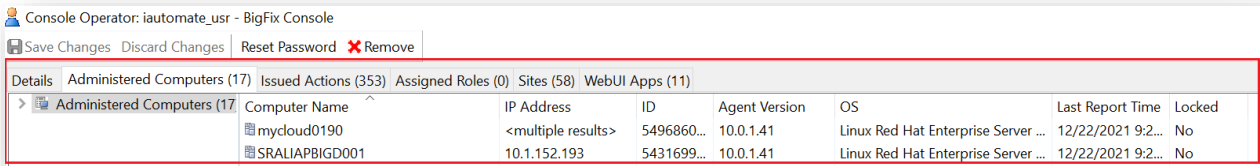


Figure 6 – Create Operator – Select Options

6. Once done, go to the option **Operator** to validate the creation of the operator.

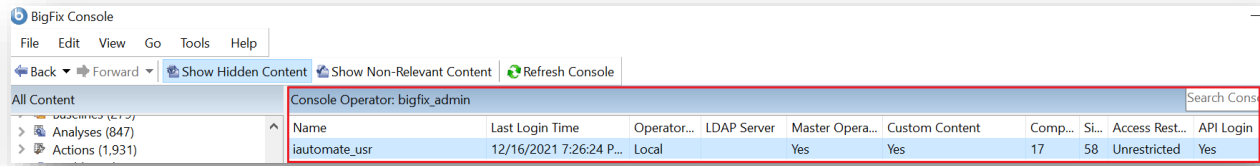


Figure 7 – Create Operator – Validate the created operator

7. Now, select the **Operator**, right click on it, and select **Open**.

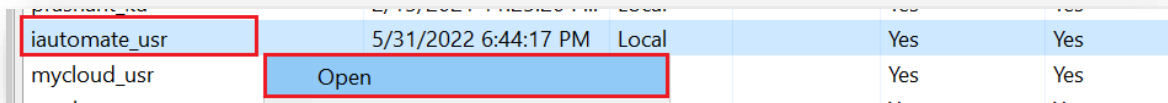


Figure 8 – Subscribing the Computers

8. Click on the tab named **Computer Assignment**, for subscribing the computers / end points.

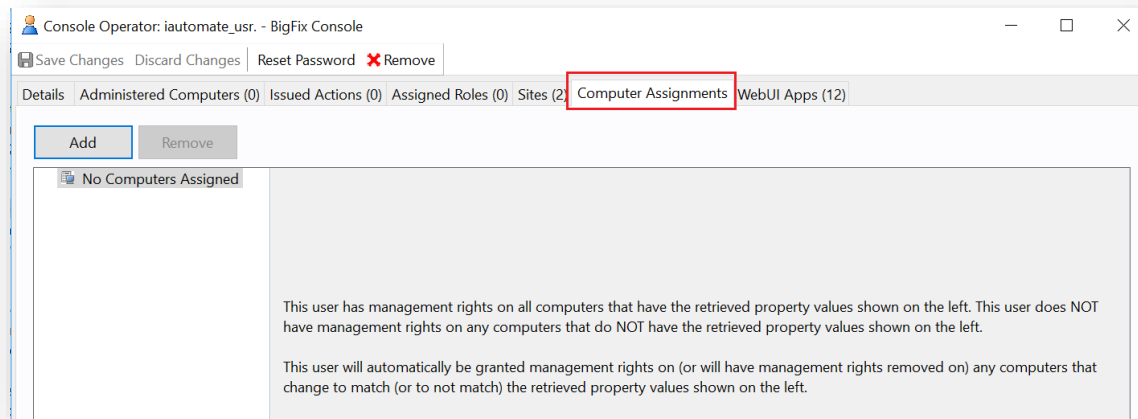


Figure 9 – Subscribing the Computers (cont.)

9. Click **Add**.

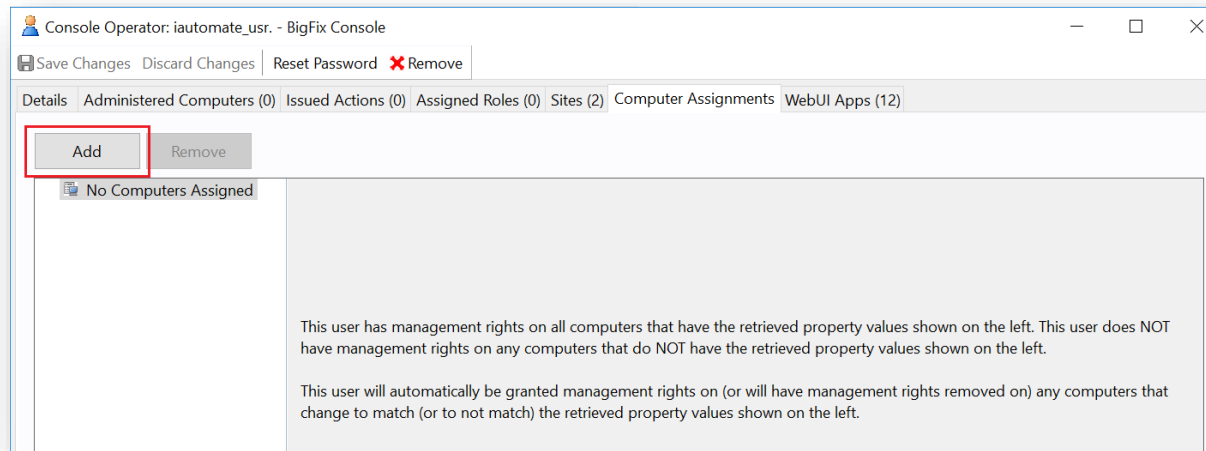


Figure 10 – Subscribing the Computers (cont.)

10. Select **All Computers** to subscribe all the end points as per the environment. You may also expand All Computers to select a subset of end points as well.

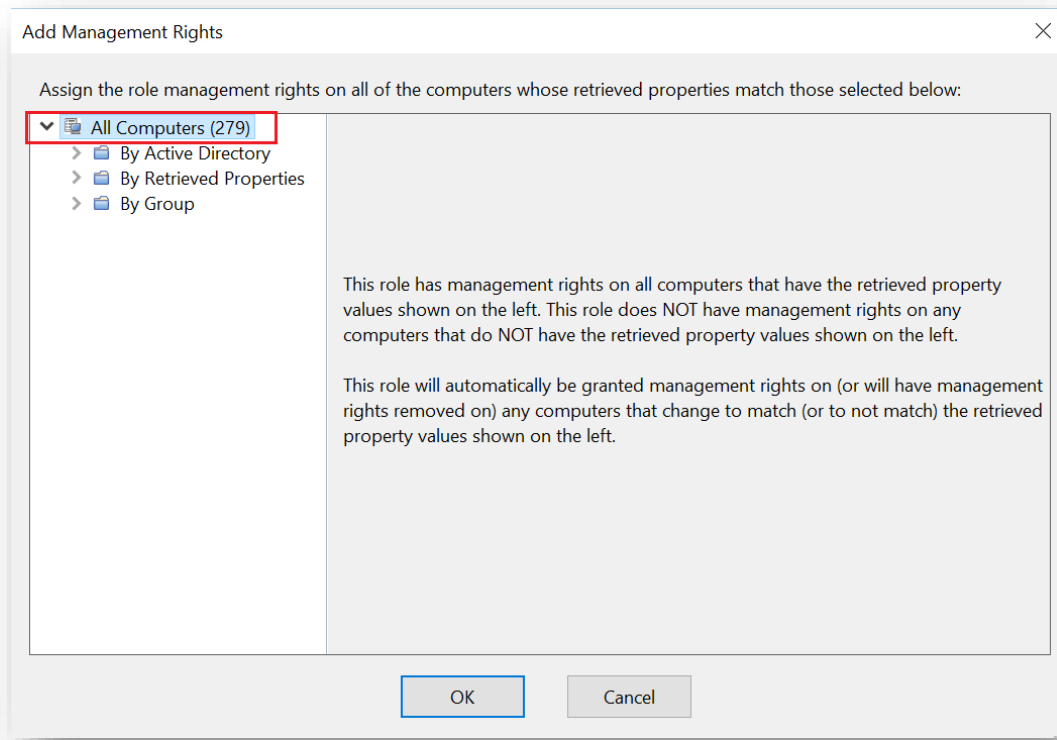


Figure 11 – Subscribing the Computers (cont.)

11. Click **Save Changes**.

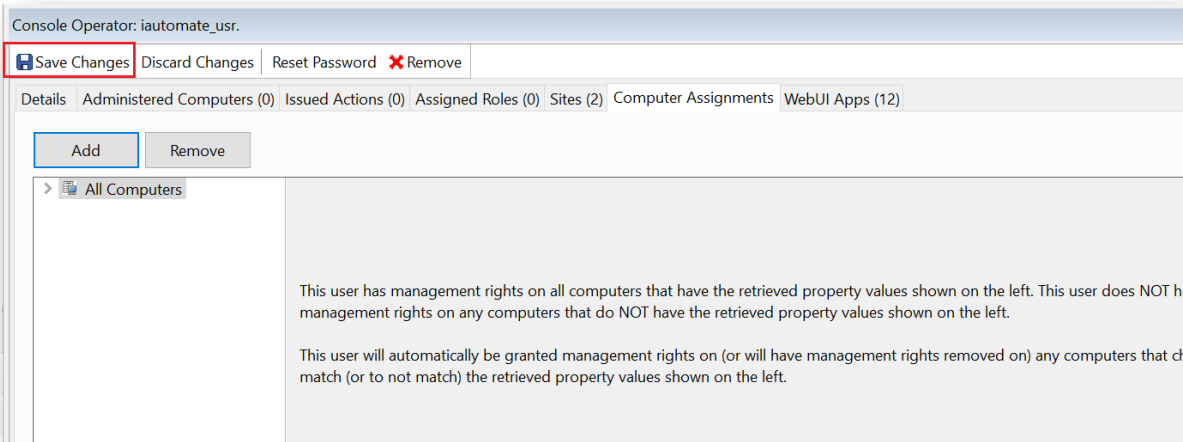


Figure 12 – Subscribing the Computers (cont.)

Now, all the computers in the environment will be subscribed as highlighted in the below screenshot.

Operators						
Name	Last Login Time	Operator...	LDAP Server	Master Opera...	Custom Content	Computers
iautomate_usr	6/1/2022 12:11:12 PM	Local		Yes	Yes	279

Figure 13 – Subscribing the Computers (cont.)

4.3 Creation of Bigfix Custom Site

This section describes the procedure to create a custom site on BigFix for BigFix Runbook AI. To hold our Runbooks as of right now, we will use a custom site. However, after the product is live, the site will be an external website. Thus, this part can be skipped once the product is live.

1. Go to the option **Tools** and select the option **Create Custom Site**.

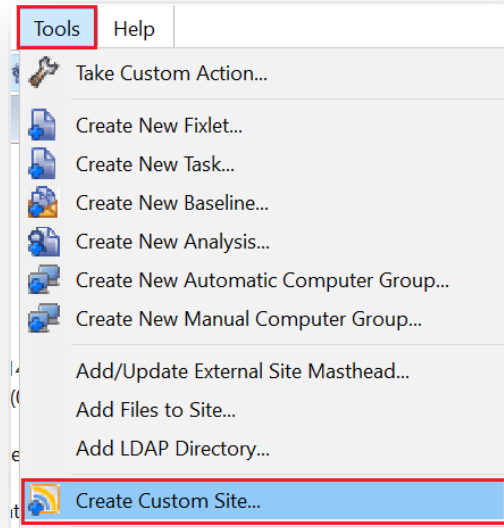


Figure 14 – Create Custom Site

2. Provide a name for the custom site, e.g., **iautomate**.

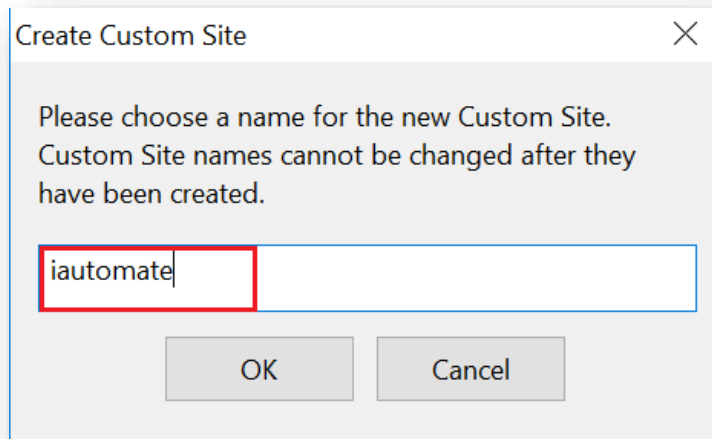


Figure 15 – Create Custom Site (cont.)

3. Click OK. The custom site will be created and visible under the section as depicted below.

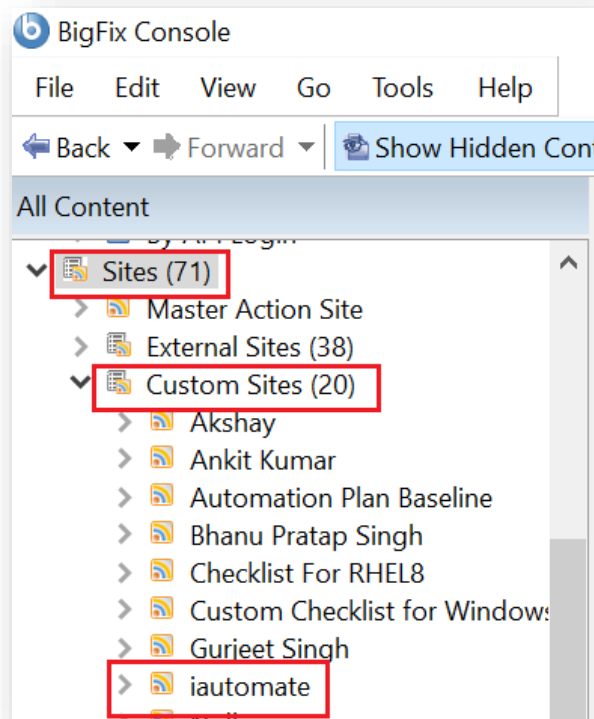


Figure 16 – Create Custom Site (cont.)

4.4 Importing Bigfix Fixlets

This section describes the procedure to import reusable and out of the box fixlets on the Bigfix instance.

1. Click **File** and select the option **Import**.

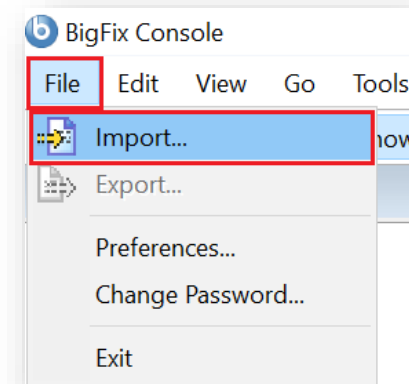


Figure 17 – Import Fixlets

This option is applicable for importing the fixlets which are available out of the box.

2. Navigate to the location where the file is saved in ***.bes** format. Select the file and click **Open** to start the import process.

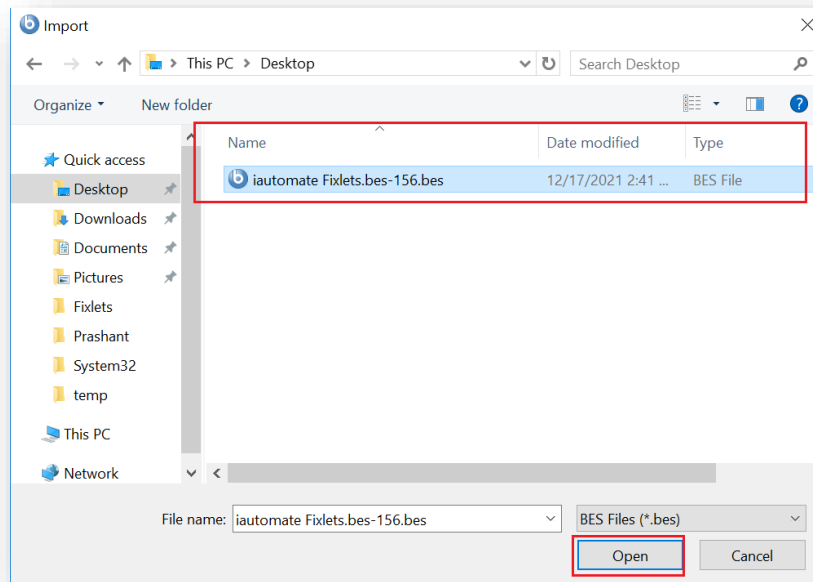


Figure 18 – Import Fixlets (cont.)

The out of the box fixlets are available along with the BigFix Runbook AI package in the location - DRYiCE_iAutomate_v6.1\DRYiCE_iAutomate_6.1_win\Bigfix Fixlet Repository\iAutomate_BigFix_156_usecases.bes

3. Select the site created earlier, e.g. **iautomate**, where these fixlets will be saved in the Bigfix console.

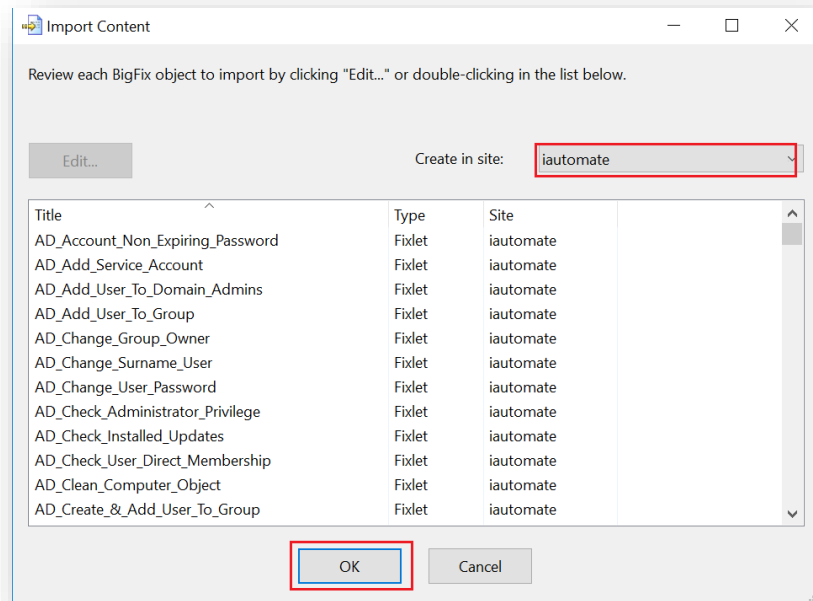


Figure 19 – Import Fixlets (cont.)

4. Click on **Sites** -> **Custom Sites** -> **iautomate** to validate the imported fixlets. All the fixlets will be visible under the iautomate site.

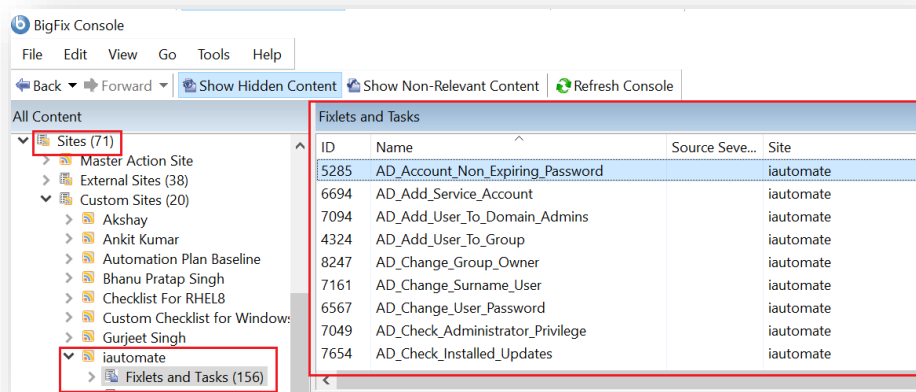


Figure 20 – Import Fixlets (cont.)

Once the files are uploaded, please proceed towards integrating the iAutomate instance with the Bigfix instance. Detailed Steps are available in the **Integration Guide -> Integration with RBA / Orchestrator Tools -> Integration with Bigfix.**

5 Configuring and Managing the Fixlets on BigFix Runbook AI instance

For configuring and managing the runbooks /fixlets on to the BigFix Runbook AI instance, there is a provision to bulk upload the fixlets using an excel file which is made available along with the BigFix Runbook AI package.

For bulk upload the detailed steps in are mentioned in the **Configuration Guide -> Configure iAutomate -> Runbooks -> Manage Runbooks -> Upload Spreadsheet to Configure Multiple Runbooks.**

The out of the box fixlets and the metadata are available along with the Product package in the location - DRYiCE_iAutomate_v6.1\DRYiCE_iAutomate_6.1_win\Bigfix Fixlet Repository\iAutomate_BigFix_156_usecases.xlsx

6 Appendix

Table 2 List of Abbreviations

Abbreviation	Expansion
AD	Active Directory
AI	Artificial Intelligence
ITOPS	IT Operations
ITSMS	IT Service Management System
KEDB	Known Error Database
SNOW	ServiceNow