

BigFix
RBI Compliance Scheduler User Guide



Special notice

Before using this information and the product it supports, read the information in [Notices \(on page 14\)](#).

Edition notice

This edition applies to BigFix version 11 and to all subsequent releases and modifications until otherwise indicated in new editions.

Contents

Chapter 1. Enable the Scheduler in the SCM Reporting site.....	5
Chapter 2. RBI Scheduler Fixlets and Tasks.....	6
Chapter 3. Debugging and Diagnostics.....	10
Chapter 4. RBI Scheduler Analysis.....	12
Chapter 5. Support.....	13
Chapter 6. Notices.....	14
Notices.....	xviii

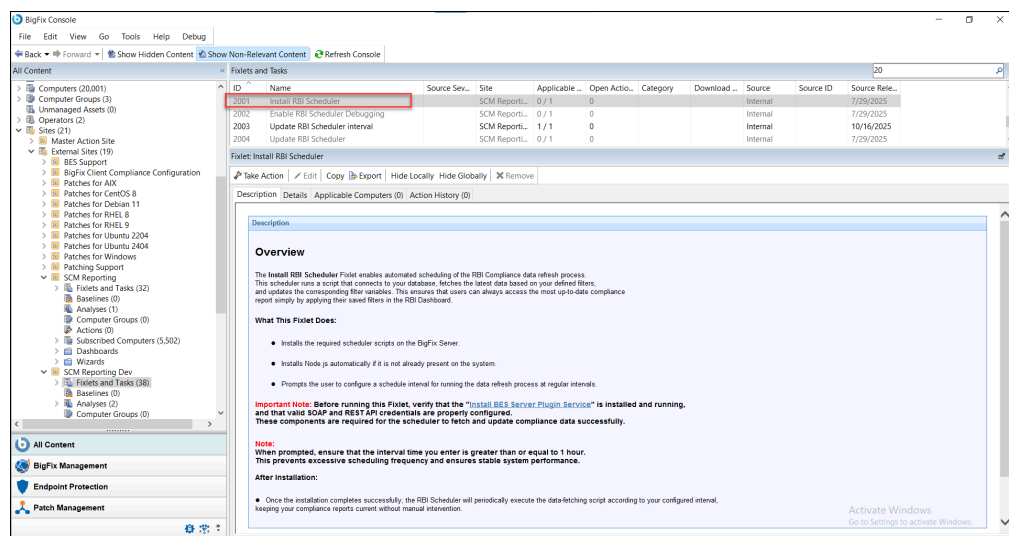
Chapter 1. Enable the Scheduler in the SCM Reporting site

Discover how to enable the scheduler in SCM Reporting site in BigFix Console to make compliance content available for RBI reporting.

To enable the scheduler in Security Compliance Manager (SCM) Reporting site:

1. Open the **BigFix Console** and navigate to the **License Overview Dashboard**.
2. Locate the **SCM Reporting** site under the **External Sites**.
3. Click **Enable Site** to activate access for your environment.
4. Ensure that the relevant **computers or operators** are subscribed to the site.
5. Select the appropriate **RBI Scheduler Fixlet and Task** and **Take action** to configure the automation based on the your requirements.

Figure 1. RBI Scheduler Fixlet and Task



Chapter 2. RBI Scheduler Fixlets and Tasks

Learn how the scheduler is managed through a set of **Fixlets** and **Tasks** that handle installation, configuration, updating, debugging, and uninstall.

The following Fixlets and Tasks are used to manage the installation, maintenance, and frequency of the RBI Scheduler.

Install RBI Scheduler

Purpose

The *Install RBI Scheduler* Fixlet enables automated scheduling of the RBI Compliance data refresh process. This scheduler runs a script that connects to your database, fetches the latest data based on your defined filters, and updates the corresponding filter variables. This ensures that users can always access the most up-to-date compliance report simply by applying their saved filters in the RBI report.

Functionality

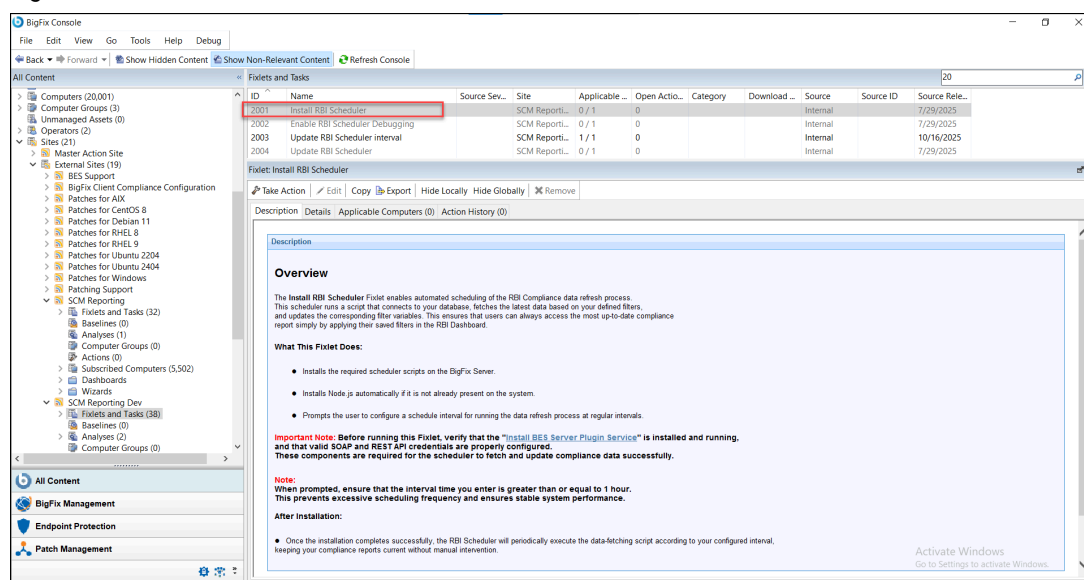
Installs the required scheduler scripts on the BigFix Server.

Installs Node.js automatically if it is not already present on the system.

Prompts the user to configure a schedule interval for running the data refresh.

Process at regular intervals.

Figure 2. Install RBI Scheduler



Update RBI Scheduler

Purpose

The *Update RBI Scheduler* Fixlet upgrades the existing RBI Scheduler installation to the latest available version. This ensures that the latest scripts, configurations, and dependencies are deployed on the BigFix Server for improved stability, functionality, and compatibility with the current RBI Compliance reporting process.

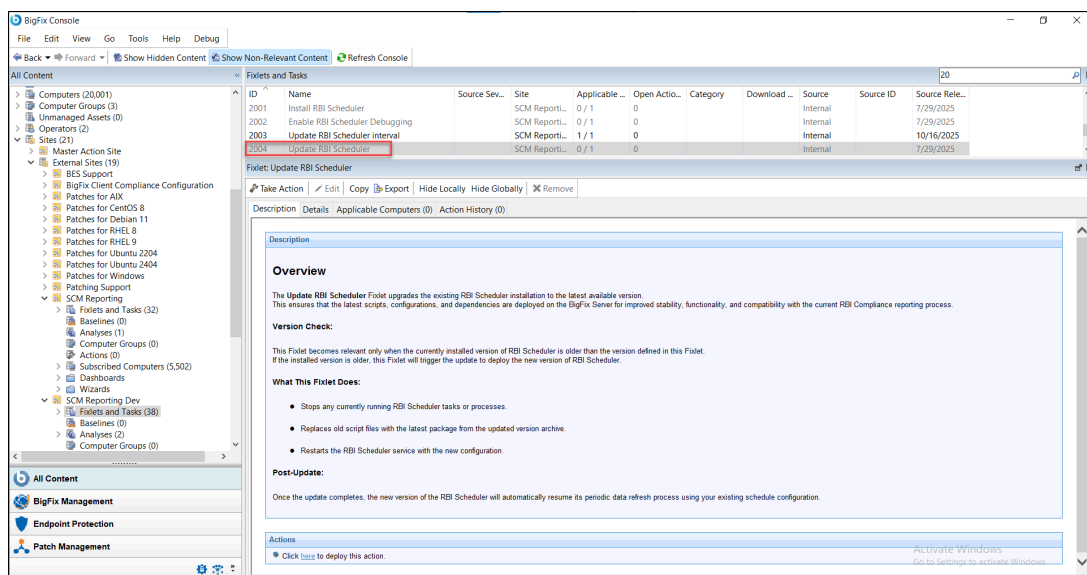
Functionality

Stops any currently running RBI Scheduler tasks or processes.

Replaces old script files with the latest package from the updated archive.

Restarts the RBI Scheduler service with the new configuration.

Figure 3. Update RBI Scheduler



Update RBI Scheduler Interval

Purpose

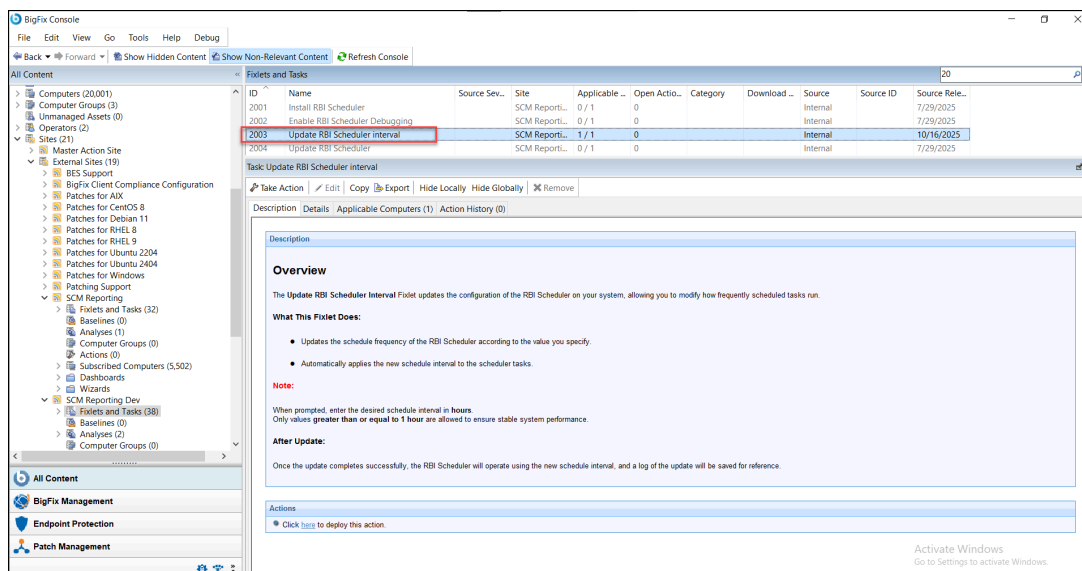
The *Update RBI Scheduler Interval* Task updates the configuration of the RBI Scheduler on your system, allowing you to modify how frequently scheduled tasks run.

Functionality

Updates the schedule frequency of the RBI Scheduler according to the value you specify.

Automatically applies the new schedule interval to the scheduler tasks.

Figure 4. Update RBI Scheduler Interval



Uninstall RBI Scheduler

The *Uninstall RBI Scheduler Fixlet* removes the RBI Scheduler components from the BigFix Server. This action is typically performed when the scheduler is no longer required or needs to be reinstalled from a clean state. By uninstalling, all related scripts, configuration files, and scheduler tasks are safely removed from the system.

Purpose

Removes the scheduler components from the BigFix Server.

Functionality

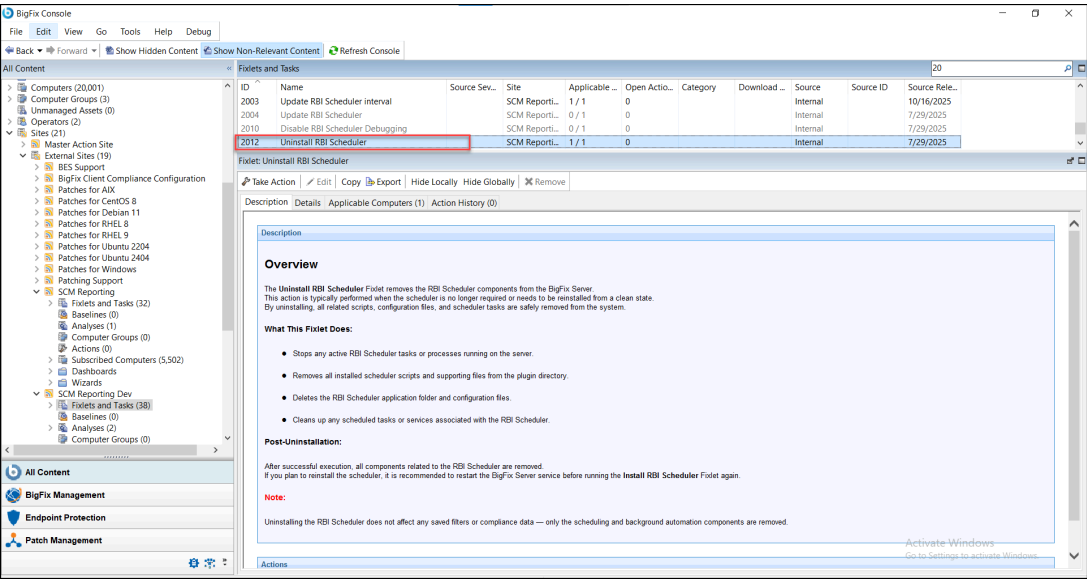
Stops any active RBI Scheduler tasks or processes running on the server.

Removes all installed scheduler scripts and supporting files from the plugin directory.

Deletes the RBI Scheduler application folder and configuration files.

Cleans up any scheduled tasks or services associated with the RBI Scheduler.

Figure 5. Uninstall RBI Scheduler



Chapter 3. Debugging and Diagnostics

Learn how to set up and configure the RBI Compliance report to customize report filters, define compliance parameters, and manage data synchronization. This reports also helps in monitoring and reporting device compliance.

These Fixlets are used to enable and disable detailed logging for troubleshooting purposes.

Enable RBI Scheduler Debugging

Purpose

The *Enable RBI Scheduler Debugging* Fixlet activates detailed logging for the RBI Scheduler. This allows administrators and support personnel to monitor scheduler operations, track execution steps, and troubleshoot issues more effectively.

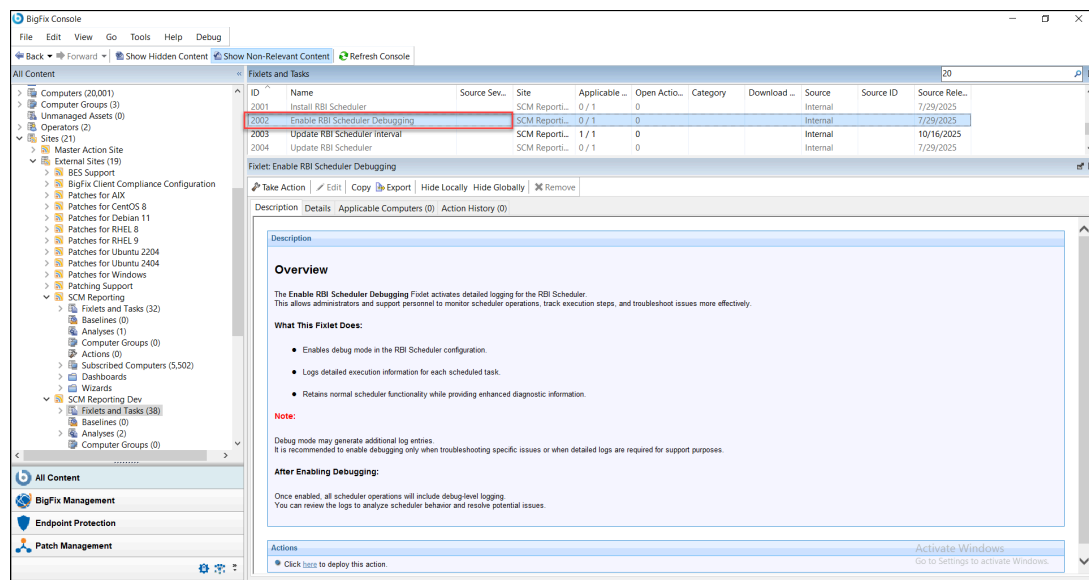
Functionality

Enables debug mode in the RBI Scheduler configuration.

Logs detailed execution information for each scheduled task.

Retains normal scheduler functionality while providing enhanced diagnostic information.

Figure 6. Enable RBI Scheduler Debugging



Disable RBI Scheduler Debugging

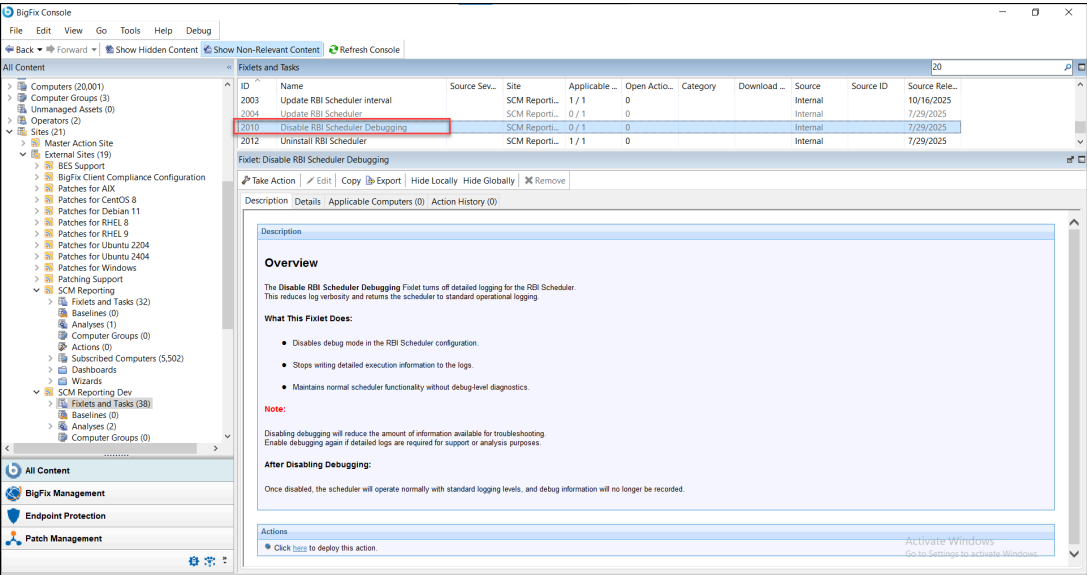
Purpose

The *Disable RBI Scheduler Debugging* Fixlet turns off detailed logging for the RBI Scheduler. This reduces log verbosity and returns the scheduler to standard operational logging.

Functionality

- Disables debug mode in the RBI Scheduler configuration.
- Stops writing detailed execution information to the logs.
- Maintains normal scheduler functionality without debug-level diagnostics.

Figure 7. Disable RBI Scheduler Debugging



Chapter 4. RBI Scheduler Analysis

The RBI Scheduler Analysis is designed to retrieve and confirm version and configuration details of the scheduler installed on the BigFix Server.

Use this analysis to quickly verify the following details:

- Confirm the currently installed RBI Scheduler version.
- Verifies that the scheduler is up to date after patch or configuration changes.
- Get the Node version installed on the local machine.
- Confirm whether debugging mode is currently enabled.
- See the configured time interval for the periodic scheduler runs.
- Support troubleshooting or validation activities during maintenance or upgrade operations.

Chapter 5. Support

For more information about this product, see the following resources:

- [BigFix Support Portal](#)
- [BigFix Developer](#)
- [BigFix Playlist on YouTube](#)
- [BigFix Tech Advisors channel on YouTube](#)
- [BigFix Forum](#)

Chapter 6. Notices

This information was developed for products and services offered in the US.

HCL may not offer the products, services, or features discussed in this document in other countries. Consult your local HCL representative for information on the products and services currently available in your area. Any reference to an HCL product, program, or service is not intended to state or imply that only that HCL product, program, or service may be used. Any functionally equivalent product, program, or service that does not infringe any HCL intellectual property right may be used instead. However, it is the user's responsibility to evaluate and verify the operation of any non-HCL product, program, or service.

HCL may have patents or pending patent applications covering subject matter described in this document. The furnishing of this document does not grant you any license to these patents. You can send license inquiries, in writing, to:

HCL
330 Potrero Ave.
Sunnyvale, CA 94085
USA
Attention: Office of the General Counsel

For license inquiries regarding double-byte character set (DBCS) information, contact the HCL Intellectual Property Department in your country or send inquiries, in writing, to:

HCL
330 Potrero Ave.
Sunnyvale, CA 94085
USA
Attention: Office of the General Counsel

HCL TECHNOLOGIES LTD. PROVIDES THIS PUBLICATION "AS IS" WITHOUT WARRANTY OF ANY KIND, EITHER EXPRESS OR IMPLIED, INCLUDING, BUT NOT LIMITED TO, THE IMPLIED WARRANTIES OF NON-INFRINGEMENT, MERCHANTABILITY OR FITNESS FOR A PARTICULAR PURPOSE. Some jurisdictions do not allow disclaimer of express or implied warranties in certain transactions, therefore, this statement may not apply to you.

This information could include technical inaccuracies or typographical errors. Changes are periodically made to the information herein; these changes will be incorporated in new editions of the publication. HCL may make improvements and/or changes in the product(s) and/or the program(s) described in this publication at any time without notice.

Any references in this information to non-HCL websites are provided for convenience only and do not in any manner serve as an endorsement of those websites. The materials at those websites are not part of the materials for this HCL product and use of those websites is at your own risk.

HCL may use or distribute any of the information you provide in any way it believes appropriate without incurring any obligation to you.

Licensees of this program who wish to have information about it for the purpose of enabling: (i) the exchange of information between independently created programs and other programs (including this one) and (ii) the mutual use of the information which has been exchanged, should contact:

HCL

330 Potrero Ave.

Sunnyvale, CA 94085

USA

Attention: Office of the General Counsel

Such information may be available, subject to appropriate terms and conditions, including in some cases, payment of a fee.

The licensed program described in this document and all licensed material available for it are provided by HCL under terms of the HCL Customer Agreement, HCL International Program License Agreement or any equivalent agreement between us.

The performance data discussed herein is presented as derived under specific operating conditions. Actual results may vary.

Information concerning non-HCL products was obtained from the suppliers of those products, their published announcements or other publicly available sources. HCL has not tested those products and cannot confirm the accuracy of performance, compatibility or any other claims related to non-HCL products. Questions on the capabilities of non-HCL products should be addressed to the suppliers of those products.

Statements regarding HCL's future direction or intent are subject to change or withdrawal without notice, and represent goals and objectives only.

This information contains examples of data and reports used in daily business operations. To illustrate them as completely as possible, the examples include the names of individuals, companies, brands, and products. All of these names are fictitious and any similarity to actual people or business enterprises is entirely coincidental.

COPYRIGHT LICENSE:

This information contains sample application programs in source language, which illustrate programming techniques on various operating platforms. You may copy, modify, and distribute these sample programs in any form without payment to HCL, for the purposes of developing, using, marketing or distributing application programs conforming to the application programming interface for the operating platform for which the sample programs are written. These examples have not been thoroughly tested under all conditions. HCL, therefore, cannot guarantee or imply reliability, serviceability, or function of these programs. The sample programs are provided "AS IS," without warranty of any kind. HCL shall not be liable for any damages arising out of your use of the sample programs.

Each copy or any portion of these sample programs or any derivative work must include a copyright notice as follows:

© (your company name) (year).

Portions of this code are derived from HCL Ltd. Sample Programs.

Trademarks

HCL Technologies Ltd. and HCL Technologies Ltd. logo, and hcl.com are trademarks or registered trademarks of HCL Technologies Ltd., registered in many jurisdictions worldwide.

Adobe, the Adobe logo, PostScript, and the PostScript logo are either registered trademarks or trademarks of Adobe Systems Incorporated in the United States, and/or other countries.

Java and all Java-based trademarks and logos are trademarks or registered trademarks of Oracle and/or its affiliates.

Microsoft, Windows, Windows NT, and the Windows logo are trademarks of Microsoft Corporation in the United States, other countries, or both.

Linux is a registered trademark of Linus Torvalds in the United States, other countries, or both.

UNIX is a registered trademark of The Open Group in the United States and other countries.

Other product and service names might be trademarks of HCL or other companies.

Terms and conditions for product documentation

Permissions for the use of these publications are granted subject to the following terms and conditions.

Applicability

These terms and conditions are in addition to any terms of use for the HCL website.

Personal use

You may reproduce these publications for your personal, noncommercial use provided that all proprietary notices are preserved. You may not distribute, display or make derivative work of these publications, or any portion thereof, without the express consent of HCL.

Commercial use

You may reproduce, distribute and display these publications solely within your enterprise provided that all proprietary notices are preserved. You may not make derivative works of these publications, or reproduce, distribute or display these publications or any portion thereof outside your enterprise, without the express consent of HCL.

Rights

Except as expressly granted in this permission, no other permissions, licenses or rights are granted, either express or implied, to the publications or any information, data, software or other intellectual property contained therein.

HCL reserves the right to withdraw the permissions granted herein whenever, in its discretion, the use of the publications is detrimental to its interest or, as determined by HCL, the above instructions are not being properly followed.

You may not download, export or re-export this information except in full compliance with all applicable laws and regulations, including all United States export laws and regulations.

HCL MAKES NO GUARANTEE ABOUT THE CONTENT OF THESE PUBLICATIONS. THE PUBLICATIONS ARE PROVIDED "AS-IS" AND WITHOUT WARRANTY OF ANY KIND, EITHER EXPRESSED OR IMPLIED, INCLUDING BUT NOT LIMITED TO IMPLIED WARRANTIES OF MERCHANTABILITY, NON-INFRINGEMENT, AND FITNESS FOR A PARTICULAR PURPOSE.

Notices

This information was developed for products and services offered in the US.

HCL may not offer the products, services, or features discussed in this document in other countries. Consult your local HCL representative for information on the products and services currently available in your area. Any reference to an HCL product, program, or service is not intended to state or imply that only that HCL product, program, or service may be used. Any functionally equivalent product, program, or service that does not infringe any HCL intellectual property right may be used instead. However, it is the user's responsibility to evaluate and verify the operation of any non-HCL product, program, or service.

HCL may have patents or pending patent applications covering subject matter described in this document. The furnishing of this document does not grant you any license to these patents. You can send license inquiries, in writing, to:

HCL
330 Potrero Ave.
Sunnyvale, CA 94085
USA
Attention: Office of the General Counsel

For license inquiries regarding double-byte character set (DBCS) information, contact the HCL Intellectual Property Department in your country or send inquiries, in writing, to:

HCL
330 Potrero Ave.
Sunnyvale, CA 94085
USA
Attention: Office of the General Counsel

HCL TECHNOLOGIES LTD. PROVIDES THIS PUBLICATION "AS IS" WITHOUT WARRANTY OF ANY KIND, EITHER EXPRESS OR IMPLIED, INCLUDING, BUT NOT LIMITED TO, THE IMPLIED WARRANTIES OF NON-INFRINGEMENT, MERCHANTABILITY OR FITNESS FOR A PARTICULAR PURPOSE. Some jurisdictions do not allow disclaimer of express or implied warranties in certain transactions, therefore, this statement may not apply to you.

This information could include technical inaccuracies or typographical errors. Changes are periodically made to the information herein; these changes will be incorporated in new editions of the publication. HCL may make improvements and/or changes in the product(s) and/or the program(s) described in this publication at any time without notice.

Any references in this information to non-HCL websites are provided for convenience only and do not in any manner serve as an endorsement of those websites. The materials at those websites are not part of the materials for this HCL product and use of those websites is at your own risk.

HCL may use or distribute any of the information you provide in any way it believes appropriate without incurring any obligation to you.

Licensees of this program who wish to have information about it for the purpose of enabling: (i) the exchange of information between independently created programs and other programs (including this one) and (ii) the mutual use of the information which has been exchanged, should contact:

HCL

330 Potrero Ave.

Sunnyvale, CA 94085

USA

Attention: Office of the General Counsel

Such information may be available, subject to appropriate terms and conditions, including in some cases, payment of a fee.

The licensed program described in this document and all licensed material available for it are provided by HCL under terms of the HCL Customer Agreement, HCL International Program License Agreement or any equivalent agreement between us.

The performance data discussed herein is presented as derived under specific operating conditions. Actual results may vary.

Information concerning non-HCL products was obtained from the suppliers of those products, their published announcements or other publicly available sources. HCL has not tested those products and cannot confirm the accuracy of performance, compatibility or any other claims related to non-HCL products. Questions on the capabilities of non-HCL products should be addressed to the suppliers of those products.

Statements regarding HCL's future direction or intent are subject to change or withdrawal without notice, and represent goals and objectives only.

This information contains examples of data and reports used in daily business operations. To illustrate them as completely as possible, the examples include the names of individuals, companies, brands, and products. All of these names are fictitious and any similarity to actual people or business enterprises is entirely coincidental.

COPYRIGHT LICENSE:

This information contains sample application programs in source language, which illustrate programming techniques on various operating platforms. You may copy, modify, and distribute these sample programs in any form without payment to HCL, for the purposes of developing, using, marketing or distributing application programs conforming to the application programming interface for the operating platform for which the sample programs are written. These examples have not been thoroughly tested under all conditions. HCL, therefore, cannot guarantee or imply reliability, serviceability, or function of these programs. The sample programs are provided "AS IS," without warranty of any kind. HCL shall not be liable for any damages arising out of your use of the sample programs.

Each copy or any portion of these sample programs or any derivative work must include a copyright notice as follows:

© (your company name) (year).

Portions of this code are derived from HCL Ltd. Sample Programs.

Trademarks

HCL Technologies Ltd. and HCL Technologies Ltd. logo, and hcl.com are trademarks or registered trademarks of HCL Technologies Ltd., registered in many jurisdictions worldwide.

Adobe, the Adobe logo, PostScript, and the PostScript logo are either registered trademarks or trademarks of Adobe Systems Incorporated in the United States, and/or other countries.

Java and all Java-based trademarks and logos are trademarks or registered trademarks of Oracle and/or its affiliates.

Microsoft, Windows, Windows NT, and the Windows logo are trademarks of Microsoft Corporation in the United States, other countries, or both.

Linux is a registered trademark of Linus Torvalds in the United States, other countries, or both.

UNIX is a registered trademark of The Open Group in the United States and other countries.

Other product and service names might be trademarks of HCL or other companies.

Terms and conditions for product documentation

Permissions for the use of these publications are granted subject to the following terms and conditions.

Applicability

These terms and conditions are in addition to any terms of use for the HCL website.

Personal use

You may reproduce these publications for your personal, noncommercial use provided that all proprietary notices are preserved. You may not distribute, display or make derivative work of these publications, or any portion thereof, without the express consent of HCL.

Commercial use

You may reproduce, distribute and display these publications solely within your enterprise provided that all proprietary notices are preserved. You may not make derivative works of these publications, or reproduce, distribute or display these publications or any portion thereof outside your enterprise, without the express consent of HCL.

Rights

Except as expressly granted in this permission, no other permissions, licenses or rights are granted, either express or implied, to the publications or any information, data, software or other intellectual property contained therein.

HCL reserves the right to withdraw the permissions granted herein whenever, in its discretion, the use of the publications is detrimental to its interest or, as determined by HCL, the above instructions are not being properly followed.

You may not download, export or re-export this information except in full compliance with all applicable laws and regulations, including all United States export laws and regulations.

HCL MAKES NO GUARANTEE ABOUT THE CONTENT OF THESE PUBLICATIONS. THE PUBLICATIONS ARE PROVIDED "AS-IS" AND WITHOUT WARRANTY OF ANY KIND, EITHER EXPRESSED OR IMPLIED, INCLUDING BUT NOT LIMITED TO IMPLIED WARRANTIES OF MERCHANTABILITY, NON-INFRINGEMENT, AND FITNESS FOR A PARTICULAR PURPOSE.