

BigFix Compliance PCI Add-on User Guide



Special notice

Before using this information and the product it supports, read the information in [Notices \(on page Ivii\)](#).

Edition notice

This edition applies to BigFix version 11 and to all subsequent releases and modifications until otherwise indicated in new editions.

Contents

Chapter 1. Overview.....	5
PCI DSS overview.....	5
What's new in PCI DSS content update release.....	5
PCI DSS 4.0.....	6
PCI DSS checklists.....	7
PCI DSS policies.....	8
Key users.....	10
Chapter 2. Setup.....	11
Subscribing to the SCM reporting site.....	11
Accessing the PCI DSS Fixlet sites.....	11
Configuring endpoints.....	12
Filesystem scan configuration.....	15
Setting up the PCI DSS Policy Reports for BigFix Compliance Analytics V2.0 and later.....	16
Disabling the PCI DSS Policy Reports.....	17
Chapter 3. Using checks and checklists.....	18
Viewing check Fixlets from the HCL BigFix console.....	18
Viewing checks from BigFix Compliance Analytics.....	18
Creating custom checklists.....	19
Modifying check parameters.....	20
Remediating configuration settings.....	21
Chapter 4. Understanding the results in BigFix Compliance Analytics.....	23
Starting BigFix Compliance Analytics.....	23
Importing data to BigFix Compliance Analytics.....	24
Viewing reports from BigFix Compliance Analytics.....	25
Viewing PCI DSS compliance results.....	26
Viewing reports on BigFix Compliance Analytics V2.0 and later.....	27
Viewing custom reporting on BigFix Compliance Analytics V1.8 and earlier.....	38
Creating exceptions.....	54
Appendix A. Resources.....	56
Notices.....	lvii

Chapter 1. Overview

HCL BigFix Compliance PCI Add-on is a new chargeable component that provides security configuration checklists that are based on the Payment Card Industry Data Security Standard (PCI DSS). These compliance checks are designed to help ensure continuous compliance at every endpoint in your organization.

This PCI component uses the Security Configuration Management (SCM), which is a module under BigFix Compliance. SCM provides a comprehensive library of technical controls to detect and enforce security configurations for endpoints and servers in your organization. By using BigFix Compliance, you have instant visibility into the configurations of systems within a globally distributed infrastructure.

SCM includes a web interface, BigFix Compliance Analytics (formerly known as Security and Compliance Analytics, or SCA), which summarizes and analyzes large data streams and shows the health of your IT assets. BigFix Compliance Analytics provides report views and tools for managing the vulnerability that is found by the BigFix Compliance checks. These compliance reporting tools and views help you to identify configuration issues, which consequently enforce constant policy compliance.

These technical controls and reporting tools are based on industry best practices and standards for endpoints and server security configuration.

PCI DSS overview

HCL BigFix Compliance PCI Add-on provides checklists for PCI compliance. The Payment Card Industry Data Security Standard (PCI DSS) is a baseline of technical and organizational requirements that are related to the Payment Card Industry.

The PCI DSS states that you must establish a secure payments environment throughout your organization to achieve compliance. BigFix Compliance enforces security configurations for endpoints and servers in your organization. It can help your organization protect endpoints and assure assessors or regulators that you are meeting security compliance for PCI DSS.

By complying with the PCI DSS standards you ensure that cardholder data and sensitive authentication data are secure and well-protected from malicious users and attacks.

The PCI DSS applies to all entities involved in payment card processing and requires continuous compliance with the security standards and best practices set by the PCI Security Standards Council. For more information about PCI DSS, see the [PCI Security Standards Council](#) website.

When endpoints are protected, all entities that are involved in payment card processing are secure.

What's new in PCI DSS content update release

HCL BigFix Compliance PCI Add-on provides additional support and enhancement in the recent update.

For a detailed list of releases, see the [PCI DSS Checklists](#).

PCI DSS Policy Reporting

The new PCI DSS Policy reporting, which is available in BigFix Compliance Analytics V2.0.9, identifies the level of compliance for each system within an entire organization based on a specific PCI DSS requirement or PCI DSS milestone. It also provides a report which shows an aggregated view of compliance data across all PCI DSS checklists. To view the available policy reporting, see [PCI DSS policies \(on page 8\)](#).



Note: BigFix Compliance PCI Add-on provides the **PCI DSS Reporting** site to allow you to use the Policy feature in BigFix Compliance Analytics V2.0.9. This site contains the metadata file required for creating the PCI DSS Requirements and Milestones based reports.



Important: You must complete a few other prerequisites before you can use the PCI DSS Policy reporting. For more information, see [Setting up the PCI DSS Policy Reports for BigFix Compliance Analytics V2.0 and later \(on page 16\)](#).

The PCI DSS Policy reporting enables the following users to prepare and manage compliance for PCI DSS:

- Compliance Managers can generate reports from a requirements perspective to prepare for the audit report in accordance with the guidelines provided by the PCI Security Standards Council.
- Compliance Managers and organizations can use the milestone report views during early PCI DSS adoption to understand compliance posture and prioritize actions.
- IT Managers can map the compliance data to specific computers and assign corresponding personnel to remediate non-compliant checks.

Support for PCI DSS v4.0 has been added as the next generation of this standard.

PCI DSS 4.0

On March 31, 2022, PCI Security Standards Council (PCI SSC) released PCI Data Security Standard (PCI DSS) version 4.0. The PCI DSS is a global standard that establishes a baseline of technical and operational standards for protecting account data. The PCI DSS version 4.0 supersedes PCI DSS version 3.2.1 to address emerging threats and technologies better and provide innovative ways to mitigate new security risks.

To get more details on PCI DSS version 4.0 which is the next generation of the standard, refer to [Resource Hub](#).

BigFix released PCS DSS V4.0 for different platforms.

The main highlights of the PCI DSS version 4.0 checklist includes:

- Increased number of Fixlets are now included in the standard.
- Increased number of sub-requirements and milestones.
- Increased remediation count.



Note: Effective March 31, 2024, PCI DSS version 3.2.1 will end its support, and PCI DSS v4.0 will become the only active version of the standard. However, the existing version of PCI DSS version 3.2.1 will remain valid for two years until its discontinuation on March 31, 2024. During this period, organizations has to grasp the changes in PCI DSS version 4.0 and implement any necessary adjustments.

To get the details about the latest release of PCI DSS version 4.0, see [Release announcement PCI Add-on](#).

PCI DSS checklists

SCM is organized through checklists that assess and manage the endpoint and server configurations. Each compliance checklist is distributed by BigFix as an external Fixlet site.

SCM provides a large number of checklists to report compliance and remediate endpoint security configurations based on industry best practices, such as Center of Internet Security (CIS) and Defense Information Systems Agency Security Technical Implementation Guide (DISA STIG). HCL BigFix Compliance also provides security configuration checklists for Payment Card Industry Data Security Standard (PCI DSS) compliance.

Each PCI DSS checklist contains technical checks that are based on the PCI standard. For details on PCI standard, see [PCI DSS Requirements and Security Assessment Procedures](#).



Note: The checks that are specific to PCI DSS Requirements and Security Assessment Procedures v3.2 are considered as best practices until they become mandatory in 2018. You can exclude those checks from the compliance report using the standard exception mechanism available in BigFix Compliance Analytics (formerly known as SCA). For more information, see [Creating exceptions \(on page 54\)](#).

These technical checks assess security policies and configurations on each endpoint, provide remediation steps to fix vulnerabilities, and provide reporting capabilities. Compliance data can be explored from the reports that provide the requirements perspective or the prioritized approach. For BigFix Compliance Analytics V2.0 or later, see [Viewing the Policy View List report \(on page 28\)](#). For BigFix Compliance Analytics V1.8 or earlier, see [Viewing custom reports \(on page 38\)](#).



Note: PCI DSS requirements 9, 11, and 12, which are process-oriented in nature, are not covered in SCM.

For a detailed PCI DSS checklists on operating systems, refer to [PCI DSS Checklists](#).

For more details on released PCI DSS checklists, refer to [Release announcement PCI-Addon](#).

PCI DSS checklist content

You can access a checklist by subscribing to the external Fixlet sites that are provided by SCM. A single site can contain checks for multiple requirements.

Each site contains a set of Fixlets and Analyses, where Fixlets or checks correspond to a specific configuration setting in accordance with the PCI DSS requirements. A Fixlet evaluates a system setting against a specific policy

value and displays the compliance state of an endpoint. An analysis is associated to each Fixlet that retrieves the actual state of each configuration item on an endpoint.

Most of the Fixlets have a parameterized setting to enable customization for compliance evaluation.

Each Fixlet contains instructions on how to manually remediate a non-compliant endpoint. These steps can be found in the **Description** tab. Some of these Fixlets provide actions that you can take to automatically remediate non-compliant settings on endpoints. For more information about remediation support, see the [PCI DSS Checklists](#).

The compliance status of each PCI DSS check and checklist is calculated by Security and Compliance Analytics (SCA), which is now known as BigFix Compliance Analytics, during a periodic Extract Transform and Load (ETL) process. Some checklists require you to run the **Environment Setup Task**. For more information, see [Configuring endpoints \(on page 12\)](#).

PCI DSS policies

BigFix Compliance Analytics V2.0.9 releases a new policy reporting capability, which provides an aggregated view of compliance from a PCI DSS Requirement or PCI DSS Milestone report perspective.

To view the policies, click **Reports > Policies**.

Table 1. Available PCI DSS policies

Policy Report Name	Description
PCI DSS Milestones View	<p>The PCI DSS Milestones View contains checklists that are based on the PCI DSS Milestone. It retrieves compliance data results from the endpoints that are subscribed to the custom copy of the PCI DSS external sites and displays the aggregated data in a single view.</p> <p>This reporting view can help identify the level of compliance for each system within an entire organization based on the PCI DSS milestones.</p> <p>This view is based on the <i>Prioritized Approach for PCI DSS</i> document and can be useful for early PCI DSS adoption or prioritization of remediation actions. Compliance Managers and organizations can run an early assessment, such as the beginning of the PCI DSS implementation, on the remediation actions that they would need to take on noncompliance high risk systems.</p> <p>This view also allows IT Managers to map compliance data to specific computers and assign corresponding personnel to run remediation actions on a system with non-compliant checks. They also use this reporting view to help them decide on the work prioritization for IT operators.</p> <p>You must enable the PCI DSS Reporting site from the License Overview dashboard in the BigFix console to use this policy view.</p>

Table 1. Available PCI DSS policies (continued)

Policy Report Name	Description
PCI DSS Requirements View	<p data-bbox="581 344 1425 491">The PCI DSS Requirements View contains checklists that are based on each PCI DSS Requirement. It retrieves compliance data results from the endpoints that are subscribed to the custom copy of the PCI DSS external sites and displays the aggregated data in a single view.</p> <p data-bbox="581 531 1422 678">This reporting view can help identify the level of compliance for each system within an entire organization based on the PCI DSS requirement. This view is based on the <i>Requirements and Security Assessment Procedures</i> document and can be useful for Compliance Managers in preparing for an audit.</p> <p data-bbox="581 718 1403 781">You must enable the PCI DSS Reporting site from the License Overview dashboard in the BigFix console to use this policy view.</p>
PCI DSS Checklists	<p data-bbox="581 848 1409 995">The PCI DSS Checklists view contains custom PCI DSS checklists only. It retrieves compliance data results from the endpoints that are subscribed to the custom copy of the PCI DSS external sites and displays the aggregated data in a single view.</p> <p data-bbox="581 1035 1422 1224">This reporting view can help Compliance Managers identify the level of compliance for each system within an entire organization based on the overall PCI DSS checklist. It can help also IT Managers to map compliance data to specific computers and assign corresponding personnel to run remediation actions on a system with non-compliant checks.</p> <p data-bbox="581 1264 1403 1327">You must enable the PCI DSS Reporting site from the License Overview dashboard in the BigFix console to use this policy view.</p>
SCM Checklists	<p data-bbox="581 1394 1406 1541">The SCM Checklists view contains all SCM checklists, including the out-of-the-box checklists for PCI DSS. This reporting view shows the compliance results of the endpoints that are subscribed to the PCI DSS external sites and non-PCI DSS related external and custom sites.</p> <p data-bbox="581 1581 1416 1728">This reporting view is available to allow users, who do not have license to the BigFix Compliance PCI Add-on offering, to use the Policy feature in BigFix Compliance version 2.0 and later. Therefore, it is not dependent on the PCI DSS Reporting site.</p>



Note: The source documents for the PCI DSS Requirement and Milestone Policy Views are made available by the PCI Security Standards Council and can be accessed from the *PCI Security Standard Council Document Library* at https://www.pcisecuritystandards.org/document_library?category=pcidss&document=pci_dss.

Sample reports can be found in [Viewing reports on BigFix Compliance Analytics V2.0 and later \(on page 27\)](#).

Key users

Learn how users use the PCI DSS checklists for their role.

IT Managers, who commonly take the role of a BigFix Console Operator, focus on the detailed day-to-day configuration management of all systems to use detailed information for each endpoint. They are expected to run remediation actions on endpoints. They use the PCI DSS checklists to enforce security policies and document the current state of compliance against corporate policies. They also use the PCI DSS Milestones Reporting view to help them decide on the work prioritization for IT operators.

Compliance Managers use the PCI DSS reporting when preparing for audit reports. The reports can be generated based on a PCI DSS template that covers requirements or milestones, and can help in assessing the actions needed to resolve a non-compliance check.



Note: If concerns regarding separation of duties arise, use BigFix version 9.2 or later where access control for actions is allowed.

Chapter 2. Setup

Complete configuration steps to access the PCI DSS checklists and checks and ensure accurate relevance evaluation on the endpoints.



Note: BigFix for Security and Compliance Analytics (SCA) is now called BigFix Compliance Analytics. The listed resources have yet to be rebranded.

This guide assumes that you have installed and configured Security Management Configuration (SCM) successfully. You can access the PCI DSS checklists only after that step is completed and if you have a license for BigFix Compliance PCI Add-on.

This guide does not describe the installation and configuration steps for BigFix nor for BigFix Compliance Analytics. For a list of documentation on SCM and BigFix Compliance Analytics, see [Resources \(on page 56\)](#).

Subscribing to the SCM reporting site

To fully use the reporting functions in the BigFix Compliance Analytics, you must subscribe to the SCM reporting site.

1. From the BigFix console, go to the **BigFix Management** and click **License Overview**. The dashboard opens.
2. Scroll down to the **Security and Compliance** section and enable the **SCM Reporting** site.
3. Click **SCM Reporting** from the navigation tree.
4. From the **Computer Subscriptions** tab, change the value from **No computers** to **All computers** then select **Save Changes**.

Accessing the PCI DSS Fixlet sites

Before you can access the security configuration checklists that are related to PCI DSS, you must acquire the sites and accept the license agreement. After you acquire the site, you must gather the contents of the site to your console. You must also subscribe your computers to the site so that they can access the PCI DSS content.

If you have enabled any of the PCI DSS beta sites in your environment, you must first remove them to avoid any conflicting issues with the production sites. If you fail to do so, the content in the production sites will fail.

You can access the PCI DSS sites only if you have a valid license for the HCL BigFix Compliance PCI Add-on component. For details about getting a license, contact [HCL Software Support](#).

The procedure for acquiring the PCI DSS sites and gathering the contents of the site is similar to the procedure for other BigFix applications and sites. You can subscribe to a PCI DSS site by using the License Overview Dashboard from the BigFix Management domain only if you have purchased the license.

1. From the BigFix console, go to the **BigFix Management** domain and click **License Overview**.
2. Scroll down to the **PCI DSS Security and Compliance** section of the **License Overview** dashboard.

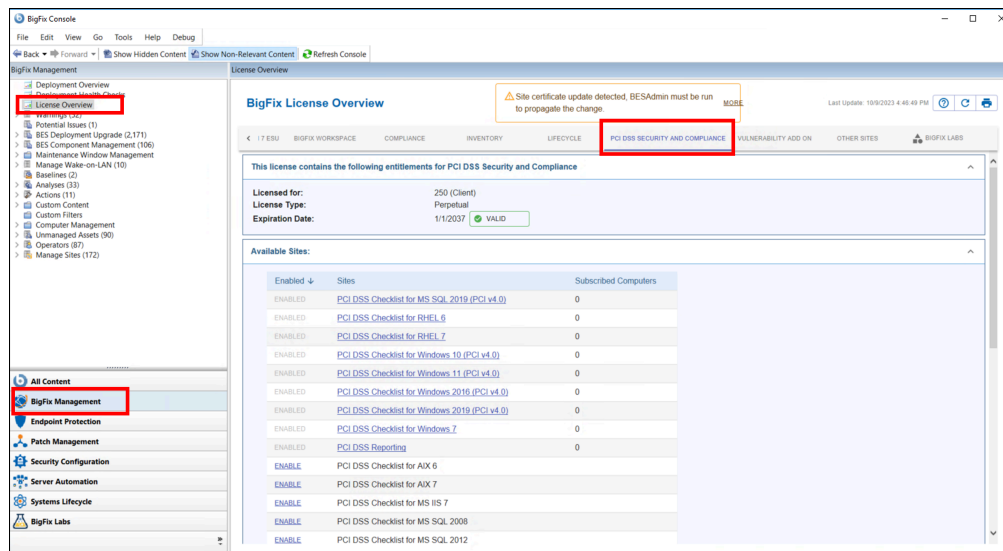


Note: The **PCI DSS Security and Compliance** section will only be visible if you have purchased the license.

- Click **Enable** beside the PCI DSS sites that you want to your computers to subscribe to.

The site is added as an external site in the HCL BigFix Console. It typically takes a few minutes for the contents to become available on your system.

Figure 1. License Overview dashboard



- Go to the **Security Configuration** domain.
- Click **All Security Configuration > Sites > External Sites**, and then click the added site.
- Click the **Computer Subscriptions** tab to subscribe the computers to a site.



Note: Limit the access to the site to only the computers that you want to be able to use the PCI DSS checklists.

Configuring endpoints

Some checklists require you to run the **Environment Setup Task** to populate the necessary properties on the endpoints to enable relevance evaluation. Run this task when it shows as relevant and refresh the results on the endpoint.



Note: You only need to complete this additional prerequisite task if you are using the PCI DSS Checklist for AIX 7 or the PCI DSS Checklist for AIX 6 site.

If Trusted Execution (TE) is implemented in AIX systems, the **Environment Setup Task** is not able to run the scripts from the Fixlets as designed, which would then cause relevance issues. To avoid such issues, provide the following paths in the Trusted Execution Path list during TEP enablement:

```
/var/opt/BESClient/___BESData/<siteName>/SCM/AIX/71
/var/opt/BESClient/___BESData/<siteName>/SCM/AIX/util
/var/opt/BESClient/___BESData/<siteName>/SCM
```

where `<siteName>` is the name of the site that is used in your environment.

For external sites, the name used in the path is identical to the site name. For example, `/var/opt/BESClient/___BESData/PCI DSS Checklist for AIX 7/SCM/AIX/71`.

For custom sites, the spaces in the name are replaced with underscores and the `CustomSite_` prefix is added. For example, `/var/opt/BESClient/___BESData/CustomSite_Checklist_for_AIX_7/SCM/AIX/71`.

You must run the **Environment Setup Task** or **Deploy and Run Taks**, if your checklist includes any of these:

Figure 2. Deploy and Run Task in the PCI DSS Checklist for RHEL8 (PCI 4.0) site

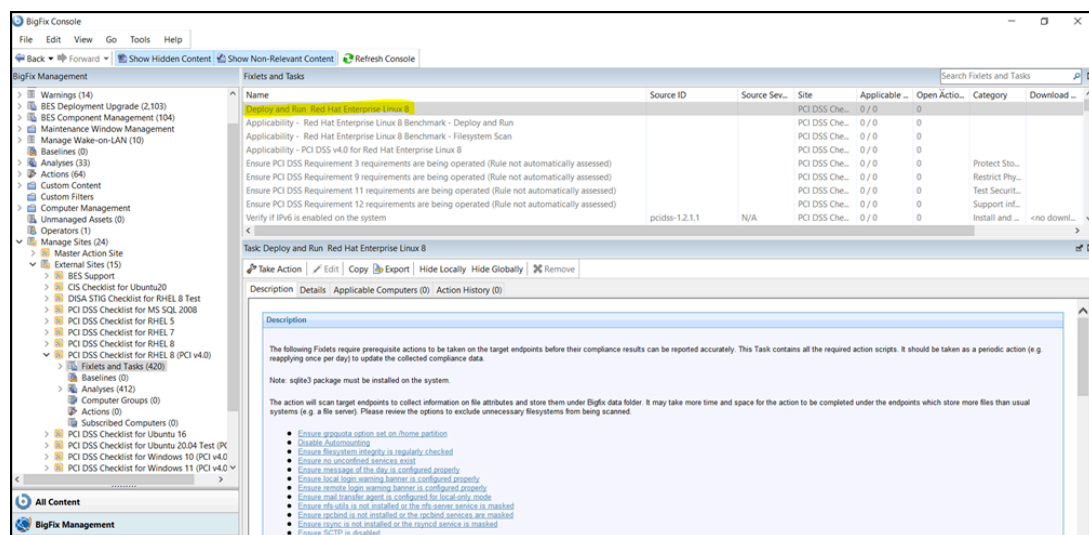
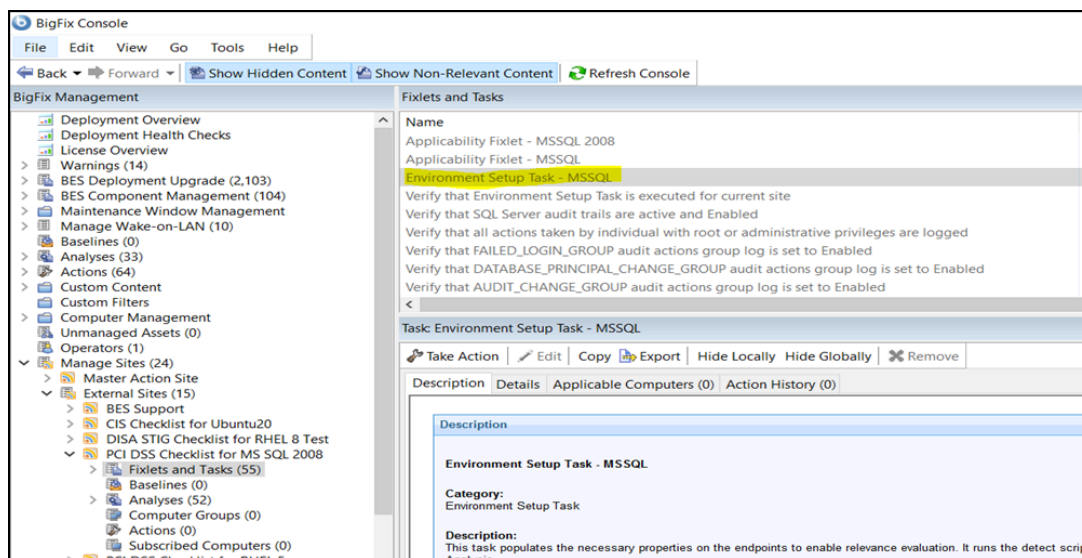


Figure 3. Environment Setup Task in the PCI DSS Checklist for MS SQL 2008 site



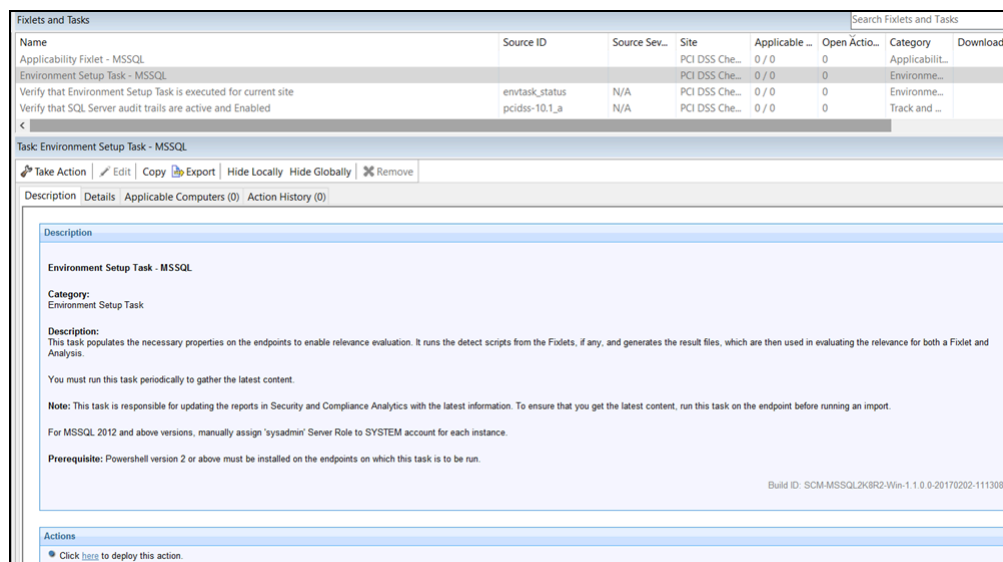
Note: You do not need to complete this task if you are not using any of these checklists.

The check Fixlets from these sites will only show the current results when the **Environment Setup Task** completes.

Schedule periodic execution of the **Environment Setup Task** if you are using any of the mixed content sites.

1. From the **Security Configuration** domain, click **All Security Configuration > Sites > External Sites**.
2. Select a checklist, and click **Fixlets and Tasks**.
3. In the List panel, locate and click **Environment Setup Task**.

Figure 4. Environment Setup Task in the PCI DSS Checklist for MS SQL 2008 site



4. Click **Take Action** to deploy the task. You can also click the appropriate link in the Actions box.

5. Select the appropriate endpoints in your environment.
6. Click the **Execution** tab.

Figure 5. Take Action - Execution tab

Take Action

Name: Environment Setup Task Create in domain: All Content

Preset: [Custom] Default ☐ Show only personal presets Save Preset...

Target Execution Users Messages Offer Post-Action Applicability Success Criteria Action Script

Constraints

☒ Starts on 5/ 7/2015 at 4:15:58 AM client local time

☐ Ends on 5/ 9/2015 at 4:15:58 AM client local time

☐ Run between 1:00:00 AM and 2:59:00 AM client local time

☐ Run only on Sun Mon Tue Wed Thu Fri Sat client local time

☐ Run only when Active Directory Path matches

Behavior

☐ On failure, retry 3 times

☐ Wait 1 hour between attempts

☒ Reapply this action

☐ whenever it becomes relevant again

☒ while relevant, waiting 12 hours between reapplications

☐ Limit to 3 reapplications

☐ Start client downloads before constraints are satisfied

☐ Stagger action start times over 5 minutes to reduce network load

OK Cancel

7. Set the environment task to run daily and click **OK**.
8. When the task completes, refresh the endpoints.

The **Environment Setup Task** also updates the reports in the Security and Compliance Analytics console (now known as BigFix Compliance Analytics) with the latest results. To ensure that you get the latest content, run this task on the endpoint before running an import. For automatic, daily import to BigFix Compliance Analytics, there is no need to schedule more than one run of the **Environment Setup Task** action.

Filesystem scan configuration

If you are using the PCI DSS UNIX/Linux checklist, you can further configure the range of filesystems and directories to be included in the property file used for relevance evaluation.

Some of the UNIX/Linux Fixlets verify attributes and ownership of various subsets of files on local drives, including the property file that is created by the **Environment Setup Task**. This property file denotes the list of files that are used by the Fixlets in the UNIX/Linux checklist. It contains a list of all local and regular files with the exclusion of remote filesystems and special filesystems such as `/tmp` or `/dev`.

BigFix provides the `globalfind` feature to help prevent multiple scanning of local filesystems, which in turn provides better performance results.

You can set the parameters for the `globalfind` feature from **Configure Filesystem Scan Options** to indicate the mount points, directories, or filesystems that are not to be included in the property file. For example, you can specify to skip the data partitions that have too many files.



Note: The parameter changes will only take effect after the next Environment Setup Task run.

Setting up the PCI DSS Policy Reports for BigFix Compliance Analytics V2.0 and later

BigFix Compliance Analytics version 2.0 provides PCI DSS Policy reports that contain aggregated data across checklists, which identifies the level of compliance for a specific PCI DSS requirement or milestone. To generate the policy reports, complete the required setup.

You must configure both the BigFix console and BigFix Compliance Analytics to view the following PCI DSS Policy Reports:

- PCI DSS Milestones View
- PCI DSS Requirements View
- PCI DSS Checklists

These reports retrieve compliance data results from custom sites, not from the external sites. To ensure a complete report of your deployment in the listed reports, configure custom sites for each PCI DSS external site containing the checks. This rule does not apply to the PCI DSS Reporting site.



Note: Endpoints that are subscribed to the PCI DSS external sites are shown in the SCM Checklists policy report. The configuration steps discussed in this section do not apply to the SCM Checklists policy report.

If there are several custom copies of a PCI DSS external site, an endpoint must be subscribed to only a single instance of the custom site. For example, if PCI DSS Checklist for RHEL 5 has two custom sites named RHEL 6-Custom1 and RHEL 6-Custom2, you must subscribe the endpoints to either RHEL 6-Custom1 or RHEL 6-Custom2 at a single time. If the endpoints are subscribed to both custom sites, ETL will fail during import. A sample message for the failure is as follows:

```
Duplicate Check Result(s) detected, you have fixlets with the same scm-id that
belong to two different sites (external and custom site), you need to unsubscribe
from external site and re-run Import.
```

1. From the BigFix console, create a custom site for each external PCI DSS checklist and subscribe endpoints to it.

You can use the **Create Custom Checklist** dashboard from the SCM Reporting site to create custom copies of the checklists. For more information, see [Creating custom checklists \(on page 19\)](#).



Important: You can only use one custom copy of the PCI DSS external site. Do not subscribe the endpoints to the external sites because the results are not covered in the reporting.

2. From the BigFix console, enable the **PCI DSS Reporting** site.
 - a. Go to the **BigFix Management** and click **License Overview**. The dashboard opens.
 - b. Scroll down the dashboard and find the **Security and Compliance** section, and enable the **PCI DSS Reporting** site.
 - c. Click **PCI DSS Reporting** from the navigation tree.

The **PCI DSS Reporting** site contains the metadata file that is needed to create policies in BigFix Compliance Analytics version 2.0 and later. You do not need to set the computer subscriptions for this site.

3. Configure the API connection from BigFix Compliance Analytics.

For more information about creating a data source, see [Adding a data source](#).

Disabling the PCI DSS Policy Reports

If for any reason you decide not to use the PCI DSS Policy reporting after completing the configuration, you can still disable the reporting with a few steps.

To disable the generation of PCI DSS Policy Reports in BigFix Compliance Analytics V2.0.9, complete the following steps.

1. Disable the **PCI DSS Reporting** site from the BigFix console.

Do the following steps:

- a. Go to the **Security Configuration** domain.
- b. Click **All Security Configuration > Sites > External Sites**, and then click the **PCI DSS Reporting** site to open it.



Note: You can also open the **PCI DSS Reporting** site from the **License Overview** dashboard.

- c. From the Work Area Tool bar, click **Remove**.
2. Run a data import from the BigFix Compliance Analytics console.
For more information, see [Importing data to BigFix Compliance Analytics \(on page 24\)](#).

Chapter 3. Using checks and checklists

The check Fixlets in Configuration Management checklists assess an endpoint against a configuration standard. Many check Fixlets have a corresponding analysis, sometimes referred to as measured values, that report the value of the element that the check Fixlet evaluates.

Viewing check Fixlets from the HCL BigFix console

A check Fixlet becomes relevant when a client computer is out of compliance with a configuration standard. By viewing the Configuration Management Fixlets, Console Operators can identify non-compliant computers and the corresponding standards.

Subscribe to the PCI DSS Fixlet sites to gain access to the check Fixlets.

Complete the following steps to view the check Fixlets in the HCL BigFix Console after subscribing and gathering the site content.

1. From the **Security Configuration** domain, click **All Security Configuration > Sites > External Sites**.
2. Expand a checklist.
3. Click **Fixlets and Tasks**. The **Fixlets and Tasks** section opens.
4. Click one of the Fixlets displayed in the list.
The Fixlet opens with the following tabs: **Description**, **Details**, **Applicable Computers**, and **Action History**.
5. Click the **Description** tab to view the text that describes the Fixlet.

The Fixlet is applicable to a subset of endpoints on your network. The size of that subset is shown in the **Applicable Computers** tab.

A Fixlet typically has a description of the check appended with the rationale and guidelines of the actions for remediation. If the Fixlet is relevant, you must take an action listed in the Remediation section of the description to remediate the noncompliance. You can also access the associated analysis from the description.



Note: The Check ID refers to the Source ID of the Fixlet.

6. If you are using any of the checklists that contains **Deploy and Run Task** or **Environment Setup Task**, run the **Environment Setup Task** or **Deploy and Run Task**.



Note: Run the **Environment Setup Task** periodically to gather the latest results. For more information about this task, see [Configuring endpoints \(on page 12\)](#).

Viewing checks from BigFix Compliance Analytics

The compliance status of each PCI DSS check and checklist is calculated by BigFix Compliance Analytics during a periodic Extract Transform and Load (ETL) process.

BigFix Compliance Analytics provides report views and tools for managing the vulnerability of PCI DSS checks.

The PCI DSS checks that are activated in the HCL BigFix console are evaluated on each computer in your deployment and returns a status of pass, fail, or not applicable to BigFix Compliance Analytics.

Each computer also reports computer properties and analysis values, such as check measured values that are active in your deployment. Check results are aggregated by the BigFix Compliance Analytics server and augmented by computer properties and analysis values to provide compliance overviews and detailed lists of results.

For more information about how the checks are presented in different compliance reports, see [Understanding the results in BigFix Compliance Analytics \(on page 23\)](#).

Creating custom checklists

Create custom copies of the PCI DSS content if you want to modify the checks based on a specific corporate policy. You can manually create a custom site to host the PCI DSS checklists or use the Create Custom Checklist wizard to create copies of the PCI DSS checklists and save them in a custom site.

You must subscribe to the SCM Reporting external site.

You can use custom checklists to fine-tune your ability to customize Configuration Management parameters, which gives you control over your security status. Custom checklists target specific sets of computers with tailored content using the subscription mechanism. This allows statistics to be gathered with finer granularity. For more information, see [Modifying check parameters \(on page 20\)](#).

- Creating custom checklists manually

1. From the Security Configuration Domain, go to **Configuration Management > Checklist Tools > Create Custom Checklist**.
2. Enter the name of the new checklist.
3. Select the target platform.
4. Click the drop-down menu to select which external checklist you copy the checks from. As you select the checks, they are shown in the staged list at the lower part of the window.
5. Click the **Activate Measured Value analyses after copying** check box to activate all analyses that were copied.
6. Click **Create Checklist**.

The console begins copying the checks in the selected lists into your new custom checklist. The process might take several minutes, depending on the number and size of the checklists selected.

- Creating custom checklist by using the Create Custom Checklist wizard

1. Select **Tools > Create Custom Site**.
2. You are prompted for a name for your custom site. Enter a name and click **OK**.
3. From the Domain panel, find your site under **Sites > Custom** and click it to describe your site. From the **Details** tab, enter a description of your site. From the **Domain** pull-down menu, select a Domain to house your site.

4. From the **Computer Subscriptions** tab, indicate which subset of your BigFix client computers you want to subscribe to this site.
5. From the **Operator Permissions** tab, you can grant specific access permissions to specific operators.
6. Click the **Save Changes** button above the work area to complete the description of your site. You must enter your password to propagate your new custom site.

Subscribe computers to the custom checklist.



Note: Custom checklists do not support site relevance, so take extra precaution when you subscribe computers to custom checklists.

Modifying check parameters

In addition to monitoring compliance status and remediating settings that are out of compliance, you can also modify the values for the defined configuration settings according to company policies.

To modify the desired value of the check parameter in the Fixlet check description, you must first create a custom site. For more information about custom sites, see [Creating custom checklists \(on page 19\)](#).

Parameters are stored as site settings, so you can parameterize the same check differently for each site containing a copy of the check.



Note: Not all checks in custom sites can be parameterized.

Some of the Fixlet checks allow you to set a more restrictive value than the one specified by the PCI DSS, giving you greater flexibility to customize security policies to meet a specific situation.



Important: Custom parameterization may take a few minutes to process. Allow enough time between updating a check parameter and executing the Environment Setup Task for optimum results.



Note: Parameter changes will only take effect after you run the **Environment Setup Task**. For information about this task, see [Configuring endpoints \(on page 12\)](#).

1. Open the Fixlet check and click the **Description** tab.
2. Scroll down to the **Parameters** section and enter the value.

Figure 6. Parameterization

Check compliance: Condition 1

Condition 1: PasswordHistorySize

Details: security_database("PasswordHistorySize")

Compliant if: values oval?(all, at_least_one_exists) ([s] s.to_i >= input.to_i)

Default value: 24

Desired value: x

Click "Save" to update this check.
Note: Only a custom copy of this check can be configured.

3. Click **Save**.
4. Deploy the Fixlet.

Remediating configuration settings

The PCI DSS checklists support remediation. Console operators can resolve a vulnerability issue with a single action. A remediation action can only be taken on an endpoint where the Fixlet is relevant.

You can audit, assess, and remediate configuration settings using Security and Compliance Analytics (SCA), which is now known as BigFix Compliance Analytics. For Fixlet checks that can be automatically remediated, an action is displayed in the relevant Fixlet. You can take a remediation action only on the relevant and selected endpoints.



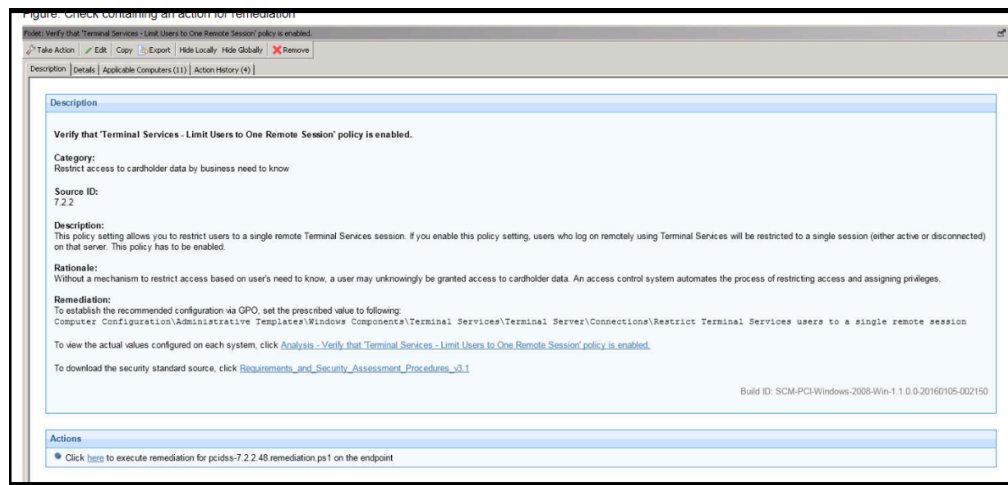
Note: Not all Fixlets have a remediation action.



Note: When the external global policy is enabled, any changes to the local endpoint is overwritten. In such case, the remediation action must be run using the external global policy solution.

1. From the Security Configuration Domain, go to **All Security Configuration > Fixlets and Tasks**.
2. Expand the sub-folders to search for the Fixlet you want to enable.
3. In the **Fixlet** window, click the **Description** tab and scroll down to the Actions box.
4. Click in the Actions box link to remediate the specified policy issue.

Figure 7. Check containing an action for remediation



5. Set your parameters in the Take Action dialog and click **OK**.

Chapter 4. Understanding the results in BigFix Compliance Analytics

Use BigFix Compliance Analytics (formerly known as Security and Compliance Analytics or SCA) to navigate and explore security configuration check results.

BigFix Compliance Analytics is a web-based application designed to help you manage security, vulnerability, and risk assessment. The application tabulates security and vulnerability compliance check results to identify configuration issues and report levels of compliance toward security configuration goals. Compliance data is collected with each nightly import and is presented with historical context for trend analysis.

These reports can be filtered, sorted, grouped, customized, or exported according to your preferences and requirements.

For more information about using BigFix Compliance Analytics, see the [BigFix Compliance Analytics User's Guide](#).

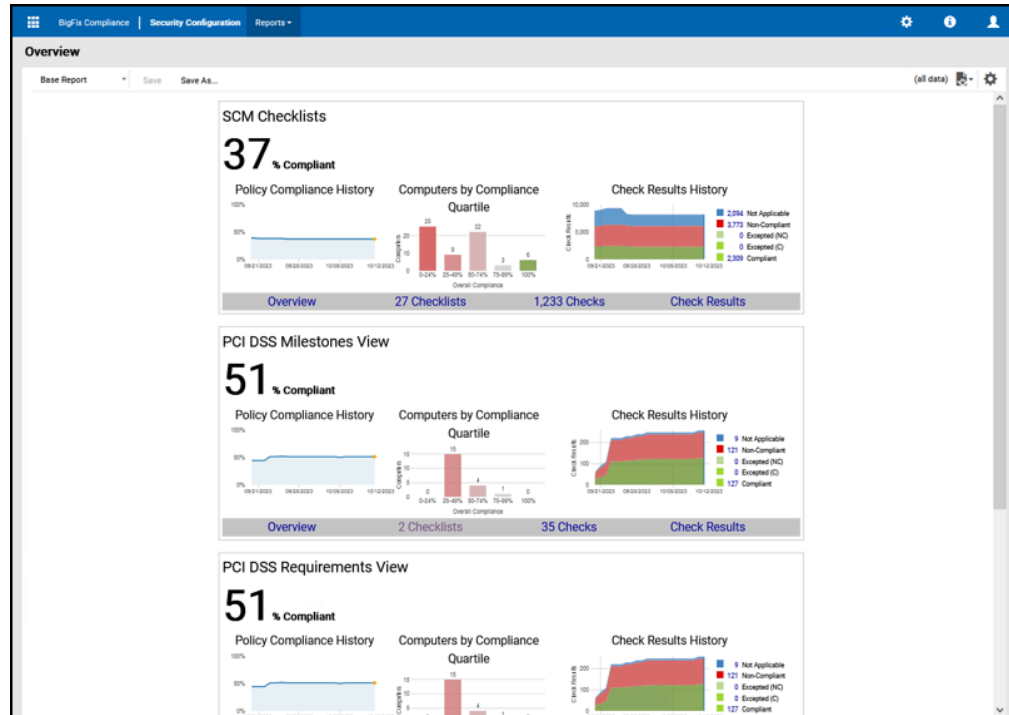
Starting BigFix Compliance Analytics

Use any of the supported web browsers to open the web-based application.

Before you can use Security and Compliance Analytics (SCA), which is now known as BigFix Compliance Analytics, you must complete the necessary installation and configuration steps. For more information, see the [BigFix Compliance Analytics Setup Guide](#).

1. Open Mozilla Firefox or Internet Explorer.
2. In the **URL** field, enter `http://localhost:<port>/scm`, where *port* is the server HTTP port that was specified during the BigFix Compliance Analytics installation.

Figure 8. BigFix Compliance Analytics 1.9 - Overview page

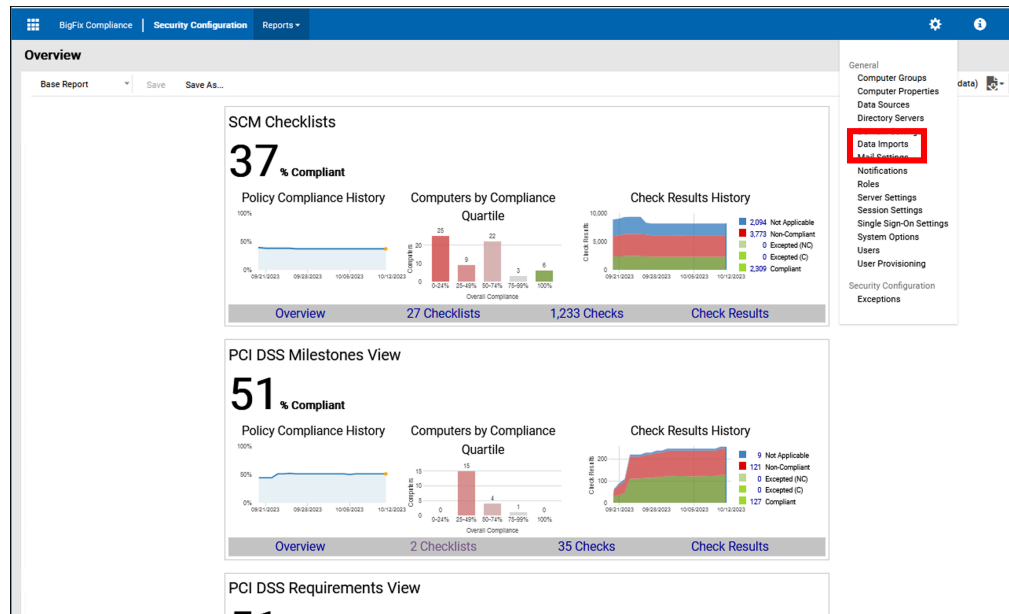


Importing data to BigFix Compliance Analytics

Depending on your configuration, the Extract Transform and Load (ETL) process that computes the compliance status of each check and checklist could take a long time. To ensure that you are viewing the latest reports, verify that the imports are configured to run automatically and that a recent import has completed successfully.

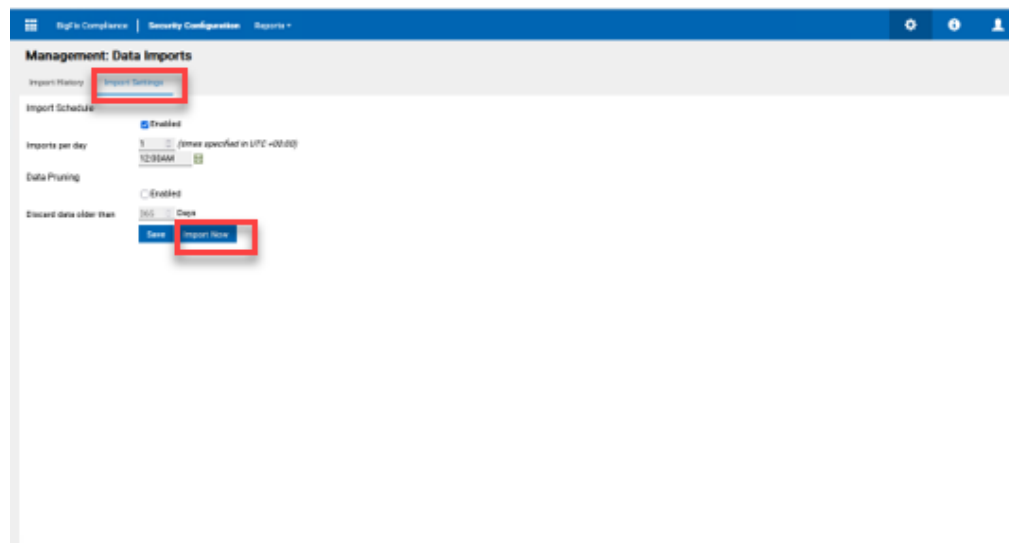
1. From the BigFix Compliance Analytics console, click **Management > Imports**.

Figure 9. Management menu



2. Click **Import Now**.

Figure 10. Import Now button



Viewing reports from BigFix Compliance Analytics

BigFix Compliance Analytics displays reports that contain the compliance status of your deployment. Each PCI DSS checklist and its checks are exported periodically into Compliance Analytics.

You can view the compliance status of your deployment from any of the four report types:

Overview Reports

If no PCI policies are enabled, the page will automatically default to the SCM overview.

In BigFix Compliance Analytics version 2.0 and later, the home page defaults to the Overview report that provides a graphical representation of the Policy History, Computers by Policy Quartile, and Check Results History for all PCI DSS Policies if the steps discussed at [Setting up the PCI DSS Policy Reports for BigFix Compliance Analytics V2.0 and later \(on page 16\)](#) are completed.

List Reports

The List report shows a list of checklists, checks, computers, computers groups, or vulnerabilities in the deployment. It provides the attributes of each type and the overall, historical aggregate compliance results of all types on all visible computers.

Each row entry in the report represents a list type, such as checklists, checks, computers, computers groups, or vulnerabilities.

Check Results Reports

The Check Results report shows the list of all checks and computers, attributes of each computer and check, and the historical compliance result for each check on each computer.

Each row entry in the report represents a single check on a single computer.

Exceptions Reports

The Exception report shows the list and status of exceptions in the given scope applied to each computer visible to the logged-in user, together with attributes of each check, each computer, and each exception.

Each row entry in the report represents a single check on a single computer as specified by an exception.

Each of these reports contain graphical and tabular views of different aspects of your deployment compliance status. For more information about the available report types, see [Viewing deployment compliance status reports](#).

Viewing PCI DSS compliance results

This section shows how you can view the results of PCI DSS compliance at a checklist, checks, and check results levels.



Note: Data is updated in BigFix Compliance Analytics once a day. To ensure that your reports contain the latest data, run the import feature after running the Environment Setup tasks in the applicable sites.

Before you start accessing the available reports, complete the following tasks:

- Import data to ensure that the reports contain the latest data. For more information, see [Importing data to BigFix Compliance Analytics \(on page 24\)](#).
- If you were involved in the Early Access Program, unsubscribe from any of the PCI DSS beta sites to avoid any issues during import.

Viewing reports on BigFix Compliance Analytics V2.0 and later



Note: The PCI DSS Policy Reports are available only when you complete the steps described in [Setting up the PCI DSS Policy Reports for BigFix Compliance Analytics V2.0 and later \(on page 16\)](#).

A policy view is based on an approach to gain compliance for PCI DSS, such as PCI DSS requirement or PCI DSS milestone. For more information about policy views, see [PCI DSS policies \(on page 8\)](#).

For simplicity, these checklists that are associated to policies will be referenced as *Policy Checklists* in this document.

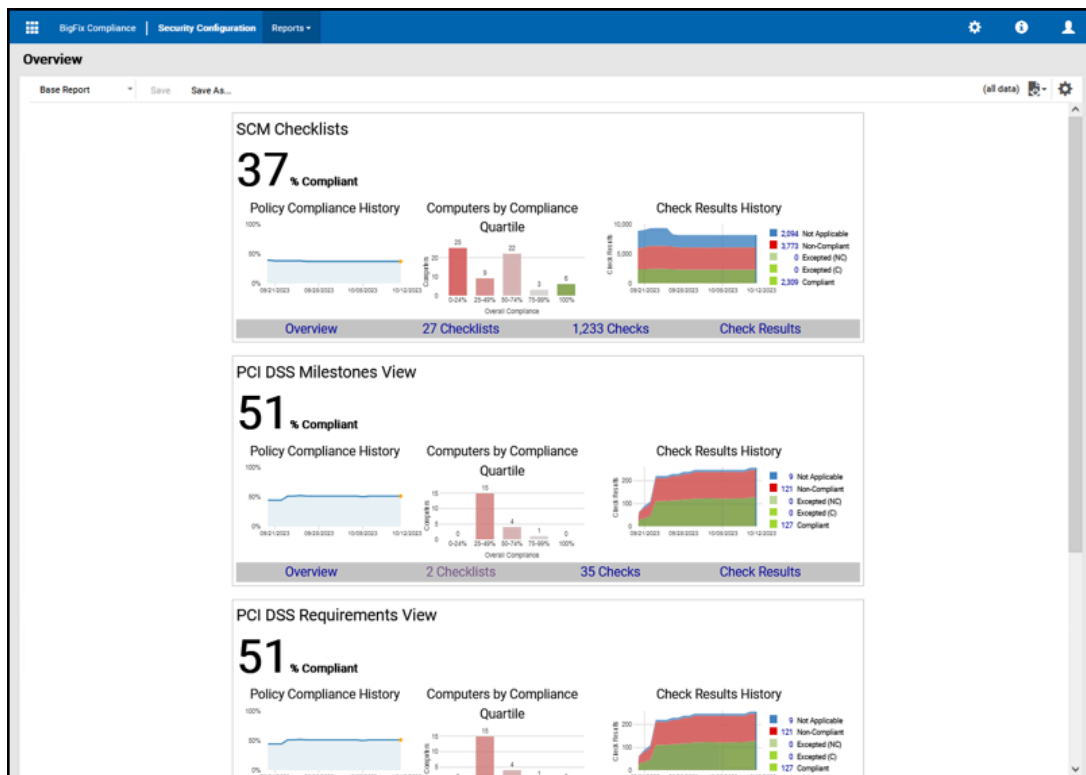
Policy Checklists contain a collection of checks that run across multiple PCI DSS sites. These checklists provide a new way of reporting, which can help you better assess and identify the level of compliance in your organization.

Viewing the Overview report

Starting from BigFix Compliance Analytics V2.0 and later, the home page defaults to the Overview report that provides a graphical representation of the Policy History, Computers by Policy Quartile, and Check Results History for all PCI DSS Policies.

You can quickly drill down to the checklists, checks, or check results views for each PCI DSS Policy Overview report by using the quick links.

Figure 11. Overview page displaying the PCI DSS policies compliance overview summary

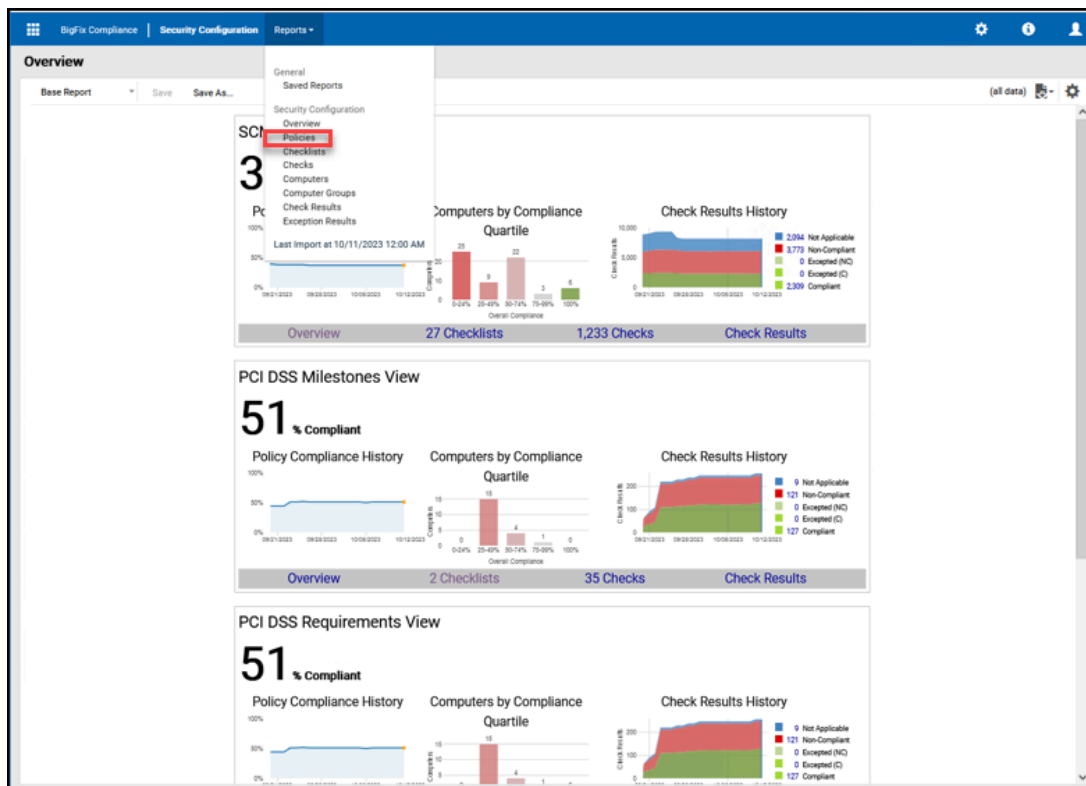


Viewing the Policy View List report

The Policy View List report shows a list of policies that provide the cumulative state aggregated on the level of a specific PCI DSS requirement or milestone. Results from the Requirements and Milestones reports include summary views at the home page or on the computer level.

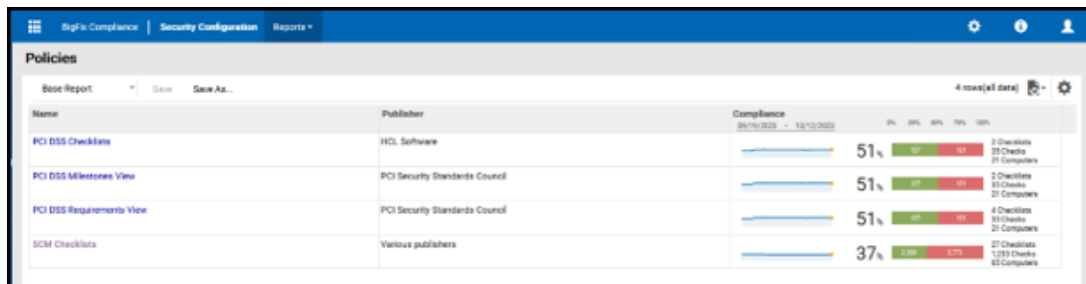
To view the policies, click **Reports > Policies**. You can also access them from the Overview page.

Figure 12. Policies menu



The Policy View List report provides high-level compliance information at a policy level or across checklists.

Figure 13. List of available policies



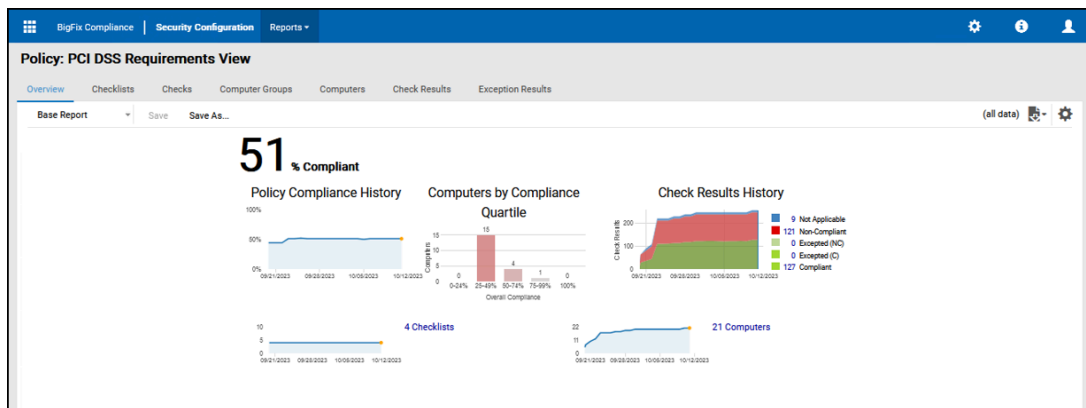
Viewing the Policy View Overview report

The Policy Overview report shows information about a single policy and overall, historical compliance for the policy as applied to all computers visible to logged in users.

The Overview report provides a graphical representation of the Policy History, Computers by Policy Quartile, and Check Results History for each of the PCI DSS Policy. The BigFix Compliance Analytics V2.0.9 home page lists the Overview reports for all policies.

You can click each policy from the home page to display the standard Overview report. The PCI DSS Requirement View is shown as an example.

Figure 14. PCI DSS Requirement policy overview



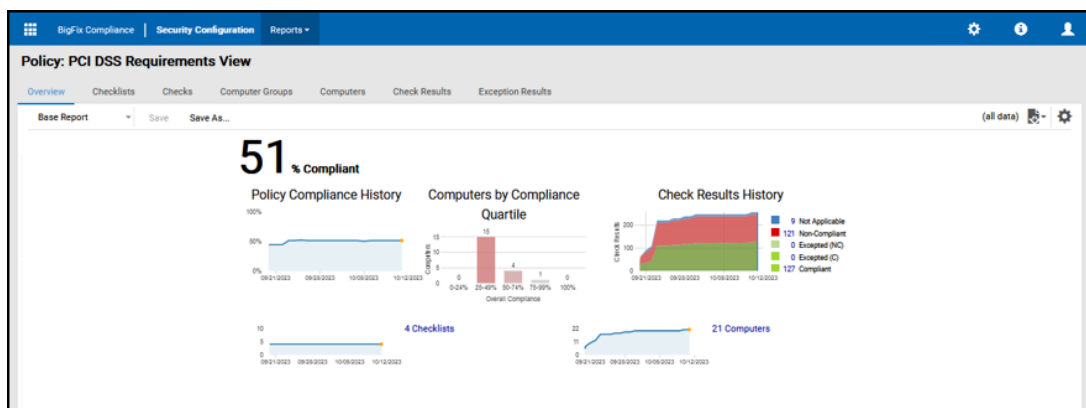
You can also access the standard Overview report from the Policy List report by clicking a policy view name.

Viewing the Policy Checklist List report

A policy checklist is based on the policy views or compliance approaches that are made available in BigFix Compliance Analytics V2.0.9. It contains a collection of checks that may belong to multiple PCI DSS checklists or sites.

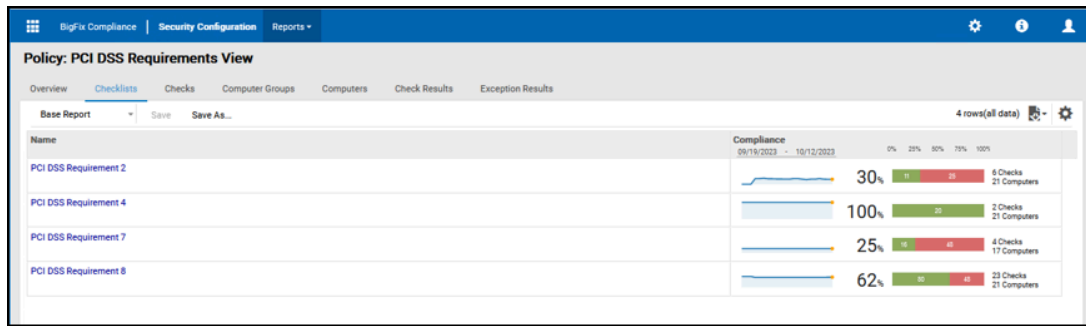
You can view all the checklists under a policy from the Overview report, either from the home page or the Policy View Overview report. The quick links in each of the policy view in the home page is clickable.

Figure 15. Overview report from the home page



The Policy Checklist List report view provides high-level compliance information at a checklist level based on a Policy View. It displays the list of checklists in the deployment together with the attributes of each checklist and the overall, historical aggregate compliance results of all checks on all visible computers for each checklist.

Figure 16. Policy List Report

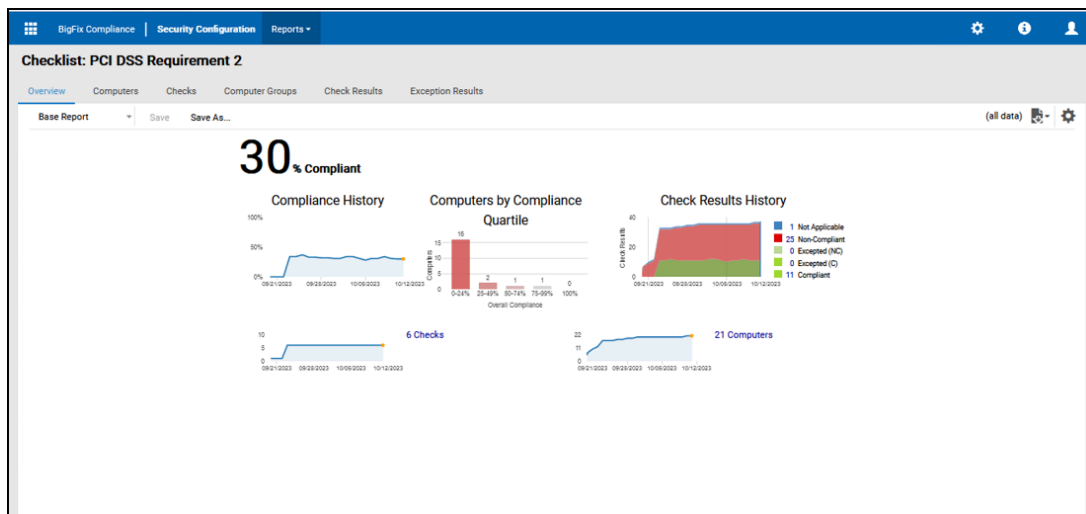


Viewing the Policy Checklist Overview report

The Policy Checklist Overview report shows information about a single policy checklist, which may contain checks from multiple PCI DSS checklists or sites. It includes information such as the quantity of checks in the policy checklist, and the overall, historical aggregate compliance for the policy checklist as applied to all computers visible to logged in users.

To view the overview information of a policy checklist, click the checklist name from the Checklist List report. The PCI DSS Requirement 5 policy checklist is shown as an example. The Checklist Overview Report displays.

Figure 17. Checklist overview



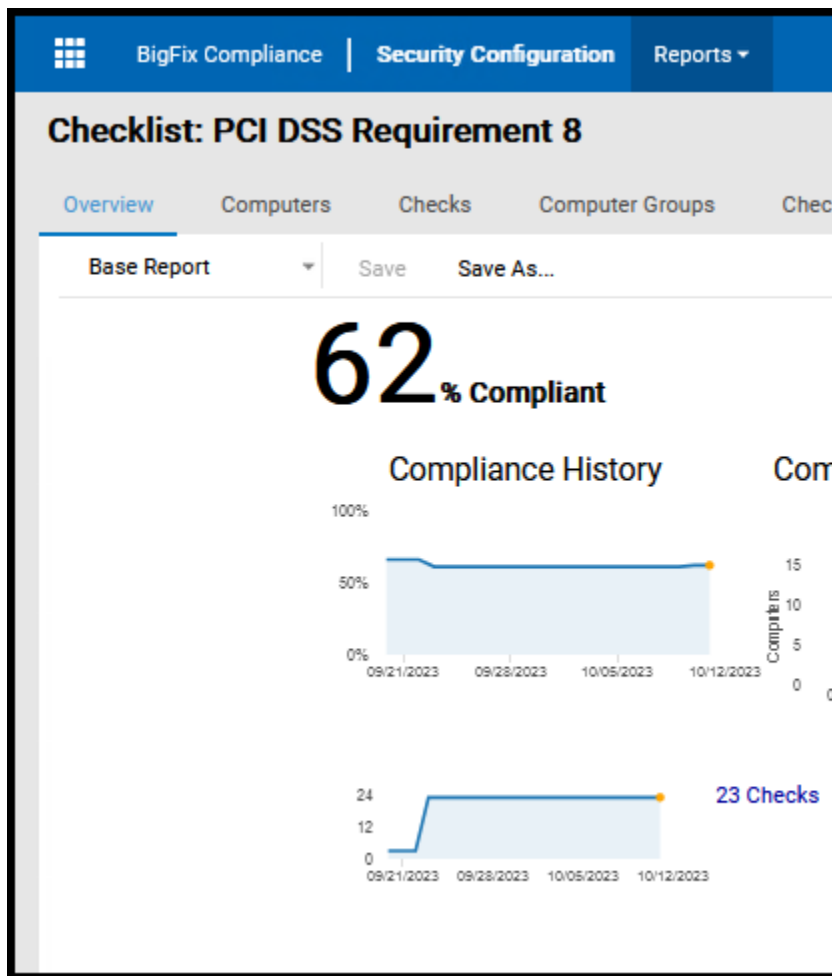
The Overview shows a graphic representation of compliance history, computers by compliance quartile, and check results history with an overall compliance percentage shown in the top-left corner of the console.

Viewing the Checks List report

The Checks List report shows the list of checks available in a policy checklist.

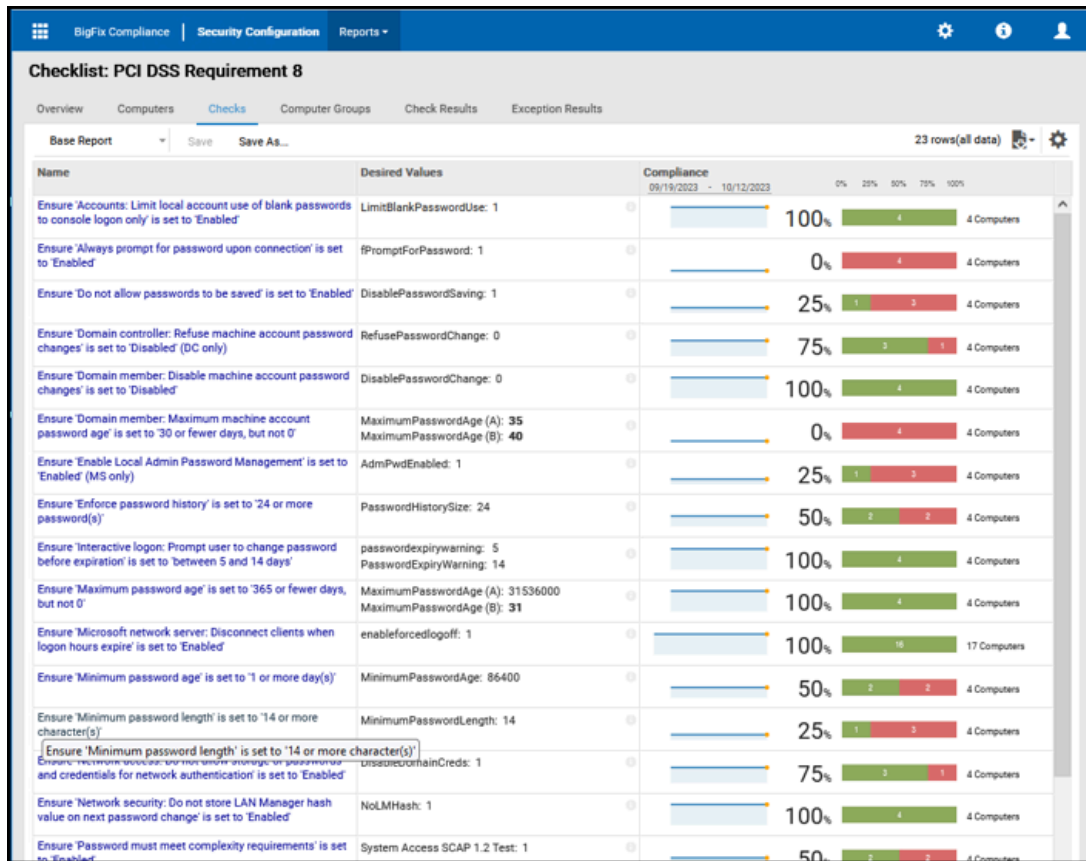
In the following figure, the Policy Checklist Overview report shows that there are 336 checks available in the PCI DSS Requirement 2 checklist. To view these checks in detail, drill down to the checks by clicking on the link.

Figure 18. Number of available checks in a checklist



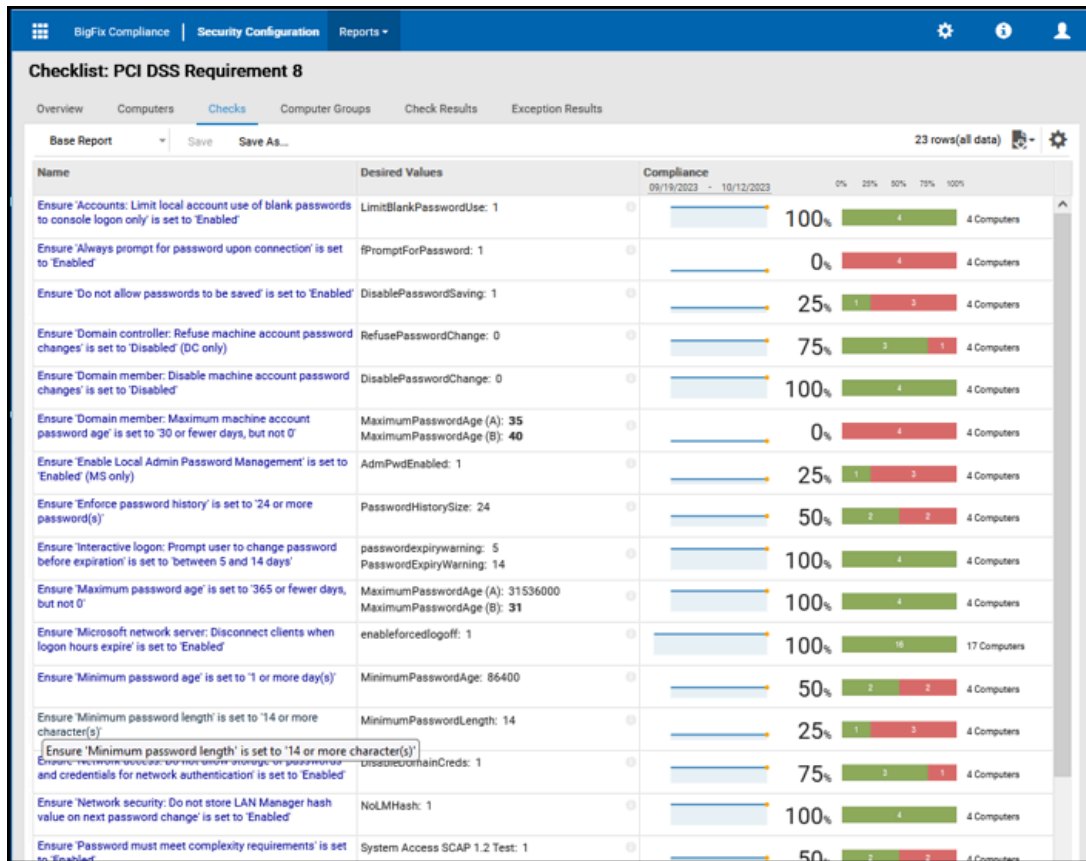
You can also access the Check List report from the Policy List report by the Report View drop-down list, which is highlighted in the following figure. This method allows you to view all the checks for a policy view, as well as to drill down to a particular checklist and then view its checks.

Figure 19. Policy List Report



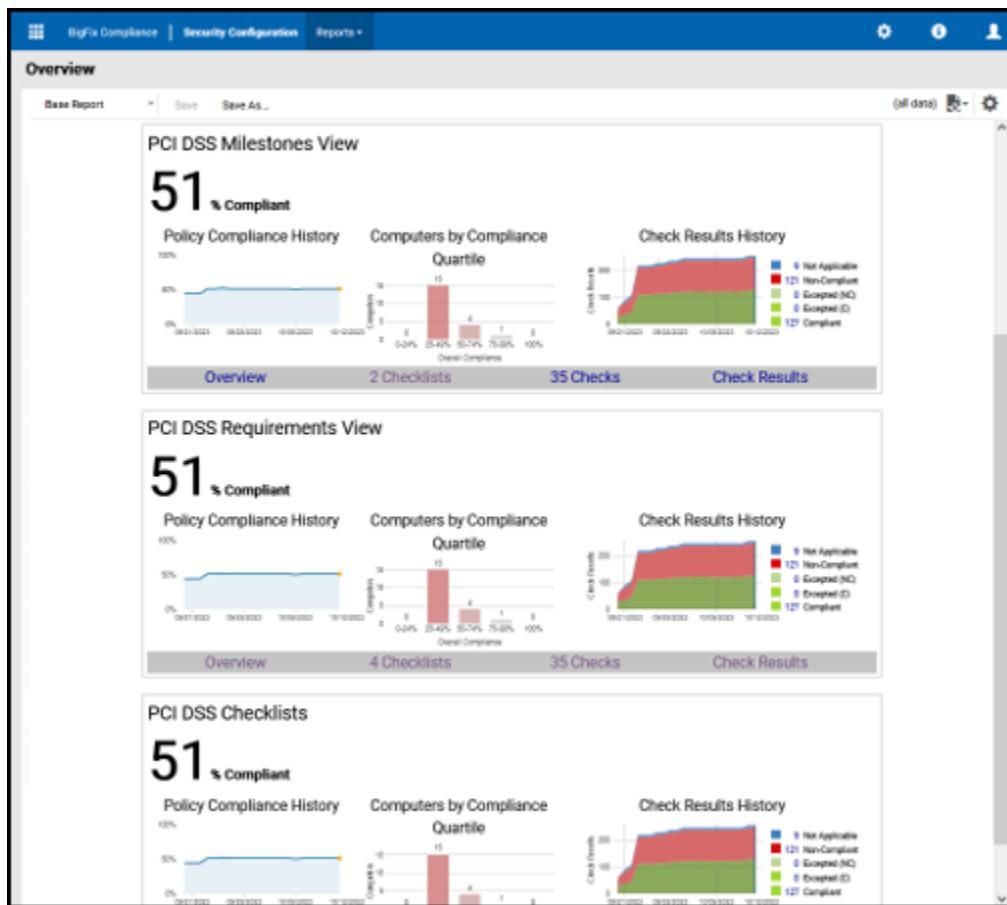
The Checks report shows the list of checks in the given scope together with the attributes of each check and the overall, historical aggregate compliance results (the aggregate of all visible computer's pass and fail score) of each check. To see the direct reference to a standard, you can configure the report view to display the Source ID.

Figure 20. List of checks



Alternatively, you can access the overall Checks List report from the Overview report in the home page. You can then filter the checks according to your preference.

Figure 21. Overview report with the highlighted Checks link



Viewing the Checks Overview report

The Checks Overview report shows detailed information about a check, such as the source information, description, and remediation steps. It also contains overall, historical aggregate compliance of the check as evaluated by all computers visible to logged in users.

You can drill down to each check from the Checks List report to view more details.

The Checks Overview report shows a graphic representation of Compliance and Check Results history with an overall compliance percentage.

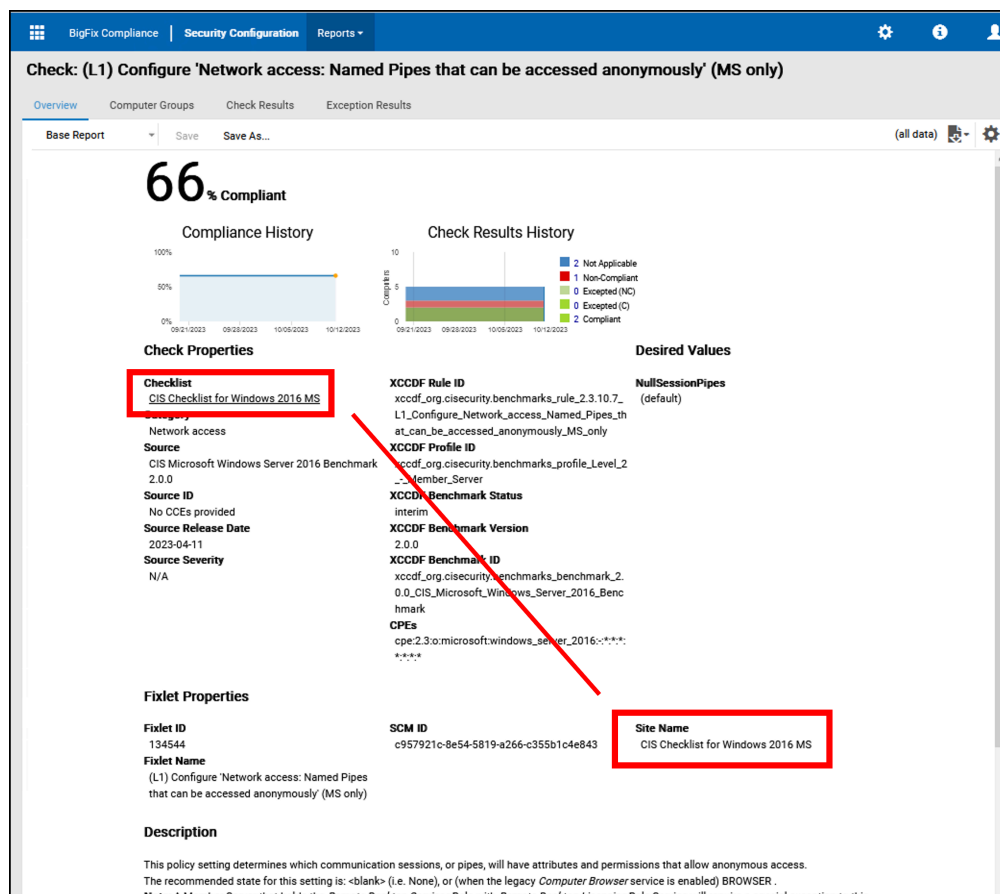


Note: The PCI DSS Checklists policy view does not cover the external sites for the PCI DSS checklists in BigFix Compliance Analytics version 2.0 and later.

The checks under the PCI DSS Checklists policy view are evaluated using the custom copy of the checklist as indicated in the sample Check Overview report in the following figure:



Figure 22. Overview details of a check from the PCI DSS Checklists policy view



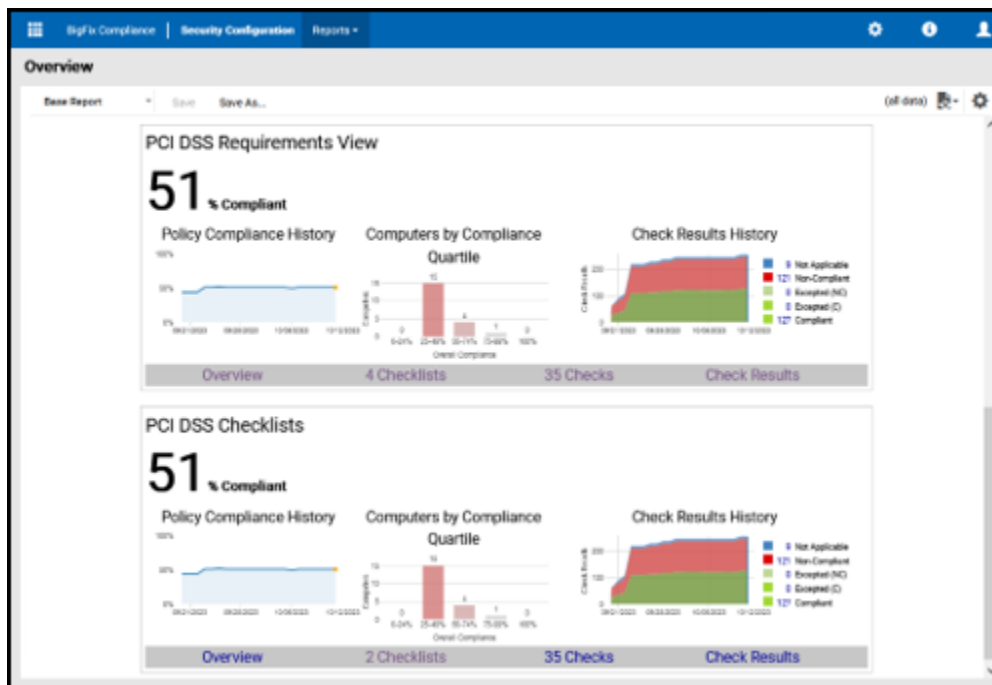
To ensure accurate reporting, complete the steps described in [Setting up the PCI DSS Policy Reports for BigFix Compliance Analytics V2.0 and later \(on page 16\)](#).

Viewing the Check Results List report

The Check Results List report shows the checklist, check name, computer name, the date when the results were last seen, and the level of compliance. It provides the attributes of each computer and check, and the historical compliance result for each check on each computer.

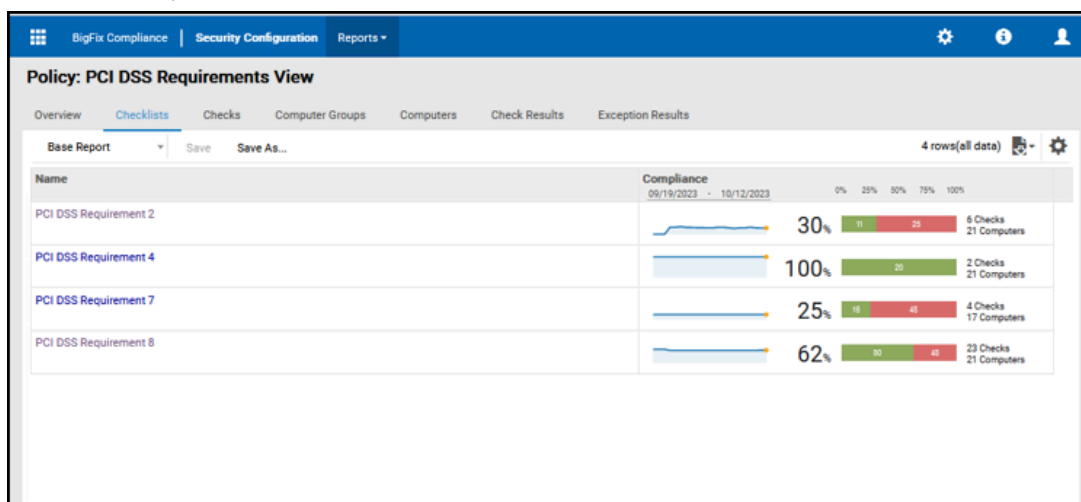
You can access the Check Results report for a particular policy view from the home page as shown in the following figure.

Figure 23. Check Results List Report link in the home page



Alternatively, you can access the Checks Results List report for a particular policy view from the Policy List report by using the drop-down list as shown in the following figure.

Figure 24. Policy List Report



You can then configure the view to show only the PCI DSS checks that you need by using the source ID as the filtering condition.

Figure 25. Checks Results List Report

Check Name	Computer Name	Last Seen	Compliance
Ensure 'Enforce password history' is set to '24 or more password(s)'	FIXMAKER	about 21 hours ago	Compliant
Ensure 'Enforce password history' is set to '24 or more password(s)'	SEA02DOM4210	about 21 hours ago	Compliant
Ensure 'Enforce password history' is set to '24 or more password(s)'	BIGFIXUVM	a day ago	Non-Compliant
Ensure 'Enforce password history' is set to '24 or more password(s)'	BIGFIX01	a day ago	Non-Compliant
Ensure 'Maximum password age' is set to '365 or fewer days, but not 0'	FIXMAKER	about 21 hours ago	Compliant
Ensure 'Maximum password age' is set to '365 or fewer days, but not 0'	SEA02DOM4210	about 21 hours ago	Compliant
Ensure 'Maximum password age' is set to '365 or fewer days, but not 0'	BIGFIXUVM	a day ago	Compliant
Ensure 'Maximum password age' is set to '365 or fewer days, but not 0'	BIGFIX01	a day ago	Compliant
Ensure 'Minimum password age' is set to '1 or more day(s)'	FIXMAKER	about 21 hours ago	Compliant
Ensure 'Minimum password age' is set to '1 or more day(s)'	SEA02DOM4210	about 21 hours ago	Compliant
Ensure 'Minimum password age' is set to '1 or more day(s)'	BIGFIXUVM	a day ago	Non-Compliant
Ensure 'Minimum password age' is set to '1 or more day(s)'	BIGFIX01	a day ago	Non-Compliant
Ensure 'Minimum password length' is set to '14 or more character(s)'	FIXMAKER	about 21 hours ago	Non-Compliant
Ensure 'Minimum password length' is set to '14 or more character(s)'	SEA02DOM4210	about 21 hours ago	Compliant
Ensure 'Minimum password length' is set to '14 or more character(s)'	BIGFIXUVM	a day ago	Non-Compliant

Viewing custom reporting on BigFix Compliance Analytics V1.8 and earlier



Note: The PCI DSS Policy Reports are available only when you complete the steps described in Setting up custom reporting for BigFix Compliance Analytics V1.8 and earlier.

The concept of checklists in BigFix Compliance Analytics version 1.8 differs from previous versions. Previously, a checklist is equivalent to a BigFix site. However, with policy reporting being introduced in this version, a checklist can now be associated with a policy view.

A policy view is based on an approach to gain compliance for PCI DSS, such as PCI DSS requirement or PCI DSS milestone. For more information about policy views, see [PCI DSS policies \(on page 8\)](#).

For simplicity, these checklists that are associated to policies will be referenced as *Policy Checklists* in this document.

Policy Checklists contain a collection of checks that run across multiple PCI DSS sites. These checklists provide a new way of reporting, which can help you better assess and identify the level of compliance in your organization.

PCI DSS Requirements Reporting

BigFix Compliance PCI Add-on provides additional reports to show a cumulative compliance state of your endpoints based on the PCI DSS Requirements.

The PCI DSS Requirements reports are generated based on the *Requirements and Security Assessment Procedures* document. Each requirement has a corresponding checklist.



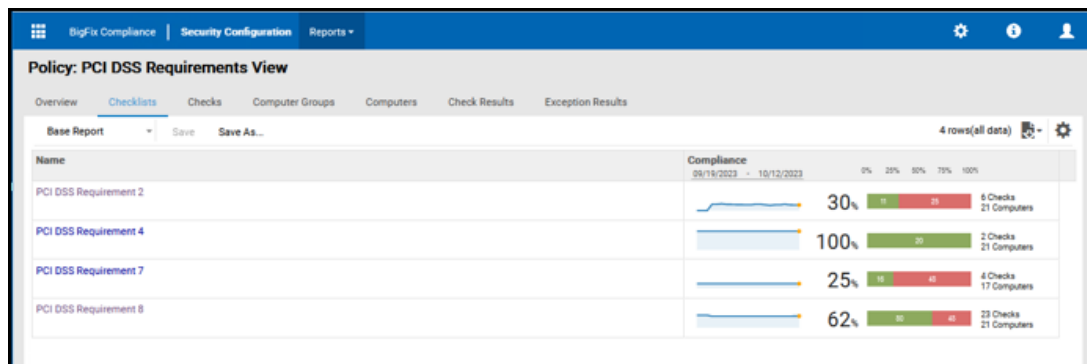
Note: PCI DSS requirements 3, 9, 11, and 12, which are process-oriented in nature, are not covered in BigFix Compliance.

These reports contain checklists that are mapped from the PCI DSS requirements and sub-requirements as seen in the following figure. The mapping was used in creating the checklists for the requirements perspective.

Figure 26. PCI DSS Requirement mapping

Each requirement has a corresponding checklist. To view the list of checklists, which represent the PCI DSS requirements, click **Reports > Checklists**. You can view more information about a checklist by clicking the checklist name from the Checklist view.

Figure 27. PCI DSS Requirement Checklist List



Checklist Overview

To view an overview of a specific requirement checklist, click **Reports > Checklists**. Then, select a requirement checklist: PCIDSS_Requirement_<number>.

The Overview presents a graphic representation of compliance history, computers by compliance quartile, and check results history with an overall compliance percentage shown in the top left corner of the console.

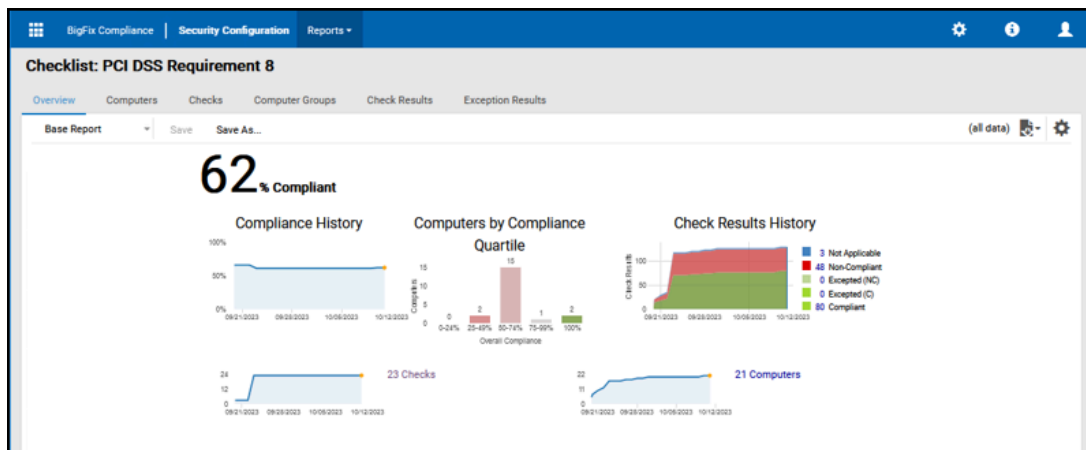
From this view, you can:

- View the list of checks by clicking on the number of checks available.
- View the list of computers by clicking on the number of computers available.
- View the list of checks and computers based on their compliance status.

Checks List

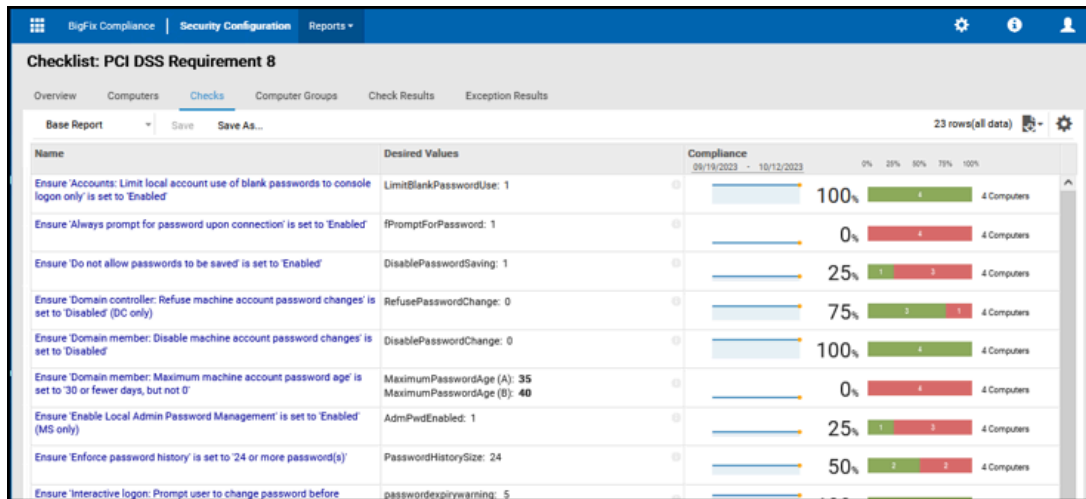
You can view the available checks in a checklist in detail by drilling down to the checks. You can do this by clicking the number of checks displayed on the Checklist Overview page.

Figure 28. PCI DSS Requirement Checklist Overview - Checks Link



This view shows a list of all checks, each in its cumulative state, for a requirement checklist. In the following figure, the cumulative state for each check for requirement 10 is displayed.

Figure 29. PCI DSS Requirement Check List

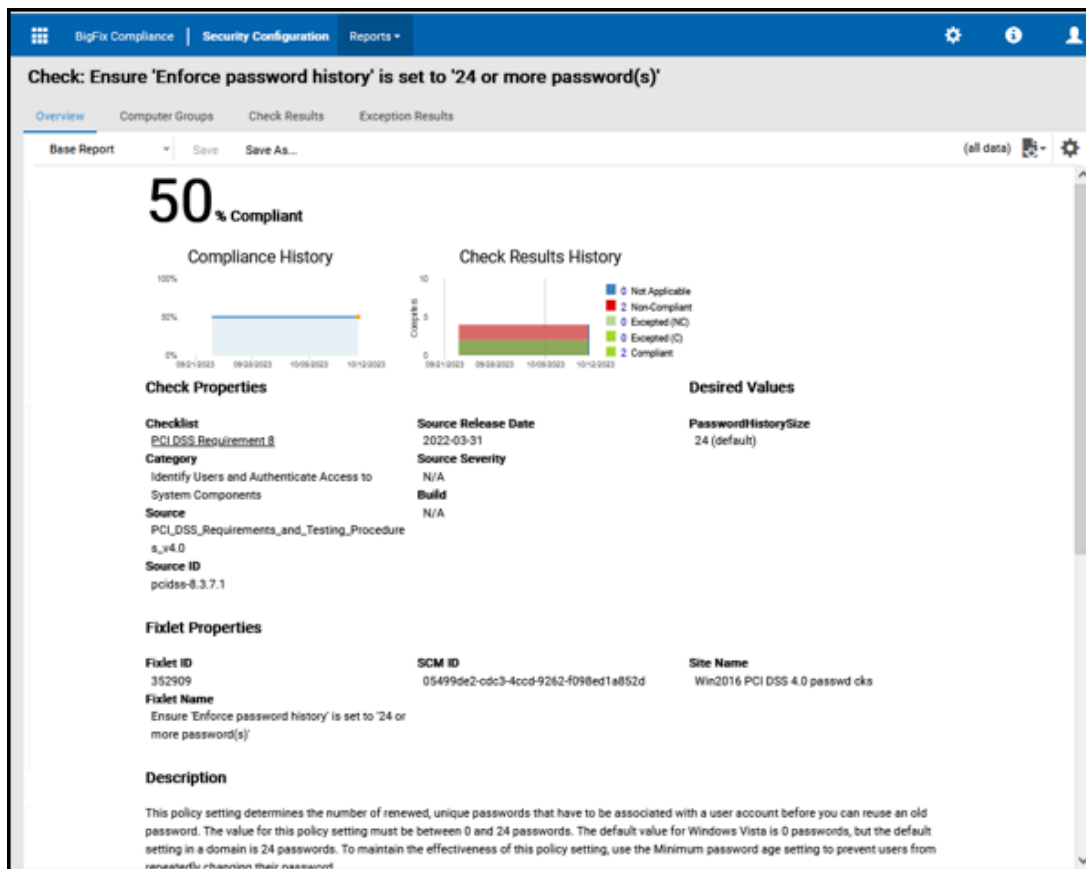


Check Overview

You can drill down to a specific check to view an overview of the cumulative check result. To do this, you can either click on a check name from the check list (as shown in the previous screenshot) or click **Reports > Checks** and select the cumulative check or click any check in the list.

This view shows a graphic representation of compliance history and check results history for a particular check, in this case, requirement 10.2.

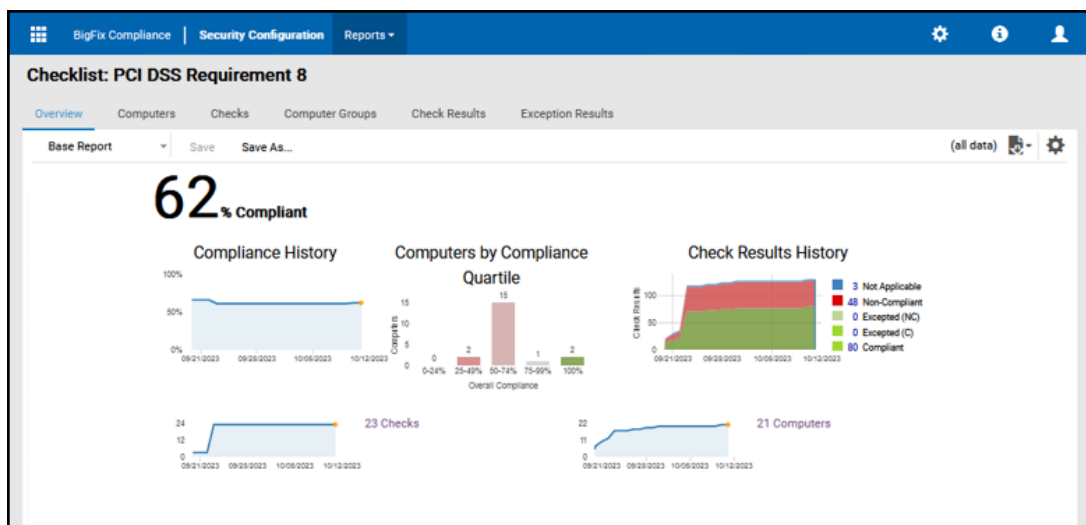
Figure 30. PCI DSS Requirement Check Overview



List of Computers

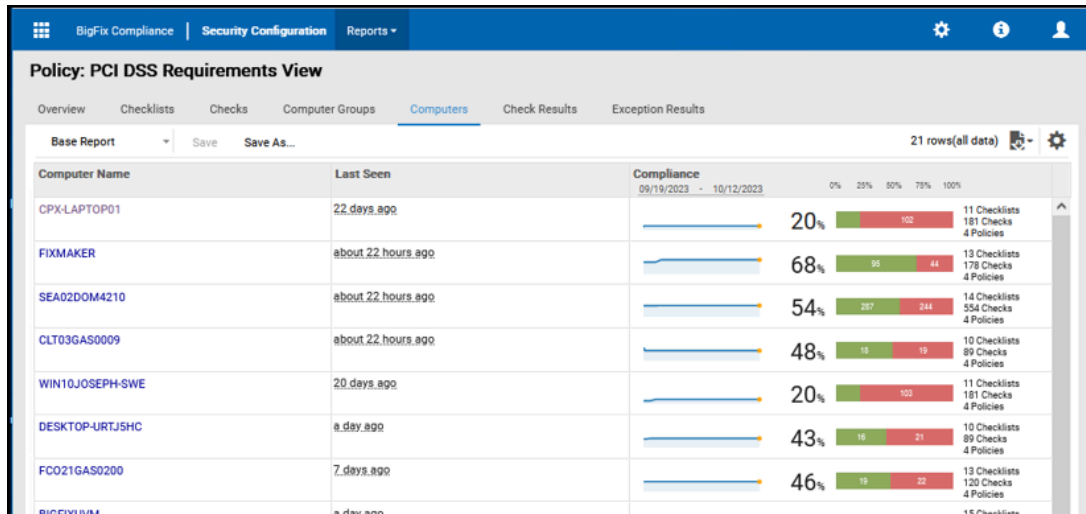
You can view the list of computers that are relevant to a specific requirement. To view this report, click the number of computers displayed on the Checklist Overview page.

Figure 31. PCI DSS Requirement Check Overview - Computers Link



This view shows a list of all computers with additional information, such as operating system. It also shows the corresponding compliance status for each computer.

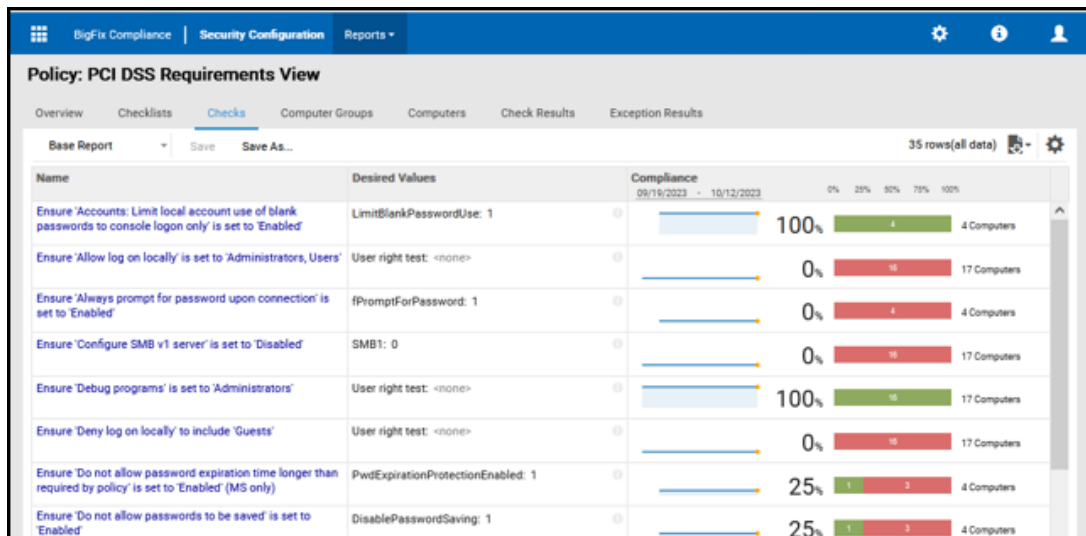
Figure 32. PCI DSS Requirement Check Overview - Computers Link



List of compliant checks and computers

You can configure the view according to the information that you want to display by using the Configure View option.

Figure 33. Configure View Option



In this example, use Filters to specify that you want to view only the checks and computers that compliant to PCI DSS requirement 10.

Figure 34. Configure View Dialog

Configure View

☐ DISA Fix ID
☐ DISA Fix Ref.
☐ DISA Group ID
☐ DISA Group Title
☐ DISA IA Controls
☐ DISA Release Information

☐ XCCDF Benchmark ID
☐ XCCDF Benchmark Status
☐ XCCDF Benchmark Version
☐ XCCDF Profile ID
☐ XCCDF Rule ID
☐ Description

Computer

☒ Computer Name
☐ Data Source Name
☒ Last Seen
☐ Operating System

☐ DNS Name
☐ IP Address
☐ Computer ID

Check Result

☐ Desired Values
☐ Overridden
☐ State
☒ Compliance
☐ Measured Values

Time Range

☒ All
☐ Last 3 days
☐ 09/19/2023 to 10/12/2023

09/21/2023 09/28/2023 10/05/2023 10/12/2023

Filters

Specify the report filter which matches **all** of the following conditions:

State in set Compliant

☒ Compliant
☐ Excepted (C)
☐ Excepted (NC)
☐ Non-Compliant
☐ Not Applicable

Minimum password length: 554020M4210

This view shows which computers and checks are in compliance with a particular requirement checklist, in this case, requirement 10.

Figure 35. Report configured to show compliance to a specific requirement

BigFix Compliance Security Configuration Reports ▾				
Policy: PCI DSS Requirements View				
Overview Checklists Checks Computer Groups Computers <u>Check Results</u> Exception Results				
* Base Report ▾ Save Save As... 127 rows(filtered) ⚙				
Checklist	Check Name	Computer Name	Last Seen	Compliance 09/19/2023 - 10/12/2023
PCI DSS Requirement 8	Ensure 'Enforce password history' is set to '24 or more password(s)'	FIXMAKER	about 22 hours ago	Compliant
PCI DSS Requirement 8	Ensure 'Enforce password history' is set to '24 or more password(s)'	SEA02DOM4210	about 22 hours ago	Compliant
PCI DSS Requirement 8	Ensure 'Maximum password age' is set to '365 or fewer days, but not 0'	FIXMAKER	about 22 hours ago	Compliant
PCI DSS Requirement 8	Ensure 'Maximum password age' is set to '365 or fewer days, but not 0'	SEA02DOM4210	about 22 hours ago	Compliant
PCI DSS Requirement 8	Ensure 'Maximum password age' is set to '365 or fewer days, but not 0'	BIGFIXUVM	a day ago	Compliant
PCI DSS Requirement 8	Ensure 'Maximum password age' is set to '365 or fewer days, but not 0'	BIGFIX01	a day ago	Compliant
PCI DSS Requirement 8	Ensure 'Minimum password age' is set to '1 or more day(s)'	FIXMAKER	about 22 hours ago	Compliant
PCI DSS Requirement 8	Ensure 'Minimum password age' is set to '1 or more day(s)'	SEA02DOM4210	about 22 hours ago	Compliant
PCI DSS Requirement 8	Ensure 'Minimum password length' is set to '14 or more character(s)'	SEA02DOM4210	about 22 hours ago	Compliant
PCI DSS Requirement 8	Ensure 'Password must meet complexity requirements' is set to 'Enabled'	FIXMAKER	about 22 hours ago	Compliant
PCI DSS Requirement 8	Ensure 'Password must meet complexity requirements' is set to 'Enabled'	SEA02DOM4210	about 22 hours ago	Compliant
PCI DSS Requirement 8	Ensure 'Store passwords using reversible encryption' is set to 'Enabled'	FIXMAKER	about 22 hours ago	Compliant

You can also configure the view to show computers and checks that are not in compliance with a particular requirement checklist.

PCI DSS Milestones Reporting

BigFix Compliance PCI Add-on provides additional reports to show a cumulative compliance state of your endpoints based on the PCI DSS Milestones.

The PCI DSS Milestones reports are generated based on the *Prioritized Approach for PCI DSS* document. The mapping was used in creating the checklists for the prioritized approach.

Figure 36. PCI DSS Milestone mapping

Checks List for PCI DSS Milestone 1 and mapping to PCI DSS prioritized approach

PCI DSS Requirements		Milestone					
		1	2	3	4	5	6
3.2	Do not store sensitive authentication data after authorization (even if encrypted). If sensitive authentication data is received, render all data irretrievable upon completion of the authorization process. It is permissible for issuers and companies that support issuing services to store sensitive authentication data if: <ul style="list-style-type: none"> There is a business justification and The data is stored securely. Sensitive authentication data includes the data as cited in the following Requirements 3.2.1 through 3.2.3:	1					
3.2.1	Do not store the full contents of any track (from the magnetic stripe located on the back of a card, equivalent data contained on a chip, or elsewhere) after authorization. This data is alternatively called full track, track, track 1, track 2, and magnetic-stripe data. <i>Note: in the normal course of business, the following data elements from the magnetic stripe may need to be retained:</i> <ul style="list-style-type: none"> The cardholder's name Primary account number (PAN) Expiration date Service code To minimize risk, store only these data elements as needed for business.	1					
3.2.2	Do not store the card verification code or value (three-digit or four-digit number printed on the front or back of a payment card used to verify card-not-present transactions) after authorization.	1					

Each milestone has a corresponding checklist and is intended to provide a roadmap to address risks in a prioritized order. Milestones enable merchants to demonstrate progress on compliance process.

To view the list of checklists, click **Reports > Checklists**. There are 7 milestone checklists in total, including the milestone summary checklist.

You can view more information about a checklist by clicking the checklist name from the Checklist view.

Figure 37. PCI DSS Milestone Checklist List

Name	Compliance
PCI DSS Milestone 2	<div> <div></div> <div>60%</div> <div>121</div> <div>76</div> <div>31 Checks</div> <div>24 Computers</div> </div>
PCI DSS Milestone 4	<div> <div></div> <div>25%</div> <div>15</div> <div>67</div> <div>4 Checks</div> <div>20 Computers</div> </div>

Milestones Summary Checklist Overview

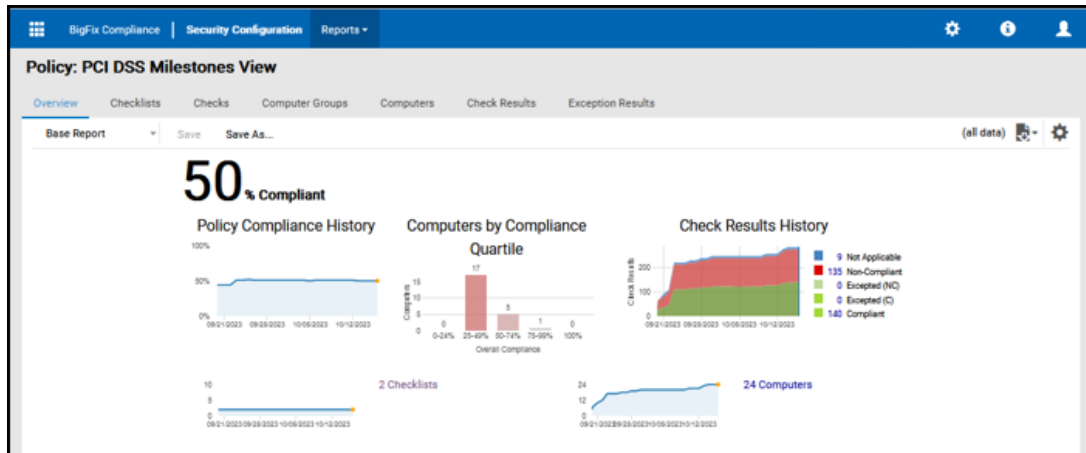
To view the Milestones Summary checklist, click **Reports > Checklists**. Then, select **PCIDSS_Milestones**.

This view shows a summary of all six milestones in a graphic representation of compliance history, computers by compliance quartile, and check results history with an overall compliance percentage shown in the top left corner of the console.

From this view, you can:

- View the list of checks by clicking on the number of checks available.
- View the list of computers by clicking on the number of computers available.
- View the list of checks and computers based on their compliance status.

Figure 38. PCI DSS Milestone Summary Checklist Overview



Checklist Overview

To view an overview of a specific milestone checklist, click **Reports > Checklists**. Then, select a milestone: PCIDSS_Milestone_<number>.

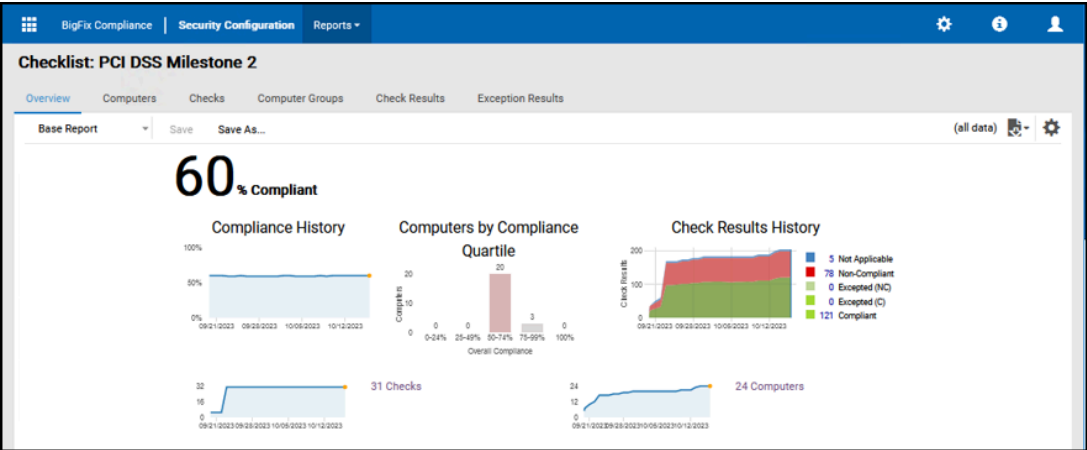
The Overview presents a graphic representation of compliance history, computers by compliance quartile, and check results history with an overall compliance percentage shown in the top left corner of the console.

From this view, you can:

- View the list of checks by clicking on the number of checks available.
- View the list of computers by clicking on the number of computers available.
- View the list of checks and computers based on their compliance status.

In this example, you can see the overview of the PCIDSS_Milestone_1 checklist.

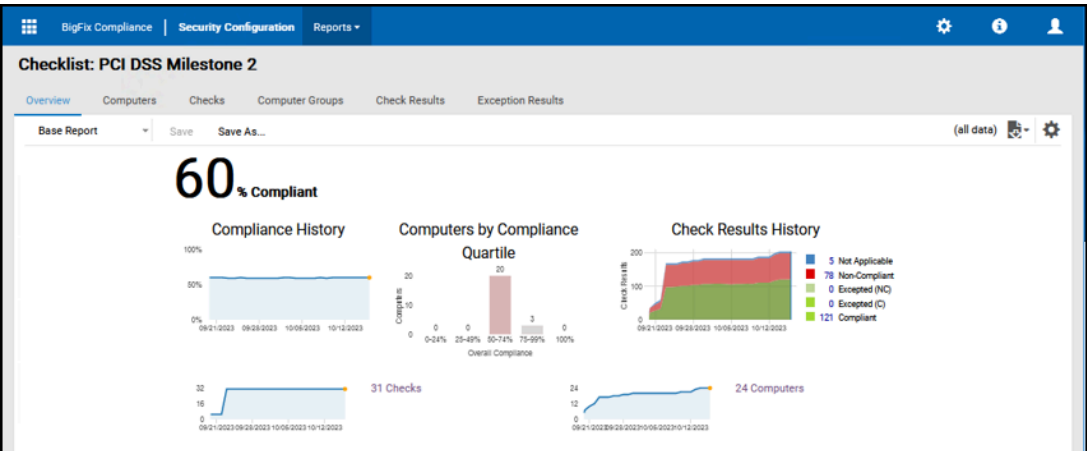
Figure 39. PCI DSS Milestone Checklist Overview



Checks List

You can view the available checks in a checklist in detail by drilling down to the checks. You can do this by clicking the number of checks displayed on the Checklist Overview page.

Figure 40. PCI DSS Milestone Checklist Overview - Checks Link



The Checks List report shows the list of checks in the given scope together with attributes of each check and the overall, historical aggregate compliance results (the aggregate of all visible computer's pass and fail score) of each check.

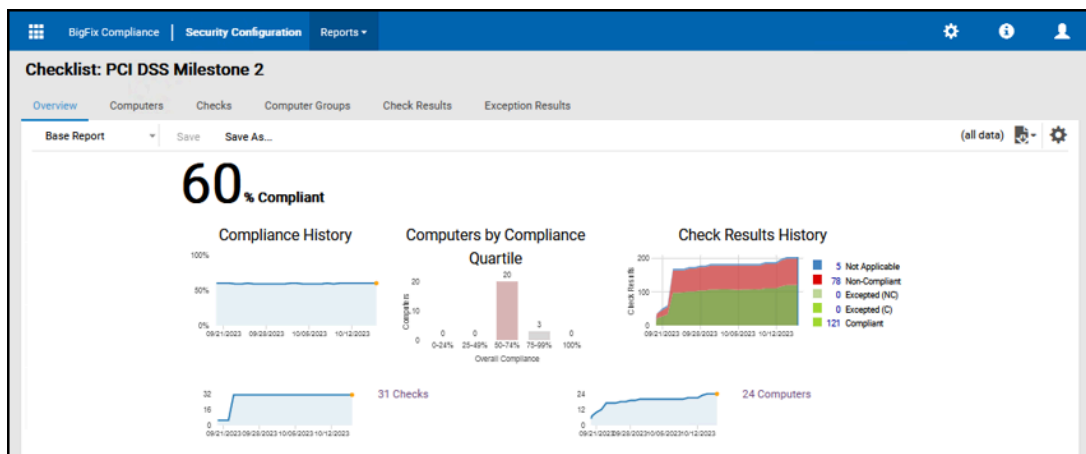
Figure 41. PCI DSS Milestone Check List

Checklist: PCI DSS Milestone 2			
Overview Computers Checks Computer Groups Check Results Exception Results			
* Base Report Save Save As... 31 rows(all data)			
Name	Checklist	Desired Values	Compliance
Ensure 'Accounts: Limit local account use of blank passwords to console logon only' is set to 'Enabled'	PCI DSS Milestone 2	LimitBlankPasswordUse: 1	100% 4 Computers
Ensure 'Always prompt for password upon connection' is set to 'Enabled'	PCI DSS Milestone 2	fPromptForPassword: 1	0% 4 Computers
Ensure 'Configure SMB v1 server' is set to 'Disabled'	PCI DSS Milestone 2	SMB1: 0	0% 20 Computers
Ensure 'Do not allow password expiration time longer than required by policy' is set to 'Enabled' (MS only)	PCI DSS Milestone 2	PwdExpirationProtectionEnabled: 1	25% 4 Computers
Ensure 'Do not allow passwords to be saved' is set to 'Enabled'	PCI DSS Milestone 2	DisablePasswordSaving: 1	25% 4 Computers
Ensure 'Do not display the password reveal button' is set to 'Enabled'	PCI DSS Milestone 2	DisablePasswordReveal: 1	100% 4 Computers
Ensure 'Domain controller: Refuse machine account password changes' is set to 'Disabled' (DC only)	PCI DSS Milestone 2	RefusePasswordChange: 0	75% 4 Computers

List of Computers

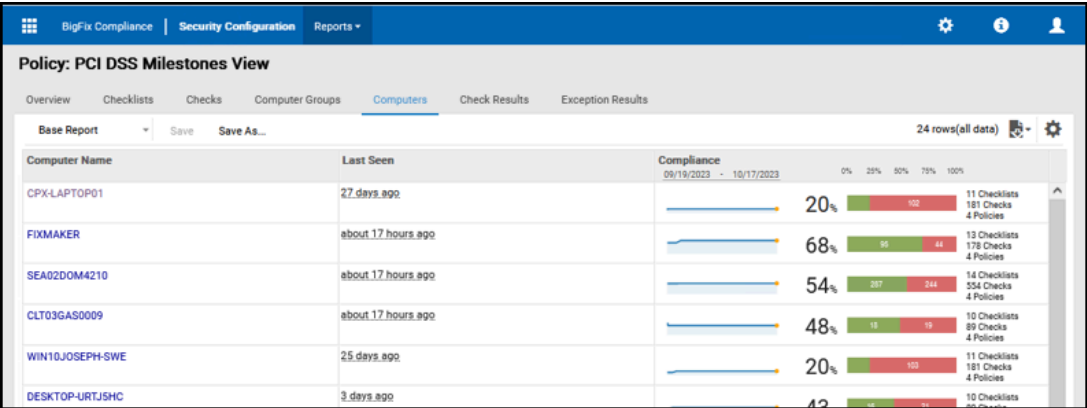
You can view the list of computers that are relevant to a specific milestone. To view this report, click the number of computers displayed on the Checklist Overview page.

Figure 42. PCI DSS Milestone Check Overview - Computers Link



This view lists all the computers that are applicable to a particular milestone checklist, in this case, milestone 1.

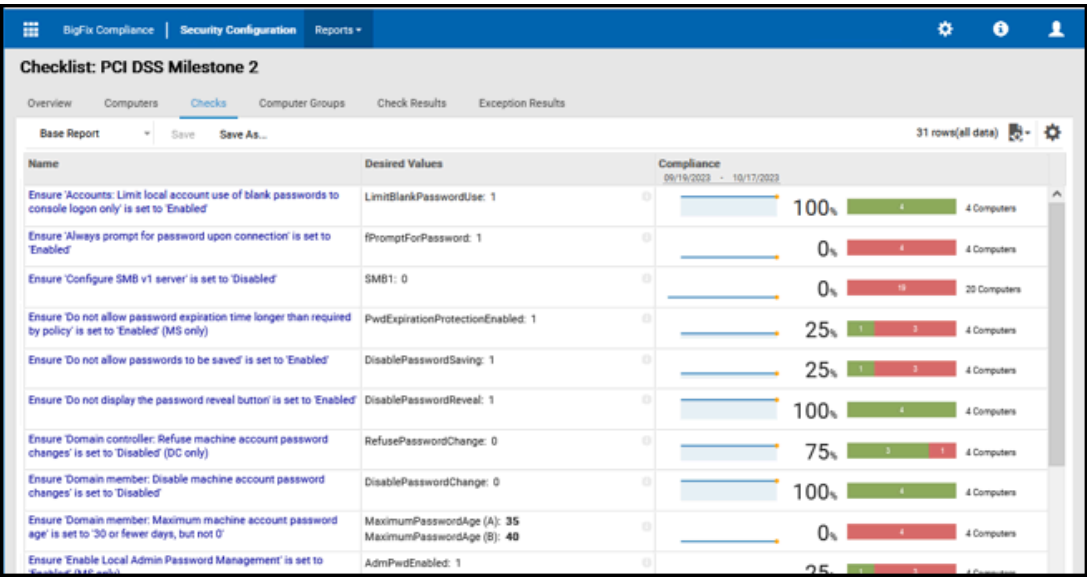
Figure 43. PCI DSS Milestone Check Overview - Computers Link



List of compliant checks and computers

You can configure the view according to what information you want to display by using the Configure View option.

Figure 44. Configure View Option



In this example, use Filters to specify that you want to view only the checks and computers that compliant to PCI DSS milestone 1.

Figure 45. Configure View Dialog

Configure View

<input type="checkbox"/> CPEs	<input type="checkbox"/> Source Release Date
<input type="checkbox"/> DISA CCI ID	<input type="checkbox"/> Source Severity
<input type="checkbox"/> DISA Check ID	<input type="checkbox"/> XCCDF Benchmark ID
<input type="checkbox"/> DISA Documentable	<input type="checkbox"/> XCCDF Benchmark Status
<input type="checkbox"/> DISA Fix ID	<input type="checkbox"/> XCCDF Benchmark Version
<input type="checkbox"/> DISA Fix Ref.	<input type="checkbox"/> XCCDF Profile ID
<input type="checkbox"/> DISA Group ID	<input type="checkbox"/> XCCDF Rule ID
<input type="checkbox"/> DISA Group Title	<input type="checkbox"/> Description
<input type="checkbox"/> DISA IA Controls	<input checked="" type="checkbox"/> Desired Values
<input type="checkbox"/> DISA Release Information	<input type="checkbox"/> Overridden
<input type="checkbox"/> DISA Responsibility	<input checked="" type="checkbox"/> Compliance

Scoped Compliance


<input type="checkbox"/> Computer Count	<input type="checkbox"/> Total Non-Compliant
<input type="checkbox"/> Total Compliant	<input type="checkbox"/> Total Not Applicable
<input type="checkbox"/> Total Excepted (C)	<input type="checkbox"/> Compliance Percentage
<input type="checkbox"/> Total Excepted (NC)	

Time Range

☒ All

☐ Last 3 days

☐ 09/19/2023 to 10/17/2023



09/21/2023 09/28/2023 10/05/2023 10/12/2023

Filters

Specify the report filter which matches all of the following conditions:

Total Compliant greater than or equal to 75

Submit Cancel

This view shows which computers and checks are in compliance with a particular milestone checklist, in this case, milestone 1.

Figure 46. Report configured to show compliance to a specific requirement

Check Name	Computer Name	Last Seen	Compliance
Cumulative state of requirement pcidss-1.1.2	NC9143127061	about an hour ago	Compliant
Cumulative state of requirement pcidss-1.1.2.a	NC9143127061	about an hour ago	Compliant
Cumulative state of requirement pcidss-1.1.2.b	NC9143127061	about an hour ago	Compliant
Cumulative state of requirement pcidss-1.1.3	NC9143127061	about an hour ago	Compliant
Cumulative state of requirement pcidss-12.2	NC9143127061	about an hour ago	Compliant
Cumulative state of requirement pcidss-12.2.a	NC9143127061	about an hour ago	Compliant
Cumulative state of requirement pcidss-12.2.b	NC9143127061	about an hour ago	Compliant
Cumulative state of requirement pcidss-3.1	NC9143127061	about an hour ago	Compliant
Cumulative state of requirement pcidss-3.1.a	NC9143127061	about an hour ago	Compliant

You can also configure the view to show computers and checks that are not in compliance with a particular milestone checklist.

Saving customized reports

Use the Saved Reports feature to retain a specific format for the report without creating the same settings for future use. The displayed columns and filters you used to customize the view are also saved.

1. Navigate to the report that you want to save.
2. Use the Configure View option to set the information that you want to show in the report.
3. Add a filter to specify a specific condition for the report view and click **Submit**.

Configure View

Options

☒ Autosize Columns

Columns

Checklist

☐ ID
 ☒ Name
 ☐ Policy

Scoped Compliance

☐ Total Compliant
 ☐ Total Excepted (C)
 ☐ Total Excepted (NC)

☐ Data Source Name
 ☒ Compliance
 ☐ Total Non-Compliant
 ☐ Total Not Applicable
 ☐ Compliance Percentage

Time Range

☒ All
 ☐ Last 3 days
 ☐ 09/11/2023 to 11/01/2023

Filters

Specify the report filter which matches **all** of the following conditions:

Name contains PCI DSS Requirement 1

+

Submit

Cancel

4. To save the report, click **Save As**.

5. Enter a name to identify the report to be saved and click **Create**.

BigFix Compliance

Security Configuration

Reports

Policy: PCI DSS Requirements View

Overview

Checklists

Checks

Computer Groups

Computers

Check Results

Exception Results

Base Report

Save

Save As...

2 rows (filtered)

Name	Compliance
PCI DSS Requirement 1	0% 100 537 Checks 7 Computers
PCI DSS Requirement 10	30% 100 294 Checks 7 Computers

Save Report As

Name*

PCI DSS_Requirements_1,10

☐ Private
 ☐ Set as default
 ☐ Set as global default

Create

The saved report becomes available in the Saved Reports list report and visible in the drop-down box on the left side of the sub-navigation area when viewing that report type.

Saved Reports

1 row

Name	User Name	Private	Default Report	Global Default Report	Next Scheduled Export
PCLDSS_Requirements_1_10	bigfix	No	No	No	<no data>

Edit Report

Name: PCLDSS_Requirements_1_10

☐ Private

☐ Set as default

☐ Set as global default

☐ Report Subscription

Format: PDF

Page Size: Letter

Orientation: ☒ Portrait ☐ Landscape

Email:

Start Time: 10/31/2023 05:35AM

Frequency: Daily

Every: 1 day(s)

Language: English

Save

Activate Windows

Creating exceptions

You can file for the endpoint to be excluded from the PCI DSS checks if some endpoints require compliance to older policies or standards.

Security and Compliance Analytics (SCA), which is now known as BigFix Compliance Analytics, provides a separate interface for Exception Management where you can set exceptions to exclude data from your compliance reports.

Figure 47. Exceptions page

Management: Exceptions

+ New Delete 0 rows

Reason	Checklist / Checks	Group / Computers	Expiration Date	Last edit by	Status
--------	--------------------	-------------------	-----------------	--------------	--------

Create Exception

Reason* Temporary exception during holiday freeze

Affected Checks ☒ All checks in checklist ☐ Selected checks

Checklist PCI DSS Checklist for Windows 10 (PCI v4.0)

Affected Computers ☒ All computers in group ☐ Selected computers

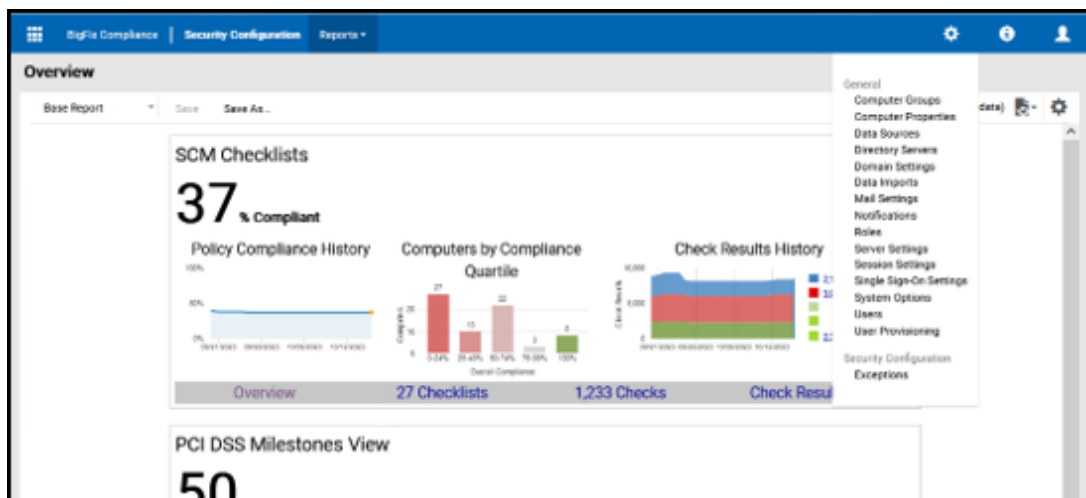
Target Group All Computers

Expires ☒ 01/04/2024 ☐ Never

Create

To access the Exceptions interface, click **Management > Exceptions**.

Figure 48. Management menu



You can create and edit exceptions for checks, computers, computer groups, and checklists with or without an expiration date.

Appendix A. Resources

You can find more information about Security Configuration Management and PCI DSS in the following resources.

Each document opens in a new window.

- [PCI DSS Requirements and Security Assessment Procedures](#)
- [PCI DSS Release Notes](#)
- [Security Configuration Management User's Guide](#)
- [Security and Compliance Analytics Setup Guide](#)
- [Security and Compliance developerWorks wiki](#)

Notices

This information was developed for products and services offered in the US.

HCL may not offer the products, services, or features discussed in this document in other countries. Consult your local HCL representative for information on the products and services currently available in your area. Any reference to an HCL product, program, or service is not intended to state or imply that only that HCL product, program, or service may be used. Any functionally equivalent product, program, or service that does not infringe any HCL intellectual property right may be used instead. However, it is the user's responsibility to evaluate and verify the operation of any non-HCL product, program, or service.

HCL may have patents or pending patent applications covering subject matter described in this document. The furnishing of this document does not grant you any license to these patents. You can send license inquiries, in writing, to:

HCL

330 Potrero Ave.

Sunnyvale, CA 94085

USA

Attention: Office of the General Counsel

For license inquiries regarding double-byte character set (DBCS) information, contact the HCL Intellectual Property Department in your country or send inquiries, in writing, to:

HCL

330 Potrero Ave.

Sunnyvale, CA 94085

USA

Attention: Office of the General Counsel

HCL TECHNOLOGIES LTD. PROVIDES THIS PUBLICATION "AS IS" WITHOUT WARRANTY OF ANY KIND, EITHER EXPRESS OR IMPLIED, INCLUDING, BUT NOT LIMITED TO, THE IMPLIED WARRANTIES OF NON-INFRINGEMENT, MERCHANTABILITY OR FITNESS FOR A PARTICULAR PURPOSE. Some jurisdictions do not allow disclaimer of express or implied warranties in certain transactions, therefore, this statement may not apply to you.

This information could include technical inaccuracies or typographical errors. Changes are periodically made to the information herein; these changes will be incorporated in new editions of the publication. HCL may make improvements and/or changes in the product(s) and/or the program(s) described in this publication at any time without notice.

Any references in this information to non-HCL websites are provided for convenience only and do not in any manner serve as an endorsement of those websites. The materials at those websites are not part of the materials for this HCL product and use of those websites is at your own risk.

HCL may use or distribute any of the information you provide in any way it believes appropriate without incurring any obligation to you.

Licensees of this program who wish to have information about it for the purpose of enabling: (i) the exchange of information between independently created programs and other programs (including this one) and (ii) the mutual use of the information which has been exchanged, should contact:

HCL

330 Potrero Ave.

Sunnyvale, CA 94085

USA

Attention: Office of the General Counsel

Such information may be available, subject to appropriate terms and conditions, including in some cases, payment of a fee.

The licensed program described in this document and all licensed material available for it are provided by HCL under terms of the HCL Customer Agreement, HCL International Program License Agreement or any equivalent agreement between us.

The performance data discussed herein is presented as derived under specific operating conditions. Actual results may vary.

Information concerning non-HCL products was obtained from the suppliers of those products, their published announcements or other publicly available sources. HCL has not tested those products and cannot confirm the accuracy of performance, compatibility or any other claims related to non-HCL products. Questions on the capabilities of non-HCL products should be addressed to the suppliers of those products.

Statements regarding HCL's future direction or intent are subject to change or withdrawal without notice, and represent goals and objectives only.

This information contains examples of data and reports used in daily business operations. To illustrate them as completely as possible, the examples include the names of individuals, companies, brands, and products. All of these names are fictitious and any similarity to actual people or business enterprises is entirely coincidental.

COPYRIGHT LICENSE:

This information contains sample application programs in source language, which illustrate programming techniques on various operating platforms. You may copy, modify, and distribute these sample programs in any form without payment to HCL, for the purposes of developing, using, marketing or distributing application programs conforming to the application programming interface for the operating platform for which the sample programs are written. These examples have not been thoroughly tested under all conditions. HCL, therefore, cannot guarantee or imply reliability, serviceability, or function of these programs. The sample programs are provided "AS IS," without warranty of any kind. HCL shall not be liable for any damages arising out of your use of the sample programs.

Each copy or any portion of these sample programs or any derivative work must include a copyright notice as follows:

© (your company name) (year).

Portions of this code are derived from HCL Ltd. Sample Programs.

Trademarks

HCL Technologies Ltd. and HCL Technologies Ltd. logo, and hcl.com are trademarks or registered trademarks of HCL Technologies Ltd., registered in many jurisdictions worldwide.

Adobe, the Adobe logo, PostScript, and the PostScript logo are either registered trademarks or trademarks of Adobe Systems Incorporated in the United States, and/or other countries.

Java and all Java-based trademarks and logos are trademarks or registered trademarks of Oracle and/or its affiliates.

Microsoft, Windows, Windows NT, and the Windows logo are trademarks of Microsoft Corporation in the United States, other countries, or both.

Linux is a registered trademark of Linus Torvalds in the United States, other countries, or both.

UNIX is a registered trademark of The Open Group in the United States and other countries.

Other product and service names might be trademarks of HCL or other companies.

Terms and conditions for product documentation

Permissions for the use of these publications are granted subject to the following terms and conditions.

Applicability

These terms and conditions are in addition to any terms of use for the HCL website.

Personal use

You may reproduce these publications for your personal, noncommercial use provided that all proprietary notices are preserved. You may not distribute, display or make derivative work of these publications, or any portion thereof, without the express consent of HCL.

Commercial use

You may reproduce, distribute and display these publications solely within your enterprise provided that all proprietary notices are preserved. You may not make derivative works of these publications, or reproduce, distribute or display these publications or any portion thereof outside your enterprise, without the express consent of HCL.

Rights

Except as expressly granted in this permission, no other permissions, licenses or rights are granted, either express or implied, to the publications or any information, data, software or other intellectual property contained therein.

HCL reserves the right to withdraw the permissions granted herein whenever, in its discretion, the use of the publications is detrimental to its interest or, as determined by HCL, the above instructions are not being properly followed.

You may not download, export or re-export this information except in full compliance with all applicable laws and regulations, including all United States export laws and regulations.

HCL MAKES NO GUARANTEE ABOUT THE CONTENT OF THESE PUBLICATIONS. THE PUBLICATIONS ARE PROVIDED "AS-IS" AND WITHOUT WARRANTY OF ANY KIND, EITHER EXPRESSED OR IMPLIED, INCLUDING BUT NOT LIMITED TO IMPLIED WARRANTIES OF MERCHANTABILITY, NON-INFRINGEMENT, AND FITNESS FOR A PARTICULAR PURPOSE.